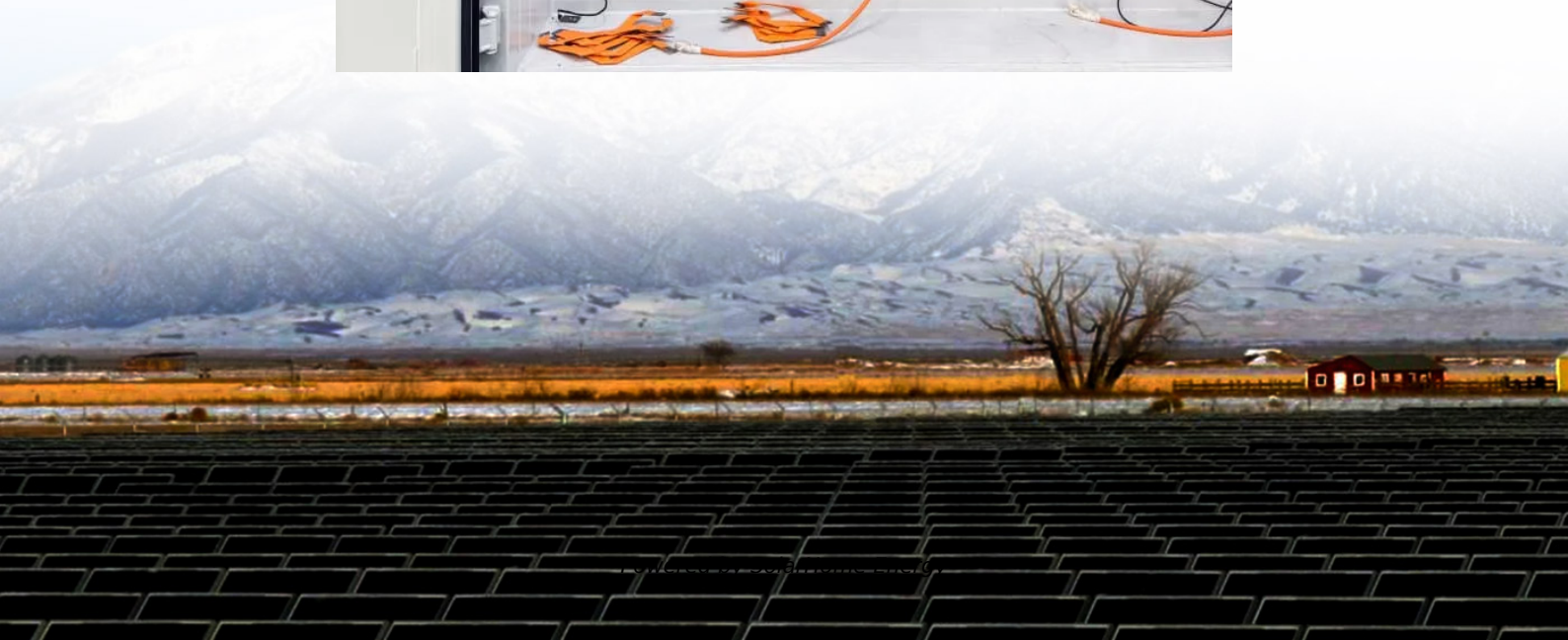


# How many volts of power does the base station consist of





## Overview

---

How many volts does a power station produce?

Power stations produce electricity at 25,000 volts (V). Step-up transformers change the voltage to the very high values needed to transmit electricity through the National Grid power lines. Electricity is sent through these at 400,000 V, 275,000 V or 132,000 V. The voltage of household electricity is about 230 V.

What are the components of a base station?

**Power Supply:** The power source provides the electrical energy to base station elements. It often features auxiliary power supply mechanisms that guarantee operation in case of lost or interrupted electricity, during blackouts. **Baseband Processor:** The baseband processor is responsible for the processing of the digital signals.

Do base stations need a power supply?

**Power supply:** The base station requires a power supply to operate. It may be connected to the electrical grid or have a backup power source like batteries or generators in case of power outages. **7. Backhaul connection:** The base station needs a backhaul connection to connect to the core network.

How much power does a cellular base station use?

This problem exists particularly among the mobile telephony towers in rural areas, that lack quality grid power supply. A cellular base station can use anywhere from 1 to 5 kW power per hour depending upon the number of transceivers attached to the base station, the age of cell towers, and energy needed for air conditioning.

How to choose a base station?

**Frequency:** The base station should operate on a frequency that is compatible with the devices it will be communicating with. Common frequencies include



900 MHz, 1.8GHz, 2.1GHz, 2.4 GHz, 2.6GHz and 5 GHz ,etc. 3. Power: The base station should have enough power to provide a strong and reliable signal.

How does a base station work?

It usually connects the device to other networks or devices through a dedicated high bandwidth wire of fiber optic connection. Base stations typically have a transceiver, capable of sending and receiving wireless signals; Otherwise if they only send the trailer it will be considered a transmitter or broadcast point only.



## How many volts of power does the base station consist of

---



### The basic things about substations you MUST know in the middle ...

Sub-transmission substations typically operate at 33 kV through 138 kV voltage levels. This kind of substations transform the high voltages used for efficient long distance ...

### Base Stations

**Power Supply:** The power source provides the electrical energy to base station elements. It often features auxiliary power supply mechanisms that guarantee operation in ...



### Power Base Station

Maximum base station power is limited to 24 dBm output power for Local Area base stations and to 20 dBm for Home base stations, counting the power over all antennas (up to four).

### Basestation

For instance, a typical 3G base station consumes about 500 W of input power to produce about 40 W of RF power making it the average annual



energy consumption of 3G base station ...



## Understanding USB Charger Voltages: A Comprehensive Guide

USB-A ports are typically limited to delivering 2.5 watts of power at 5 volts, while USB-C ports can deliver up to 100 watts of power at a variety of voltages, including 5 volts, 9 volts, 12 volts, and ...

## Fundamentals of Modern Electrical Substations

Power transformers are needed to fulfill the main duty of substations: step-up and step-down voltage transformation. The following main components of transformers may be listed:



## Base Stations

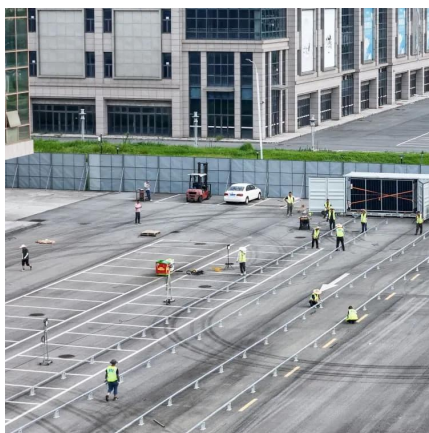
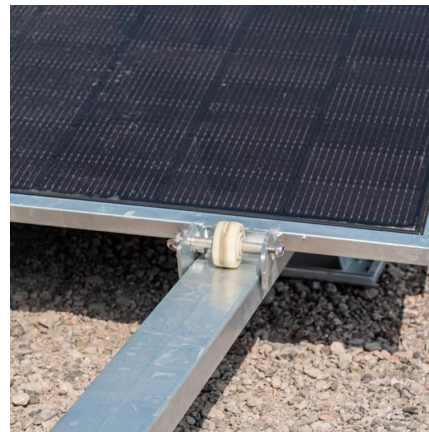
**Power Supply:** The power source provides the electrical energy to base station elements. It often features auxiliary power supply mechanisms ...





## Why does the communication base station use -48V power supply?

Because the smallest communications network and communications engineering are in the telephone network, the telecom bureau power supply voltage are 48V.



## Substation

As central generation stations became larger, smaller generating plants were converted to distribution stations, receiving their energy supply from a larger ...

## What Is A Base Station?

IoT Base Station: IoT (Internet of Things) base stations are designed to support the connectivity needs of IoT devices. They typically have low power consumption and provide ...



## [Generating electricity - WJEC The National Grid](#)

Power stations produce electricity at 25,000 volts (V). Step-up transformers change the voltage to the very high values needed to transmit electricity through the National Grid power lines.



## Overhead power line

An overhead power line is a structure used in electric power transmission and distribution to transmit electrical energy along large distances. It consists of ...



## How Many Volts Does A Lamp Use

When deciding how many volts a lamp needs, multiply the wattage by the amount of voltage required to power the bulb. For example, a 25-watt bulb requires 120 volts and a 40 ...

## [What's enough power for a base station?](#) [: r/gmrs](#)

What's enough power for a base station? I'm looking at putting a small base station into the kitchen of our ranch home for communicating with the HTs outside. Distance is ...



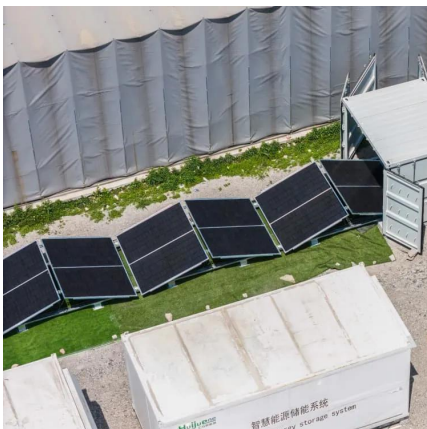


### [How Many Cells in a 12 Volt Battery](#)

Inside a 12 Volt Battery: Cells and Structure A 12-volt battery, a staple in automotive and renewable energy applications, operates on a simple ...

### [Ultimate Guide to Amps, Watts, and Volts](#)

However, it's worth noting the power station's amps, watts, voltage, etc., to ensure it can power appliances for long hours. Jackery Explorer Portable Power Stations are large ...



### **Why does the communication base station use -48V ...**

Because the smallest communications network and communications engineering are in the telephone network, the telecom ...

### **How many volts are in a power station? - MassInitiative**

How many volts are in a power station? 25,000 volts Power stations produce electricity at 25,000 volts (V). Step-up transformers change the voltage to the very high values needed to transmit ...





## Types of Base Stations

Base stations are one of the widely used components in the field of wireless communication and networks. It is an access point or base point of a ...



## Amateur Radio Station Construction

Building a working Amateur Radio station requires many skills, including safety and testing techniques, and a working knowledge of the components and their ...



## 4 types of Base stations

Macrocell base stations have power outputs of typically tens of watts. Since this type of cell offers the largest coverage area, it is placed in stations along highways and rural areas where large ...





## What is Base Station?

Nowadays, networking has become a crucial part of our daily lives. To implement network services for users, base station plays an essential role to constitute a complete network ...



## What Is A Base Station?

IoT Base Station: IoT (Internet of Things) base stations are designed to support the connectivity needs of IoT devices. They typically have ...

## [What Are Base Station Antennas? Complete Guide](#)

Base station antennas are also known as cell site antennas and cellular antennas, and they are typically mounted on a tower or rooftop and ...



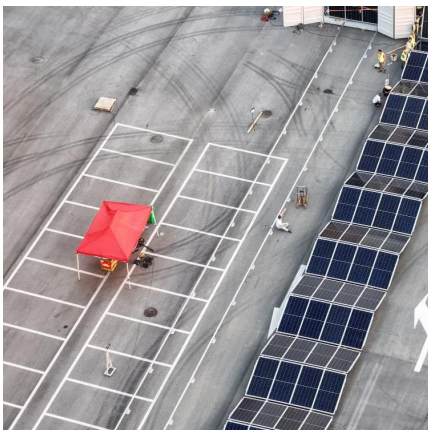
## what kind of power supplies do you guys use for base station

The difference in voltage isn't going to matter much. The amperage it can provide could be problematic if you're trying to transmit at higher power, but if you're transmitting at fairly low ...



## The basic things about substations you MUST know in the middle ...

What's enough power for a base station? I'm looking at putting a small base station into the kitchen of our ranch home for communicating with the HTs outside. Distance is usually within a ...



## Solar Basics: Voltage, Amperage & Wattage , The Solar Addict

Understanding Voltage, Amperage, and Wattage in Solar Panels Solar power has become an increasingly popular and accessible energy solution for both residential and ...

## [Generating electricity - WJEC The National Grid](#)

Power stations produce electricity at 25,000 volts (V). Step-up transformers change the voltage to the very high values needed to transmit electricity ...



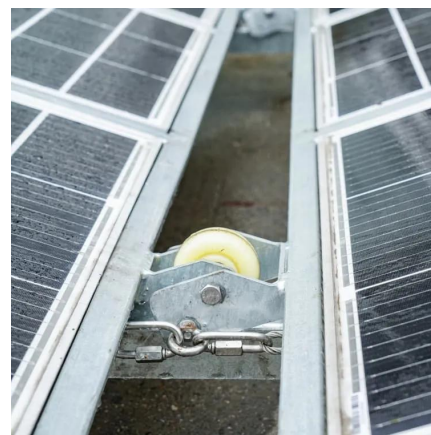


## How many volts are in a power station? - MassInitiative

Power stations produce electricity at 25,000 volts (V). Step-up transformers change the voltage to the very high values needed to transmit electricity through the National Grid power lines.

## 4 types of Base stations

Macrocell base stations have power outputs of typically tens of watts. Since this type of cell offers the largest coverage area, it is placed in stations along ...



## Contact Us

---

For catalog requests, pricing, or partnerships, please visit:  
<https://www.talbert.co.za>