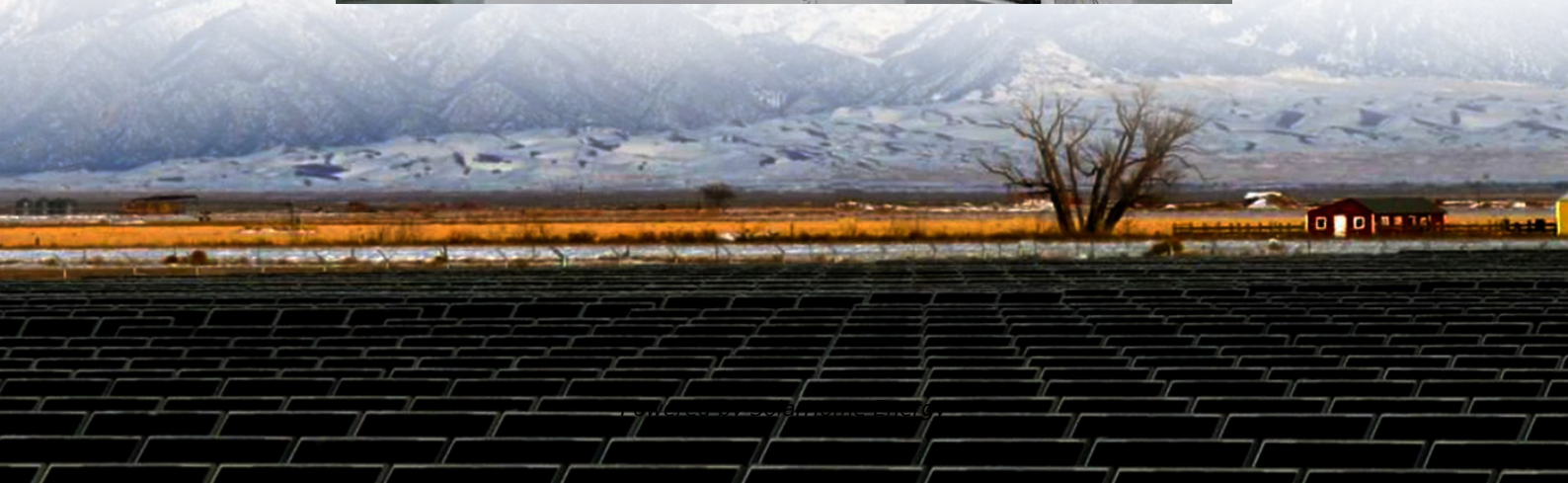


How many volts are there in batteries for communication base stations





Overview

Which battery is best for telecom base station backup power?

Among various battery technologies, Lithium Iron Phosphate (LiFePO₄) batteries stand out as the ideal choice for telecom base station backup power due to their high safety, long lifespan, and excellent thermal stability.

What makes a telecom battery pack compatible with a base station?

Compatibility and Installation Voltage Compatibility: 48V is the standard voltage for telecom base stations, so the battery pack's output voltage must align with base station equipment requirements. Modular Design: A modular structure simplifies installation, maintenance, and scalability.

Why do cellular base stations have backup batteries?

Abstract: Cellular base stations (BSs) are equipped with backup batteries to obtain the uninterruptible power supply (UPS) and maintain the power supply reliability. While maintaining the reliability, the backup batteries of 5G BSs have some spare capacity over time due to the traffic-sensitive characteristic of 5G BS electricity load.

Why is backup power important in a 5G base station?

With the rapid expansion of 5G networks and the continuous upgrade of global communication infrastructure, the reliability and stability of telecom base stations have become critical. As the core nodes of communication networks, the performance of a base station's backup power system directly impacts network continuity and service quality.

How many LiFePO₄ cells are in a 48V 100Ah battery pack?

1. Battery Pack Structure Design Cell Selection: A 48V 100Ah battery pack is typically composed of 15 or 16 LiFePO₄ cells (each with a nominal voltage of 3.2V) connected in series. The cell capacity, such as 100Ah, can be achieved through direct parallel connection or modular design.



How do you protect a telecom base station?

Backup power systems in telecom base stations often operate for extended periods, making thermal management critical. Key suggestions include:

Cooling System: Install fans or heat sinks inside the battery pack to ensure efficient heat dissipation.



How many volts are there in batteries for communication base station



What Are Base Station Antennas? Complete Guide

In modern telecommunications systems, the base station antenna stands out as an undeniable and crucial component to facilitate our daily ...

Technical specifications for Ring Alarm devices

Z-Wave range Ring uses Z-Wave technology to securely send signals between devices around your home and the Ring Alarm Base Station. The range for Z-Wave communication is up to 76 ...



EVE 280AH 3.2V Battery in a Communication Base Station ...

A set of EVE 280AH 3.2V batteries was installed in a dedicated battery room within the base station. The batteries were configured in a series - parallel combination to meet the required ...

Evaluating the Dispatchable Capacity of Base Station Backup ...

Evaluating the Dispatchable Capacity of Base Station Backup Batteries in Distribution Networks



Published in: IEEE Transactions on Smart Grid (Volume: 12, Issue: 5, September 2021)



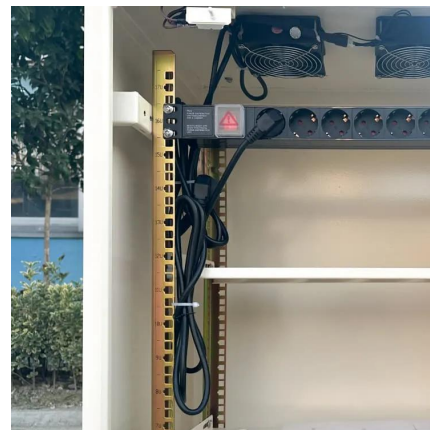
Lithium ion battery for telecom industry/towers/backup ...

The construction of mobile communication base stations is an important part of social security. The stability of communication base stations is related to ...



VRLA Telecom Batteries: A Complete Guide for Reliable ...

4 days ago· From mobile base stations to core switching centers, every component requires a reliable and stable power supply. Among the different options available, VRLA telecom ...



What Are Telecom Lithium Batteries and Their Benefits?

Check here. Telecom lithium batteries are advanced energy storage devices that utilize lithium-ion or lithium iron phosphate (LiFePO4) ...



[Ultimate Guide to Battery Voltage Chart](#)

Understanding the battery voltage lets you comprehend the ideal voltage to charge or discharge the battery. This Jackery guide reveals battery voltage ...



[What Powers Telecom Base Stations During Outages?](#)

Telecom batteries provide instantaneous power during grid outages via electrochemical energy storage. VRLA batteries use absorbed glass mat (AGM) technology for ...

What is a Base Station?

The electromagnetic waves emitted by base stations and mobile phones are like air, filling us all around. Everyone knows mobile phones, ...



Evaluating the Dispatchable Capacity of Base Station Backup Batteries

Evaluating the Dispatchable Capacity of Base Station Backup Batteries in Distribution Networks
Published in: IEEE Transactions on Smart Grid (Volume: 12, Issue: 5, September 2021)



Selection and maintenance of batteries for communication base stations

Focused on the engineering applications of batteries in the communication stations, this paper introduces the selections, installations and maintenances of batteries for communication ...

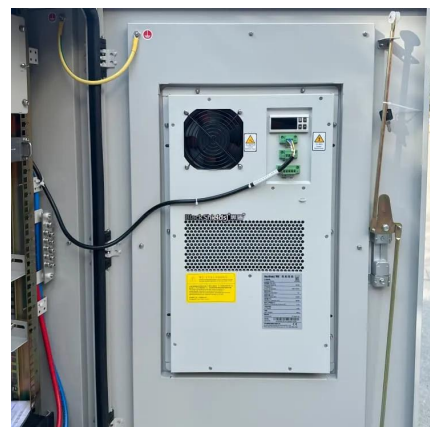


Communication Base Station Backup Power LiFePO4 ...

Why LiFePO4 battery as a backup power supply for the communications industry? 1.The new requirements in the field of ...

Communication Base Station Backup Battery

The ece energy wholesale telecom battery offers reliable, cost-effective backup power for communication networks. The telecom lithium battery is easily ...





Telecom Base Station Backup Power Solution: Design ...

Voltage Compatibility: 48V is the standard voltage for telecom base stations, so the battery pack's output voltage must align with base station ...

Understanding Backup Battery Requirements for Telecom Base Stations

Telecom base stations require reliable backup power to ensure uninterrupted communication services. Selecting the right backup battery is crucial for network stability and ...



48V lifepo4 lithium battery telecommunication base stations ...

The 48V LiFePO4 battery ensures that base stations stay operational even in the face of outages, safeguarding critical connections and maintaining the flow of data, voice, and messages ...

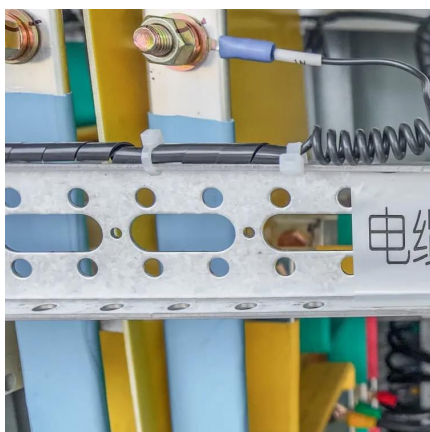
Breaking Down Base Stations - A Guide to Cellular Sites

Wondering what telecom sites really look like? Find everything you need to know about telecom sites, towers, and their components.



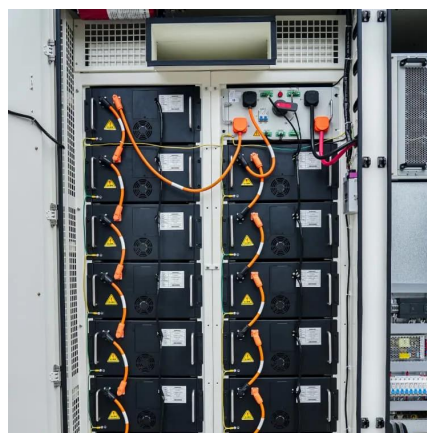
[What Are Amps, Volts and Watts--And Why Is My ...](#)

Everything you need to know about charging your devices and what all those little numbers on charging device labels really mean.



How many volts of battery are used in mobile base stations

In this paper, we closely examine the base station features and backup battery features from a 1.5-year dataset of a major cellular service provider, including 4,206 base stations distributed ...



[Understanding Backup Battery Requirements for ...](#)

Telecom base stations require reliable backup power to ensure uninterrupted communication services. Selecting the right backup battery is ...





Telecom Base Station Backup Power Solution: Design Guide for ...

Voltage Compatibility: 48V is the standard voltage for telecom base stations, so the battery pack's output voltage must align with base station equipment requirements.



EVE 280AH 3.2V Battery in a Communication Base Station ...

Communication base stations require a reliable backup power source to ensure uninterrupted service. This case study examines how the EVE 280AH 3.2V battery has been successfully ...

Number of base stations for Docomo, KDDI, Softbank, ...

For mobile communication, wireless base stations are installed all over the country. Smartphones communicate by connecting wirelessly to the ...



[Communication Base Station Backup Battery](#)

The ece energy wholesale telecom battery offers reliable, cost-effective backup power for communication networks. The telecom lithium battery is easily mounted in an environmentally ...



How many tons of energy storage batteries are used ...

To determine the tons of energy storage batteries utilized in base stations, one must consider several critical components: 1. The total number ...



Selection and maintenance of batteries for communication base ...

Focused on the engineering applications of batteries in the communication stations, this paper introduces the selections, installations and maintenances of batteries for communication ...

48V lifepo4 lithium battery telecommunication base ...

The 48V LiFePO₄ battery ensures that base stations stay operational even in the face of outages, safeguarding critical connections and maintaining the flow of ...





VRLA Telecom Batteries: A Complete Guide for Reliable Communication

4 days ago · From mobile base stations to core switching centers, every component requires a reliable and stable power supply. Among the different options available, VRLA telecom ...

[Choosing a Power Supply for Your Station](#)

Are you building your first station or returning to Ham radio from a long hiatus? Unlike gear from past decades, today's Ham radios operate on 13.8-volt power. Why 13.8V? ...



Environmental feasibility of secondary use of electric vehicle ...

The choice of allocation methods has significant influence on the results. Repurposing spent batteries in communication base stations (CBSs) is a promising option to ...

Contact Us

For catalog requests, pricing, or partnerships, please visit:
<https://www.talbert.co.za>