

How many strings of 72v lithium battery packs are there





Overview

What is a 72V lithium ion battery pack?

A 72V lithium ion battery pack is a powerful and efficient solution for various applications, offering high energy density, long lifespan, and environmental benefits. Whether you need a 72V 20Ah lithium battery, a 72V 100Ah lithium battery, or anything in between, choosing the right battery ensures optimal performance and longevity.

What are the different types of lithium battery packs?

Lithium battery series and parallel: There are both parallel and series combinations in the middle of the battery pack, which increases the voltage and increases the capacity. Such as 4000mAh, 6000mAh, 8000mAh, 5Ah, 10Ah, 20Ah, 30Ah, 50Ah, 100Ah and so on. Take 48V 20Ah lithium battery pack as an example Lithium Battery PACK.

Why is a lithium battery a series battery?

Due to the limited voltage and capacity of single batteries, series and parallel combinations are required in actual use to obtain higher voltage and capacity in order to meet the actual power supply needs of the equipment. Lithium battery in series: the voltage is added, the capacity remains the same, and the internal resistance increases.

What is a 72V 20Ah lithium battery?

Ideal for lightweight electric vehicles and scooters, the 72V 20Ah lithium battery pack offers a balance between power and range. A step up from the 72V 20Ah lithium battery, this option provides more extended runtime while maintaining a compact design.

What batteries are included in the battery library?

The library includes information on a number of batteries, including Samsung (ICR18650-30B, INR18650-25R), Sony (US18650GR, US18650VTC6), LG



(LGABHG21865, LGDBMJ11865), Panasonic (UR18650NSX, NCR18650B), and many more. Max. Cell Voltage (V): Pack Max. Voltage: 0 Max.

What are the advantages of lithium batteries in parallel?

Lithium batteries in parallel: the voltage remains the same, the capacity is added, the internal resistance is reduced, and the power supply time is extended. Lithium battery series and parallel: There are both parallel and series combinations in the middle of the battery pack, which increases the voltage and increases the capacity.



How many strings of 72v lithium battery packs are there



72V 200Ah EV Lithium Battery Pack

LifePO4 Battery 72V 200ah JMH 72V 200Ah, this battery is designed for electric vehicles, composed of lithium iron phosphate cells. The high energy density ...

[Guide to 72V Lithium Ion Battery Packs](#)

72V Lithium-ion battery pack guide. Learn about specs, applications in EVs, solar, and choosing the right 72V Li-ion battery.



Review China 72V 100Ah LiFePO4 battery pack technology

The 72V 100Ah LiFePO4 battery pack represents a significant advancement in energy storage technology, offering numerous benefits for various applications. This article ...

72V 20S Lithium Battery Pack

At AmericanElectric, we recycle lithium batteries to reduce waste, recover materials, and power a cleaner future. Give your Lithium Battery a

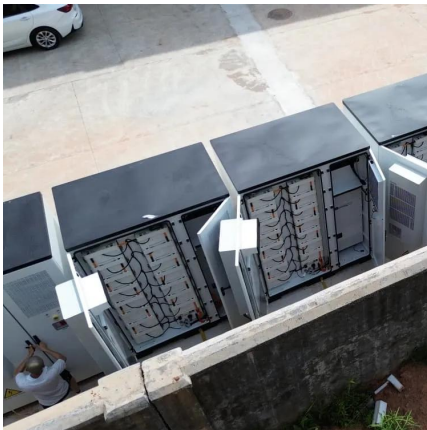


second ...



Trying to make 72V 500Ah. Do I need 2000 cells?? : r/batteries

So all you'd need in theory is 36 cells of 500Ah each in series. However you have to study the differences in detail. Lead acid are 1/5th the cost of lithium but are 2x the size and weight and ...



How many strings are there of 72v lithium battery pack

How to calculate how many strings are needed for a 72v battery pack. To calculate the capacity of your battery pack, you need to consider how much power you need and for how long.



How many 18650 batteries would make a 48v 20ah or ...

18650 is just a size like AA or D. Batteries in series= Add voltage Batteries in parallel = Add capacity (mah) Draw a matrix to help you add things up for the ...





BU-302: Series and Parallel Battery Configurations

BU-302: Configuraciones de Baterías en Serie y Paralelo (Español) Batteries achieve the desired operating voltage by connecting several cells in series; ...



72V 20AH LITHIUM BATTERY PACK

The cells in the 72v lithium battery pack are 18650 batteries, 18 mm in diameter, 65 mm in length, o-type cells. It can power scooters, boats, solar applications, and other electrical equipment ...

Is there a definitive guide how many cells in series are

Is there a definitive guide how many cells in series are needed for 12V, 24V, 36V, 48V, etc? Created a chart to see discrepancies. Jegu Garcia (link in comment) said 3S, 6S, 9S, 12S, but ...



Practical Implications of Series and Parallel ...

Overview As lithium batteries become increasingly popular, it is essential to understand the practical implications of different styles of installation. The ...



How many strings of 72v lithium iron phosphate battery pack do ...

To achieve a 72V battery pack, a configuration of 20 cells in series is usually employed ($20 \text{ cells} \times 3.7\text{V} = 74\text{V}$). According to a study by NREL (National Renewable Energy ...



Trying to make 72V 500Ah. Do I need 2000 cells?? : r/batteries

So all you'd need in theory is 36 cells of 500Ah each in series. However you have to study the differences in detail. Lead acid are 1/5th the cost of lithium but are 2x the size and ...

How many options are there on a 72v 200ah lithium battery pack...

How many options are there on a 72v 200ah lithium battery pack? I Messaged extreme team and I'm waiting to hear back from them, but I was just trying to find other options.



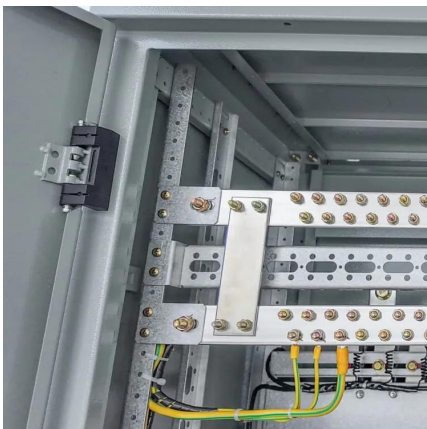


72V 20S Lithium Battery Pack

At AmericanElectric, we recycle lithium batteries to reduce waste, recover materials, and power a cleaner future. Give your Lithium Battery a second chance. Rebuild restores performance, ...

[How Many 12v Batteries Do I Need To Get To 72V?](#)

How Many 12v Batteries Do I Need To Get To 72V? Apr 17, 2025 In high-power applications such as electric motorcycles, e-bikes, industrial ...



[Battery Pack Calculator , Good Calculators](#)

Use it to know the voltage, capacity, energy, and maximum discharge current of your battery packs, whether series- or parallel-connected. Using the battery pack calculator: Just complete ...

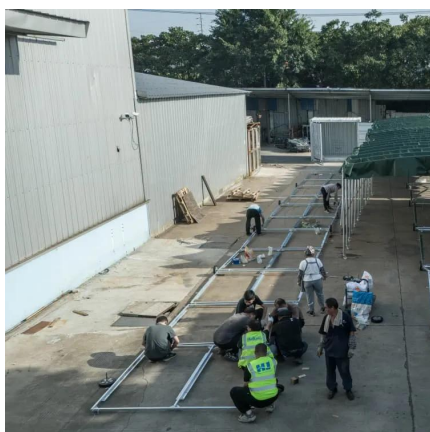
72V 20S Lithium Battery Pack

72V 20S Lithium-Ion Battery Pack USA Made.
Built-in BMS for 500W 1000W 2000W Motor.
SAMSUNG LG PANASONIC MOLICEL EVE Cells
Custom Size, Charge Discharge Port.



72v lithium battery pack should I use 21 or 20 strings

Whenever possible, using a single string of lithium cells is usually the preferred configuration for a lithium ion battery pack as it is the lowest cost and simplest.



72v lithium battery pack uses 22 strings

What is a 72V lithium battery pack? The cells in the 72v lithium battery pack are 18650 batteries, 18 mm in diameter, 65 mm in length, o-type cells. It can power scooters, boats, solar ...



How to Calculate the Number of Lithium Batteries in Series and in

So how to calculate how many series and how many batteries a lithium battery pack is composed of? Before performing the calculation, we need to know what specifications of batteries are ...





How to Calculate the Number of Lithium Batteries in ...

So how to calculate how many series and how many batteries a lithium battery pack is composed of? Before performing the calculation, we need to know ...



Battery pack calculator : Capacity, C-rating, ampere, charge and

Online free battery calculator for any kind of battery : lithium, Alkaline, LiPo, Li-ION, Nimh or Lead batteries Enter your own configuration's values in the white boxes, results are displayed in the ...

[72v lithium battery pack uses 22 strings](#)

The 72V 100AH Lithium-Ion Battery provides high safety through circular cells in Lithium Phosphate technology. 72V lithium-ion batteries are supposed to be a cost-effective ...



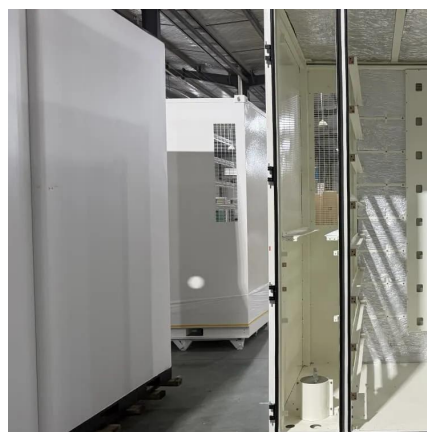
[How many cells in a 48V lithium battery?](#)

Considering these various factors helps engineers determine how many individual lithium-ion cells should be incorporated into a 48V lithium battery pack for optimal ...



How many strings are 48V20AH lithium battery ...

Therefore, the lithium battery must also be about 58v, so it must be 14 strings to 58.8v, 14 times 4.2, and the iron-lithium full charge is about 3.4v, ...



How many strings of 24V lithium iron phosphate batteries are good

How many cells are in a set of lithium iron phosphate batteries? The whole set of batteries is 14 strings multiplied by 10 cells = 140 cells. Summary: Series and parallel have their own ...

Contact Us

For catalog requests, pricing, or partnerships, please visit:
<https://www.talbert.co.za>