

How many strings are there in Israel s 48v lithium battery pack





Overview

Lithium battery pack 48V20AH generally single lithium battery is 3.5V, so 48V lithium battery pack needs $48/3.5=13.7$, just take 14 in series. If the manufacturer has provided a set of 12V lithium batteries, then 4 can be connected in series. How many lithium batteries can be connected in series?

Lithium battery pack 48V20AH generally single lithium battery is 3.5V, so 48V lithium battery pack needs $48/3.5=13.7$, just take 14 in series. If the manufacturer has provided a set of 12V lithium batteries, then 4 can be connected in series. As long as the output voltage is 48V, the current is 2A or 4A.

How many strings should a lithium battery have?

Therefore, the lithium battery must also be about 58v, so it must be 14 strings to 58.8v, 14 times 4.2, and the iron-lithium full charge is about 3.4v, it must be four strings of 12v, 48v must be 16 strings, and so on, 60v There must be 20 strings in parallel with the same model and the same capacity.

How many cells are in a set of lithium iron phosphate batteries?

The whole set of batteries is 14 strings multiplied by 10 cells = 140 cells.
Summary: Series and parallel have their own advantages for lithium iron phosphate batteries. Series and parallel lithium battery packs have different methods and achieve different goals.

What is lithium iron phosphate battery pack?

When lithium iron phosphate battery packs are assembled, different capacities and different voltages are generally realized in parallel or in series. In the lithium battery pack, multiple lithium batteries are connected in series to obtain the required operating voltage.

How many volts in a ternary lithium battery?

Two 10ah batteries in parallel are 20ah, 48v ternary lithium must be 14+14



10ah batteries, and finally 14 parallel connected in series to form a 48v20ah lithium battery. In fact, it is very simple. For example, 48 volts usually refers to voltage.

How long does a 12V lithium battery take to charge?

If the manufacturer has provided a set of 12V lithium batteries, then 4 can be connected in series. As long as the output voltage is 48V, the current is 2A or 4A. If it is a 2A full charge, it takes about ten hours, this is when there is still a certain amount of power in the battery.



How many strings are there in Israel s 48v lithium battery pack

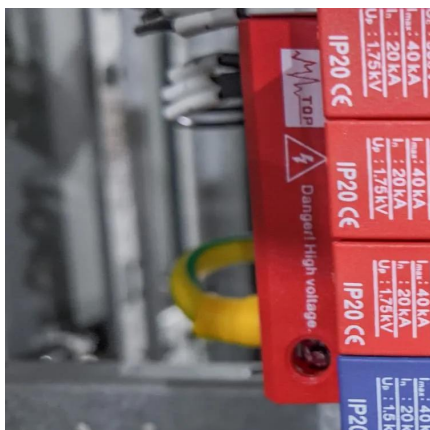


Calculate the number of series and parallel connections for lithium

Lithium battery pack 48V20AH generally has a single lithium battery of 3.5V. Therefore, a 48V lithium battery pack requires $48/3.5=13.7$, and 14 batteries can be connected ...

What does lithium battery string mean

For 48V battery packs, ternary lithium batteries generally use 13 strings or 14 strings, and lithium iron phosphate batteries generally use 15 strings or 16 strings. Today, let's talk about the ...



A Complete Guide to 48V 20Ah Batteries - Wistek

A 48V 20Ah battery typically refers to a lithium-ion battery pack with a nominal voltage of 48 volts and a capacity of 20 amp-hours (Ah). These batteries are commonly used ...

How to Install a 48V LiFePO4 Battery System

48V LiFePO4 Battery Pack (100Ah, 200Ah, or larger capacity) Battery Management System



(BMS) 48V Inverter Solar Charge Controller (for solar setups) Cables and Connectors ...



Battery Run Time Calculator

Calculate battery run time for 12V, 24V, and 48V batteries based on battery capacity & power consumption.

Cells Per Battery Calculator

This formula allows you to determine the exact number of cells you need based on your specific voltage and capacity needs, simplifying the ...



How To Build a 48V Battery Pack

Learn how to build a 48V battery pack with our comprehensive step-by-step guide which is perfect for beginners!



[Battery Pack Calculator , Good Calculators](#)

Use it to know the voltage, capacity, energy, and maximum discharge current of your battery packs, whether series- or parallel-connected. Using the battery pack calculator: Just complete ...

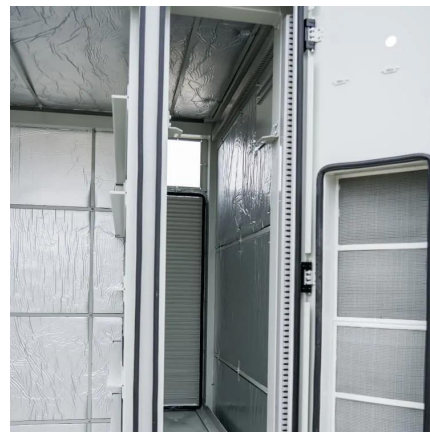


Battery pack calculator : Capacity, C-rating, ampere, charge and

How to size your storage battery pack : calculation of Capacity, C-rating (or C-rate), ampere, and runtime for battery bank or storage system (lithium, Alkaline, LiPo, Li-ION, Nimh or Lead ...

[How to Safely Parallel 48V Battery Strings?](#)

Parallel connecting 48V battery strings involves linking multiple batteries at the same voltage to increase capacity while maintaining system voltage. Critical prerequisites ...



[What does lithium battery string mean](#)

For 48V battery packs, ternary lithium batteries generally use 13 strings or 14 strings, and lithium iron phosphate batteries generally use 15 strings or 16 strings.



Cells Per Battery Calculator

This formula allows you to determine the exact number of cells you need based on your specific voltage and capacity needs, simplifying the design of the battery pack.



How many 18650 batteries would make a 48v 20ah or ...

The batteries are wired in a series-parallel configuration. To supply a 48v 20 ah pack you'd need 104 batteries One bank of batteries of 13 wired in series gets ...

How many cells in a 48V lithium battery?

But have you ever wondered how many cells are actually packed into a 48V lithium battery? Join us on this electrifying journey as we explore the inner workings of these ...





What does the number of lithium battery strings represent

How many strings should a lithium battery have? Therefore, the lithium battery must also be about 58v, so it must be 14 strings to 58.8v, 14 times 4.2, and the iron-lithium full charge is about ...

48V lithium battery pack the difference between ternary lithium 13

For 48V battery packs, ternary lithium batteries generally use 13 strings or 14 strings, and lithium iron phosphate batteries generally use 15 strings or 16 strings.



How to connect multiple 48V lithium battery packs?

Our 48V13AH Lithium Ion Battery and 36V 48V 52V Ebike Battery Pack are carefully manufactured and tested to ensure consistent performance. We use high - quality lithium cells ...

How many strings of 48v lithium iron phosphate battery pack

How many strings should a lithium battery have? Therefore, the lithium battery must also be about 58v, so it must be 14 strings to 58.8v, 14 times 4.2, and the iron-lithium full charge is about ...



[EZGO Elite / Samsung SDI for Techies](#)

I am quite sure the Samsung SDI lithium battery pack in the EZGO Elite uses Samsung INR18650-29E7 cells in a 14s20p array (280 cells per pack). There



How to Choose the Right Ah for 48V Li-ion Battery Pack?

A high-capacity pack might have several strings of 13 cells connected in parallel to boost ampere-hours without changing the overall 48V output. In short: More parallel groups = ...



How Many Cells Are in a 48V Battery? Configurations, Capacity, ...

A 48V battery typically has 16 cells. These cells are arranged in a layout of two series, with 8 cells in each series. This configuration provides a total voltage of 48 volts. This ...



Lithium Series, Parallel and Series and Parallel

Introduction Lithium battery banks using batteries with built-in Battery Management Systems (BMS) are created by connecting two or more batteries together to support a single ...



How many strings are 48V20AH lithium battery packs? How to ...

Lithium battery pack 48V20AH generally single lithium battery is 3.5V, so 48V lithium battery pack needs $48/3.5=13.7$, just take 14 in series. If the manufacturer has provided ...

How many LiFePO4 cells are in a 48V battery? LiFePO4 cells

Understanding the configuration of LiFePO4 batteries is crucial for anyone involved in energy storage solutions, electric vehicles, or renewable energy systems. One common ...



Trojan Battery , Lithium-Ion Battery FAQs

Explore essential information about lithium-ion batteries with Trojan Battery's FAQs. Get answers to common queries on performance, maintenance, and ...



Contact Us

For catalog requests, pricing, or partnerships, please visit:
<https://www.talbert.co.za>