

# **How many strings and parallels are there for a 60v 12A lithium battery pack**





## Overview

---

How many lithium batteries can be connected in series?

Lithium battery pack 48V20AH generally single lithium battery is 3.5V, so 48V lithium battery pack needs  $48/3.5=13.7$ , just take 14 in series. If the manufacturer has provided a set of 12V lithium batteries, then 4 can be connected in series. As long as the output voltage is 48V, the current is 2A or 4A.

What are the advantages of lithium batteries in parallel?

Lithium batteries in parallel: the voltage remains the same, the capacity is added, the internal resistance is reduced, and the power supply time is extended. Lithium battery series and parallel: There are both parallel and series combinations in the middle of the battery pack, which increases the voltage and increases the capacity.

What is the difference between lithium battery in series and parallel?

Lithium battery in series: the voltage is added, the capacity remains the same, and the internal resistance increases. Lithium batteries in parallel: the voltage remains the same, the capacity is added, the internal resistance is reduced, and the power supply time is extended.

What are the different types of lithium battery packs?

Lithium battery series and parallel: There are both parallel and series combinations in the middle of the battery pack, which increases the voltage and increases the capacity. Such as 4000mAh, 6000mAh, 8000mAh, 5Ah, 10Ah, 20Ah, 30Ah, 50Ah, 100Ah and so on. Take 48V 20Ah lithium battery pack as an example Lithium Battery PACK.

Why is a lithium battery a series battery?

Due to the limited voltage and capacity of single batteries, series and parallel combinations are required in actual use to obtain higher voltage and capacity



in order to meet the actual power supply needs of the equipment. Lithium battery in series: the voltage is added, the capacity remains the same, and the internal resistance increases.

How many lithium batteries should a solar array have?

It's wise to only series-connect up to four lithium batteries to make 48 volts, to prevent damage. In parallel, batteries share the same voltage. This practice ups amp hours without changing the voltage, which goes up to eight batteries for solar arrays. Series setups make batteries last longer than in parallel.



## How many strings and parallels are there for a 60v 12A lithium batt

---



### Cells Per Battery Calculator

The calculator uses the number of series and parallel connections to compute the total number of cells required for the pack, ensuring it meets both voltage and capacity ...

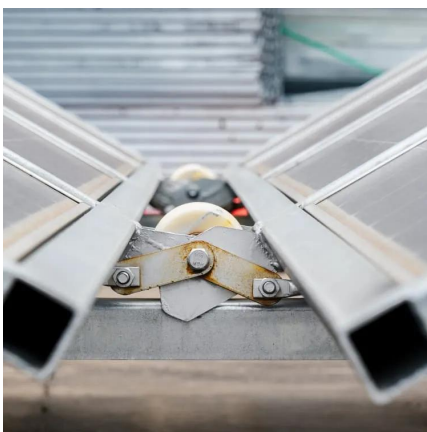
### How to Calculate the Number of Lithium Batteries in Series and in Parallel?

Lithium battery series and parallel: There are both parallel and series combinations in the middle of the battery pack, which increases the voltage and increases the capacity.



### EBMX Removable Aftermarket Lithium Battery Pack 60v

EBMX Removable Aftermarket Lithium Battery  
Introducing our powerful 60V battery, which provides a remarkable range boost of almost twice the capacity of the factory battery while ...



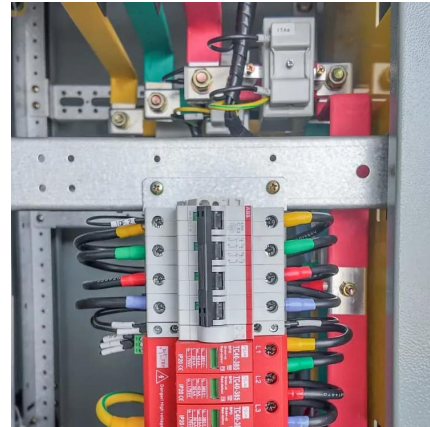
### Learn More About EGO Batteries and How to Choose ...

Here's how to pick the best EGO ARC Lithium(TM) battery for your tool or choose additional





batteries. Find out more here.



### Here is how to arrange the cells to make a battery pack

Four cells in parallel in a 7S/4P pack (28 cells). There is a full-length electrically-connecting metal strip (bus) on the top and the bottom of these four cells. The four cells in parallel can be ...



### How Can You Create Your Own 60V Lithium Ion Battery Pack?

Creating a 60v lithium ion battery pack can be a rewarding and cost-effective project for those looking to power their electric tools or vehicles.



### 60V 40Ah (16S 16P) LITHIUM-ION RECHARGEABLE BATTERY

This lithium-ion battery pack punches above its weight, offering a compelling blend of high voltage (60V) and impressive capacity (40Ah). This combination makes it a versatile powerhouse for ...





## Calculate the number of series and parallel connections for lithium

In a lithium battery pack, multiple lithium batteries are connected in series to obtain the required operating voltage. If higher capacity and greater current are required, then ...



## [How to Calculate the Number of Cells in a Battery](#)

The number of cells in a 12V battery pack can vary depending on the manufacturer and the intended use of the battery. A typical 12V lithium-ion ...

## [Battery Series and Parallel Connection Calculator](#)

Laptop batteries most often have a 4s2p setup. This means four cells are in series and two are in parallel. It's done to get a 14.4V nominal voltage and to double the capacity ...



## How to Calculate the Number of Lithium Batteries in ...

Lithium battery series and parallel: There are both parallel and series combinations in the middle of the battery pack, which increases the voltage ...



### EV Battery Charger (3-pin Plug) 60V 12A

A battery pack charger for lithium batteries is a device specifically designed to safely recharge lithium-ion battery packs. It provides the appropriate voltage and current to ensure efficient ...



### **How Many Cells in a Lithium Battery Pack? A Complete Guide to ...**

A 12V lithium battery pack typically contains multiple cells arranged in series and parallel configurations. Most commonly, a 12V lithium battery pack is made up of four lithium ...

### **How many strings are 48V20AH lithium battery packs? How to ...**

In the lithium battery pack, multiple lithium batteries are connected in series to obtain the required operating voltage. If what is needed is higher capacity and higher current, ...



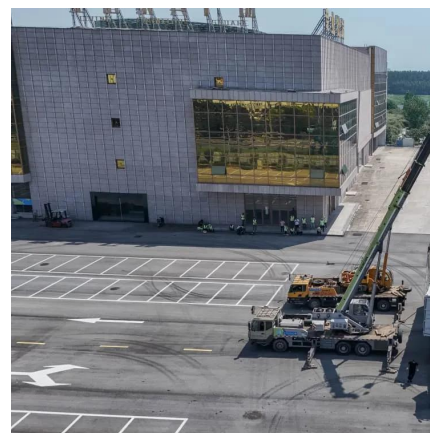


## Choosing the right BMS

I'm continuing with my plan to build an 18650 battery pack and I need some more input from smart guys. I am trying to choose a battery ...

## Understanding the 60V Lithium Battery: Voltage, Capacity, and ...

Lithium batteries have become increasingly popular in recent years, particularly in applications such as electric vehicles, renewable energy storage, and various portable ...



## Battery pack calculator : Capacity, C-rating, ampere, charge and

To get the voltage of batteries in series you have to sum the voltage of each cell in the serie. To get the current in output of several batteries in parallel you have to sum the current of each ...

## Cells Per Battery Calculator

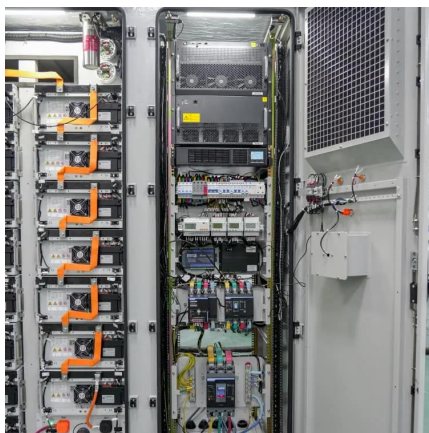
The calculator uses the number of series and parallel connections to compute the total number of cells required for the pack, ensuring it meets ...





### How many strings are 48V20AH lithium battery ...

In the lithium battery pack, multiple lithium batteries are connected in series to obtain the required operating voltage. If what is needed is higher ...



### **Li-ion battery 60V 30Ah**

Features: 1) Environmental friendly 2) High density of energy 3) Light weight 4) Low self-discharge 5) Low internal resistance 6) Long cycle life, chargeable up ...



### **How many series and parallels are there for a 60v 12A lithium ...**

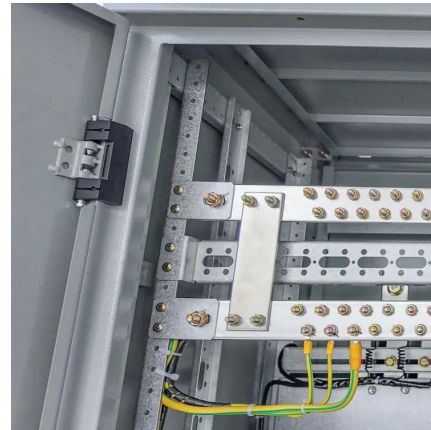
Lithium battery series and parallel: There are both parallel and series combinations in the middle of the lithium battery pack, which increases the voltage and capacity.





### **How many 18650 batteries would i need to get 60v (ah doesn't**

Your 60V battery will only have 2000 to 2500 mAh. If you want more you will have to connect a number of those series strings in parallel. That's where the \$400 comes from. If you go that ...



### **How many series and parallels are there for a 60v 12A lithium battery pack**

Lithium battery series and parallel: There are both parallel and series combinations in the middle of the lithium battery pack, which increases the voltage and capacity.

### **BMS with multiple battery modules**

Number of BMS's depends on your battery configuration. If you parallel a bunch of cells in to each serial string (like say 10p7s), you only need ...



### **How many 18650 batteries would i need to get 60v (ah doesn't**

Your 60V battery will only have 2000 to 2500 mAh. If you want more you will have to connect a number of those series strings in parallel. That's where the \$400 comes from. If ...



## 60V 45Ah Li-Ion Battery Pack For E-Bikes, Scooters, ...

Enhance your riding experience with Bonnen's bespoke EB60-45 lithium battery pack, meticulously crafted for high-performance electric racing motorcycles. ...



## Battery Pack with Li-ion 60V for 2000 W BLDC Motor

Step: put 20 lithium batteries in a string, a total of 8 strings. 8 series of lithium battery in parallel, with the partition and tape insulation. Adhesive tape fixed, welding ...

## [Battery Pack Calculator](#) , [Good Calculators](#)

Here's a useful battery pack calculator for calculating the parameters of battery packs, including lithium-ion batteries. Use it to know the voltage, capacity, energy, and maximum discharge ...





## **How Many Lithium Batteries Are Needed for a 60V Golf Cart?**

When it comes to powering a 60V golf cart with lithium batteries, it is essential to understand the correct battery configuration required to ensure optimal performance and ...

## **Contact Us**

---

For catalog requests, pricing, or partnerships, please visit:  
<https://www.talbert.co.za>