

How many square meters of solar photovoltaic panels





Overview

Typical solar panels range from 250W to 400W, translating to an area of about 1.6 to 2.2 square meters per panel, leading to a total space requirement of around 5 to 10 square meters for 1 kW. 3. How much space do solar panels need?

2. Typical solar panels range from 250W to 400W, translating to an area of about 1.6 to 2.2 square meters per panel, leading to a total space requirement of around 5 to 10 square meters for 1 kW. 3. Geographic location and installation angle can also affect the installation's efficiency and, consequently, its spatial demands.

How many square meters is a kilowatt solar panel system?

The area required for each kilowatt (kW) solar panel system is approximately 5 to 10 square meters, depending on the panel efficiency and wattage. 1. The effici.

What is solar panel efficiency?

Solar panel efficiency is crucial for a solar power system's success. High-efficiency panels convert more sunlight into electricity, boosting overall output. To measure this efficiency, use solar panel Watts per square meter (W/m). This metric shows how much power a solar panel produces per square meter of surface area under standard conditions.

What is a solar power per square meter calculator?

It also includes wiring, inverter, charge controller, and battery bank (if used). A solar power per square meter calculator takes details regarding these factors and then gives the accurate output generated by the solar panel per square meter. After this, it's time to learn about solar panel output calculators.

How many solar panels are needed for a 300W solar panel?



For calculations, if one assumes an average solar panel size of 1.6 square meters for a 300W panel, the calculations will reveal that around 3.3 panels would be necessary to generate 1 kW of energy. This translates into approximately 5.28 square meters needed for these installations.

What is solar panel watts per square meter (W/M)?

Solar panel watts per square meter (W/m) measures the power output of a solar panel based on its size. Compare solar panels to see which generates most electricity per square meter. A higher W/m value means a solar panel produces more power from a given area. This can help you determine how many solar panels you need for your energy needs.



How many square meters of solar photovoltaic panels



Solar Power Roof Area Calculator , Roof Space Needed for a Solar ...

Additionally, consider using the calculator for budgeting purposes by estimating the cost per square meter of solar panel installations. Solar Power Roof Area Case Study Example

Total Area Required for Solar Panel Installation ...

To start, it's essential to know typical panel sizes, wattages, and efficiencies used in residential, commercial, and utility-scale installations. ...



How many watts is a square meter of solar panel? , NenPower

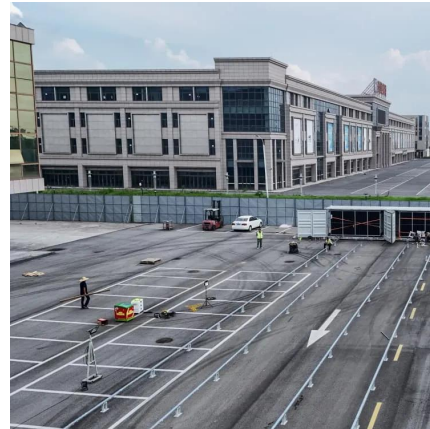
1. The power output of a solar panel per square meter typically ranges from 150 to 200 watts, which can be influenced by various factors such as efficiency, orientation, and ...

Solar Panel Wattage Explained: How Many Watts Do ...

Confused about solar panel wattage? Learn how many watts you need, how solar output works,



and how to calculate the right solar setup for ...

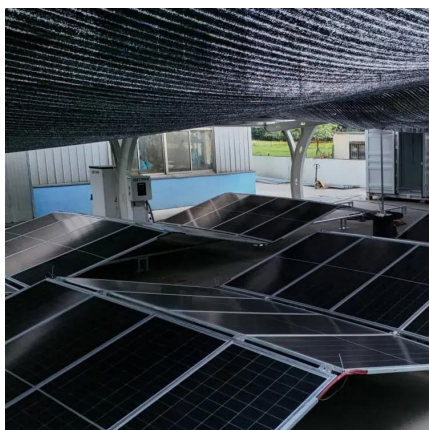


How many square meters is one kilowatt solar panel

One kilowatt solar panels typically occupy an area of approximately 6 to 8 square meters, depending on factors such as efficiency ...

How many square meters are 10kw photovoltaic solar ...

1. Typically, solar panels rated for 300 W to 400 W require about 1.6 to 2.0 square meters each,
2. Therefore, a 10 kW system may consist of ...



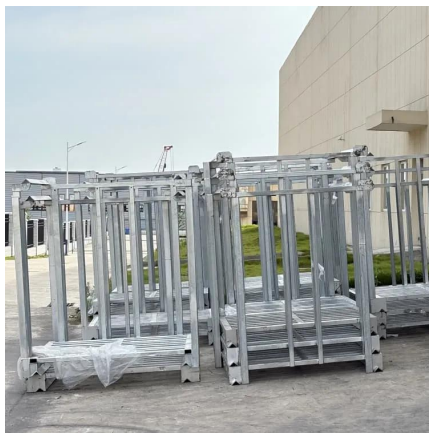
how to calculate square meters of photovoltaic cells

The first step in calculating the square meters of photovoltaic cells is to determine the size of the solar panels that will be used. Solar panels come in standard sizes, typically around 1.6 ...



[Solar Rooftop Calculator , Solar Panel Calculator](#)

Online Solar Roof Top Calculator Calculates the number of solar panels, kilowatt capacity, daily unit production, and require area in Square Meter as well as Square Feet based on the ...



Dimensions of Solar Panels

Photovoltaic module of 72 solar cells: 1,938 square meters (1,956 meters x 0.991 meters)
Note: Larger and more efficient photovoltaic modules are currently available on the market. In this ...

How many square meters of space is required per kw solar panel?

Typical solar panels range from 250W to 400W, translating to an area of about 1.6 to 2.2 square meters per panel, leading to a total space requirement of around 5 to 10 square ...



how to calculate square meters of photovoltaic cells

The first step in calculating the square meters of photovoltaic cells is to determine the size of the solar panels that will be used. Solar panels come in standard sizes, typically around 1.6 ...



How much Space do I need for Solar Panels? UK Guide 2025

Find out how much electricity you can generate per square foot or meter of roof space with solar panels in the UK. Click to know more.

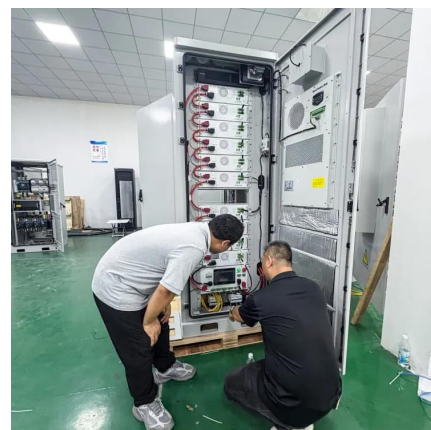


How many square meters is a solar photovoltaic , NenPower

Thus, while solar panels are adaptable, assessing roof characteristics is essential to achieving maximum energy output. WHAT ARE THE COMMON MISCONCEPTIONS ABOUT ...

[Solar Panel Watts Per Square Meter Explained](#)

Compare solar panels to see which generates most electricity per square meter. A higher W/m value means a solar panel produces more power from a given ...





How many square meters is a solar panel? , NenPower

1. A solar panel typically occupies between 1.6 to 2.3 square meters for standard residential installations, depending on the specific type ...

Solar Rooftop Potential

in 2016, there are over 8 billion square meters of rooftops on which solar panels could be installed in the United States, representing over 1 terawatt of ...



[How Many Square Meters is One Solar Panel?](#)

This article will delve into the average size of a solar panel in square meters. We will explore the standard dimensions, the typical energy output associated with these sizes, ...

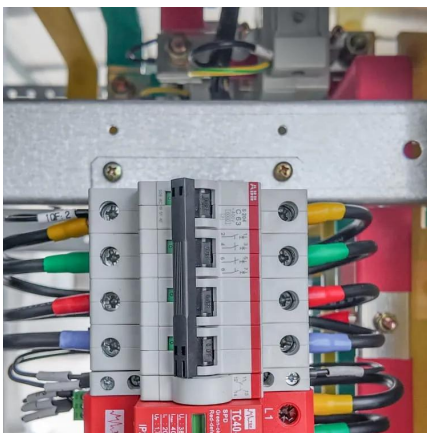
[Solar Power per Square Meter Calculator](#)

Solar panels have become a cornerstone of renewable energy, but many wonder: How much power can a single square meter of solar panels actually produce? ...



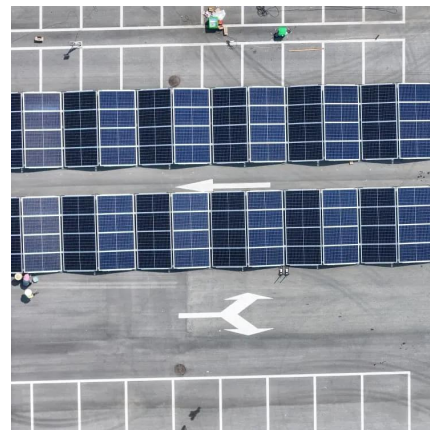
[Solar Power per Square Meter Calculator](#)

A solar power per square meter calculator takes details regarding these factors and then gives the accurate output generated by the solar panel per square meter.



How many square meters of solar panels does a family need?

Solar panel power: approximately 175 Wp/m².
Calculation: $4000/175 = 22.8$. Minimum required area: approximately 23 m². In this scenario, a roof area of 6×4 meters would already be ...



How Many Solar Panels Do I Need?

1 day ago· How many solar panels does a 2000 sq ft home need? It depends on usage, not square footage, but most 2,000 sq ft homes use about 1,000-1,200 kWh per month, which ...



Solar Panel Output per Square Meter: Efficiency Factors & Future ...

...

Solar panels have become a cornerstone of renewable energy, but many wonder: How much power can a single square meter of solar panels actually produce? Let's break down the ...



How Many Square Meters of Photovoltaic Panels Do You Really ...

Let's cut through the jargon and answer the million-dollar question: how many square meters of photovoltaic panels are typically combined for an efficient solar setup? Spoiler alert: it's not ...

How many square meters of solar panels does a ...

Solar panel power: approximately 175 Wp/m².
Calculation: $4000/175 = 22.8$. Minimum required area: approximately 23 m². In this scenario, a roof area of ...



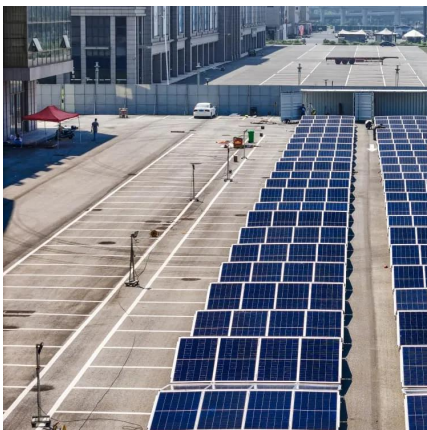
How much electricity can one square meter of solar ...

The method for calculating the power of a solar panel is as follows: length * width * solar cell conversion efficiency * 0.1 = power (in centimeters). ...



How Many Solar Panels are Needed for 100 MW?

As the world's focus on renewable energy continues to increase, solar energy is becoming more and more popular as a clean and sustainable energy source. Among many ...

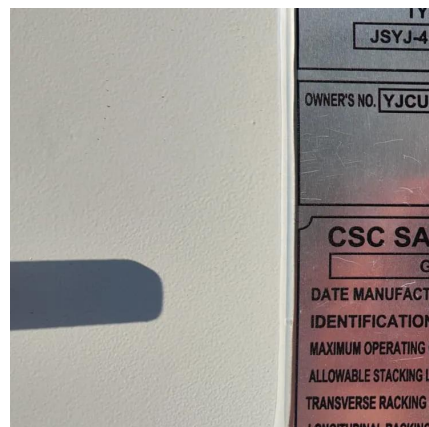


Standard Solar Panel Sizes And Wattages (100W ...

72-cell solar panel size. The dimensions of 72-cell solar panels are as follows: 77 inches long, and 39 inches wide. That's a 77×39 solar panel; basically, a ...

Solar Panel Watts Per Square Meter Explained

Compare solar panels to see which generates most electricity per square meter. A higher W/m value means a solar panel produces more power from a given area. This can help you ...





Total Area Required for Solar Panel Installation Calculator

To start, it's essential to know typical panel sizes, wattages, and efficiencies used in residential, commercial, and utility-scale installations. Below are comprehensive tables with ...

Contact Us

For catalog requests, pricing, or partnerships, please visit:
<https://www.talbert.co.za>