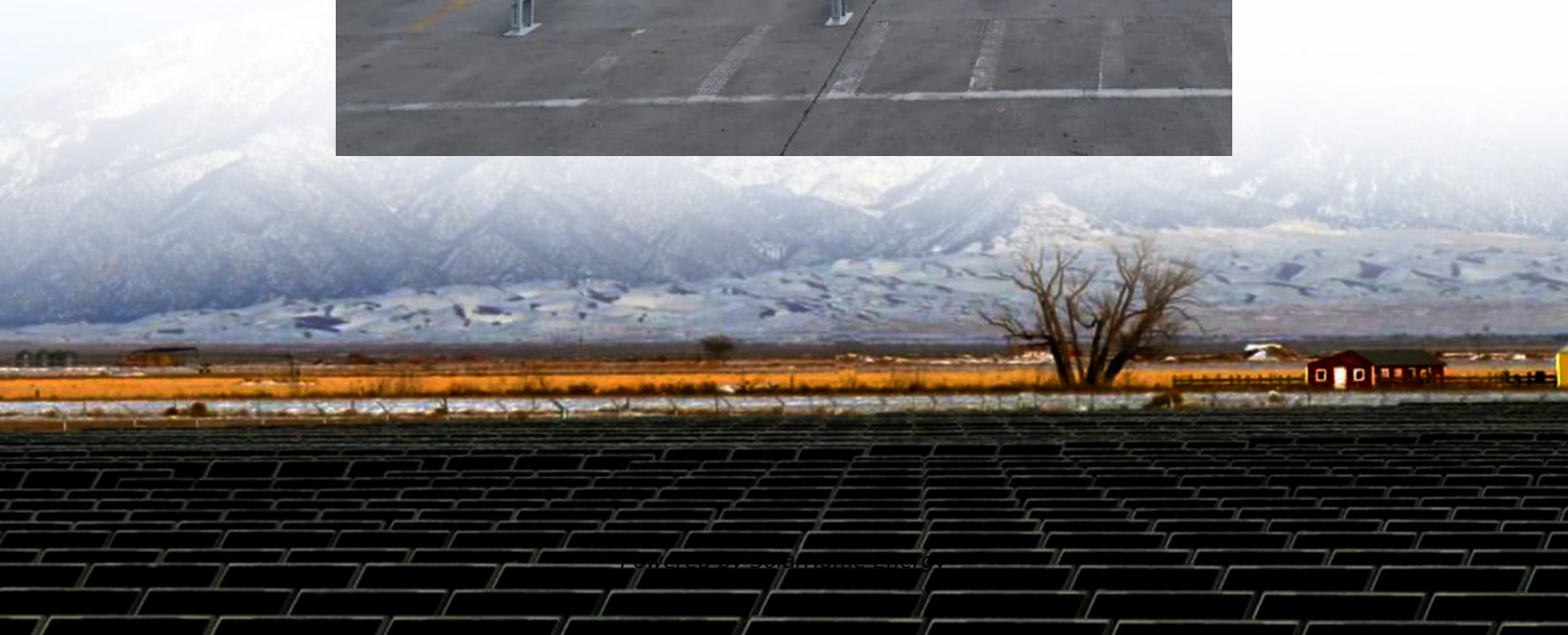


# **How many square meters does a 1kw solar photovoltaic panel cover**





## Overview

---

A typical residential rooftop installation of a 1kW solar system would require approximately 5-7 panels, with each panel occupying an average of 17.6 square feet (1.63 square meters) of space. This makes a total area of around 88 to 123 square feet (8.2 to 11.4 square meters) for a 1kW solar system. How much space do solar panels need?

2. Typical solar panels range from 250W to 400W, translating to an area of about 1.6 to 2.2 square meters per panel, leading to a total space requirement of around 5 to 10 square meters for 1 kW. 3. Geographic location and installation angle can also affect the installation's efficiency and, consequently, its spatial demands.

How many square meters is a kilowatt solar panel system?

The area required for each kilowatt (kW) solar panel system is approximately 5 to 10 square meters, depending on the panel efficiency and wattage. 1. The efficiency.

How many solar panels are needed for a 300W solar panel?

For calculations, if one assumes an average solar panel size of 1.6 square meters for a 300W panel, the calculations will reveal that around 3.3 panels would be necessary to generate 1 kW of energy. This translates into approximately 5.28 square meters needed for these installations.

How much space does a 1kW Solar System need?

Panels that have higher wattage and are more efficient are better. They need less space, which is great for small roofs. How much rooftop space is needed for a 1kW system?

You'll need about 10 square meters of space for a 1kW system. How can I calculate the payback period for my solar investment?

.



How to calculate total area required for solar panel installation?

Formulas for Calculating Total Area Required for Solar Panel Installation The fundamental equation for determining the total area required involves calculating the area occupied by the panels and the additional space for structural and operational needs. Core Formula: Where: Step 1: Calculate Number of Panels  $N$ .

Can a 1 KW solar panel be installed on a metal shed?

At the bottom line, according to the thumb rule of the solar industry, 1 kW of solar panel can be installed in a 100 square feet area having no shaded space on the roof. However, 1 kW of solar panels can be installed in a shadow-free space of 85 square feet on a metal shed.



## How many square meters does a 1kw solar photovoltaic panel cover

---



### How Many Solar Panels Per Acre?

Typical Sizes: Standard solar panels for residential and commercial use typically measure about 1.7 meters by 1 meter (5.5 feet by ...

### How Many Solar Panels for 1kW? Calculate Your Needs

To install a 1kW solar system, you need about 10 square meters of rooftop space. This takes into account the best tilt and direction of the solar panels for maximum sun exposure.



### How many square meters is 1 kilowatt of solar energy

One kilowatt of solar energy typically produces between 8 and 12 square meters of active solar panel space required, depending on the ...

### [How Many Panels In 1kW, 3kW, 5kW, 10kW, 20kW ...](#)

Here are the number of panels you will need: If you are using only 100-watt solar panels, you will



need 50 100-watt solar panels for a 5kW solar system (since ...



### How Much Area Required for 1kW Solar Plant?

Knowing the size of a 1kW solar panel in terms of energy generation and dimensions is crucial. Each panel has an area of about 1.6-1.8 square meters, thereby implying that the area ...

### **How many square meters are 10kw photovoltaic solar ...**

1. Typically, solar panels rated for 300 W to 400 W require about 1.6 to 2.0 square meters each,
2. Therefore, a 10 kW system may consist of ...



### What is the Size of a 1kW Solar Panel?

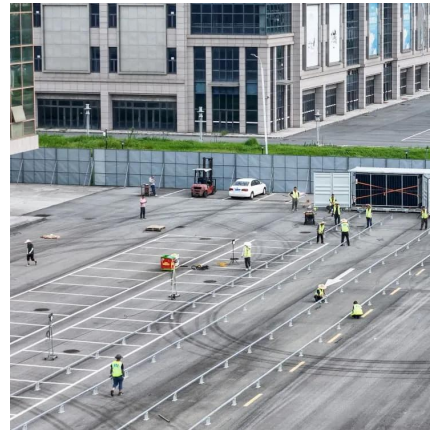
A typical residential rooftop installation of a 1kW solar system would require approximately 5-7 panels, with each panel occupying an average of 17.6 square feet (1.63 ...





## Solar Panel Sizes And Wattage , Sizing, Dimensions ...

The size or dimensions of the solar panels, measured in height by width, will determine the number of solar panels that will fit on your roof and ...



## How much electricity can one square meter of solar panels ...

The method for calculating the power of a solar panel is as follows: length \* width \* solar cell conversion efficiency \* 0.1=power (in centimeters). So, how much electricity can a ...

## How Much Energy Do Solar Panels Produce Per ...

Solar panels are a great way to produce renewable energy and help reduce your carbon footprint. But how much energy do solar panels ...



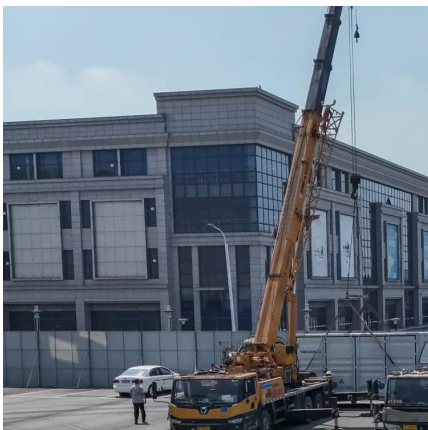
## Total Area Required for Solar Panel Installation Calculator

Calculate the total area needed for your solar panel installation quickly and accurately with our easy-to-use solar panel area calculator.



## How many square meters of space is required per kw ...

Typical solar panels range from 250W to 400W, translating to an area of about 1.6 to 2.2 square meters per panel, leading to a total space ...



## How Many Houses Can A Solar Farm Power?

4 days ago · An acre of solar panels can power 37 to 38 homes annually, depending on factors like location and panel efficiency. Solar panel efficiency is an essential factor determining the ...

## A Guide on Calculating Area Required for Solar Panel Installation

At the bottom line, according to the thumb rule of the solar industry, 1 kW of solar panel can be installed in a 100 square feet area having no shaded space on the roof.



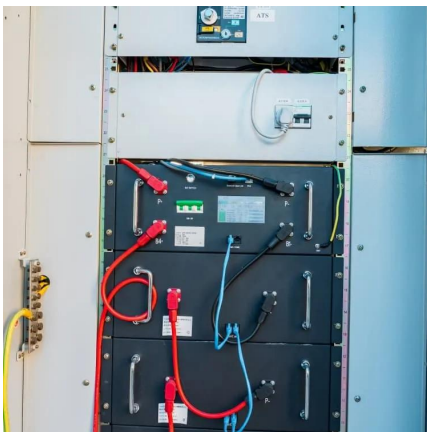
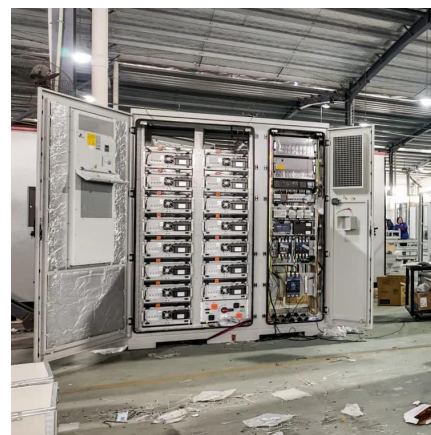


## How many square meters is one kilowatt solar panel

Utilizing one-kilowatt solar panels plays a pivotal role in responding to sustainability objectives efficiently. Understanding that a one-kilowatt ...

## Solar Panel Calculator

A typical value might be around 15-20%.  
Calculate Total Solar Panel Power (W): Use the formula above to find out how much total power your solar panels need to produce. Calculate Total ...



## [How Much Area Required for 1kW Solar Plant?](#)

Each panel has an area of about 1.6-1.8 square meters, thereby implying that the area required for 1kW solar panel amounts to nearly 80-100 square feet for a 1-kW solar system.

## [How many kw is one square meter solar panel?](#)

To determine the energy output of a solar panel measured per square meter, several factors must be considered, including panel efficiency, ...





## How many square meters is 1 kilowatt of solar energy

One kilowatt of solar energy typically produces between 8 and 12 square meters of active solar panel space required, depending on the efficiency of the panels, amount of ...



## How much does a solar panel actually produce?

If a panel has a total surface area of 2 m<sup>2</sup> and is rated at 400 watts, it has an efficiency of 20%  
Area of panel is determined and is divided into its watt ...



## How Big Is A 1Kw Solar Panel? [Updated: September 2025]

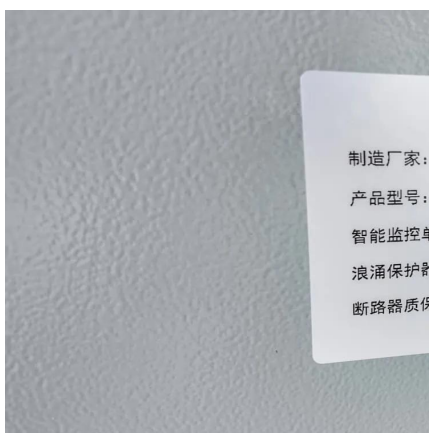
A 1kW solar panel typically requires up to 100 square feet of space and produces an estimated 150 watts of power. The standard dimensions for a residential solar panel are 66×40 ...





## How many square meters of photovoltaic panels are 1kw

Multiply the size of one solar panel in square meters by 1,000 to convert it to square centimeters. Example: If a solar panel is 1.6 square meters, the calculation would be 1.6 & #215; 1,000 = ...



## How many square meters of space is required per kw solar panel?

Typical solar panels range from 250W to 400W, translating to an area of about 1.6 to 2.2 square meters per panel, leading to a total space requirement of around 5 to 10 square ...

## How many square meters is one kilowatt solar panel , NenPower

Utilizing one-kilowatt solar panels plays a pivotal role in responding to sustainability objectives efficiently. Understanding that a one-kilowatt system will occupy roughly 6 to 8 ...



## Solar Panel Power Per Square Meter: How to Calculate Efficiency

Final Words Calculating the solar panel power per square meter is an essential step in understanding the efficiency and potential of solar energy systems. By considering factors ...



### What is the Area of a 1 kW Solar Panel?

Therefore, in order for this solar panel to produce 1000 watts of electricity, it would need an area of approximately 5 square meters (1000 watts / 200 watts = 5 square meters).



### **A Guide on Calculating Area Required for Solar Panel ...**

At the bottom line, according to the thumb rule of the solar industry, 1 kW of solar panel can be installed in a 100 square feet area having no ...

### **How Many Solar Panels for 1kW?**

To install a 1kW solar system, you need about 10 square meters of rooftop space. This takes into account the ...





## **Total Area Required for Solar Panel Installation ...**

Calculate the total area needed for your solar panel installation quickly and accurately with our easy-to-use solar panel area calculator.

## **Contact Us**

---

For catalog requests, pricing, or partnerships, please visit:  
<https://www.talbert.co.za>