

How many square meters are there per watt of solar panels





Overview

What is solar panel watts per square meter (W/M)?

Solar panel watts per square meter (W/m) measures the power output of a solar panel based on its size. Compare solar panels to see which generates most electricity per square meter. A higher W/m value means a solar panel produces more power from a given area. This can help you determine how many solar panels you need for your energy needs.

What is watts per square meter?

Watts per square meter is a measurement that quantifies the power output of solar panels relative to their surface area. It indicates how much electricity a solar panel produces per space unit, allowing for comparisons between different panel types and sizes.

How much power does a solar panel produce?

The power output of a solar panel depends on various factors, including its efficiency, the intensity of sunlight, and environmental conditions. On average, a standard solar panel with an area of 1 square foot can produce around 10-20 watts of power.

How much solar energy is received per square meter?

The amount of solar intensity received by the solar panels is measured in terms of square per meter. The sunlight received per square meter is termed solar irradiance. As per the recent measurements done by NASA, the average intensity of solar energy that reaches the top atmosphere is about 1,360 watts per square meter.

What is a solar power per square meter calculator?

It also includes wiring, inverter, charge controller, and battery bank (if used). A solar power per square meter calculator takes details regarding these factors and then gives the accurate output generated by the solar panel per



square meter. After this, it's time to learn about solar panel output calculators.

How much sunlight can a solar panel produce?

Usually, the typical amount can be 1,000 watts of sunlight per square meter of the panel. As we have mentioned before, average domestic solar panels hold a capacity ranging from 1,000 watts to 4,000 watts. Location is another factor that can have a big influence on power production.



How many square meters are there per watt of solar panels



2025 Solar Panel Costs: Ultimate Guide to Pricing and ...

Today's premium monocrystalline solar panels typically cost between 30 and 50 cents per Watt, putting the price of a single 400-watt solar ...

How to Understand Solar Panel Watts Per Square Meter

On average, monocrystalline panels can produce between 150 to 220 watts per square meter, making them a popular choice for residential and commercial solar installations.



Solar Panel Efficiency: Watts Per Square Meter Explained

Premium panels on the market today boast efficiencies upward of 22%, pushing the envelope to around 220 watts per square meter. This leap in efficiency isn't just a technical triumph; it's a ...

How Much Power (Watts) does a Solar Panel Produce?

And it has 16 panels, each of which is about 1.6 square meters (m²) in size. They are rated to



generate approximately 265 watts (W) of power (in ideal conditions). To calculate the output ...



How many square meters of solar panels are there in ...

Silicon panels are the most common and generally have higher efficiency ratings of around 15-22%, translating into larger energy output per ...

Solar Panel Dimensions Sizes and Wattage

Monocrystalline solar panels They comprise monocrystalline silicon cells, which offer high efficiency and a neat aesthetic (black-colored cells). Their dimensions vary ...



How Much Power (Watts) does a Solar Panel Produce?

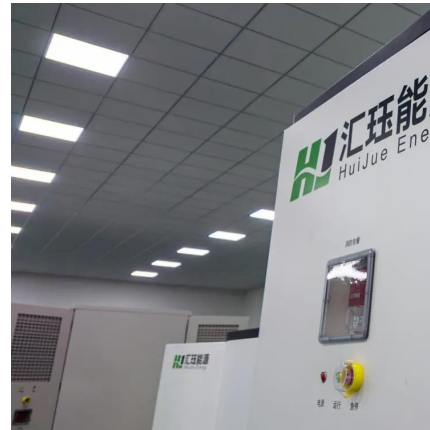
And it has 16 panels, each of which is about 1.6 square meters (m²) in size. They are rated to generate approximately 265 watts (W) of power (in ideal ...





How many square meters of solar panels does a family need?

The efficiency of solar panels currently ranges from 150 to 200 watts peak per square meter (Wp/m²). For our calculations, we will therefore use an average value of 175 Wp/m². Note: This ...

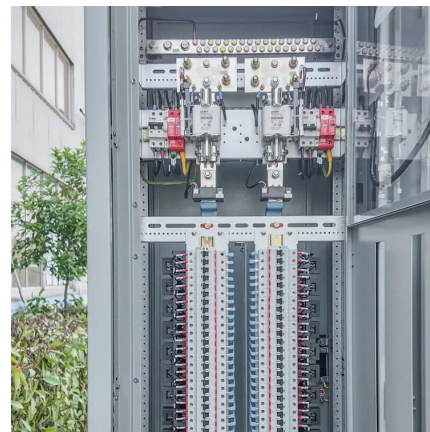


[Solar Panel Watts Per Square Meter Explained](#)

Learn how to measure solar panel efficiency using solar panel watts per square meter with this comprehensive guide.

Watts Per Square Meter Solar Panel - The Go-to Guide

Watts per square meter (W/m²) is the power density of sunlight falling on a given area of solar panels. In the context of solar panels, it refers ...



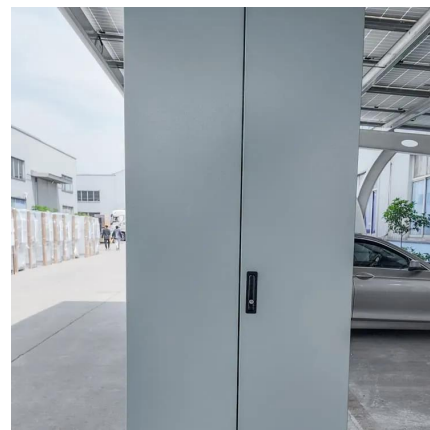
[Solar Power per Square Meter Calculator](#)

As per the recent measurements done by NASA, the average intensity of solar energy that reaches the top atmosphere is about 1,360 watts per square meter. You can ...



Solar Panels Watts per Square Meter

So, when we say "watts per square meter," we are essentially measuring how much power a solar panel can produce relative to its physical size. This metric, watts per square ...

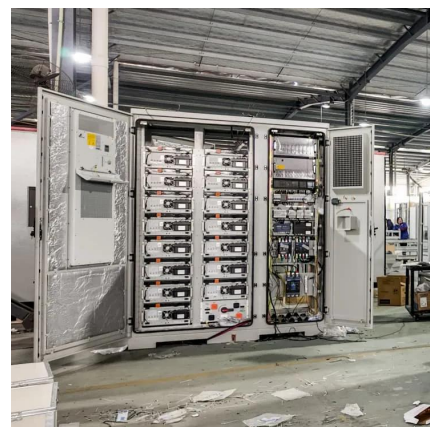


How Many Solar Panels Do I Need?

Discover how many solar panels you need for your property with our helpful guide from Wickes Solar, powered by Solar Fast.

Watts Per Square Meter Solar Panel - The Go-to Guide

Watts per square meter (W/m^2) is the power density of sunlight falling on a given area of solar panels. In the context of solar panels, it refers to the amount of electrical power a ...



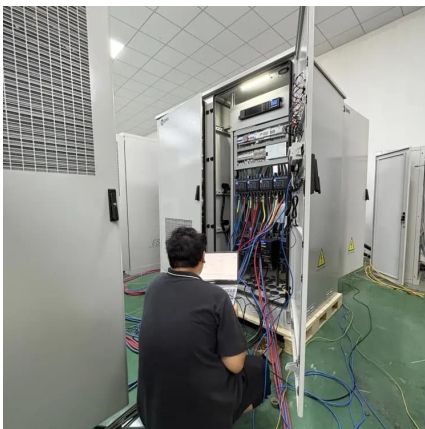


[How Many Watts Does A Solar Panel Produce](#)

How do you determine how much electricity A solar panel Produces? Solar panels differ in manufacturing, efficiency, and output, so it is ...

Solar Panel Output per Square Meter: Efficiency ...

Solar panels have become a cornerstone of renewable energy, but many wonder: How much power can a single square meter of solar panels actually produce? ...



Solar Panel Output per Square Meter: Efficiency ...

Discover how much electricity solar panels generate per square meter, explore efficiency factors, technology comparisons, and future innovations in ...

[Solar Panels Watts per Square Meter](#)

Solar panels are at the forefront of innovation and sustainability when it comes to renewable energy sources. Harnessing the power of the sun ...



Total Area Required for Solar Panel Installation ...

Calculate the total area needed for your solar panel installation quickly and accurately with our easy-to-use solar panel area calculator.



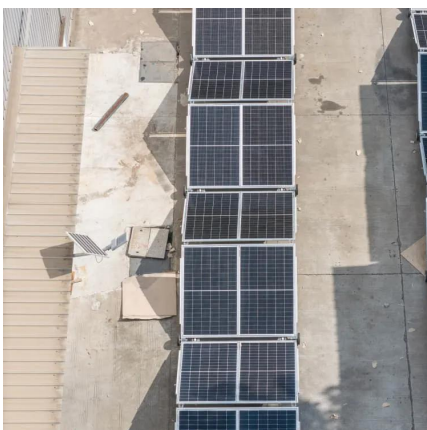
How many watts per square meter is a solar panel? , NenPower

The average power output of a solar panel is approximately 150 to 400 watts per square meter, depending on various factors including the technology used and the angle of ...



[A Complete Guide To Solar Panel Output](#)

Working principle of a solar panel (Reference: saurenergy) 1. Solar Panel Output Per Day Work out how much electricity--measured in ...





Solar irradiance

The SI unit of irradiance is watts per square metre ($\text{W/m}^2 = \text{Wm}^{-2}$). The unit of insolation often used in the solar power industry is kilowatt hours per square ...



[How many square meters of solar panels does a ...](#)

The efficiency of solar panels currently ranges from 150 to 200 watts peak per square meter (Wp/m^2). For our calculations, we will therefore use an average ...

Solar Panel Output per Square Meter: Efficiency Factors & Future

...

Solar panels have become a cornerstone of renewable energy, but many wonder: How much power can a single square meter of solar panels actually produce? Let's break down the ...



Solar Panel Sizes, Dimensions & Weight , Solar Choice

There isn't one single answer to the question "How big are solar panels?" but the size of the solar panels you install for residential or ...



How many watts does solar energy produce per ...

The average solar energy generation is approximately 150 to 250 watts per square meter under optimal conditions, 2. However, this can vary ...

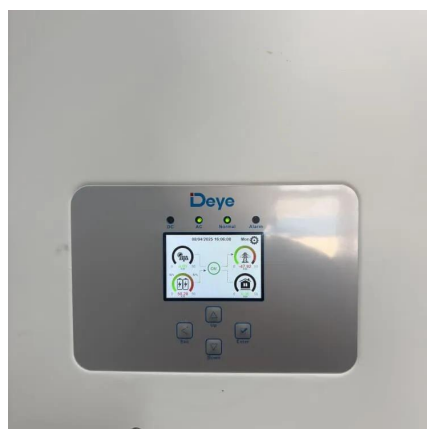


Solar Panels Watts per Square Meter

So, when we say "watts per square meter," we are essentially measuring how much power a solar panel can produce relative to its physical ...

How Much Energy Do Solar Panels Produce Per Square Foot?

Solar panels are a great way to produce renewable energy and help reduce your carbon footprint. But how much energy do solar panels actually produce per square foot? The ...





[Solar Power per Square Meter Calculator](#)

On average, monocrystalline panels can produce between 150 to 220 watts per square meter, making them a popular choice for residential and ...

How many square meters of photovoltaic panels are required ...

On average, you can expect around 850 to 1,100 kilowatt-hours(kWh) of solar energy per square meter (approximately 10.764 square feet) annually. Panel Efficiency: Solar panel efficiency ...



Contact Us

For catalog requests, pricing, or partnerships, please visit:
<https://www.talbert.co.za>