

How many square meters are there for a 10 000-watt solar panel





Overview

What is a solar power per square meter calculator?

It also includes wiring, inverter, charge controller, and battery bank (if used). A solar power per square meter calculator takes details regarding these factors and then gives the accurate output generated by the solar panel per square meter. After this, it's time to learn about solar panel output calculators.

How many watts per square meter is a solar panel?

Solar Panel Output = $1000 \text{ W/m}^2 \times 1.5 \text{ m}^2 = 1500 \text{ watts}$ Watts per square meter are a critical metric for several reasons: 1. Efficiency Comparison: Comparing the W/m^2 among different solar panels allows consumers to assess the efficiency of various models.

How much power does a solar panel produce?

The power output of a solar panel depends on various factors, including its efficiency, the intensity of sunlight, and environmental conditions. On average, a standard solar panel with an area of 1 square foot can produce around 10-20 watts of power.

How much solar energy is received per square meter?

The amount of solar intensity received by the solar panels is measured in terms of square per meter. The sunlight received per square meter is termed solar irradiance. As per the recent measurements done by NASA, the average intensity of solar energy that reaches the top atmosphere is about 1,360 watts per square meter.

How many Watts Does a solar panel need?

You've calculated your solar panel needs, so it's time to check where you can get photovoltaic cells that are the closest to the ideal. Typically, the output is 300 watts, but this may vary, so make sure to double-check! If the area



occupied is smaller than your roof area, the system should fit just right!.

How do you calculate solar panel output in watts per square meter?

The formula to calculate the solar panel output and how much energy solar panels produce (in watts) using watts per square meter is as follows: Solar Panel Output (W) = Watts per Square Meter (W/m^2) \times Area of Solar Panel (m^2)



How many square meters are there for a 10 000-watt solar panel

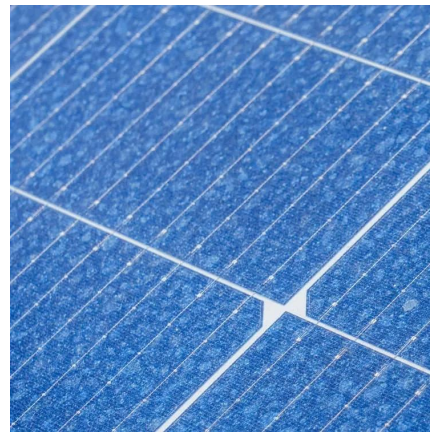


How to Understand Solar Panel Watts Per Square Meter

For instance, if the combined size of the 20 panels is 30 square meters, the watts per square meter would be 200 (6,000 watts / 30 square ...

POWER PER SQUARE METER CALCULATOR

This metric shows how much power a solar panel produces per square meter of surface area under standard conditions.. The average solar energy received ...



Solar Energy Per Square Meter

Solar Energy Per Square Meter Solar energy per square meter, or "watts per square meter" (W/m^2), is a measure of the amount of solar energy ...

[Solar Panel Calculator: How Many Do You Need?](#)

Solar panel sizes are measured in Watts (W), which is a rate of electrical flow. We'll use your



energy use in Watt-hours to determine how many Watts of solar panels you need.



Solar Panels Sizes and Weights (All Sizes)

100-watt solar panels that are 8.53 kilograms and measure 1.19 meters long by 0.16 meters wide have an area of 0.65 square meters. They ...



How Many Solar Panels are Needed for 100 MW?

As the world's focus on renewable energy continues to increase, solar energy is becoming more and more popular as a clean and sustainable energy source. Among many ...



Solar Panel Dimensions Sizes and Wattage

In terms of dimensions, a 300w monocrystalline or polycrystalline solar panel typically has a length of around 1.6 meters and a width of 1 meter. However, these dimensions ...





Solar Panel Calculator

The solar panel calculator can be used to figure out how many solar panels you need and determine the right system size and roof area requirements.



Solar Panel Ratings Explained - Wattage, Current, ...

An "Air Mass" of 1.5 A "Solar Irradiance" of 1000 Watts per square meter (W/m^2) And a "Solar Cell Temperature" of 25°C . Manufacturers ...

Calculation of total area required for solar panel installation

Panel Wattage (P_{panel}) Panel wattage is the power output capacity of a single solar panel under standard test conditions. It is specified by the manufacturer and can vary ...



Solar Panel Calculator

Whether you want to help our planet or just save some money, the solar panel calculator might be just the tool you want to use. It's created to help you find the perfect solar panel size for your ...



[Solar Power per Square Meter Calculator](#)

Whether you want to help our planet or just save some money, the solar panel calculator might be just the tool you want to use. It's created to help you find ...



How to Calculate the Surface Area Required by Solar Panels

Lets assume that you want to install 10 solar panels rated at 100 Watts each and having a conversion efficiency of 18%. The total power output of the solar system can be ...

[How Many Solar Panels Do I Need? \(2025 Guide\)](#)

How Many Solar Panels to Power a House?
Another common question is how many solar panels do I need based on the square footage of ...





[Solar Panel Size Estimator Calculator](#)

The Solar Panel Size Estimator Calculator is a tool designed to help you determine the appropriate size of solar panels needed for your ...

Solar Rooftop Calculator: How Many Solar Panels ...

We have calculated how many of either 100-watt, 300-watt, or 400-watt solar panels you can put on roofs ranging from very little 300 sq ft roof to huge ...



Total Area Required for Solar Panel Installation Calculator

Calculate the total area needed for your solar panel installation quickly and accurately with our easy-to-use solar panel area calculator.

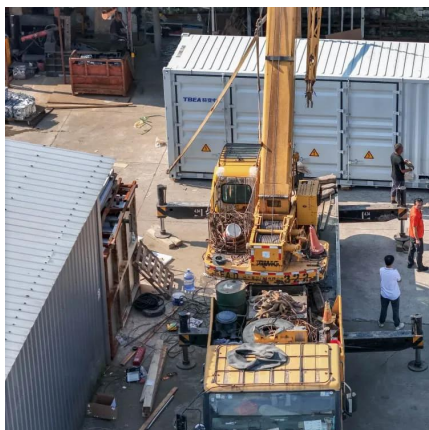
[Solar Power per Square Meter Calculator](#)

A solar power per square meter calculator takes details regarding these factors and then gives the accurate output generated by the solar panel per square meter.



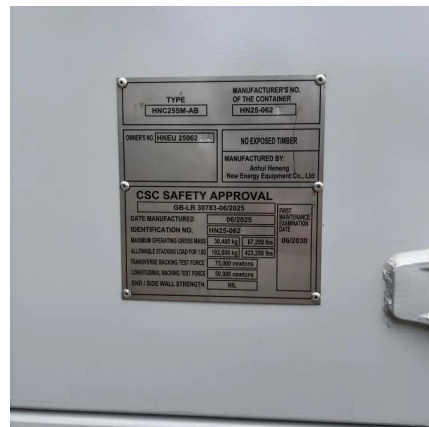
[How Many Square Meters Is One Solar Panel?](#)

This article will delve into the average size of a solar panel in square meters. We will explore the standard dimensions, the typical energy output associated with these sizes, ...



Solar Rooftop Calculator: How Many Solar Panels Can

We have calculated how many of either 100-watt, 300-watt, or 400-watt solar panels you can put on roofs ranging from very little 300 sq ft roof to huge 5,000 sq ft roof, and summarized the ...



[Solar Panel Size Estimator Calculator](#)

Upon entering these details, the calculator will generate an estimate of the number of solar panels required. Avoid common pitfalls like ...





[Solar Panel Watts Per Square Meter Explained](#)

Learn how to measure solar panel efficiency using solar panel watts per square meter with this comprehensive guide.



[Solar Panel Calculator: How Many Do You Need?](#)

With basic information and a simple calculation, you can figure out how many solar panels you need. It doesn't matter if you want to power your home, put solar panels on an RV, ...

[Solar Panel Calculator: How Many Do You Need?](#)

With basic information and a simple calculation, you can figure out how many solar panels you need. It doesn't matter if you want to power your ...



Watts Per Square Meter Solar Panel - The Go-to Guide

Solar Panel Output (W) = Watts per Square Meter (W/m^2) \times Area of Solar Panel (m^2) For instance, if a solar panel has an area of 1.5 square meters and it gets exposed to ...



Total Area Required for Solar Panel Installation ...

Calculate the total area needed for your solar panel installation quickly and accurately with our easy-to-use solar panel area calculator.



How much electricity can one square meter of solar ...

The method for calculating the power of a solar panel is as follows: length * width * solar cell conversion efficiency * 0.1=power (in centimeters). ...

How many square meters does the solar panel use?

1. Solar panels typically require between 1.5 to 2.5 square meters per panel, depending on their design and efficiency, 2. On average, a ...





Watts Per Square Meter Solar Panel - The Go-to Guide

Solar Panel Output (W) = Watts per Square Meter (W/m^2) \times Area of Solar Panel (m^2) For instance, if a solar panel has an area of 1.5 square ...

[Solar Panel Size Estimator Calculator](#)

Upon entering these details, the calculator will generate an estimate of the number of solar panels required. Avoid common pitfalls like underestimating energy consumption by ...



How to Calculate the Surface Area Required by Solar ...

Lets assume that you want to install 10 solar panels rated at 100 Watts each and having a conversion efficiency of 18%. The total power output ...

Contact Us

For catalog requests, pricing, or partnerships, please visit:
<https://www.talbert.co.za>