

How many square meters are 50MW solar panels





Overview

The average solar panel measures between 1.6 to 2 square meters. 3. A typical utility-scale solar installation implies approximately 4 to 5 acres of land are needed for every megawatt. What is solar panel watts per square meter (W/M)?

Solar panel watts per square meter (W/m) measures the power output of a solar panel based on its size. Compare solar panels to see which generates most electricity per square meter. A higher W/m value means a solar panel produces more power from a given area. This can help you determine how many solar panels you need for your energy needs.

What is a solar power per square meter calculator?

It also includes wiring, inverter, charge controller, and battery bank (if used). A solar power per square meter calculator takes details regarding these factors and then gives the accurate output generated by the solar panel per square meter. After this, it's time to learn about solar panel output calculators.

How many acres does a 1 MW solar power plant need?

Thus, a 1 MW solar power plant with crystalline panels (about 18% efficiency) will require about 4 acres, while the same plant with thin film technology (12% efficiency) will require about 6 acres. The area required by thin film panels is about 50% more than that for the crystalline, as the latter are about 50% more efficient than the former.

How do you measure solar panel efficiency?

To measure this efficiency, use solar panel Watts per square meter (W/m). This metric shows how much power a solar panel produces per square meter of surface area under standard conditions. By knowing W/m, you can: Install solar panels and maximize your energy output! What is Solar Panel Efficiency?

.



What is solar panel efficiency?

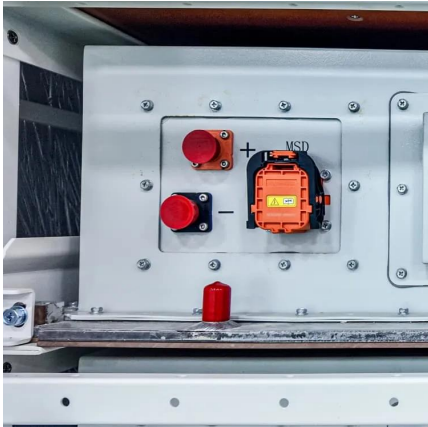
Solar panel efficiency is crucial for a solar power system's success. High-efficiency panels convert more sunlight into electricity, boosting overall output. To measure this efficiency, use solar panel Watts per square meter (W/m). This metric shows how much power a solar panel produces per square meter of surface area under standard conditions.

How much solar energy is received per square meter?

The amount of solar intensity received by the solar panels is measured in terms of square per meter. The sunlight received per square meter is termed solar irradiance. As per the recent measurements done by NASA, the average intensity of solar energy that reaches the top atmosphere is about 1,360 watts per square meter.



How many square meters are 50MW solar panels

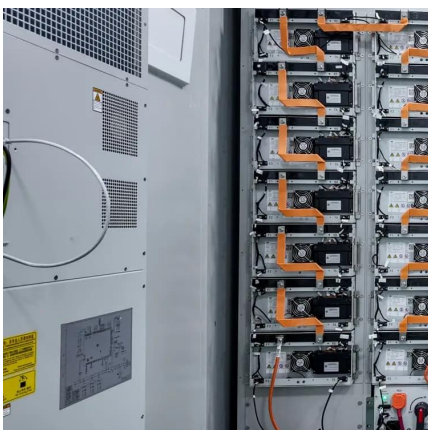
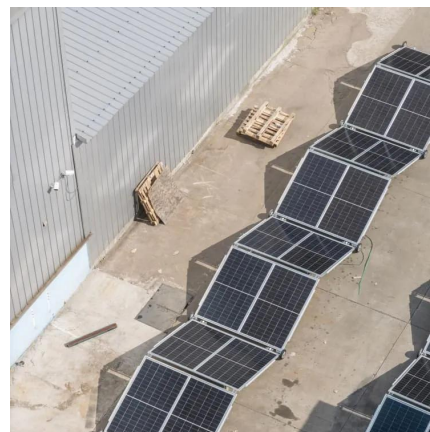


Total Area Required for Solar Panel Installation ...

Calculate the total area needed for your solar panel installation quickly and accurately with our easy-to-use solar panel area calculator.

(PDF) Design of 50 MW Grid Connected Solar Power ...

PDF , On May 9, 2020, Krunal Hindocha and others published Design of 50 MW Grid Connected Solar Power Plant , Find, read and cite all the research you ...



[How Many Solar Panels Can Fit on One Acre of ...](#)

A single acre can hold as many as 2,000 solar panels. This shows the huge potential of solar energy. It means we can use land efficiently for ...

Solar Panel Calculator

Calculate Total Solar Panel Area (m²): Once you know the total power, divide it by the power and area of a single solar panel to find out how many



panels and how much space you need. Keep ...

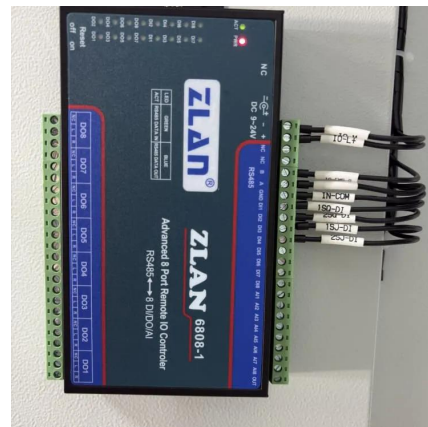


How many square meters of solar panels are needed for 500kw

The efficiency of solar panels significantly impacts the calculation of how many square meters are necessary to yield a 500 kW power output. Through understanding panel ...

[Solar Power per Square Meter Calculator](#)

A simple rule of thumb is to take 100 sqft for every 1kW of solar panels. Extrapolating this, a 1 MW solar PV power plant should require about 100000 sqft (about 2.5 ...



[Solar Panel Watts Per Square Meter Explained](#)

Compare solar panels to see which generates most electricity per square meter. A higher W/m value means a solar panel produces more power from a given ...



Solar Power per Square Meter Calculator

A solar power per square meter calculator takes details regarding these factors and then gives the accurate output generated by the solar panel per square meter.



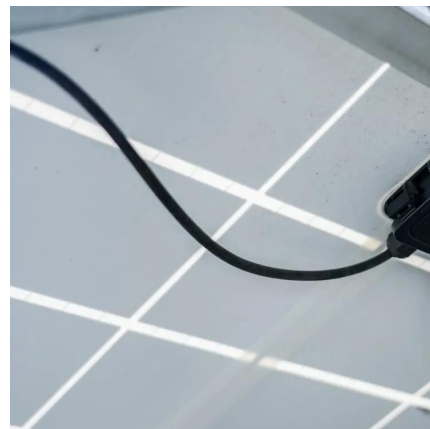
Solar Panel Output per Square Meter: Efficiency Factors & Future

...

When panel efficiency reaches 30%, a 100m² roof could generate 50,000kWh/year - enough to power 20 average homes. The solar revolution isn't coming; it's already here. Solar panels ...

Photovoltaics

W stands for watts, kW for kilowatts. The p at Wp and kWp means 'peak'. Wp and kWp are the units for the nominal power. This is the power of the system at ...



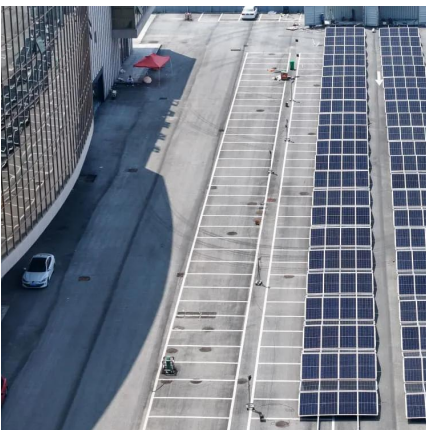
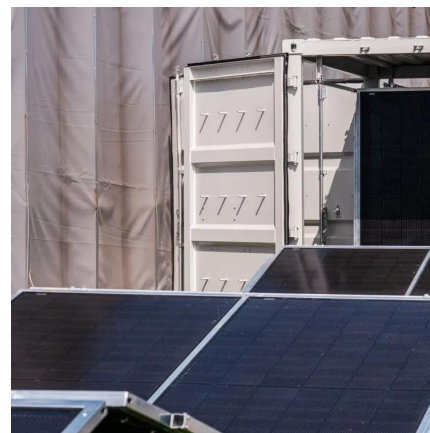
Area Required for Solar PV Power Plants

A simple rule of thumb is to take 100 sqft for every 1kW of solar panels. Extrapolating this, a 1 MW solar PV power plant should require about 100000 sqft (about 2.5 ...



How Many Solar Panels Do I Need For My Home?

Ensure that your roof has sufficient space to install the solar panels. Typically, each standard solar panel occupies about 1.6 square meters. Therefore, ...



How to Calculate the Surface Area Required by Solar ...

Lets assume that you want to install 10 solar panels rated at 100 Watts each and having a conversion efficiency of 18%. The total power output ...

How to Calculate the Surface Area Required by Solar Panels

How can you do a rough estimate of the area required by the solar panels? Here is a quick and easy way to go about it. Lets assume that you want to install 10 solar panels rated ...





A Guide On 1 MW Solar Power Plant: Types, Cost, ...

Do you want to gain significant insights into the 1 MW solar power plant established in the country? Read this blog to uncover various aspects of ...

[How Many Square Meters Is One Solar Panel?](#)

This article will delve into the average size of a solar panel in square meters. We will explore the standard dimensions, the typical energy output associated with these sizes, ...

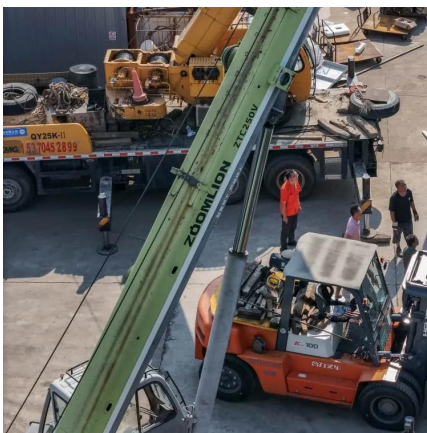


How many square meter space do we need for 1 MWp solar Power ...

what what size panel are we assuming to install?
lets say 260 watt panels? $1\text{mw} \div 260 = 3,846$ of 260 watt panels. For ground mount type installation of 28 panels is ...

[How Many Homes Can A Solar Farm Power?](#)

A single home typically requires 20 to 25 solar panels, generating between 300 to 400 watts. The size of a 1 Megawatt solar farm typically covers 4 to 5 acres (approximately 16, ...



Solar Panel Watts Per Square Meter Explained

Compare solar panels to see which generates most electricity per square meter. A higher W/m value means a solar panel produces more power from a given area. This can help you ...

Solar Panel Calculator

Use our solar panel calculator to find your solar power needs and what panel size would meet them.



How to Calculate the Area Required for Solar Panel Installation

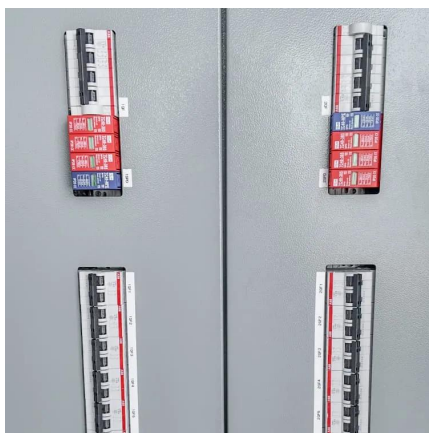
Determine Panel Size: Solar panel sizes vary, but a common size is around 1.7 square meters (18.3 square feet) per panel. To calculate the number of panels, divide the ...





Solar Panel Calculator , Lowe's

Learn to calculate how many solar panels you need for your home with Lowe's. We've even included a solar panel calculator for quick work.



How Many Solar Panels Do I Need?

1 day ago· How many solar panels does a 2000 sq ft home need? It depends on usage, not square footage, but most 2,000 sq ft homes use about 1,000-1,200 kWh per month, which ...

A Guide on Calculating Area Required for Solar Panel ...

Conclusion At the bottom line, according to the thumb rule of the solar industry, 1 kW of solar panel can be installed in a 100 square feet area ...



[1 MW Solar Power Plant Cost With Complete Detail](#)

1 mw solar power plant cost, how much acre land required, investment models, return on investment, profit and complete detail in India.



How many square meters are a megawatt solar panel?

Each of these panels, depending on their dimensions, would typically require about 1.7 square meters, leading to a total area requirement that may exceed 5,000 square ...



Solar Panel Output per Square Meter: Efficiency ...

When panel efficiency reaches 30%, a 100m² roof could generate 50,000kWh/year - enough to power 20 average homes. The solar revolution ...

How to Calculate the Surface Area Required by Solar ...

How can you do a rough estimate of the area required by the solar panels? Here is a quick and easy way to go about it. Lets assume that you ...





Total Area Required for Solar Panel Installation Calculator

Calculate the total area needed for your solar panel installation quickly and accurately with our easy-to-use solar panel area calculator.

Contact Us

For catalog requests, pricing, or partnerships, please visit:
<https://www.talbert.co.za>