

# **How many photovoltaic strings can the inverter connect to**





## Overview

---

How many panels can an inverter have in a string?

Take your inverter's maximum DC input voltage. Divide it by your adjusted Voc. This gives you the maximum number of panels you can have in a string. For instance, if your inverter's max input is 1000V: You can't have a part of a panel, so round down to the nearest whole panel. In this case, you could have up to 22 panels in a string. 4.

What is a solar panel & a string?

A solar panel, or we can say a PV module, is made up of several cells, where multiple solar panels are wired in a series or parallel. The design is known as a solar array. A string consists of solar panels that are wired in a series set to one input on a solar string inverter.

What is a string inverter?

A panel string is a group of panels wired into a single input on your inverter. For example, this grid-tied system contains 24 Mission Solar 360W panels and one SMA Sunny Boy 7700W inverter. The inverter (appropriately called a string inverter) has three string inputs.

How many solar panels are in a solar string?

So, based on these calculations, for this specific scenario, you could have a solar string of 19 panels. There are online calculators available for string sizing, such as the one found at AltEstore. These calculators can make it easier and more accurate to determine the appropriate string size for your specific set of conditions.

What is the maximum input voltage of a solar panel inverter?

The maximum input voltage of a solar panel inverter determines how you should set up your solar panels. Here's an example: If an inverter has a maximum input voltage of 600V and each panel produces 40V, you could



connect up to 15 panels in series ( $15 \times 40V = 600V$ ).

How many inputs does a string inverter have?

The inverter (appropriately called a string inverter) has three string inputs. This system is designed to connect three strings of 8 panels each into those inputs (totaling 24 panels). Why Does String Sizing Matter?

Inverters operate within a specific input voltage range, called the operating range.



## How many photovoltaic strings can the inverter connect to

---



### How to String Sizing

How do you string size your solar panels for your inverter or converter? Whether it's OutBack Power, Fronius, SMA or Victron converters.

### How Many Solar Panels Can I Connect to an Inverter?

This guide will discuss the factors that determine how many solar panels can be connected to an inverter, such as inverter specifications, wiring configurations, ...



### [Part 3: How to Design Grid-Connected Solar PV ...](#)

This is a the third installment in a three-part series on residential solar PV design. The goal is to provide a solid foundation for new system ...

### [Solar Panel Array: How to Size An Array](#)

Jim has decided that the 5kW Low-Voltage Off-Grid is his best inverter option. He now needs to size up his Solar Panel Array. He will need to ...



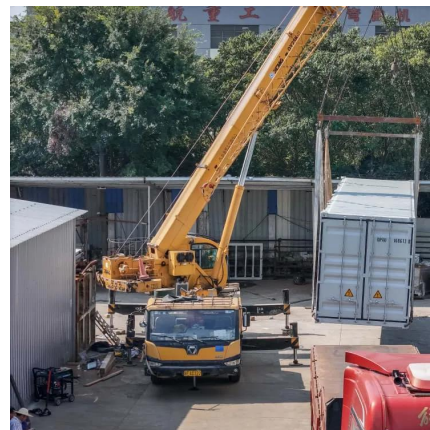
## How to Calculate PV String Size -- Mayfield Renewables

The maximum string size is the maximum number of PV modules that can be connected in series and maintain a maximum PV voltage below the maximum allowed input ...



## How do I know how many solar panels I can connect to my inverter?

If you're building or upgrading your solar system, it's important to know how many panels you can safely connect to your inverter. Your inverter's MPPT (Maximum Power Point ...



## How To String Solar Panels?

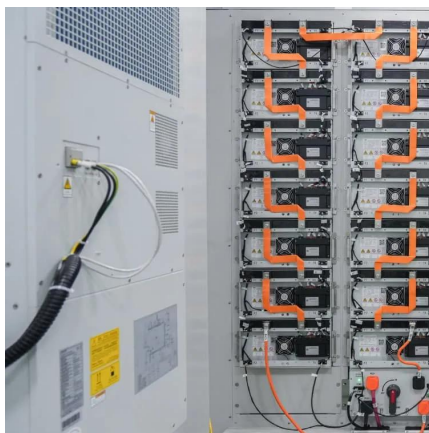
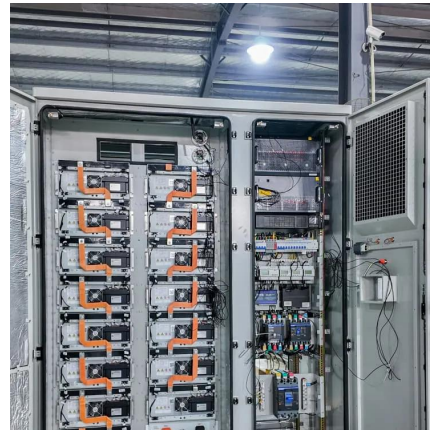
A string panel can be wired up to 8 solar panels into a single inverter input. Most inverters have three string inputs, which means it contains 24 solar panels.





## String Sizing Guide: How Many Solar Panels Can I String Into My Inverter?

We've written guides on how to size a grid-tied system, as well as sizing a battery bank for off-grid systems, which give you a pretty good idea of how much solar energy you need to produce to ...



## [Step-by-Step Guide: Connecting PV Panels to an ...](#)

Learn how to seamlessly connect PV panels to an inverter with our step-by-step guide. Take advantage of solar energy in your house and do ...

## How Many Solar Panels Can I Connect to an Inverter?

Learn how to optimize your solar power system by understanding how many solar panels can be connected to an inverter. Explore inverter specifications, wiring ...



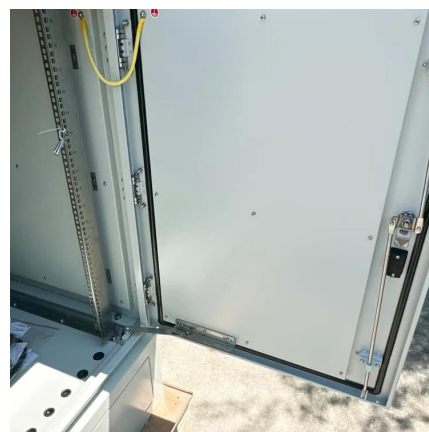
## String Sizing Guide: How Many Solar Panels Can I String Into My Inverter?

The inverter (appropriately called a string inverter) has three string inputs. This system is designed to connect three strings of 8 panels each into those inputs (totaling 24 ...



## Understanding PV Wiring in Series, Parallel and ...

Module stringing and the question of how many and in which orientations, voltage windows and, lest we forget, available roof space, play ...

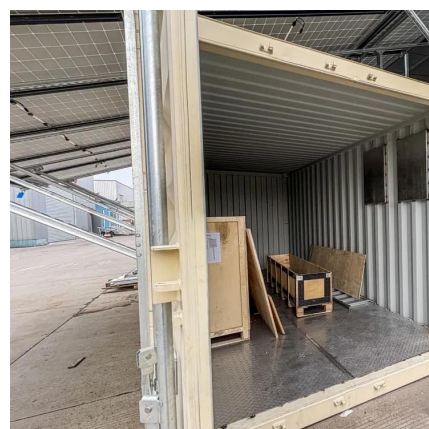


## What is Difference Between String And Array In Solar ...

Now, let us learn what is a solar panel string calculator. The maximum string size is the greatest number of PV modules that can be linked ...

## Solar String Sizing for Installers & Mistakes to Avoid

The maximum string size defines the number of panels that you can connect without causing the voltage to exceed the inverter's maximum input voltage. Exceeding this limit could result in ...



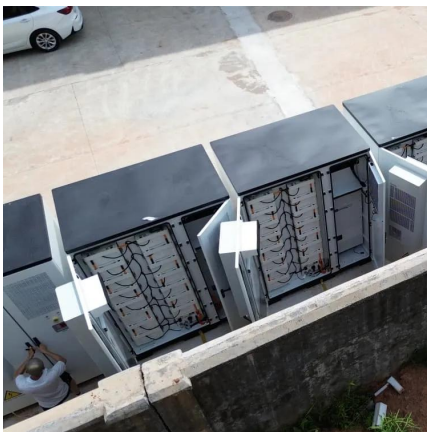


## How to Design Solar Panel Strings to Best Match ...

Most of the time, the output may only be around 70% of the rated power, and even in excellent weather conditions, it can only reach up to 90% of the rated ...

## How to Calculate PV String Size -- Mayfield Renewables

We've written guides on how to size a grid-tied system, as well as sizing a battery bank for off-grid systems, which give you a pretty good idea of how much solar energy you need to produce to ...



## [Solar Inverter String Design Calculations](#)

The following article will help you calculate the maximum number of modules per series string when designing your PV system.

## How Many Solar Panels Can I Connect to an Inverter? A ...

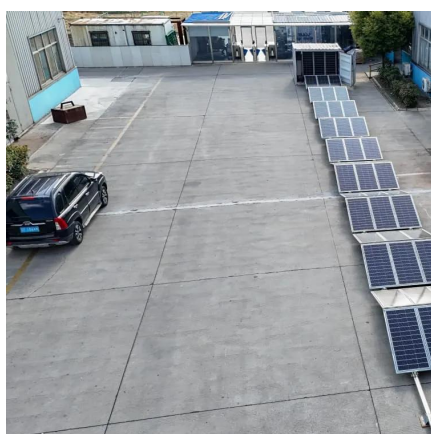
This guide will discuss the factors that determine how many solar panels can be connected to an inverter, such as inverter specifications, wiring configurations, and the use of charge controllers.





## How to Design Solar Panel Strings to Best Match Inverters

Most of the time, the output may only be around 70% of the rated power, and even in excellent weather conditions, it can only reach up to 90% of the rated power. In this article, ADNLITE ...



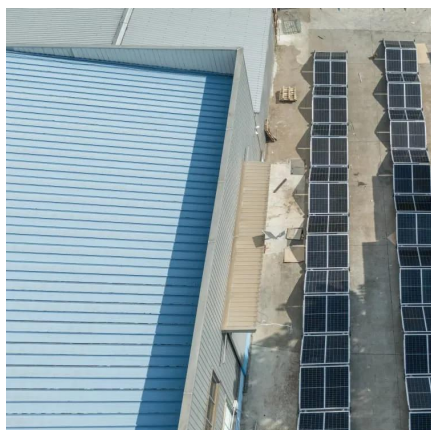
## [How to connect a string photovoltaic inverter](#)

Yes, photovoltaic inverters are available in three main types: string inverters, microinverters, and power optimizers. String inverters connect multiple solar panels in series, while microinverters ...



## [How-To Determing Solar String Size \(Examples\)](#)

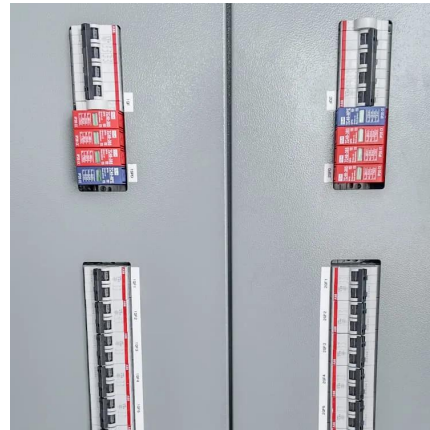
Determine your solar string size by considering panel & inverter specs, temperature effects, and calculating maximum string size. Consult a ...





## String Sizing Guide: How Many Solar Panels Can I String Into My ...

The inverter (appropriately called a string inverter) has three string inputs. This system is designed to connect three strings of 8 panels each into those inputs (totaling 24 ...



## How-To Determining Solar String Size (Examples + Calculator)

Determine your solar string size by considering panel & inverter specs, temperature effects, and calculating maximum string size. Consult a professional for accuracy.

## How To String Solar Panels?

A string panel can be wired up to 8 solar panels into a single inverter input. Most inverters have three string inputs, which means it contains ...



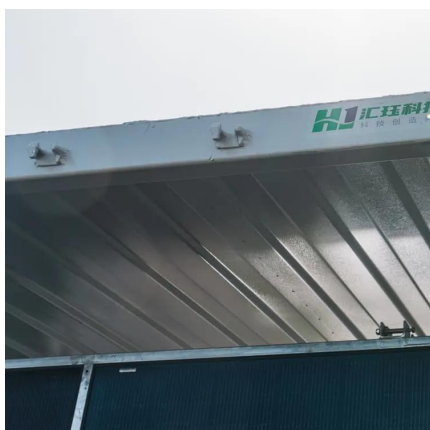
## How Many Photovoltaic Strings Should Your Inverter Handle?

How Many Photovoltaic Strings Should Your Inverter Handle? The Ultimate Guide Ever wondered why your neighbor's solar array produces 15% more energy than yours despite using identical ...



## Powerwall 3 DC System Sizing

Powerwall 3 can be configured as up to a AC rated inverter that can support up to a maximum DC system size of . DC is the absolute maximum solar system size that Powerwall 3 can support.



## Microinverters: Everything You Need to Know in 2025

Microinverters vs String Inverters The major difference between string (or central) inverters and microinverters is the number of solar panels they connect to. Traditional inverters ...

## How to determine the number photovoltaic panels in a string

1. Calculating maximum string size The maximum number of solar panels you can connect in a string is determined by the maximum input voltage of your inverter or charge controller. You ...



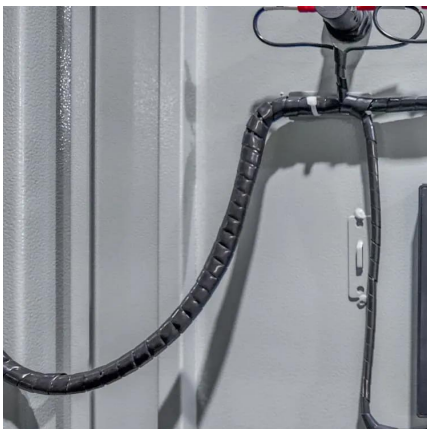


## Solar String Sizing for Installers & Mistakes to Avoid

The maximum string size defines the number of panels that you can connect without causing the voltage to exceed the inverter's maximum input voltage. ...

## Comparing Central vs String Inverters for Utility-Scale ...

String inverters convert DC power from "strings" of PV modules to AC and are designed to be modular and scalable. Smaller string inverters may ...



## [String Sizing: How to Calculate Solar String Size](#)

Solar string sizing refers to the amount of PV modules in series within your solar array. Learn how to calculate solar string size or use a solar ...

## Contact Us

---

For catalog requests, pricing, or partnerships, please visit:  
<https://www.talbert.co.za>