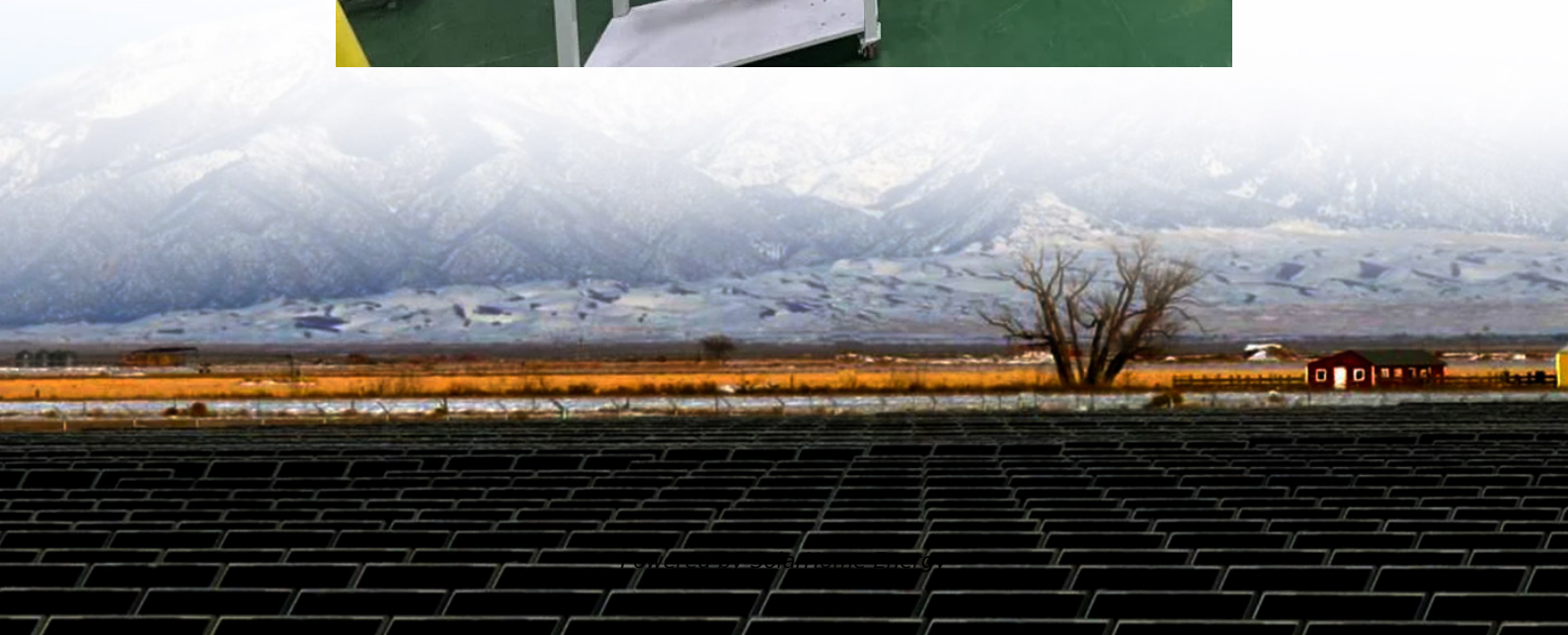


How many inverters can I use for 12v 120ah





Overview

Note! The battery size will be based on running your inverter at its full capacity
Assumptions 1. Modified sine wave inverter efficiency: 85% 2. Pure sine wave inverter efficiency: 90% 3. Lithium Battery: 100%.

What size inverter for a 200Ah battery?

To determine the appropriate inverter size for a 200Ah battery, consider the following: A 500VA inverter would be suitable, offering a balance between performance and battery life. For extended run times, consider larger inverters or additional batteries to meet higher power demands.

How many batteries can I connect to my inverter?

There is no set limit to how many batteries you can connect to your inverter. But you must understand how you connect your batteries together affects what you can and can't do! For example, connecting your batteries in series will be different to connecting in parallel.

What voltage should a 12V inverter run on?

The input voltage of the inverter should match the battery voltage. (For example 12v battery for 12v inverter, 24v battery for 24v inverter and 48v battery for 48v inverter)
Summary What Will An Inverter Run & For How Long?

.

What is the recommended battery size for an inverter?

Interpreting Results: Once you input the required data, the calculator will generate the recommended battery size in ampere-hours (Ah). For instance, if your power consumption is 500 watts, the usage time is 4 hours, and the inverter efficiency is 90%, the calculator might suggest a battery size of approximately 222 Ah.

How many batteries can a solar inverter charge?

This applies to all types of solar inverters regardless of size. The number of



batteries you can connect to an inverter cannot be more than 12 times the inverter charging current. A 20A charger can handle 240ah battery maximum. The formula is $A \times 12 = \text{battery capacity (ah)}$. If it is a 40A charger the limit is 480ah.

How many amps does a series battery inverter use?

So if the battery current limit is 20 amps, and there are two batteries in parallel, the inverter must provide 40 amps ($20A \times 2$ batteries). This is not the case if the battery bank is configured in a series, because all the batteries have a similar current. Connect Batteries in a Series.



How many inverters can I use for 12v 120ah



Inverter Calculator

In order to ensure that the capacity of your power inverter is sufficient to meet the required start up load, you must first determine the power consumption of the equipment or appliance you plan ...

Inverter Calculator

In order to ensure that the capacity of your power inverter is sufficient to meet the required start up load, you must first determine the power consumption of the ...



What Size Inverter Do I Need for a 200Ah Lithium Battery

How do you determine the right size inverter for a 200Ah lithium battery? The ideal inverter size depends on your power needs and the ...

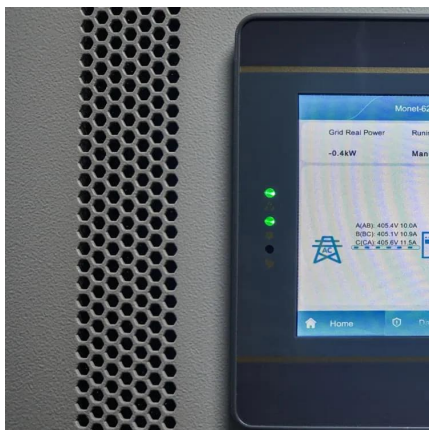
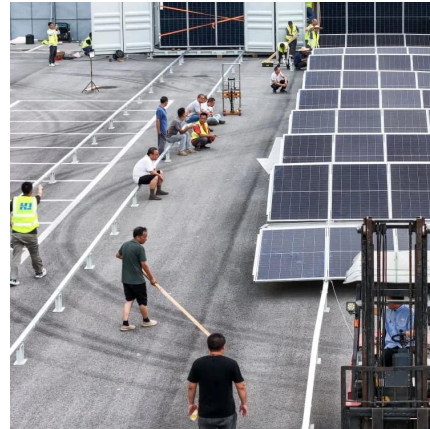


Can an Inverter Be Too Big for Your Battery System?

How to Calculate the Right Inverter Size for Your Battery Match the inverter's continuous wattage



rating to the battery's discharge capacity. For a 12V 200Ah battery (2.4kWh), a 2000W inverter ...



Connecting Multiple Batteries to an Inverter: Easy Guide

There is no set limit to how many batteries you can connect to your inverter. But you must understand how you connect your batteries together affects what you can and can't do! For ...

[How Big of an Inverter Can My Car Battery Handle?](#)

When considering connecting an inverter to your car battery, the first question we need to clarify is: how much power can your car battery ...



Connecting Multiple Batteries to an Inverter: Easy Guide

There is no set limit to how many batteries you can connect to your inverter. But you must understand how you connect your batteries together affects what ...



What Size Inverter Do You Need For Your Caravan?

You can easily add an extra 200Ah battery to double the power storage of your caravan's off-grid setup. The latest 12v power brand making ...



Selecting the correct inverter

Inverter basics For inverter novices, an inverter converts your vehicle's, van's or camper's 12-volt, direct-current power to household-style, 240-volt, alternating ...

What Size Inverter for 100Ah Battery

? Free Diagrams: <https://cleversolarpower.com/free-diagrams/> ? My Best-Selling book on Amazon: <https://cleversolarpower.com/off-grid-solar-power-simplified>



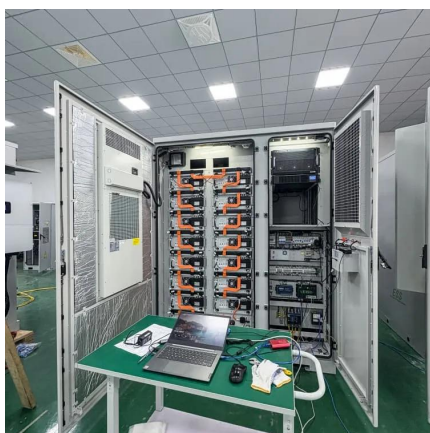
How Many Batteries Can Be Connected to a 12V Inverter?

The number of batteries you can connect to an inverter cannot exceed 12 times the charging current of the inverter. For example, a 20A charger can handle a maximum of ...



Understanding Battery Capacity and Inverter Compatibility

A 500VA inverter would be suitable, offering a balance between performance and battery life. For extended run times, consider larger inverters or additional batteries to meet ...



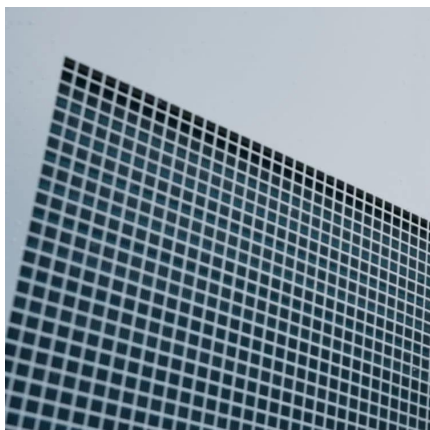
[Lithium Batteries: What Size Inverter Can I Use?](#)

When calculating the amp usage of an inverter, you take the output wattage of the inverter and divide it by the battery voltage, i.e. $1000W \div 12V = 83.33$ Amps. ...

[How Many Solar Panels For Inverter Battery Charge](#)

Renewable energy from solar panels can charge up your inverter batteries. The right number of solar panels maintain the charge of inverter batteries.





How Many Batteries can Be Connected To An Inverter?

The number of batteries you can connect to an inverter cannot be more than 12 times the inverter charging current. A 20A charger can handle 240ah battery maximum.

Can You Mix Different Capacity Lithium Batteries?

Yes, you can mix different capacity lithium batteries, whether a normal 12V 100Ah battery or a Lithium server rack battery.



How Long Will a Deep-Cycle Battery Power a TV

A 100 ampere-hour deep-cycle battery with a power inverter can power a 32" LED TV at 35 watts for 34 hours, or a smaller 20-watt TV for about 60 hours until the battery is fully discharged.

How long will a 12 volt battery run a 120 watt inverter?

In everyday life, many people use inverters to convert direct current (DC) from a 12 volt battery to alternating current (AC) to power ...



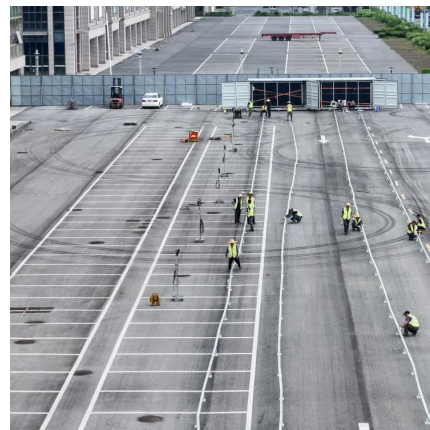
How Long Will a Deep Cycle Battery Power an Inverter?

When considering how long a deep cycle battery can power an inverter, several factors come into play, including the battery's capacity, the inverter's ...



[How Many Batteries Can Be Connected to a 12V ...](#)

How many batteries can be connected to the inverter? The number of batteries you can connect to an inverter cannot exceed 12 times the ...



[How Many Batteries Can Be Connected to a 12V ...](#)

The number of batteries you can connect to an inverter cannot exceed 12 times the charging current of the inverter. For example, a 20A ...





How to Calculate Battery Size for Inverters of Any Size

Learn how many batteries for a 3000-watt inverter or a 1kVA inverter and more, right here at The Inverter Store. In order to size a battery bank, we take the hours needed to continuously run ...

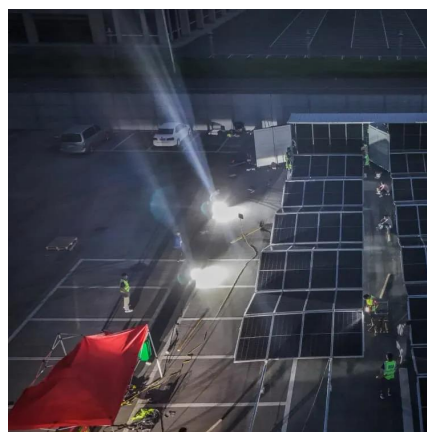


Calculate Battery Size For Any Size Inverter (Using Our Calculator)

Pairing a right size capacity battery for an inverter can be a bit confusing for most the beginners So I have made it easy for you, use the calculator below to calculate the battery ...

Connecting Lithium Batteries in Parallel: What You ...

This means two 12V 120Ah batteries wired in parallel will give you only 12V. But increases capacity to 240Ah. Connecting your lithium batteries ...



[Lithium Batteries: What Size Inverter Can I Use?](#)

When calculating the amp usage of an inverter, you take the output wattage of the inverter and divide it by the battery voltage, i.e. $1000W \div 12V = 83.33$ Amps. The other question we always ...



12V Battery Run Time Calculator

Need to know how long your 12V battery will last? This 12V Battery Run Time Calculator helps you estimate the run time for your battery ...

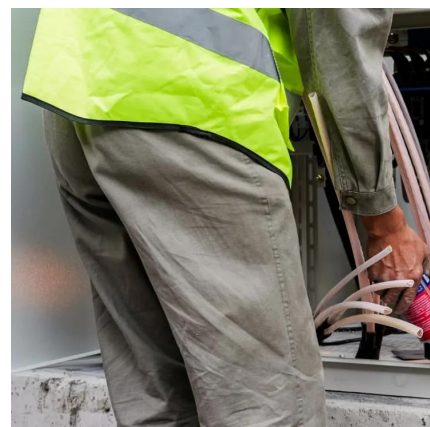


Battery Run Time Calculator

Calculate battery run time for 12V, 24V, and 48V batteries based on battery capacity & power consumption.

[Calculate Battery Size for Inverter Calculator](#)

Estimate the battery capacity required for your inverter based on power load, runtime, and efficiency. Using the Calculate Battery Size for Inverter Calculator can ...





Contact Us

For catalog requests, pricing, or partnerships, please visit:
<https://www.talbert.co.za>