

How many hours can a battery inverter last





Overview

How long does a 24V inverter last?

An inverter draws its power from the battery so the battery capacity and power load determines how long the inverter will last. Regardless of the size, the calculation steps are always the same. Using this calculation, a 24V inverter with a 100ah battery and 93% efficiency can run a 500W load for 2.3 hours.

How long can an inverter supply power?

The duration it can supply power depends on three key factors: Battery Capacity (Ah): The amount of energy stored in the battery. Inverter Efficiency (%): How effectively the inverter converts DC to AC power. Load Power (W): The total wattage consumed by connected devices. This knowledge is crucial for:.

Does an inverter use time?

Inverter Usage Time Calculator - Yes! Calculator Understanding how long your inverter will last is essential for efficient energy management and backup power planning. This guide explores the science behind inverter usage time, providing practical formulas and expert tips to help you maximize your system's performance.

How long can a 200Ah battery run a 1kW inverter?

Battery Running Time = (Battery Power Capacity (Wh) / Inverter Power (W)) x Inverter Efficiency %
Battery Running Time = (1200 Wh / 1000 W) x 95%
Battery Running Time = 1.14 Hours or 1 Hour and 8 Minutes
So, a 200Ah 12V lead acid battery with 50% DOD could power a 1kW inverter with 95% efficiency at maximum load for 1 Hour and 8 Minutes.

How long can a 24V inverter run a 500W load?

Using this calculation, a 24V inverter with a 100ah battery and 93% efficiency



can run a 500W load for 2.3 hours. You have a 24V inverter with a 150ah deep cycle battery. The inverter is 93% efficient. You want to run a 700 watt load, so how long can the inverter run this?

The inverter can run a 700 watt load for 2.4 hours.

How long can a refrigerator inverter run out of power?

Practical Impact: The inverter can support your home for nearly 3 hours during a power outage. Scenario: Running a 150 W refrigerator with a 100 Ah battery and 80% efficient inverter. Practical Impact: You'll need multiple cycles or additional solar panels to sustain longer operation. Q1: What happens if my inverter runs out of power?



How many hours can a battery inverter last



[How long will a 12v battery last with inverter](#)

How long will a 12v battery last with an inverter? Here is a completed explication on the factors that affect the run time of 12v battery and the calculation formula.

What is the 150ah Battery Backup Time? Here's How ...

However, you can also calculate the accurate 15Ah battery backup time with the formula below. Backup Time (hours) = Battery Capacity (Ah) * Input voltage ...



[How Long Can An Inverter Battery Last In Nigeria](#)

How many years can an inverter battery last? How many hours can an inverter battery last? These questions are commonly asked by people ...

Career Compass

Generated by Firebase StudioAnswer a few questions to find career paths that match your interests, skills, and values.



How Long Will a Battery Last With an Inverter? (Calculator)

One of the most common concerns that irritate solar power system owners is the battery running duration. This is very important since it tells you how much time your inverter ...



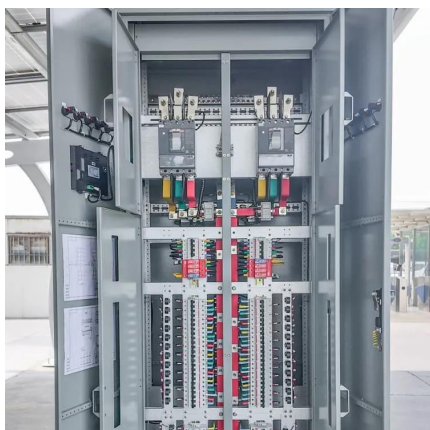
HOW LONG DOES A SUMP PUMP BATTERY BACKUP LAST?

There are many variables that determine how long battery backup can be maintained. An inverter-powered battery backup will provide AC power to a conventional ...



How Long Will a 12V Battery Last With An Inverter

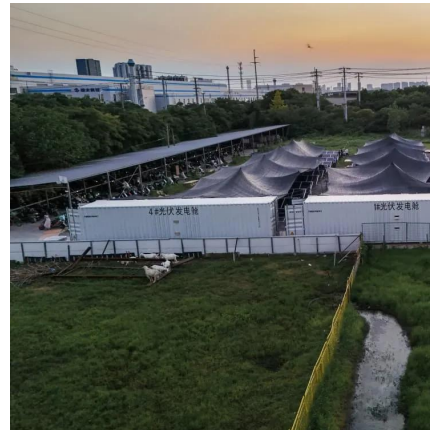
Understanding how long a 12V battery will last with an inverter is crucial for effective power management. The battery's amp-hour (Ah) rating and the inverter's wattage ...





Battery Runtime Calculator

How long will your battery last? find out with our easy-to-use battery runtime calculator. Calculator Assumptions This calculator will consider the efficiency ...



How Long Will 100ah Battery REALLY Last? (Explained!)

How long will a 100ah battery run an appliance that requires 100w? 12v 100ah lead-acid battery will run an appliance that requires 100w for about ...

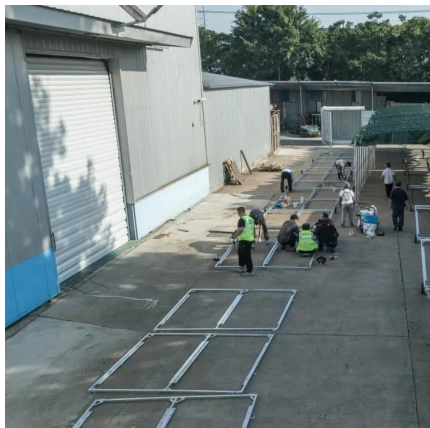
Inverter Usage Time Calculator

Understanding how long your inverter will last is essential for efficient energy management and backup power planning. This guide explores the science behind inverter ...



How Long Will A 12v Battery Last With An Inverter? Calculator

How many hours can a 12 volt battery run an inverter? As a simple rule, to calculate how long a 12v deep-cycle battery will last with an inverter multiply battery amp-hours (Ah) by ...



How Long Will a 12V Battery Last With An Inverter

Understanding how long a 12V battery will last with an inverter is crucial for effective power management. The battery's amp-hour (Ah) rating ...

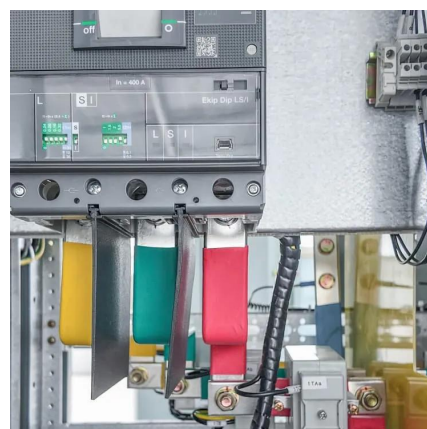


How do you calculate how long a battery will last on an inverter?

To determine how long your battery will last, calculate the battery's total capacity and divide it by your circuit's power. Multiply the battery's reserve capacity by 60. With a reserve capacity, for ...

How Long Will a Battery Power an Inverter?

In this article, you'll get simple information for you to understand how long a battery will power an inverter. So let's dig in. The length of time your battery will last on an inverter depends on how ...





[How Long Can a 100ah Battery Run an Inverter?](#)

Before diving into how long a 100Ah battery can power an inverter, it's crucial to understand the basic components involved. This chapter lays the foundation, introducing key concepts like ...

How Long Can 12V Battery Last With Inverter? Free Calculator

In general, the run duration of a 12V deep-cycle battery when connected to an inverter may be calculated by multiplying the battery's amp-hours (Ah) by 12 and then dividing ...



How Long Can I Run The Power Inverter On My Battery?

Handy calculation: how many hours can your device last? To calculate how many hours a device can run on combined inverter and Battery Bank power, we can use a simple ...

[How Long Will a Battery Power an Inverter?](#)

In this article, you'll get simple information for you to understand how long a battery will power an inverter. So let's dig in. The length of time your battery ...

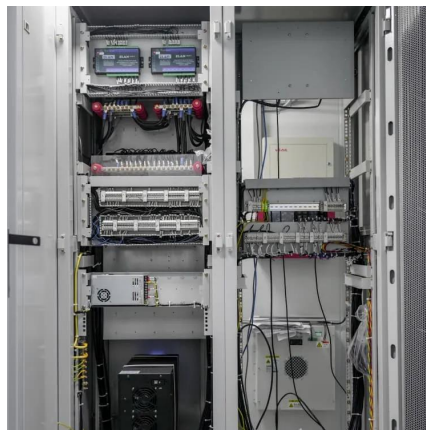


How Long Will 12v Battery Run a Refrigerator? + Calculator

Factors That Will Affect The Battery Runtime
These are the main factors that will determine the battery runtime on a fridge or refrigerator
Battery Capacity Wattage ...

How Long Can I Run The Power Inverter On My Battery?

Handy calculation: how many hours can your device last? To calculate how many hours a device can run on combined inverter and Battery ...



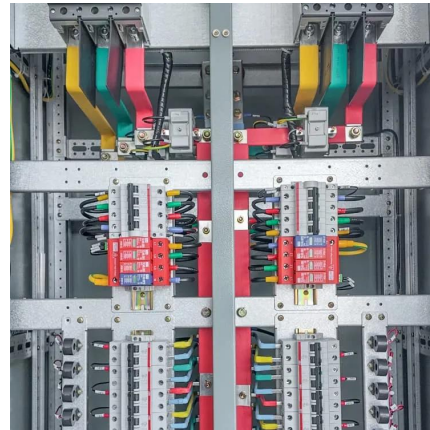
[12 Volt Battery Run Time Calculator](#)

Do you have a 12v device you need to power but don't know what 12-volt battery you need? For those running a continuous 12-volt load, an adequately sized deep-cycle ...



Battery Run Time Calculator

Explanation: Battery Capacity in mAh: The total charge the battery can hold, measured in milliampere-hours (mAh). Battery Voltage in V: The ...

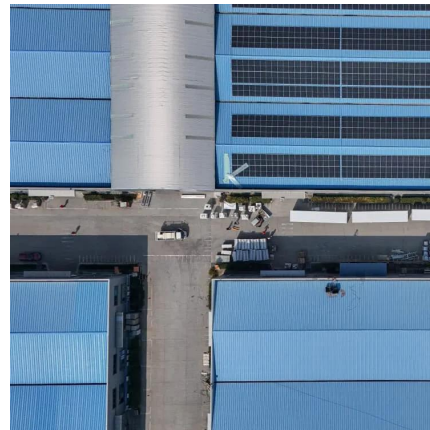


Inverter Battery: How Many Hours Does It Last During Power ...

An inverter battery typically lasts 5 to 10 hours when fully charged. The backup time varies based on power consumption, total load power, and battery capacity. For optimal ...

What Will An Inverter Run & For How Long? (With Calculator)

So I'm gonna explain to you guys in simple words about what you can run on your any size inverter and what are the key point to keep in mind. And also how long your inverter ...



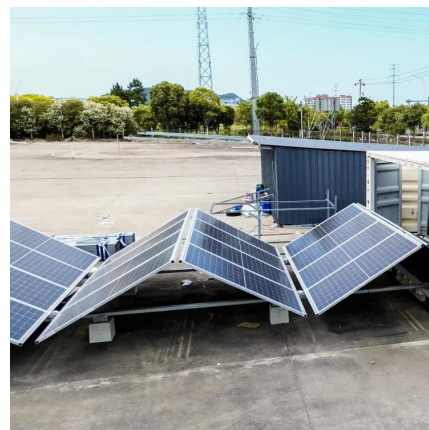
How Long Will Battery Last With 1000W Inverter: Key Factors

A 12-volt, 100Ah battery can run a 1000-watt inverter for about 1 hour and 6 minutes. A 12V, 200Ah battery may last around 2 hours and 12 minutes. Battery life depends ...



What Will An Inverter Run & For How Long? (With Calculator)

How many hours can a 12 volt battery run an inverter? As a simple rule, to calculate how long a 12v deep-cycle battery will last with an inverter multiply battery amp-hours (Ah) by ...



[How Long Will a Battery Power an Inverter?](#)

Calculating How Long a Battery Will Run an Inverter The length of time your battery will last on an inverter depends on how much energy you are using. It ...

[How to Calculate How Long an Inverter Will Last](#)

How long an inverter lasts depends on the battery and load. This simple guide explains how to calculate inverter runtime of any size.





Contact Us

For catalog requests, pricing, or partnerships, please visit:
<https://www.talbert.co.za>