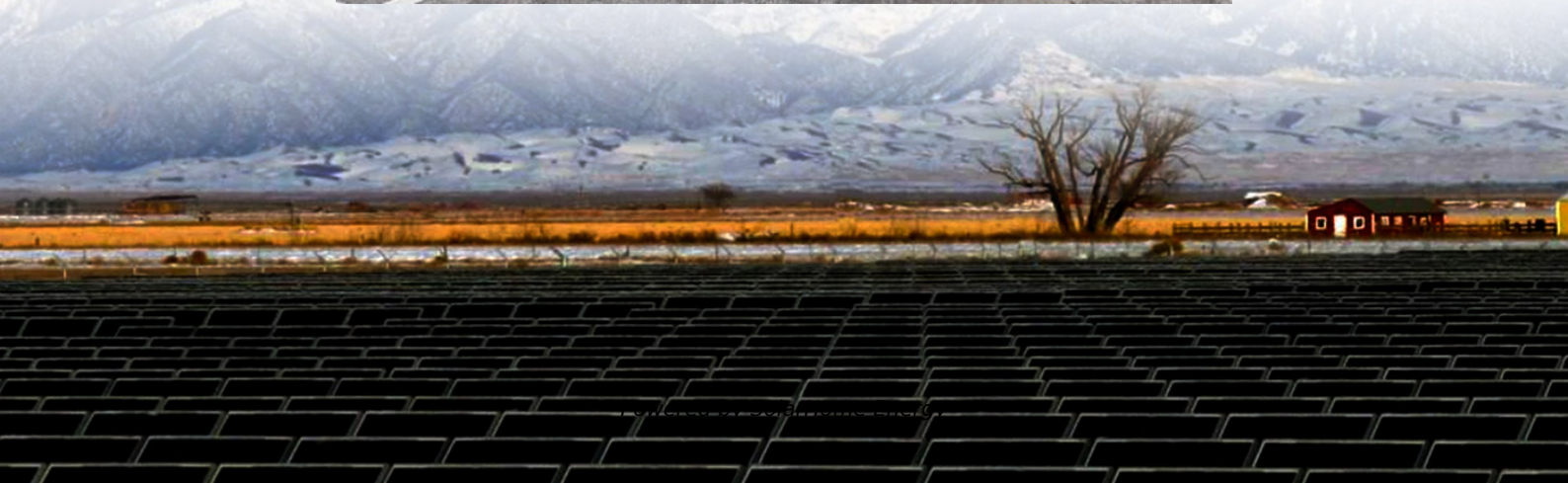
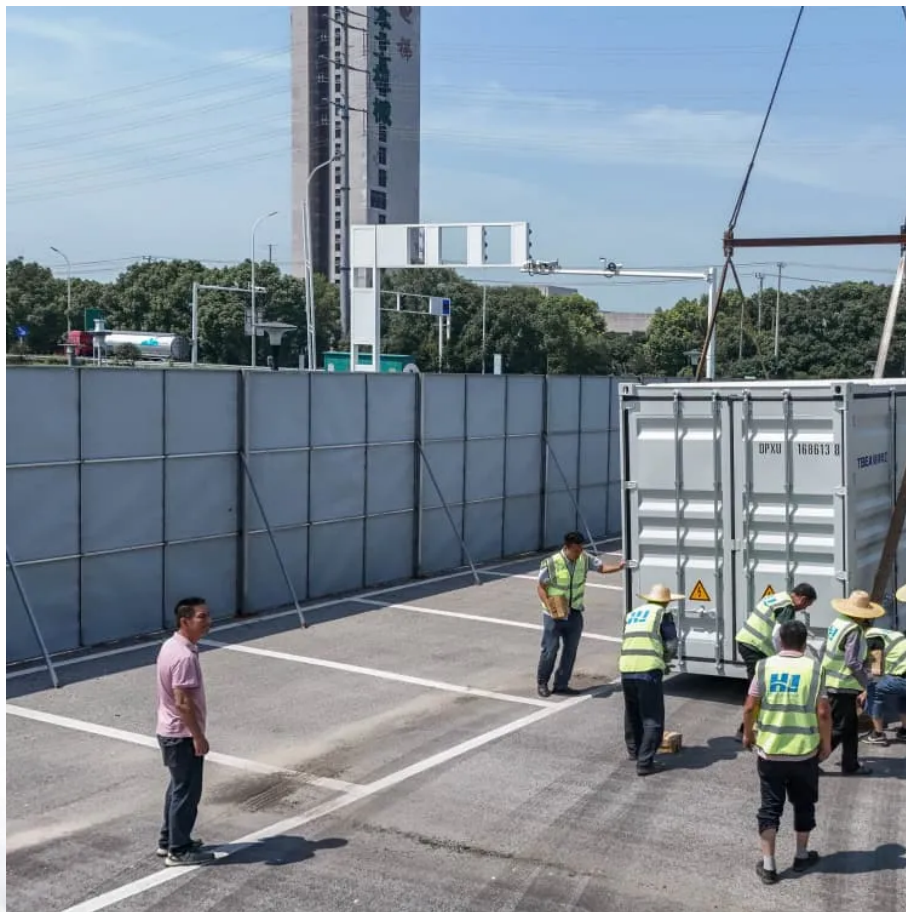


# **How many batteries should I string together for a 3kw inverter**





## Overview

---

You need 4 Lithium batteries in series to run a 3,000W inverter. If you use lead-acid batteries, you need 12 batteries with 4 in series and 3 strings in parallel.

The C-rate of a battery is the rate at which the battery can deliver the promised capacity of a battery. For example, the C-rate of a 100Ah lead.

The second point is the current drawn from the battery to the inverter. We do not want to draw lots of current from the battery to the inverter. If we do, we need big and heavy cables. Big.

We know that we need to have a battery that has enough capacity to satisfy the c-rate and we need to have a 48V battery.

Can you run a 3000 watt inverter on one battery?

You need 4 Lithium batteries in series to run a 3,000W inverter. If you use lead-acid batteries, you need 12 batteries with 4 in series and 3 strings in parallel.  
Can I run a 3000 watt inverter on one battery?

You can but it's not recommended because you will reduce the battery lifespan, or the BMS will stop the discharge.

How many batteries do you need for a 3,000w inverter?

If we put 4 batteries in series we have one 48V 100Ah battery. The c-rate of lead-acid is 0.2C. We can draw  $100\text{Ah} \times 0.2\text{C} = 20\text{Amps}$ . That's not enough to power the 3,000W inverter. We saw previously that we need 62,5A if we have a 48V system. That means we need three parallel strings of 4 batteries in series for a total 12 batteries.

How long can a 3000 watt inverter run?

Let's say you have a 300Ah battery.  $300 \div 250 = 1.2$  hours. Drawing 3000 watts from a 300Ah battery will run for a maximum of 1.2 hours. If you reduce your power draw to 2000 watts, you would increase your runtime to nearly 2 hours! Remember, a 3000W inverter won't always draw maximum power, it depends what appliances you are running.



What size wire do I need for a 3000 watt inverter?

In this case, you need to make sure you have the right size AWG cables. The most common size cable for a 3000 watt inverter is 4/0 AWG. It is not a set rule as the gauge of wire changes depending on length. To be honest, 3000 Watt inverters are pretty big so you will need a minimum of 300Ah battery capacity in my experience.

How many watts can a 3000-watt inverter handle?

The maximum load a 3000-watt inverter can handle depends on the specific inverter and the manufacturer's specifications. Typically, a 3000-watt inverter can handle a peak load of around 6000 watts. However, it's best to consult the manual for specific details. What kind of batteries can be used with a 3000-watt inverter?

.

What type of battery for a 3000W inverter?

Inverter operating voltage (12V, 24V. ) To start with the 3000W inverter, it will most likely be a 24V. And regarding the battery capacity, we need to look for availability in your local market. In our case, and with this high amount of power needed to be stored (23,160 Wh), we will choose 200Ah 24V batteries.



## How many batteries should I string together for a 3kw inverter

---

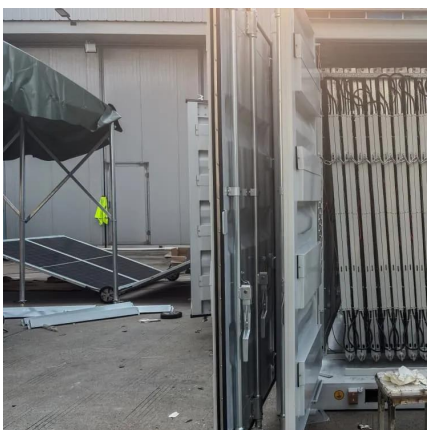


### How many batteries do I need for a 3000 watt inverter?

To determine the appropriate size of an inverter for your needs, consider both continuous load requirements - referring to the devices you plan on running simultaneously - as well as peak ...

### How many batteries should I get for a 2,000 watt power inverter

How many batteries should I get for a 2,000 watt power inverter? Hi guys, I'm planning to use a power inverter to run a few things on my food trailer and wanted to see if I could get your guys' ...



### How Many Batteries for 3000w Inverter and What Will ...

This post explores how many batteries and solar panels for a 3000W inverter and outlines what can a 3kw inverter run in different solar setups.

### How many batteries do you need for your 3000 Watt Inverter?

Find out how many batteries you need for your 3000 Watt inverter. Learn about power





requirements, battery types, and maintenance.



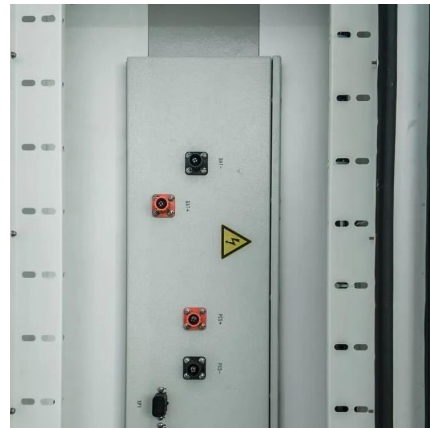
## Batteries for a 3000 Watt Inverter: A Complete Guide

Drawing 3000 watts from a 300Ah battery will run for a maximum of 1.2 hours. If you reduce your power draw to 2000 watts, you would increase your runtime ...



## [How Many Batteries for a 3000 Watt Inverter?](#)

Learn how to correctly calculate the number of batteries needed for a 3000-watt inverter and ensure optimal performance and longevity.



## Calculate Battery Size For Any Size Inverter (Using Our Calculator)

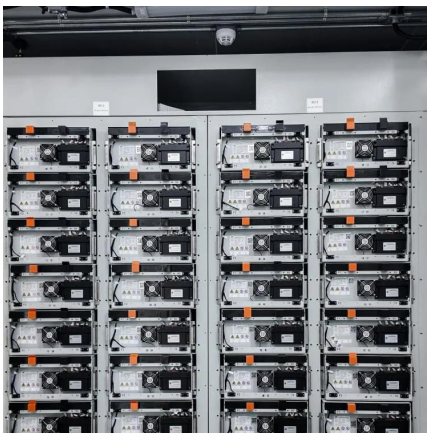
Pairing a right size capacity battery for an inverter can be a bit confusing for most the beginners So I have made it easy for you, use the calculator below to calculate the battery ...





## Connecting two Growatt hybrid inverters in a UK single phased ...

I've seen my inverter do just over 6KW continuously however on battery (which are 2 x Dyness B51100 in parallel so 48V 200AH total)) max discharge from each battery is 50A ...



## [Complete Guide to Inverter Batteries - NPP POWER](#)

What exactly is an inverter battery? Inverter batteries perform several critical functions: Energy Storage They store electrical energy for future use, offering backup power ...

## solar power

Rather than a using a single 6000W inverter and only drawing enough power for lights, laptop, and refrigerator 90% of the time, I was wondering if I could, instead, use multiple ...



## How Many Solar Batteries Are Needed to Power a ...

This article explores how many solar batteries are needed to power a house and how to calculate the answer based on your unique energy ...



### Sizing for EG4 3kw Hybrid Inverter : r/OffGrid

I'm running an entire house, with modern appliances, well pump, computers, etc on 8 similar panels, with a 4kW inverter, however I have 1,120Ah of battery. However, let's use kWh ...

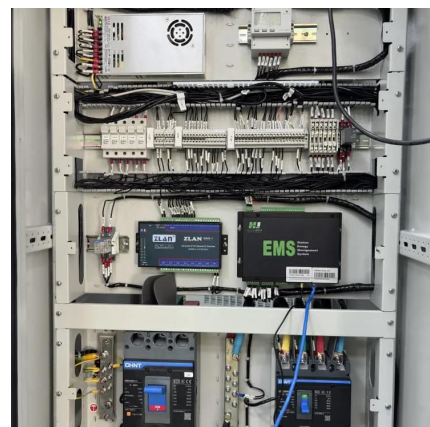


### **What Will An Inverter Run & For How Long? (With ...**

I saw on many forums that most people are confused about what they can run on their 1000,1500,2000,3000, & 5000-watt inverter and how long ...

### **How Many Batteries for a 3000 watt Inverter? [Diagrams]**

You need 4 Lithium batteries in series to run a 3,000W inverter. If you use lead-acid batteries, you need 12 batteries with 4 in series and 3 strings in parallel.





## How Many Batteries Do You Need for a 3000 Watt Inverter?

Determining the number of batteries required for a 3000 watt inverter involves several key considerations, including energy consumption, battery voltage, and desired runtime.

### How Many Batteries for a 3kVA Inverter?

To power a 3kVA inverter efficiently, the number of batteries you need depends on two key factors: the battery voltage and the energy storage capacity you want.



## How Many Batteries For A 3000-Watt Inverter? Free Calculator

The number of batteries required to power a 3000-watt inverter depends on the ampere-hour (Ah) rating of the batteries. If you have batteries with a 50Ah rating, you would ...

### How Many Batteries for a 3kVA Inverter?

To power a 3kVA inverter efficiently, the number of batteries you need depends on two key factors: the battery voltage and the energy storage capacity you want. Most 3kVA ...





### [3KW, 6KW, 8KW, and Beyond: Choosing the Right ...](#)

Choose the perfect hybrid inverter--3KW, 6KW, 8KW, or higher--for your energy needs. Compare features, efficiency, and scalability in ...



### **How Many Batteries for 3000w Inverter and What Will it Run**

This post explores how many batteries and solar panels for a 3000W inverter and outlines what can a 3kw inverter run in different solar setups.



### **Batteries for a 3000 Watt Inverter: A Complete Guide**

Drawing 3000 watts from a 300Ah battery will run for a maximum of 1.2 hours. If you reduce your power draw to 2000 watts, you would increase your runtime to nearly 2 hours! Remember, a ...





## Solar hybrid inverter

I have recently started looking into getting quotes for a solar + battery installation and been recommended 10x425W panels giving 4.25kWp (south facing). The installer ...



## [How Many Panels Can I Put on My Inverter?](#)

If you're wondering how many solar panels you can put on your inverter, the answer is: it depends. The capacity of an inverter is measured in kilowatts (kW), and most ...

## [How Many Batteries Do I Need for My Inverter?](#)

How many batteries do I need for my inverter? The calculation for figuring out how many batteries you need for your inverter is (Total Hours Needed ...



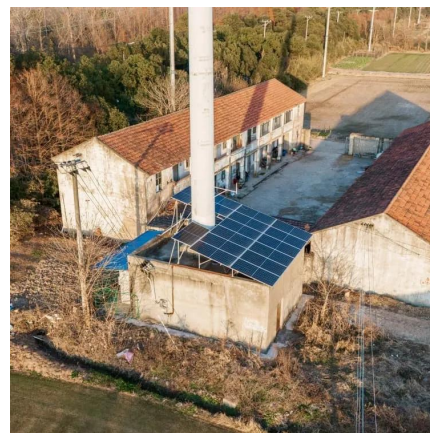
## How Many Batteries is Needed for 3000 Watt Power Inverter

Choosing the right number of batteries for a 3000-watt power inverter can be overwhelming without a basic understanding of the power requirements. The inverter's ...



## Ultimate Guide to the 3kW LF Inverter: Power, Battery Sizing, ...

If you have a 12V system and want a higher voltage and more power, then you may need to string four 12V, 100Ah batteries together so that the voltage becomes 24V and the ...



## Contact Us

---

For catalog requests, pricing, or partnerships, please visit:  
<https://www.talbert.co.za>