

How long does it take to fully charge a lithium battery with a 48150w energy storage





Overview

Here are the methods to calculate lithium (LiFePO₄) battery charge time with solar and battery charger.

Note: The charging time will be mentioned in peak sun hours. [Click here to read more about peak sun hours.](#)

Note: If the battery capacity is mentioned in watt-hours (Wh) or kilowatt-hours (kWh), follow the below steps. 1. For watt-hours (Wh): If the.

Calculating the battery's exact charge time is not an easy task. However, you can use our above lithium battery charge time calculators or formulas to get an estimated battery charge time. There are many real-life factors that will affect the battery charge time, and it is.

Final Result: Approximately 6.3 hours to full charge Always match charger output to battery specs. Underpowered chargers increase charge time significantly. Keep lithium-ion batteries between 20–80% for optimal health and efficiency. Avoid charging when the battery is below 0°C or above 45°C. What is a lithium battery charge time calculator?

A lithium battery charge time calculator is a specialized tool designed to help users estimate and plan their battery charging duration accurately. This calculator takes into account multiple factors that affect charging time and provides detailed insights into the charging process. Key Functions: The calculator is particularly useful for:.

What is battery charging time?

Battery charging time is the amount of time it takes to fully charge a battery from its current charge level to 100%. This depends on several factors such as the battery's capacity, the charger's voltage output, and the battery charge level. The basic formula used in our calculator is: $\text{Charging Time} = \frac{\text{Battery Capacity (Ah)}}{\text{Charger Current (A)}}$.

How long does it take to charge a lithium battery?

How long it takes to charge a lithium battery can change a lot. The charging



time depends on the battery's size, how you charge it, and the current used. A typical lithium-ion battery of about 3000 mAh might take 2 to 4 hours to fully charge with a standard USB charger. But, some big batteries or those charged quickly might be ready in just 1 hour.

How do I calculate battery charge time?

You can calculate the charging time by entering the battery capacity, charger output current, and battery charge level into the calculator. The result will show the estimated time required to charge your battery fully. What units can I use for battery capacity?

.

How long does a 10A Charger take to charge a lithium battery?

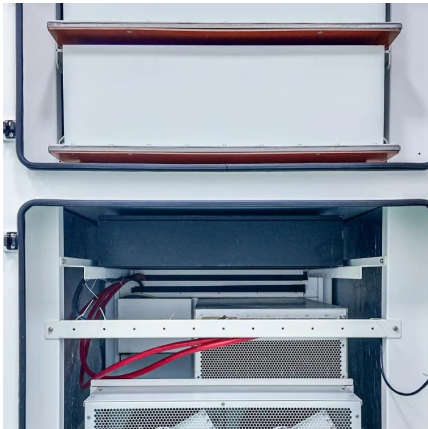
However, if the output value of the charger is mentioned in watts (W) or watt-hours (Wh), enter the battery capacity in watt-hours (Wh). Let's suppose 100Ah lithium battery will take about 10.5 hours to get fully charged from 100% depth of discharge (0% SoC) using a 10A charger.

How to charge a lithium ion battery?

Charging speed: Faster charging is possible but can be risky. Temperature: The best charging temperature is between 15°C to 35°C (59°F to 95°F). when to recharge lithium batteries: Recharge when the battery is 20-30% full to extend its life. Knowing about lithium ion battery charging characteristics helps with safe and efficient charging.



How long does it take to fully charge a lithium battery with a 48150



Lithium (LiFePO4) Battery Charge Time Calculator & Formula

A 12v lithium battery will take anywhere between 5 - 20 hours to get fully charged. Note: If the battery capacity is mentioned in watt-hours (Wh) or kilowatt-hours (kWh), follow ...

[48V Battery Guide: Charging, Safety and More](#)

Your comprehensive resource on 48V lithium batteries - from charging instructions to safe handling and maintenance.



How to Charge a LiFePO4 Battery

Learn how to charge a LiFePO4 battery for optimal performance and longer life. Avoid mistakes and use the right charger for safe, reliable power.

Do I Need to Fully Charge a Lithium Ion Battery ...

To charge your lithium-ion battery, simply connect it to the charger and plug it into an



outlet. The process can take several hours, so it's best to ...



Debunking Lithium-Ion Battery Charging Myths: Best ...

Explore the truth behind common lithium-ion battery charging myths with our comprehensive guide. Learn the best practices to enhance your battery's ...

Battery Charge Time Calculator , How Long to Fully Charge a Battery

Apply the formula: $\text{Charge Time} = \frac{\text{Battery Capacity}}{\text{Charger Current}}$. Consider efficiency losses: Adjust the formula if necessary. Example 1: A 100Ah battery with a 20A ...



5 Easy Mistakes to Avoid When Charging Lithium-Ion ...

Source: Shutterstock Letting a lithium-ion battery go for long periods without charging may cause permanent damage. This is because excessively ...



Battery Charging Time Calculator

Charging Time = $1\text{Ah} / 1\text{A} = 1\text{ hour}$. In this example, it will take 1 hour to charge the battery from 50% to 100%. How do I calculate battery ...



[Lithium Ion Battery Charging Time Calculator](#)

To calculate the lithium-ion battery charging time, follow these steps: Find out the battery's capacity in mAh (milliamp-hours). Divide the battery capacity by the charging current ...

Battery Charge Time Calculator: Estimate Charging Time

Final Result: Approximately 6.3 hours to full charge. Always match charger output to battery specs. Underpowered chargers increase charge time significantly. Keep lithium-ion batteries ...



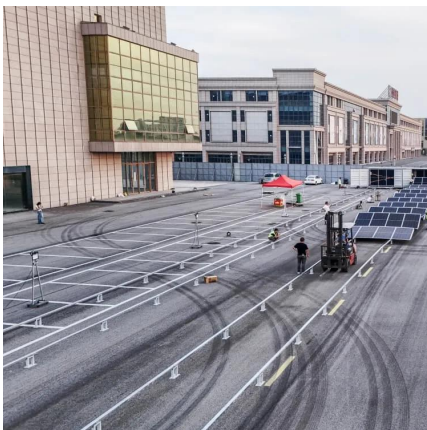
How Long Does It Actually Take to Fully Charge Lithium Batteries?

Discover how long lithium batteries take to charge with our detailed guide. Learn about charging times, factors that affect speed, and tips to optimize battery life. Get the most efficient charging ...



[Lithium Battery Charge Time Calculator](#)

Our Lithium Battery Charge Time Calculator helps you accurately estimate charging duration based on your battery specifications and charger ...



Battery Charge Time Calculator

Our intuitive battery charge time calculator will help you calculate battery charge time using the battery's capacity, and charging current. It provides accurate ...

[How Long Will A 100Ah Battery Last?](#)

Understanding Battery Capacity (Ah) To determine the battery's runtime, we first need to understand its capacity. Battery capacity refers to how much electrical charge the ...





How Long Should You Charge a Li Battery for the ...

Wondering how long to charge a lithium battery initially? Learn first-time charging tips, myths, and best practices for lithium battery care.

Charging a Lithium-Ion Battery: How Long It Takes, Tips, and ...

It typically takes about 1 to 4 hours to fully charge a lithium-ion battery, depending on the device and charger used. Most smartphones fully charge in approximately 1.5 to 2.5 ...



Battery Run Time Calculator

Calculate battery run time for 12V, 24V, and 48V batteries based on battery capacity & power consumption.

[How Long Does a Ring Battery Take to Charge?](#)

Charging a Ring battery typically takes 5 to 10 hours, depending on the model and power source. But why does it vary? Many assume all Ring devices charge at the same ...



Battery Charge Time Calculator?BSLBATT Lithium Battery Solution

BSLBATT specializes in high-performance lithium battery solutions that offer faster charging times, extended lifespan, and superior efficiency. Use our Battery Charge Time Calculator ...



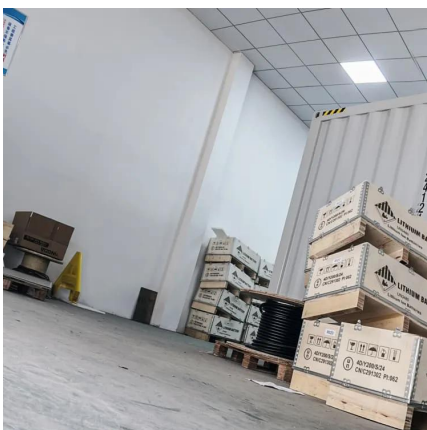
[Lithium Ion Battery Charging Time Calculator](#)

How long it takes to charge a lithium battery can change a lot. The charging time depends on the battery's size, how you charge it, and the current used. A typical lithium-ion ...



[Solar Panel Charging Time Calculator](#)

Similarly, with a 24V 100Ah battery, it would require 8 hours of solar panel operation to achieve a full charge. Also Read: How Long Do Solar ...





Do I Need to Fully Charge a Lithium Ion Battery Before Use? In ...

To charge your lithium-ion battery, simply connect it to the charger and plug it into an outlet. The process can take several hours, so it's best to do it overnight or while you're at ...



Battery Charge Time Calculator?BSLBATT Lithium ...

BSLBATT specializes in high-performance lithium battery solutions that offer faster charging times, extended lifespan, and superior efficiency. Use our ...

Battery Charging Time Calculator

Charging Time = $1\text{Ah} / 1\text{A} = 1\text{ hour}$. In this example, it will take 1 hour to charge the battery from 50% to 100%. How do I calculate battery charging time? You can calculate the ...



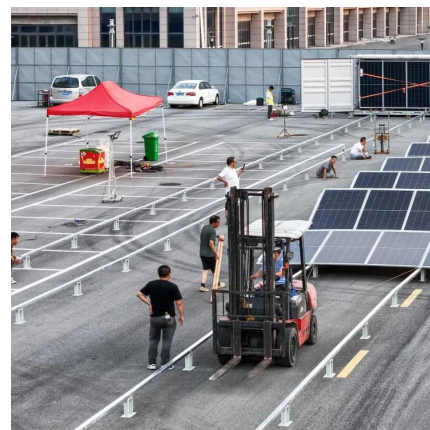
[How Long to Charge a 48V eBike Battery](#)

There explains how long it takes to charge a 48V eBike battery, covering factors like battery capacity and charger specs. It offers practical tips ...



Battery Charge Time Calculator , How Long to Fully ...

Apply the formula: Charge Time = Battery Capacity / Charger Current. Consider efficiency losses: Adjust the formula if necessary. Example ...



Battery Charging Time Calculator

This Calculator is designed to help you estimate how long it will take to charge a battery based on its capacity, charger current, and charge level.

How Long Does It Take to Charge an E-Bike Battery, What Is the ...

1 day ago · Part 1:How Long Does It Take to Charge an E-Bike Battery? 1.1 What Is an E-Bike Battery? An e-bike battery is the powerhouse of your electric bicycle. It supplies energy to the ...





[Lithium Battery Charge Time Calculator](#)

Our Lithium Battery Charge Time Calculator helps you accurately estimate charging duration based on your battery specifications and charger capabilities. Whether ...

Contact Us

For catalog requests, pricing, or partnerships, please visit:
<https://www.talbert.co.za>