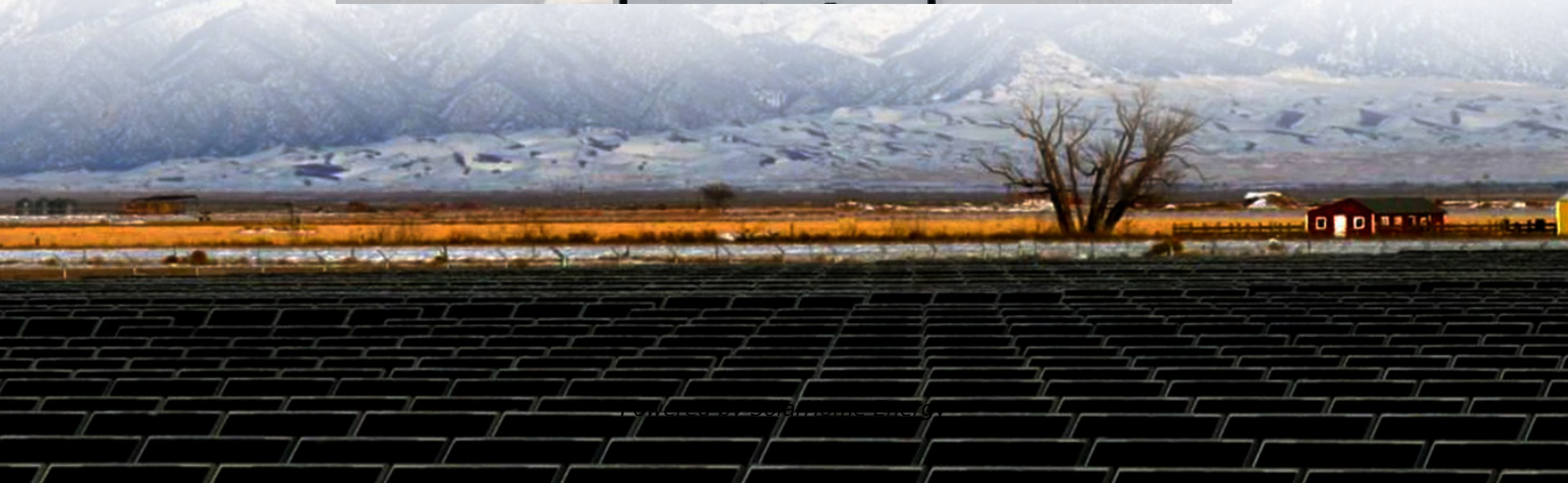


# **How long does it take to charge a 600w solar energy storage cabinet**





## Overview

---

Note: The estimated charge time of your battery will be given in peak sun hours. For more information on what peak sun hours are and how to calculate them, please refer to our in-depth guide.

To use the calculator, follow these steps: 1. Enter the total solar system size in watts: If you have multiple solar panels connected together, add their rated wattage and enter.

Dividing the battery amp-hours (Ah) by the solar panel's output amps (Ah ÷ charging amps) is the most inaccurate way to calculate the battery charge time. Instead, use this formula: .

Calculating the accurate charge time for a battery is a challenging task because there are numerous real-world factors that can impact it. Some of these factors include the state of charge of the battery, the absorption stage for lead acid and lithium batteries, solar panel.

Deep cycle or solar batteries are designed to charge and discharge at a specific rate, which is referred to as the c-rating. It's important to note the recommended charge time for.

If it's PWM then you'll probably only get 140w out of your panel under direct straight clean sun which would take about 4 hours. If it's MPPT you can probably do it in about 3 hours. If you're not getting great sun it'll take longer. How long to charge a 12V battery with 300W solar panels?

The duration to charge a 12V battery with 300W solar panels depends on the battery capacity and the solar panel current. For instance, at 6 peak hours and 25% system losses (efficiency is 75%), a single 300W solar panel can fully charge a 12V 50Ah battery in roughly 10 hours and 40 minutes. Let's understand it in detail.

How long does it take to charge a solar panel?

You are placing the charging battery solar panel set up under perfect sunlight conditions. Then via MPPT solar panel charge converter, it will hardly take 5-6 hours to charge the battery properly. Whereas under the same conditions, the



PWM charge controller would take 7-8 hours to charge the battery to its utmost level.

How long does a 200W solar panel take to charge?

Assume you are using a 200W solar panel and an MPPT charge controller. Solar output =  $200W \times 95\% = 190W$  4. Divide the discharged battery capacity by the solar output to get your estimated charge time. Charge time =  $960Wh \div 190W = 5.1$  hours.

How to calculate solar battery charge time?

Output power (W) = total watts (W) x conversion efficiency of the solar system x (1 - charge controller's power consumption rate) Substitute the data to get the output power of your solar panel is 1615W, and then finally divide the solar battery charge by the output power of the solar panel to get the charging time, i.e.:

How to charge a solar battery?

First of all, you need to start by converting the battery capacity of your solar battery from Ampere hours to Watt hours, ie: Watt-hours (Wh) = Amp-hours (Ah) x Voltage (V) Substituting the data gives you 960Wh for your solar battery. Then, you need to know how much you need to charge your solar battery, i.e.:

What is the capacity of a solar battery?

Solar battery Capacity (Ah) Each solar battery has a fixed battery capacity, such as common solar lithium batteries have 40Ah, 48Ah and 54Ah, etc. You can easily find the capacity of your solar battery from the instruction manual of the solar battery. 3. Rated voltage of solar battery (V)



## How long does it take to charge a 600w solar energy storage cabinet

---



### EcoFlow RIVER Portable Power Station

More compact models tend to have lower battery storage capacities. In addition, how long your portable power station lasts depends on its charge percentage ...

### **Solar Panel Charge Time Calculator For 12V Batteries ...**

Using this solar panel charge time calculator, we have calculated charging times for various sizes of batteries (with various solar panel sizes) at 6 peak hours.



### **How long does it take a solar panel to charge a generator?**

Conclusion Estimating how long a solar panel will take to charge a generator depends on multiple factors, including battery capacity, panel wattage, and environmental conditions. By using high ...

### Solar Panel Charging Time Calculator

Solar panel charging time calculators are powerful tools for accurately estimating the time needed to charge batteries using solar energy. ...





## How many hours does it take to fully charge a 600W power station?

If it's PWM then you'll probably only get 140w out of your panel under direct straight clean sun which would take about 4 hours. If it's MPPT you can probably do it in about ...

## [Solar Battery Charge Time Calculator](#)

Solar Battery Charge Time Calculator determines the time required to fully charge a solar battery based on various input parameters.



## [How Long do Portable Power Stations Last?](#)

However, this depends on what devices are being powered. How long does a 600W power station last? If fully charged, most 600W stations can ...



## [Lithium \(LiFePO4\) Battery Charge Time Calculator](#)

Use our lithium battery charge time calculator to find out how long it will take to charge a lithium battery with solar panels or with a battery ...



## Battery Charge Time Calculator

Calculate how long it will take your battery charger to charge your battery with our free battery charge time calculator.

## [Can too much battery capacity be a problem?](#)

LFP are far more flexible. Just don't exceed their rated charge current. 0.2-0.4C is typically a sweet spot. Your PV determines your daily energy usage. Your Battery determines ...



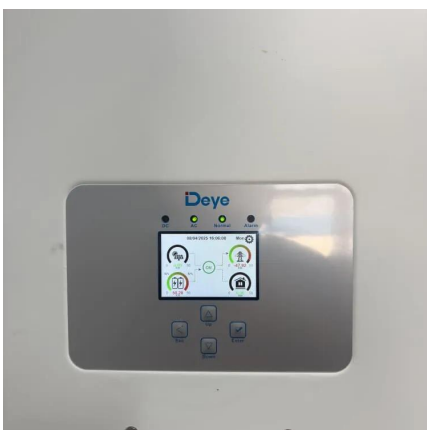
## [How Long Does It Take to Charge a 200ah Battery?](#)

A large solar array can probably charge the battery in an hour, but it would generate a lot of excess power. If you have a large battery bank or on the grid, this energy can be stored for ...



### What Size Solar Panel To Charge 100Ah Battery?

Alright, now you can fully see what size solar panel you need to charge a 100Ah 12V solar panel (be it lithium, deep cycle, or lead-acid). Example: If you want ...



### **Solar Sizing Calculations & Worksheet: Calculating ...**

Before we get into the calculations, let's talk about the capacity of a solar battery, whether it's a battery bank connected to solar panels or a ...

### Solar Panel Charge Time Calculator: Accurately ...

Whenever you need to calculate the charge time of your solar panel batteries, you can always turn to a solar panel charge time calculator. ...





## Solar Battery Charge Time Calculator (12v, 24v, 48v)

Use our solar battery charge time calculator to find out how long it will take to recharge your battery using solar panels.

## [How Many Batteries For a 600W Solar System?](#)

Here is a quick guide on roughly which batteries a 600W solar system can charge. This calculation assumes the system generates 3000 watts with 5 sunlight hours available.



## Solar Panel Charge Time Calculator

If you want to rely solely on formulas to calculate how long it takes to charge your solar batteries, it will not only take a lot of time and energy, but also difficult to guarantee the ...

## How long does it take for a solar battery to be fully charged?

Battery state of charge: If the battery is significantly depleted, it will take longer to reach full charge. Elaborating on these points, the overall charging duration for solar batteries ...





## How Many Hours Can Solar Batteries Work During ...

It will provide on-site investigation, design drawings, solar energy storage system solutions, transportation of goods, assist you to import solar energy storage ...



## [Your Solar Generator Cheat Sheet . 4Patriots](#)

Comes with a 100W folding solar panel. For everyday essentials & easy portability: The Patriot Power Solar Generator 1200 provides 1,200W continuous output with 1,030Wh ...



## [Solar Panel Charging Time Calculator](#)

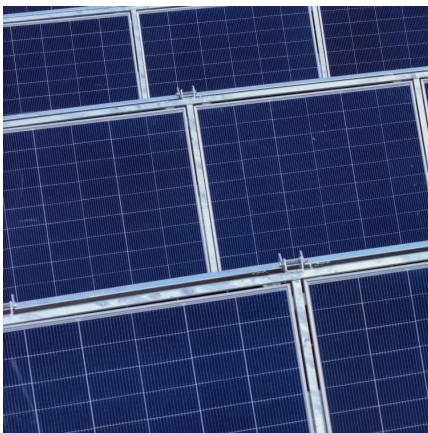
Solar panel charging time calculators are powerful tools for accurately estimating the time needed to charge batteries using solar energy. By inputting specific parameters, ...





## How Long Does It Take to Charge 12V Battery with 100W Solar ...

How Long Does It Take to Charge a 12V Battery with a 100 watt Solar Panel? Determining a specific amount of time to charge a 12V battery with a 100 watt solar panel can be tricky.



## How Long Solar Panel Charge Battery: Factors That Impact ...

Discover how long it takes for solar panels to charge a battery and maximize your solar investment. This comprehensive article explores the effects of panel type, environmental ...

## How long does it take for a solar battery to be fully ...

Battery state of charge: If the battery is significantly depleted, it will take longer to reach full charge. Elaborating on these points, the overall ...



## How Do Solar Panels Store Energy? A Step-by-Step Guide

As the global landscape transitions towards renewable energy, solar energy storage has emerged as a transformative solution for homeowners and businesses. ...



## How Much Solar Power to Charge a 600Ah Lithium Battery Bank ...

To calculate the solar power needed to charge a 600Ah lithium battery, you must consider the battery's capacity, the charging efficiency of the solar system, and the average ...



## Solar Panel Charge Time Calculator

If you want to rely solely on formulas to calculate how long it takes to charge your solar batteries, it will not only take a lot of time and energy, but ...

## Solar Panel Charge Time Calculator: Accurately Estimate How Long ...

Whenever you need to calculate the charge time of your solar panel batteries, you can always turn to a solar panel charge time calculator. The battery or energy storage ...





## Contact Us

---

For catalog requests, pricing, or partnerships, please visit:  
<https://www.talbert.co.za>