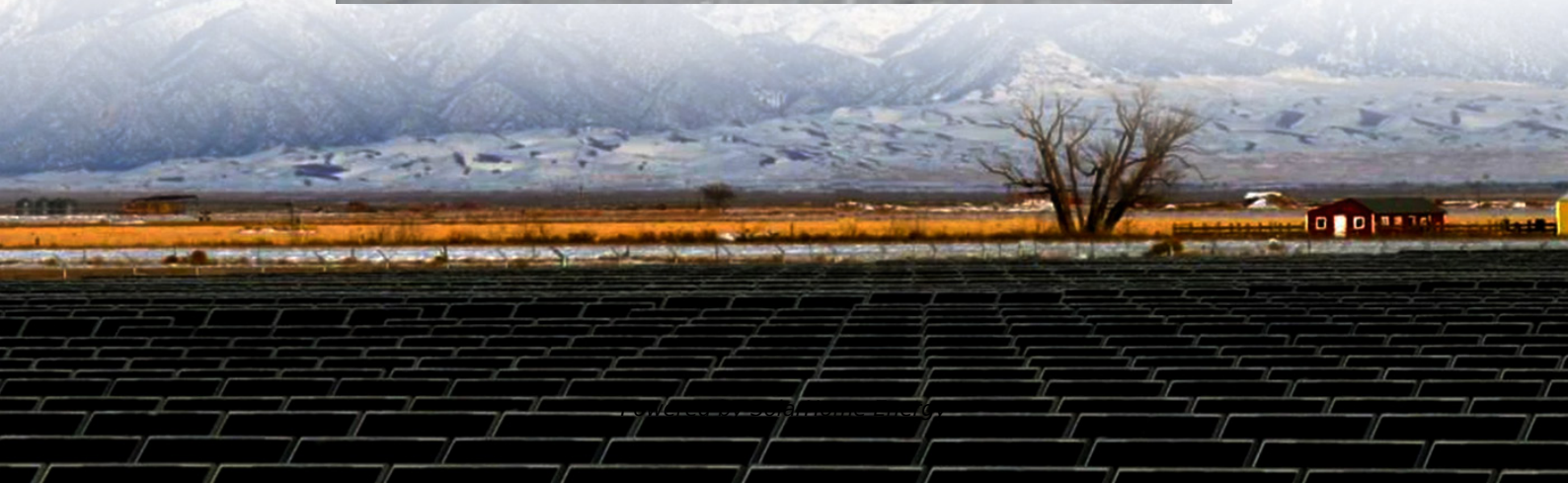


# **How long does it take for the inverter battery to be fully discharged**





## Overview

---

Alright, let's do a simple example to calculate the amount of time a battery will last when connected to an inverter. Say that we have a battery of 12 V with a capacity of 100 Ah and we are running an inverte.

How long does an inverter battery take to charge?

The cycle life is also impacted by discharge depth. Depending on the device and the power source, an inverter's battery will take a different amount of time to charge. Some batteries can be fully charged in as little as 1.5 hours. Some are even quicker or some batteries can take longer hours to charge.

How does depth of discharge affect battery life?

As stated above, cycle life decreases with increased Depth of Discharge (DOD). In fact, many inverters will shutdown when their batteries are being discharged below their depth of discharge because the batteries may be permanently damaged if fully discharged. Deep discharge inevitably lower the lifespan of a battery.

Do inverters need to be fully charged?

Batteries used in inverters are powered by chemical processes, and for these processes to take place, the battery must be completely charged. There won't be any problems here if the inverter is the proper size. Now you know how much you should charge your battery and what to do once it is done entirely.

How deep should a battery be discharged?

Most inverters and chargers do this automatically. Otherwise, users should not use a battery below its depth of discharge. Unless otherwise stated, the depth of discharge for most lead-acid batteries should never be less than 80%. As seen in the chart below, the number of cycles yielded by a battery increases as the depth of discharge decreases.

How to keep your inverter battery healthy and extend its life?

There are a couple of things you can perform to keep your inverter battery



healthy and extend its life when your inverter battery is completely charged:

1. The inverter must first be switched off. It can harm the battery if it's kept on because it will keep charging even after the battery is fully charged. 2.

How to install a battery inverter?

1. The inverter must first be switched off. It can harm the battery if it's kept on because it will keep charging even after the battery is fully charged. 2. Install power strips to connect your electronics and devices, and then connect the power strips to the inverter.



## How long does it take for the inverter battery to be fully discharged

---



### **Inverter Battery: How Many Hours Does It Last During Power ...**

An inverter battery typically lasts 5 to 10 hours when fully charged. The backup time varies based on power consumption, total load power, and battery capacity. For optimal ...

### **Battery Discharge: solar battery bank discharge explained**

Once the battery is 30% discharged, the discharge rate of the battery picks up sharply to a complete discharge. Solar battery discharge curve for a 24V lead acid battery



### **All You Need to Know About the Battery Life of Inverter Batteries**

Most inverters and chargers do this automatically. Otherwise, users should not use a battery below its depth of discharge. Unless otherwise stated, the depth of discharge for ...

### **How Long Will A Battery Power An Inverter? Key Factors For 12V ...**

By using these steps, you can estimate how long a battery will power your inverter effectively.





Always consider using a battery with a higher capacity to ensure a sufficient power ...

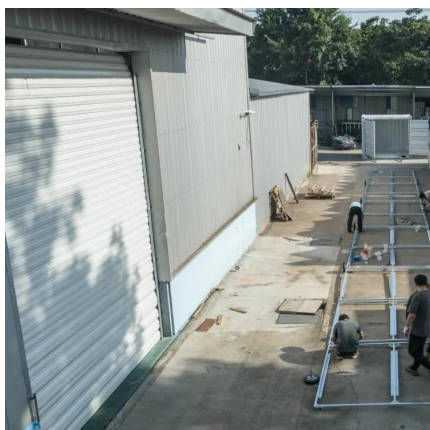


### [How Long Does it Takes to Charge a Dead Car ...](#)

The good news is that if it's a dead car battery, there are several options to charge it up again. We know time is of the essence, and you are ...

### **If Li-Ion battery is deeply discharged, is it harmful for it ...**

It is well known that Li-Ion batteries should not be deep discharged. But sometimes they do discharge deeply. Is it OK for the device to ...



### [Luminous Inverter battery is fully discharged](#)

Luminous Inverter battery is fully discharged at Others. -- Created at 15/06/2020, 39 Replies - Dost and Dimes -- India's Fastest growing Online Shopping Community to find ...



## What to Do When Your Inverter Battery is Fully Charged?

In this article, we will discuss the necessary steps to take when your inverter battery is fully charged, how to identify when it has reached maximum capacity and the estimated charging ...



## What Will An Inverter Run & For How Long? (With ...

So I'm gonna explain to you guys in simple words about what you can run on your any size inverter and what are the key point to keep in mind. ...

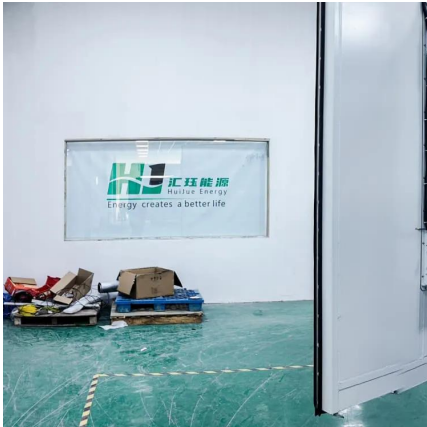
## What to Do When Inverter Battery is Fully Charged?

Depending on the device and the power source, an inverter's battery will take a different amount of time to charge. Some batteries can be fully charged in as little as 1.5 hours.



## What to Do When Inverter Battery is Fully Charged?

Depending on the device and the power source, an inverter's battery will take a different amount of time to charge. Some batteries can be ...



## Inverter Battery: How Many Hours Does It Last During Power ...

An inverter battery typically lasts 5 to 10 hours when fully charged. The backup time varies based on power consumption, total load power, and battery capacity.



## [How Long Does Battery Charging Take at AutoZone?](#)

Charging a car battery at AutoZone typically takes 30 minutes to 24 hours, depending on battery condition and charger type. But why such a wide range? Many assume a ...

## How do You Know if the Inverter Battery is Fully ...

Inverters can only work if the battery is charged. Learn different ways to check if the inverter is fully charged or not.







## What Will An Inverter Run & For How Long? (With Calculator)

So I'm gonna explain to you guys in simple words about what you can run on your any size inverter and what are the key point to keep in mind. And also how long your inverter ...

### [How long will a battery last with an inverter](#)

Yes and no, acutely the answer depends on the type of battery. If the battery is lithium (LiFePO4), you can expect it to last for one hour. If the ...



### [How Many Solar Panels Do You Need For a 300ah ...](#)

Battery capacity is measured in amp hours (ah) while solar panels use watts (w). To find out how long the battery will take to charge, you have to ...



## How Fast Will a Power Inverter Drain a Standard Battery?

Learn how to determine how fast a power inverter will drain your battery, and feel secure in using your devices.





### How Long Does An Inverter Take To Charge?

If the battery is completely discharged, it will take longer to charge compared to a partially discharged battery. This is because the charging process needs to replenish a higher ...



### **Fully Discharge Lithium Battery: Damage & Prevention**

Fully discharging lithium batteries to 0% causes permanent damage. Learn the risks and proper 20-80% charging rule for longer battery life.



### **How to Calculate the time of Charging and Discharging of battery?**

As the discharge rate ( Load) increases the battery capacity decreases. This is to say if you discharge in low current the battery will give you more capacity or longer discharge . ...





## How Long Does An Inverter Take To Charge?

Understanding Inverters: Before we dive into the charging process, it is important to understand the functioning of an inverter. In simple terms, an inverter converts the DC ...

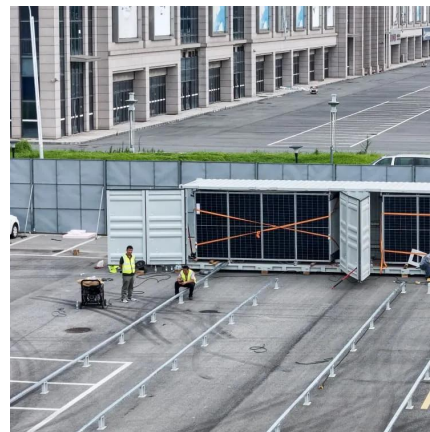


## Why Solar Battery Drains Fast and How to Avoid It

Fully discharged batteries that are not recharged after a long period results in sulfation. The sulfur molecules inside the battery get discharged and begin to cover the lead plates.

## **Inverter Battery: Can It Be Recharged? Explore Effective ...**

In summary, while inverter batteries often take about 8 to 12 hours to charge fully, this time can vary based on battery type, state of discharge, charger specifications, and ...



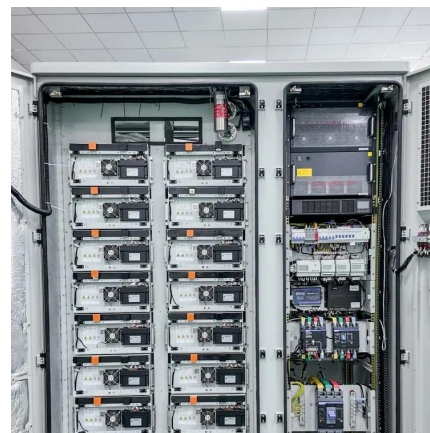
## How long will a battery last with an inverter

Yes and no, acutely the answer depends on the type of battery. If the battery is lithium (LiFePO4), you can expect it to last for one hour. If the battery is lead-acid, the battery ...



## How Long Will a Battery Last with an Inverter? Calculate Your ...

An inverter battery lasts about 5 to 10 hours when fully charged. The backup time depends on the battery capacity and the load, which is the total energy consumption.



## All You Need to Know About the Battery Life of ...

Most inverters and chargers do this automatically. Otherwise, users should not use a battery below its depth of discharge. Unless otherwise ...

## Contact Us

For catalog requests, pricing, or partnerships, please visit:  
<https://www.talbert.co.za>