

How long does it take for a battery cabinet to be fully charged before it can be used





Overview

Let the charger run until it shuts off automatically or until you reach the recommended charging time for your particular battery model – usually around 12 hours. Once it's done charging, disconnect everything and put away your tools. What is battery charging time?

Battery charging time is the amount of time it takes to fully charge a battery from its current charge level to 100%. This depends on several factors such as the battery's capacity, the charger's voltage output, and the battery charge level. The basic formula used in our calculator is: $\text{Charging Time} = \text{Battery Capacity (Ah)} / \text{Charger Current (A)}$.

How to calculate battery charge time?

While this battery charge time calculator formula is simple, it is the least accurate. Example: Suppose the battery capacity is 200Ah, and the charging current is 20 amps. In this case, the battery charge time will be: $\text{Charge Time} = 200\text{Ah} \div 20\text{A} = 10\text{H}$.

How long should a new battery stay charged without use?

It should be ok for several weeks, even 3 months or so. If your "luck" is like mine then you will only need the battery charger the one time you do not take it. So I recommend you take it along every time anyway, that way you will probably not need it. Re:.

How long does it take to charge a dead battery?

In other words, a dead battery means no charge is left to charge the appliances. Recharging a dead battery can take somewhere between 4 hours to 24 hours, depending on its type, size, etc. You can use the battery charge time calculator to find the time required to fully charge the dead battery.

How long should you charge a new lithium ion battery?

Overcharging can damage your battery and shorten its lifespan. As many of us



know, it is best practice to charge a new lithium-ion battery for 8 hours before using it. This allows the battery to reach its full capacity and ensures optimal performance. However, there are a few things to keep in mind when charging your new battery for the first time.

How long does it take to charge a rechargeable battery?

The time it takes for the rechargeable batteries to be fully charged depends on the type of charger. However, if you use a regular charger for your AA batteries, you can expect one battery to be fully charged in six hours. So, simultaneously charging two batteries takes 7–13 hours. Meanwhile, AAA batteries take up to 6–9 hours to be 100% full.



How long does it take for a battery cabinet to be fully charged befo



Dewalt Battery Charge Time Chart (An Ultimate Guide)

Leaving the battery in may result in overcharging, which can negatively impact the battery's health. How long your Dewalt battery would take to be charged depends on the ...

How long does it take to charge a power storage wall (powerwall)

It usually takes about 5 to 10 hours to fully charge a Powerwall battery from empty using regular home electricity supply. The exact time can vary based on how much power ...



How Do I Know When My Bluetooth Keyboard Is Fully Charged?

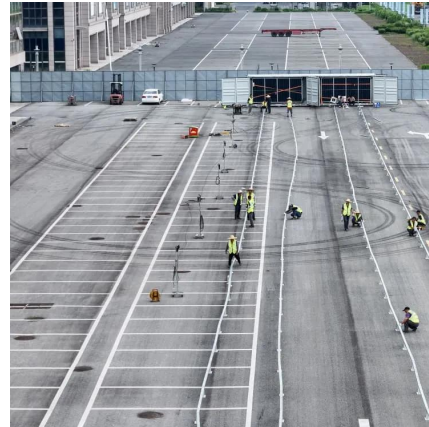
Understanding Bluetooth Keyboard Battery Indicators When using a Bluetooth keyboard, it's crucial to understand how its battery indicators work. These indicators give you ...

Best Practices for Charging, Maintaining, and Storing Lithium ...

Lithium-ion batteries can last anywhere from 300 to 15,000 full cycles, depending on various



factors such as battery chemistry and usage patterns. A full cycle involves charging the battery ...



Battery storage/charging best practices : r/egopowerplus

Page 56 of this Ego battery report says you can store them from -10C to 70C (14F to 158F). But we know that extreme temperatures degrade lithium ion batteries so keeping it at house ...

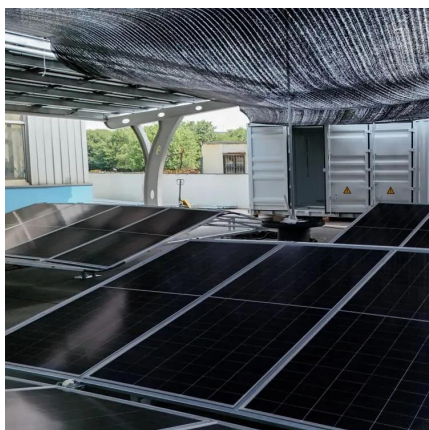
[When Should I Charge My Fitbit? Definitive Answer](#)

To extend the Fitbit's battery life, you should charge it to 100% before using it. Additionally, you can increase its battery life by minimizing the ...



How Long Do Rechargeable Batteries Take To Charge? , Battery ...

However, if you use a regular charger for your AA batteries, you can expect one battery to be fully charged in six hours. So, simultaneously charging two batteries takes 7-13 hours. Meanwhile, ...





How Long Does It Take To Charge A Car Battery?

Figuring out these factors beforehand can help you estimate how long it will take to get back on the road. For a fast, free battery test*, stop by ...

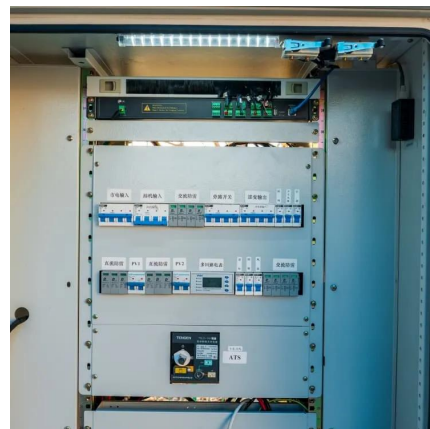


Does a New Car Battery Need to Be Charged? How ...

Lead-acid batteries, the most common type of car battery, need to be charged for 12 to 24 hours before they can be used. That's why lead-acid ...

How to Calculate Battery Charging Time

The battery charge time calculator lets you figure out the time required to fully power your battery. In this Jackery guide, we'll reveal four methods to calculate battery ...



Charging new device before first use

I can think of a couple of reasons: Calibrating the internal device battery indicator display. A full charge, and a full discharge, once-in-awhile is necessary for accuracy. Making sure it's safe. ...



Battery Charging Time Calculator

You can calculate the charging time by entering the battery capacity, charger output current, and battery charge level into the calculator. The result will show the estimated time ...



How long to leave a car running to charge the battery?

Battery type A lead-acid battery takes a long time to charge as it has a high capacity. So, you also need to consider the capacity of your battery ...

Power On: A Beginner's Guide to Charging Your Eufy Camera

Do you own an Eufy camera and want to know how to charge it properly? Whether you need to recharge your camera's battery or you simply want to make sure it's always fully ...





[Drone Battery Charging Time: How Long It Takes?](#)

In this article, we will discuss drone battery charging time: how long it takes to charge a drone battery, and the different factors that affect charging ...

[56v EGO battery charging best practices?](#)

The worst thing you can do is store a fully charged battery in a hot place for a long time. The best way to store a lithium battery is at a safe storage voltage in a cool place.



[Charging new device before first use](#)

I can think of a couple of reasons: Calibrating the internal device battery indicator display. A full charge, and a full discharge, once-in-awhile is necessary for accuracy. Making ...

The Ultimate Guide to Battery Charging Cabinets: Safe Storage ...

Discover the importance of battery charging cabinets for safe lithium-ion battery storage. Learn about key features, benefits, and best practices for workplace safety.



[How Long Does it Takes to Charge a Dead Car ...](#)

A linear battery charger can take up to twelve hours to fully recharge a 12-volt lead-acid battery. This charging option charges on a ...



The Ultimate Guide to Battery Charging Cabinets: ...

Discover the importance of battery charging cabinets for safe lithium-ion battery storage. Learn about key features, benefits, and best practices for workplace ...



Do I Need to Fully Charge a Lithium Ion Battery Before Use? In ...

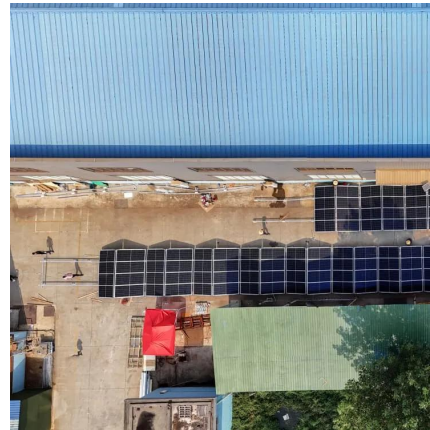
When you first get a lithium-ion battery, it is important to charge it fully. This will help ensure that the battery performs at its best from the start. However, after the initial charge, you ...





How Long Does A Robot Vacuum Take To Charge

How long does it take for a robot vacuum to fully charge? The charging time of a robot vacuum can vary depending on several factors, such ...



If I store it away without charging how long can it last for until it

If I store it away without charging how long can it last for until it needs a battery top up? This question is for all handhelds really Switch, psp, 3ds, 3ds XL, etc.. all of them ever ...

How Long Do I Charge My Vape? A Comprehensive Guide to Battery ...

Find out how long you should charge your vape, factors affecting charging times, and tips for prolonging battery life in this complete guide.



Battery Charging Time Calculator

You can calculate the charging time by entering the battery capacity, charger output current, and battery charge level into the calculator. ...



Dewalt Battery Charge Time Chart (An Ultimate Guide)

When you first get a lithium-ion battery, it is important to charge it fully. This will help ensure that the battery performs at its best from the start. ...

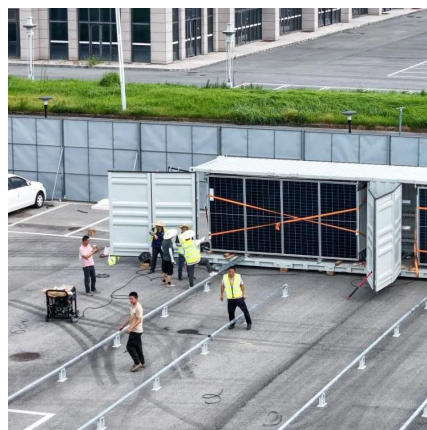


[How Long Do Rechargeable Batteries Take To ...](#)

However, if you use a regular charger for your AA batteries, you can expect one battery to be fully charged in six hours. So, simultaneously charging two ...

How long should a new battery stay charged without use?

It should be ok for several weeks, even 3 months or so. If your "luck" is like mine then you will only need the battery charger the one time you do not take it. So I recommend ...





Contact Us

For catalog requests, pricing, or partnerships, please visit:
<https://www.talbert.co.za>