

How long does a 12v 20a inverter work





Overview

So I'm gonna explain to you guys in simple words about what you can run on your any size inverter and what are the key point to keep in mind. And also how long your inverter will last with the battery with the help of examples, charts, and a calculator.

Our batteries store power in DC (Current current) but most of our household appliances require AC (Alternating current) Our batteries come in different voltages (12,24, & 48v) But AC appliances required 120 volts (because our grid power comes in 120 volts). So an.

There are a few points to keep in mind before getting into calculation stuff, Which are the basics and you need to know.

The next question which comes to mind that how long my inverter will last on load with a 12, 24, or 48v battery. To understand this first of all we need to know 1. What size battery is connected 2. Its type 3. total output load in watts

A rule of thumb is that the total output load should be less than the inverter capacity. For example,if you have a 3000-watt inverter you can run up to 2500 watts of output load with it. As I have mentioned earlier you have to keep in mind the efficiency rate of your.

How long will a 12 volt battery run an inverter?

However, you can determine how long will a 12 volt battery run an inverter depending on how many watts load and amp-hour the battery has. In general, a battery lasts about 10-17 hrs with a 12-volt battery inverter. Batteries work by creating current flow in a circuit through exchanging electrons in ionic chemical reactions.

How long does a 24V inverter last?

An inverter draws its power from the battery so the battery capacity and power load determines how long the inverter will last. Regardless of the size, the calculation steps are always the same. Using this calculation, a 24V inverter with a 100ah battery and 93% efficiency can run a 500W load for 2.3



hours.

How long can an inverter supply power?

The duration it can supply power depends on three key factors: Battery Capacity (Ah): The amount of energy stored in the battery. Inverter Efficiency (%): How effectively the inverter converts DC to AC power. Load Power (W): The total wattage consumed by connected devices. This knowledge is crucial for:.

How much power does a 12V inverter use?

For example: If you're running a 1500W inverter on your 12v battery with 1000 watts of total AC load. So your inverter will be consuming 83 amps (amps = watts/battery volts) from the battery for which you'll need a very thick cable. using a thin cable in this scenario can damage the inverter or you'll not be able to run your load.

What factors affect the runtime of a 12V battery using an inverter?

The runtime of a 12V battery using an inverter can be affected by several factors, including the battery capacity, the inverter load size, the efficiency of the inverter, and the power consumption of the device being powered. Other factors that can affect the runtime include the temperature, the age of the battery, and the depth of discharge.

How long can a 24V inverter run a 500W load?

Using this calculation, a 24V inverter with a 100ah battery and 93% efficiency can run a 500W load for 2.3 hours. You have a 24V inverter with a 150ah deep cycle battery. The inverter is 93% efficient. You want to run a 700 watt load, so how long can the inverter run this?

The inverter can run a 700 watt load for 2.4 hours.



How long does a 12v 20a inverter work

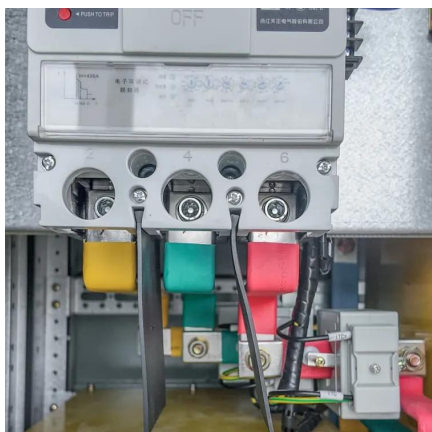


How to Understand Inverter Run Time with a 12 Volt Battery: A

Understanding inverter run time with a 12 volt battery is crucial for anyone relying on portable power solutions, especially in off-grid situations or during power outages. The run time ...

[Inverters supplied by Absolute Energy Solutions](#)

Battery backup Inverter Benefits Run your TV, PVR, DSTV, Lights, Security systems, Garage doors, Computers, etc. Long run battery backup times, up to 8 hours Suitable for home and ...



[How Long Will A 12V Battery Last With an Inverter](#)

But a crucial question lingers: how long will your 12v battery actually last when powering devices through an inverter? This blog post will be your guide to understanding how ...

[How to Calculate How Long an Inverter Will Last](#)

How long an inverter lasts depends on the battery and load. This simple guide explains how



to calculate inverter runtime of any size.



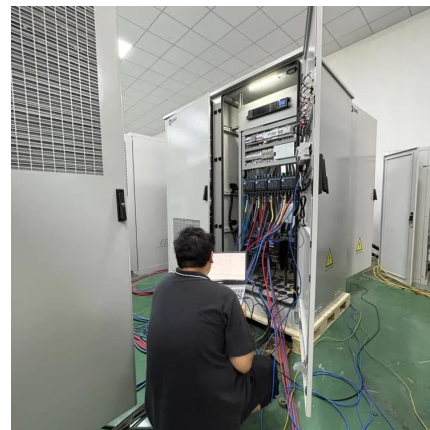
How Long Does a 12V Battery Last with a 2000W Inverter?

A 12V battery's runtime with a 2000W inverter depends on your usage. For short bursts (power tools, microwaves), a 200Ah battery works.



How long will 20v battery last powering inverter and consuming

It should work fine, and yes, parallel will multiply the AH by the number of packs. Be careful, though, that your converter can handle both the amperage and wattage.



12v inverter 2000w test with maximum continuous discharging

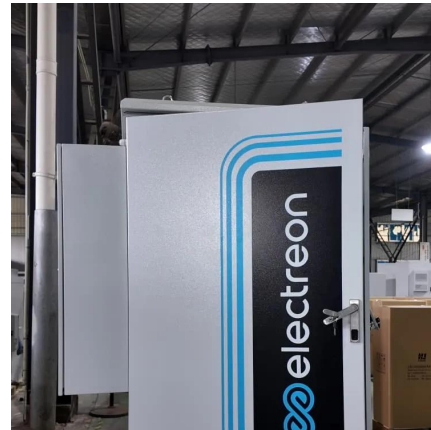
This inverter 2000w tests up to 100ah battery. It has a 12v output and a continuous current of up to 100A. It's perfect for powering tools, fans, or anything else that needs a reliable inverter.





Inverter Runtime: How Long Will It Run Off a Battery? Factors to

A 12-volt, 100Ah battery can run a 1000-watt load for about 1 hour and 6 minutes. A 200Ah battery can power the same load for roughly 2 hours and 12 minutes.



How Long Can I Run The Power Inverter On My Battery?

How long can a battery-powered inverter last? This article will explore this issue in depth, revealing how to scientifically match the power of the equipment, optimize load ...

Inverter Usage Time Calculator

Understanding how long your inverter will last is essential for efficient energy management and backup power planning. This guide explores the science behind inverter ...



How Long Will a 12V Battery Last with an Inverter?

A 12V battery's runtime with an inverter depends on the battery capacity (Ah), the inverter's efficiency, and the power load. On average, a 100Ah deep-cycle battery running a ...



How long will a 12v battery last with inverter

To calculate how long a 12V battery will last with an inverter, you need to determine the total power consumption of the inverter and the loads connected to the inverter ...

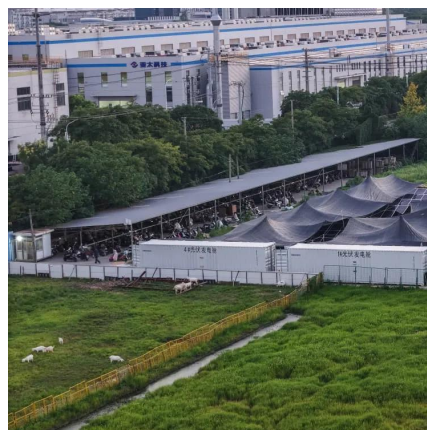


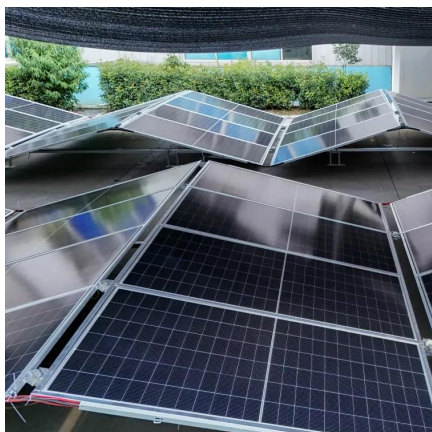
How Long Can I Run The Power Inverter On My Battery?

How long can a battery-powered inverter last? This article will explore this issue in depth, revealing how to scientifically match the power of ...

12 Volt Battery Inverter: How Long it will Last + Calculator

In general, a battery lasts about 10-17 hrs with a 12-volt battery inverter. Batteries work by creating current flow in a circuit through exchanging electrons in ionic chemical reactions.





[Watts, Volts, Amps Calculator - self2solar](#)

Battery Capacity: 500 Watt-Hours (Equal to 42 Amps-Hours at 12V; $500 / 12 = 42 \text{ Ah}$) Suppose you have a fan labeled 100 W, which is under ...

Amazon : BELTTT 3000W Pure Sine Wave Inverter 12V DC ...

BELTTT 3000W Pure Sine Wave Inverter 12V DC to 120V AC for RV, Truck, Off-Grid, Home, Solar Car Power Inverter with Dual AC, 20A Socket, 5V 2.1A USB, Hardwire Port, ...

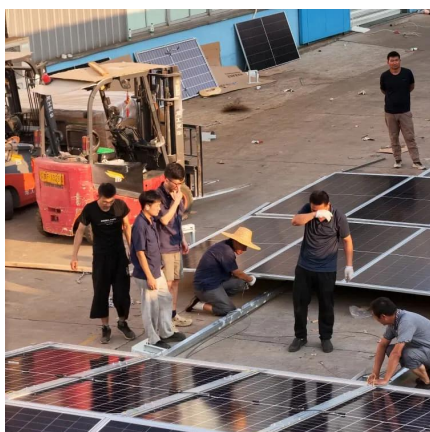
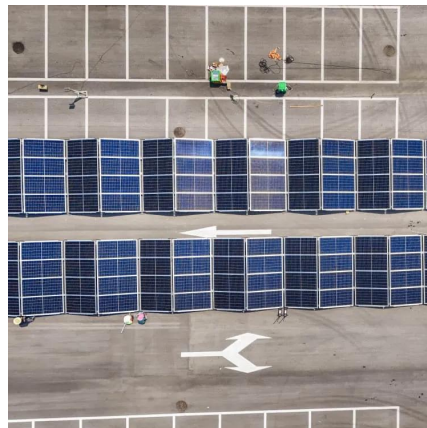


[Answers from the Power Inverter Experts](#)

Our Inverter FAQ Page answers questions about DC to AC power inverters. Call the pure and modified sine wave experts today at 866-419-2616.

How Long Will A Battery Power An Inverter? Key Factors For 12V ...

To calculate runtime, use the formula: (Battery capacity in watt-hours) divided by (inverter load in watts). Understanding these factors can help you estimate how long a battery ...



Inverter Calculator

Change values in the boxes with arrows and the calculator will adjust to show you other system specifications: Inverter Input Inverter Power Rating Inverter ...

Is this 12V battery backup set up correctly for a 120V sump pump?

The DC side (between battery and inverter) will not be operating at 15A with a 900W load. 900W from 12V requires 75A, plus some more for inverter inefficiency. If the motor ...



12 Volt Battery Inverter: How Long it will Last

In general, a battery lasts about 10-17 hrs with a 12-volt battery inverter. Batteries work by creating current flow in a circuit through exchanging ...



Inverters Guide

Inverter efficiency and battery capacity As with our example on microwaves above, inverters themselves also have an inefficiency because ...



How long will 20v battery last powering inverter and consuming

I have a bunch of 20v 5ah Bauer batteries and I wanted to use them to power a 500w pure sine inverter after being reduced to 12v with a converter. If I just plugged one in, how do I determine ...

[How Long Will A 12V Battery Last With an Inverter](#)

But a crucial question lingers: how long will your 12v battery actually last when powering devices through an inverter? This blog post will be your ...



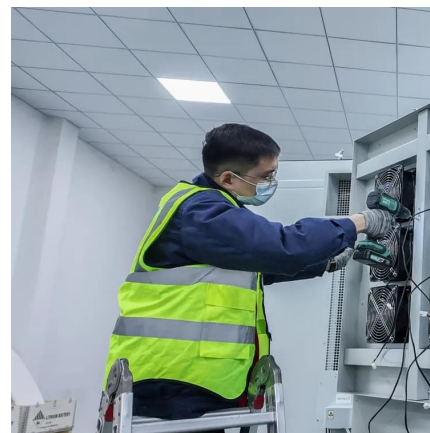
How Long Will a 12V Battery Last with an Inverter?

A 12V battery's runtime with an inverter depends on the battery capacity (Ah), the inverter's efficiency, and the power load. On average, a ...



What Will An Inverter Run & For How Long? (With Calculator)

So I'm gonna explain to you guys in simple words about what you can run on your any size inverter and what are the key point to keep in mind. And also how long your inverter ...



How Does An Inverter Work

1. How Does An Inverter Work At Home? By transforming the energy held in dc sources like batteries and rectifiers, the inverter converts direct current into alternating voltage. ...

[How long will a 12v battery last with inverter](#)

To calculate how long a 12V battery will last with an inverter, you need to determine the total power consumption of the inverter and the loads ...





Contact Us

For catalog requests, pricing, or partnerships, please visit:
<https://www.talbert.co.za>