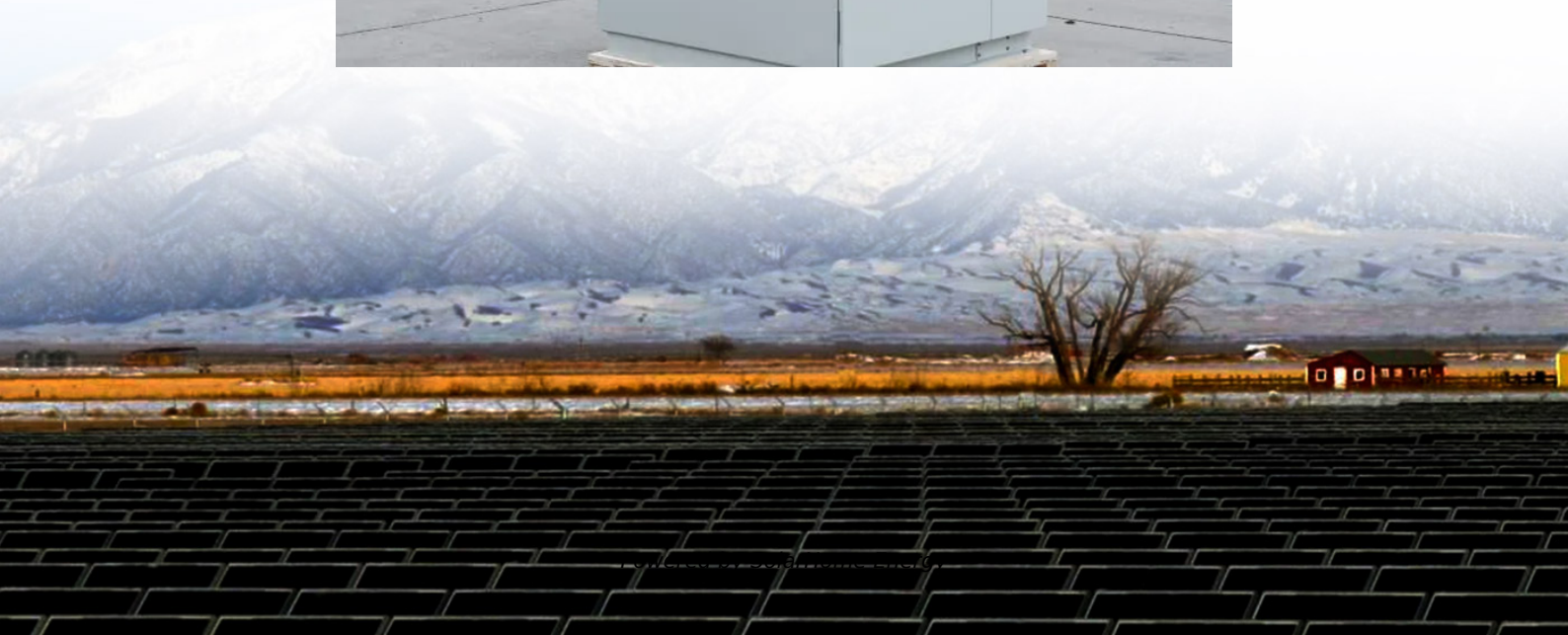


# **How long can a battery connected to an inverter last**





## Overview

---

An inverter battery lasts about 5 to 10 hours when fully charged. The backup time depends on the battery capacity and the load, which is the total energy consumption. You can use a formula or a battery backup calculator to determine the exact duration based on your specific voltage and usage. How to calculate battery life of a 12V inverter?

Divide the available battery capacity for Inverter by the overall power consumed by the inverter to get an estimate of the 12v battery life. Battery Running Time = Battery Capacity x 12v x DOD% x Inverter Efficiency / Inverter Rated Power.

How long can a 200Ah battery run a 1kW inverter?

Battery Running Time = ( Battery Power Capacity (Wh) / Inverter Power (W) ) x Inverter Efficiency %  
Battery Running Time = ( 2400 Wh / 1000 W ) x 95%  
Battery Running Time = 1.14 Hours or 1 Hour and 8 Minutes  
So, a 200Ah 12V lead acid battery with 50% DOD could power a 1kW inverter with 95% efficiency at maximum load for 1 Hour and 8 Minutes.

How long does a car battery last with an inverter?

It is not constant. However, based on experience, a 12 V battery lasts until 10-17 hours while connected into an inverter. There are things that you need to consider first before you can estimate the life capacity of a car battery that is attached to an inverter.

How long does a 12V battery run on a 3000W inverter?

So, battery running time for a 12V battery with a 3000W inverter (94% efficiency) is 0.3008 hours. Battery Running Time = 100Ah x 12v x 80% x 95% / 3000W = 0.3008 hours  
With a 5000W inverter (95% efficiency), a 12V battery will run for 0.1824 hours. Battery running time for a 12V battery with a 5000W inverter (95% efficiency) is 0.1824 hours.

How long does a 12V battery last?



With a 5000W inverter (95% efficiency), a 12V battery will run for 0.1824 hours. Battery running time for a 12V battery with a 5000W inverter (95% efficiency) is 0.1824 hours. Battery Running Time =  $100\text{Ah} \times 12\text{v} \times 80\% \times 92\% / 2000\text{W} = 0.4416$  hours When powered by a 2000W inverter (92% efficiency), a 12V battery will last 0.4416 hours.

Do inverters affect battery life?

Device Power Consumption: The wattage (W) of the appliances you connect to the inverter significantly impacts battery life. High-wattage devices like microwaves will drain your battery much faster than low-wattage items like phone chargers. Inverter Efficiency: Inverters aren't 100% efficient.



## How long can a battery connected to an inverter last

---



### How do you calculate how long a battery will last on an inverter?

To determine how long your battery will last, calculate the battery's total capacity and divide it by your circuit's power. Multiply the battery's reserve capacity by 60. With a reserve capacity, for ...

### How long will a battery last with an inverter

Yes and no, acutely the answer depends on the type of battery. If the battery is lithium (LiFePO4), you can expect it to last for one hour. If the ...



### How long will a battery last with an inverter

By satisfying the above-mentioned criteria, we can calculate how long will a 12V battery last with different loads connected with an inverter. How ...



### How Long Will A 12V Battery Last With An Inverter?

So I answered, "According to my experience, your 12V car battery will last with an inverter for



10-17 hours. Of course, there is a specific formula that you can follow, but it will depend on how ...

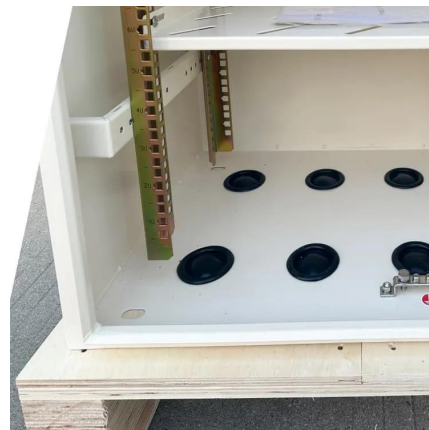


### [How Long Will A 12V Battery Last With an Inverter](#)

What is inverter efficiency, and how does it affect battery life? How can I maximize the lifespan of my 12V battery? Related Videos: [How Long Can a 12 Volt Battery Run a TV?](#)

### **How Long Will a 12V Battery Last with an Inverter?**

To understand how long a 12V battery will last with an inverter, it's important to consider the factors influencing battery run time. These factors ...



### **How Long Will a 12V Battery Last When Using an Inverter**

When connected to a 500W inverter (92% efficiency), a 12V battery will run for 1.7664 hours. These are the methods for calculating battery life.





## [How Long Will Car Battery Last With Inverter?](#)

By adding up the power consumption of all connected devices, you can estimate how long the battery will last based on its capacity. - Consider ...



## [How Long Will A 12V Battery Last With an Inverter](#)

But a crucial question lingers: how long will your 12v battery actually last when powering devices through an inverter? This blog post will be your guide to understanding how ...

## [How long will a 12v battery last with inverter](#)

To calculate how long a 12V battery will last with an inverter, you need to determine the total power consumption of the inverter and the loads ...



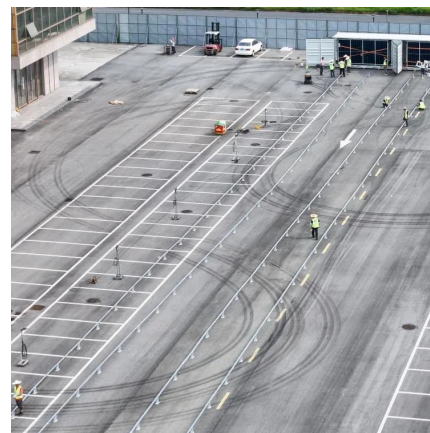
## **How Long Will a 2000 Watt Inverter Run? Battery ...**

A 2000 watt inverter is a versatile power solution, commonly used for RVs, off-grid solar systems, and emergency backup power. However, ...



## How Long Will A 12v Battery Last With An Inverter? Calculator

As a simple rule, to calculate how long a 12v deep-cycle battery will last with an inverter multiply battery amp-hours (Ah) by 12 to find watt-hours, and divide by the load watts ...



## How Long Will a Battery Last With an Inverter? (Calculator)

So I'm gonna explain to you guys in simple words about what you can run on your any size inverter and what are the key point to keep in mind. ...

## How Long Will a 12V Battery Last with an Inverter?

In off-grid solar power systems, understanding the battery life when using an inverter is crucial for optimizing performance. Whether you're powering ...





## How Long Will A Battery Last Using An Inverter? Calculate ...

What Factors Determine How Long a Battery Will Last with an Inverter? The duration a battery will last with an inverter is influenced by various factors such as battery ...

## What Will An Inverter Run & For How Long? (With Calculator)

So I'm gonna explain to you guys in simple words about what you can run on your any size inverter and what are the key point to keep in mind. And also how long your inverter ...



## How Long Will a 12V Battery Last with an Inverter?

To understand how long a 12V battery will last with an inverter, it's important to consider the factors influencing battery run time. These factors include: Battery Capacity: The capacity of a ...

## How Long Will a Battery Last With an Inverter? (Calculator)

One of the most common concerns that irritate solar power system owners is the battery running duration. This is very important since it tells you how much time your inverter ...





## Inverter Run Time Calculator

An inverter run time refers to the duration an inverter can supply power to connected devices using the stored energy in a battery. This parameter is crucial for planning ...



## [How long will a battery last with an inverter](#)

Yes and no, acutely the answer depends on the type of battery. If the battery is lithium (LiFePO4), you can expect it to last for one hour. If the battery is lead-acid, the battery ...



## How long will a 12V battery last with a 3000W inverter

Additionally, the age of the battery, along with the number of charge cycles it has gone through, can affect its capacity and efficiency over ...





### Can I connect an inverter directly to a battery?

Yes, you can connect an inverter directly to a battery bank. Once the batteries are connected correctly, simply route the positive and negative wires from the inverter to the ...



### How Long Will A 12V Battery Last With an Inverter

But a crucial question lingers: how long will your 12v battery actually last when powering devices through an inverter? This blog post will be your ...

### How long will a 12v battery last with inverter

To calculate how long a 12V battery will last with an inverter, you need to determine the total power consumption of the inverter and the loads connected to the inverter ...



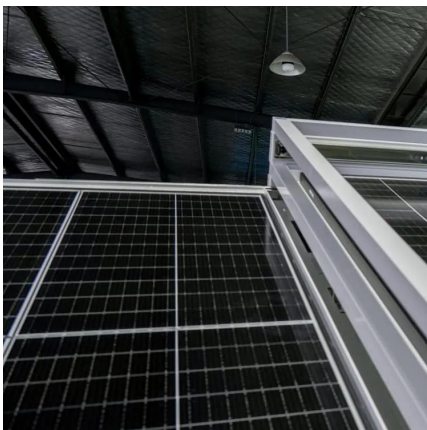
### **How Long Will A 12V Battery Last With An Inverter?**

So I answered, "According to my experience, your 12V car battery will last with an inverter for 10-17 hours. Of course, there is a specific formula that you can ...



## Battery Runtime Calculator: How Long Does Battery ...

How long will your battery last? find out with our easy-to-use battery runtime calculator.. (12v, 24v, 50ah, 150ah, 100ah, 200ah, 50ah)



## How Long Will a 12v Battery Last With 500w Inverter?

How long a 12v battery last with 500W inverter. In short, 12v battery will last between 40 minutes to 7 hours running a 500-watt inverter.

## Battery Runtime Calculator

How long will your battery last? find out with our easy-to-use battery runtime calculator. Calculator Assumptions This calculator will consider the efficiency of an inverter (90%) and the efficiency ...





## **How Long Will a Battery Last with an Inverter? Calculate Your ...**

This method provides a reliable estimate of how long a battery will last when used with an inverter. Understanding these components can help ensure that you select the correct ...

## **Contact Us**

---

For catalog requests, pricing, or partnerships, please visit:  
<https://www.talbert.co.za>