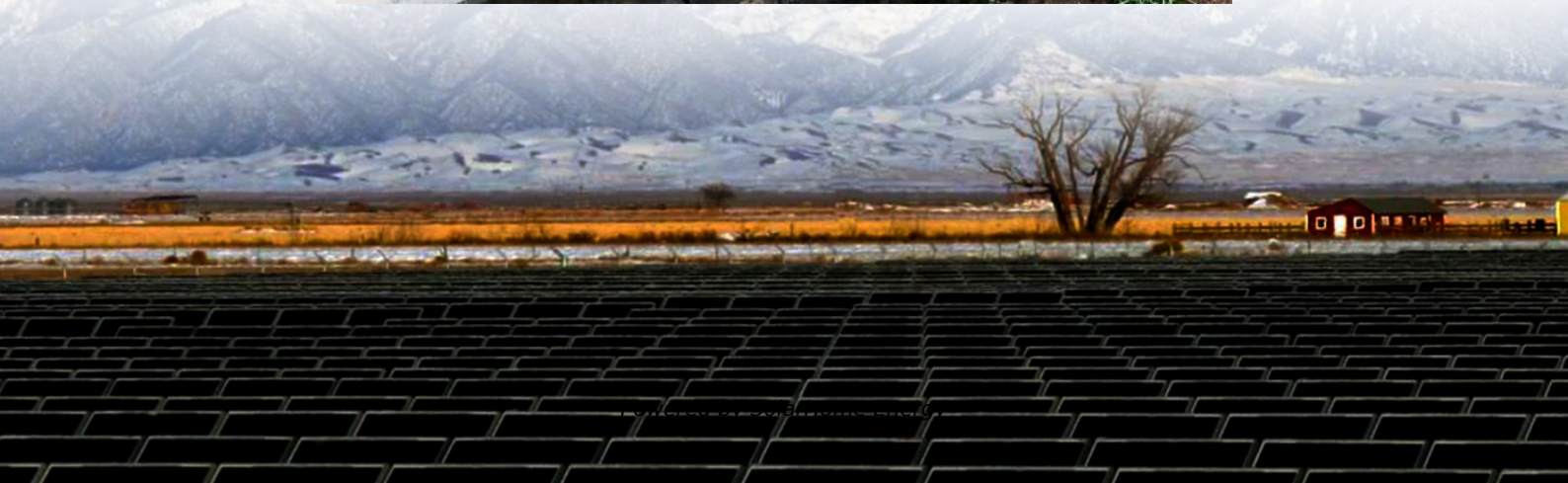
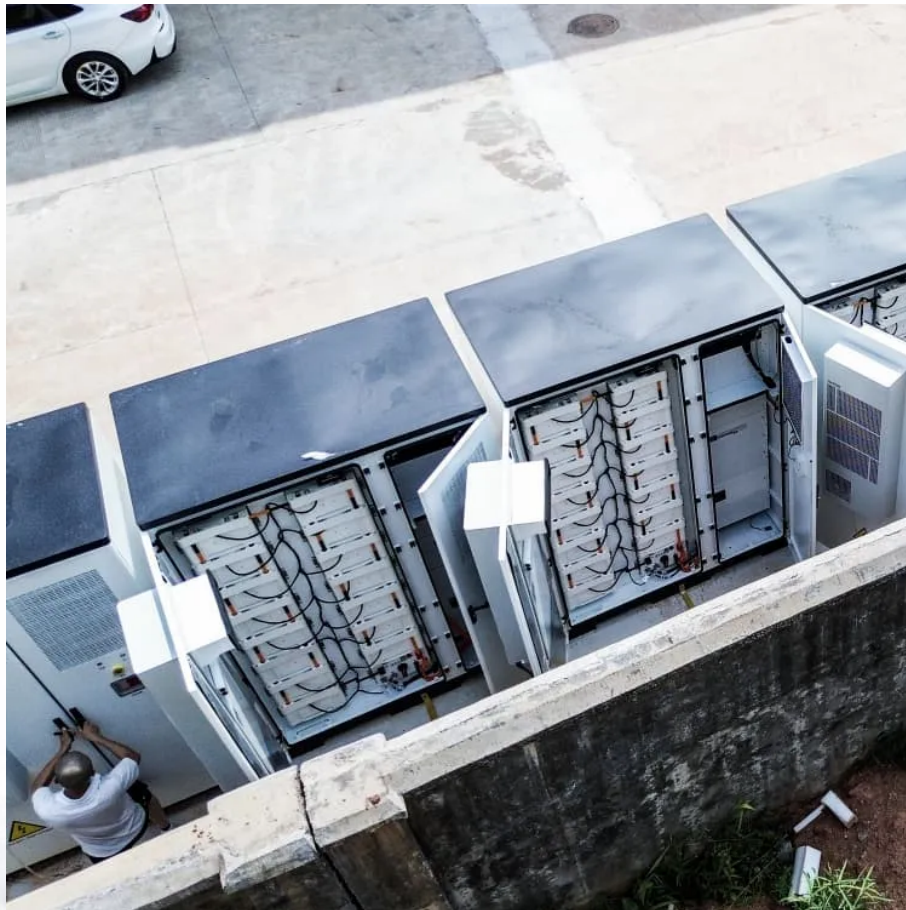


How long can a 200ah battery in a communication base station last





Overview

How long will a 200Ah battery last?

200Ah batteries will last from anywhere below 1 hour (running 2000W devices) to over 200 hours (running 10W devices). To help you out, we have prepared a 200 Amp-hour Battery Run Time Calculator (insert voltage, discharge rate, and wattage of the device you want to run, and the calculator will estimate how long will such a 200Ah DC battery last).

How long does a 200Ah battery run a 400W device?

You get the result: A 200Ah 12V AGM deep cycle battery will run a 400W device for 4.80 hours (that's 4 hours and 48 minutes). With this calculator, you can estimate running time for pretty much any battery. You can also check out a similar calculator for a 100Ah battery running time [here](#).

Will a 200Ah battery run a DC load?

In general, a 200Ah battery will run an AC load for less time than a DC load, simply because an inverter is needed to convert DC to AC. The best quality inverters are about 95% efficient, so you lose 5% running time as extra power is needed to power the inverter.

How long can a 200Ah lithium battery run?

Below the calculator, you will also find a 200Ah 12V Lithium Battery Run Time Chart and 200Ah 12V AGM Deep Cycle Battery Run Time Chart for devices between 10W to 3000W. Example of the kind of results you will get: This 12V 200Ah lithium-ion battery can run a 500-watt device for 4.32 hours (4 hours and 19 minutes).

How long does a 200 Ah battery run?

Just check the chart: A 200Ah deep cycle battery will run a 1000-watt device for 1.92 hours (1 hour and 55 minutes). Hopefully, you now know how to calculate the running time for any 200 Ah battery. The calculator and both of



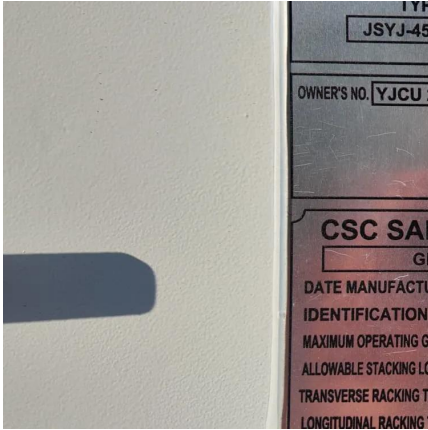
these charts will help you quite a lot.

How long will a 200Ah 12V LiFePO4 battery run a 100W device?

Here you have it: A 200Ah 12V LiFePO4 battery will run a 100W device for 21.6 hours (21 hours and 36 minutes). This is just one example. To avoid this manual calculation (maybe a bit complex), you can estimate the running time of any 200Ah battery running any device by using this following calculator:



How long can a 200ah battery in a communication base station last



[How many hours can 200Ah lithium battery last?](#)

Welcome to our blog post on the fascinating world of lithium batteries! If you've ever wondered how long a 200Ah lithium battery can last, you're in the right place. Lithium ...

48V 200Ah Rack Mounted Battery for Telecom Base Station

Emergency Situations: In times of natural disasters or power outages, the Base Station Battery can serve as an emergency backup power source for base stations, keeping communication ...



Understanding Battery Capacity and Inverter Compatibility

For a 200 Ah battery, the calculation depends on the battery's voltage. Assuming a 12V battery:
 $Wh = 200 \text{ Ah} \times 12 \text{ V} = 2400 \text{ Wh}$
Thus, a 200 Ah battery at 12 volts has a capacity of ...

How Long Will A 200Ah Battery Last

In this article, we break down the calculation of how long a 200Ah battery will last into three simple steps, provide a battery backup time ...



How Long Will A 200Ah Battery Last

In this article, we break down the calculation of how long a 200Ah battery will last into three simple steps, provide a battery backup time calculator, and conclude with insights on ...



How Long Will A 200Ah Battery Last With A 2000W ...

When using a battery-powered system with a 2000W inverter, it is crucial to understand how long a 200Ah battery can sustain the power load. ...



Battery Runtime Calculator , How Long Can A Battery ...

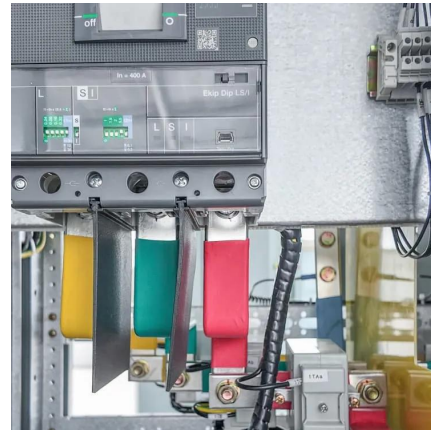
Battery Runtime is not just about knowing the duration; it's about planning, efficiency, and making the most out of your battery's potential.





200Ah Battery: How Long Can You Run It?

As you double the battery capacity, it can store more power and run longer. Therefore, a 200Ah battery can run twice compared to 100Ah. Therefore, it is a crucial factor in ...



How Long Will a 200Ah Battery Last (2025 Update) - LiTime-AU

Learn how long a 200Ah battery lasts, key factors affecting runtime, and practical tips for maximizing battery performance and efficiency.

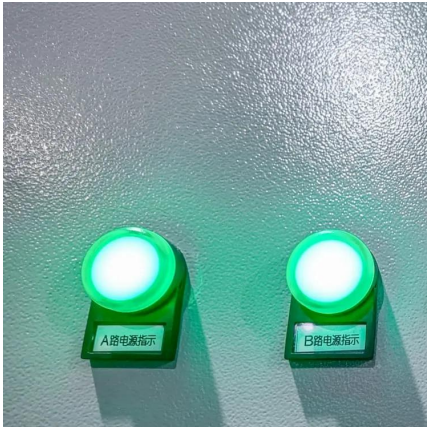
How Long Will A 200Ah Lithium Battery Last?

When it comes to 200Ah lithium battery for home solar battery storage, the longevity of your lithium battery 200Ah is one of the most important factors to consider. A 200 Ah lithium battery ...



How Long Will A 200Ah Battery Last? What Can It Run?

In general, a 200Ah battery will run an AC load for less time than a DC load, simply because an inverter is needed to convert DC to AC. The best quality inverters are about 95% efficient, so ...



Battery Runtime Calculator , How Long Can A Battery Last

Battery Runtime is not just about knowing the duration; it's about planning, efficiency, and making the most out of your battery's potential.



[How long will a 200Ah lithium battery last?](#)

A 200Ah lithium battery can last approximately 2.4 hours when powering a 1000W appliance continuously. The actual runtime depends on various factors, including the wattage ...

How Long Will A 200Ah Battery Last? Lithium, Deep Cycle

To help you out, we have prepared a 200 Amp-hour Battery Run Time Calculator (insert voltage, discharge rate, and wattage of the device you want to run, and the calculator will estimate how ...



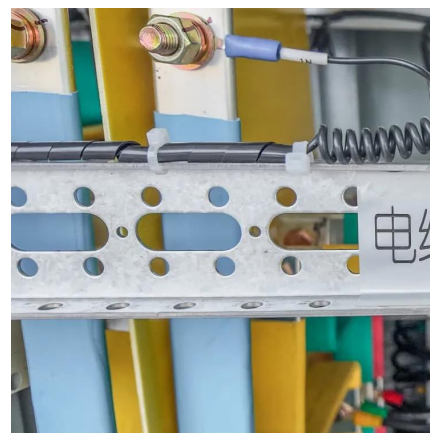


[How long will a 200Ah lithium battery last?](#)

When considering how long a 200Ah lithium battery will last, it's essential to factor in various elements such as load demand, temperature ...

How Long Will a 200Ah Battery Last on an Inverter?

A 200Ah battery can last approximately 10 hours when powering a 200W load or about 1 hour when running a 2000W inverter, depending on various factors like depth of ...



Lithium Iron Battery for Communication Base Stations

This 48V 200AH iron lithium energy storage battery is designed for communication base stations, offering reliable power in a rack-type configuration. It ensures long-lasting performance, high ...



How Long Does a 200Ah LiFePO4 Battery Last? The ...

Learn how long a 200Ah LiFePO4 battery lasts in RVs, boats, and off-grid setups. This blog covers its lifespan, usage, and key factors that affect ...



What devices can a 200Ah battery power? How long will it last?

Learn what devices a 200Ah battery can power and how long it will last. Complete guide with runtime examples for RVs, solar systems, boats, and home backup power.



THE 200AH COMMUNICATION BASE STATION BACKUP POWER LEAD ACID BATTERY

The traditional configuration method of a base station battery comprehensively considers the importance of the 5G base station, reliability of mains, geographical location, long-term ...



How Long Does A 24 volt Battery Last? (incl. Calculator)

calculate how long a 24V battery will last using our battery runtime calculator. This article includes examples of 24V batteries with capacities of ...





[How Long Will a 200ah Battery Last? \(Explained\)](#)

So, how long will a 200ah battery last? On average a 200ah battery will last between 2-hours and 8-hours depending on how many amps your appliances are drawing. If you are drawing 25 ...



[How Long Will a 200Ah Battery Last Calculator](#)

By inputting details such as load power, battery type, and depth of discharge, you'll gain a precise understanding of how long your battery will last in real ...

[How Long Will a 200Ah Battery Last Calculator](#)

By inputting details such as load power, battery type, and depth of discharge, you'll gain a precise understanding of how long your battery will last in real-world conditions. This simple tool can ...



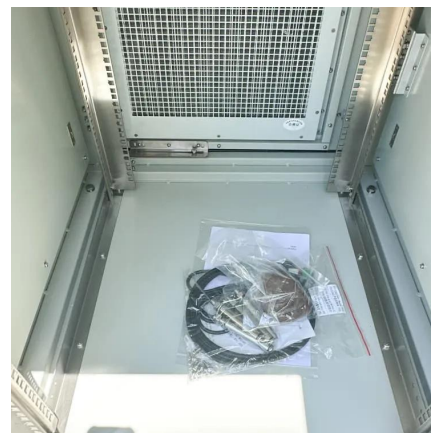
How Long Will A 200Ah Battery Last? Lithium, Deep ...

To help you out, we have prepared a 200 Amp-hour Battery Run Time Calculator (insert voltage, discharge rate, and wattage of the device you want to run, and ...



How Long Will a 200ah Battery Last? (Explained)

So, how long will a 200ah battery last? On average a 200ah battery will last between 2-hours and 8-hours depending on how many amps your appliances ...



How Long Does a 200Ah Battery Last?

The duration a 200Ah battery lasts depends on the load it supports. For example, if a battery powers a device that consumes 100 watts, it can last approximately 20 hours ...



Contact Us

For catalog requests, pricing, or partnerships, please visit:
<https://www.talbert.co.za>