

How is the Green Base Station connected to the Internet





Overview

How do I connect a base station to my router?

Connect the base station to your router using an Ethernet cable. Turn the base station on by pressing the On-Of button. The Power LED and Internet LED on the front of the base station light green in about two minutes.

What does a light on a base station mean?

Solid blue or green LED light – the base station receives active internet from the router. Solid or blinking amber internet LED light – the base station is experiencing an internet connection problem. No light (s) – the base station is disconnected from power. Check your outlet or the power cord.

How do I know if my base station is offline?

The physical base shows online w/ the three green lights on. The arlo app and web browser say “ Your base station is offline. Check if it is powered up and connected to the internet”. I have already disconnected the power and ethernet cable a few times, rebooted the router, and the issue persists.
2019-05-17 01:43 PM.

How do I know if my base station is working?

1. Ensure the base station is powered on and connected to a power source.
2. Check if the power light on the base station is solid green.
3. Make sure the Ethernet cable is securely connected to the base station and your Wi-Fi router or modem.
4. Check the internet connectivity LED on the base station. It should be solid green.
- 5.

How do I Check my Arlo base station's Internet connection?

To check your Arlo Base Station's internet connection, do the following:

1. Ensure the base station is powered on and connected to a power source.
2. Check if the power light on the base station is solid green.
3. Make sure the Ethernet cable is securely connected to the base station and your Wi-Fi router



or modem. 4.

How do I connect my Arlo base station to my router?

For the best experience, download the Arlo app for your smartphone by scanning the QR code below or searching for “Arlo” in the app store. Connect the base station to your router using an Ethernet cable. Turn the base station on by pressing the On-Of button.



How is the Green Base Station connected to the Internet



[How to Configure Internet for Your Station](#)

On your phone, PC or MAC, go into the settings and networks and connect to your HYFIX device's Wi-Fi. It should start with "MGW200_" or ...

My Arlo SmartHub or base station is offline; how can I ...

Test your Ethernet cable on another device. Try to connect to the Internet from a desktop or laptop computer that is connected directly to your ...



What do the LEDs on my Arlo SmartHub or Base Station mean?

Get clarity on the LED signals of your Arlo SmartHub or Base Station. Learn what each color and blink pattern signifies for optimal performance and connectivity. Understand their status to ...

My Arlo SmartHub or Base Station is offline; how can I ...

Follow this step-by-step guide to troubleshoot an offline Arlo SmartHub or Base Station. Learn the

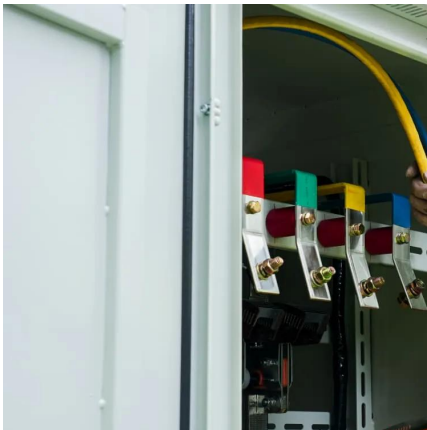


meaning of status LEDs and effectively restore your connection.



Arlo Base Station Not Connecting

Internet LED light - Solid Green when the base station is connected to the internet, Amber means the base is connected to the network but has no internet access, and off means ...



13 Ring Base Station Problems Troubleshooting (Solved)

The Ring Base Station is the central hub that keeps all your Ring devices connected and functional. If you're having issues with your Base Station, it's crucial to fix it ...



How to Configure Internet for Your Station , GEODNET DOCS ...

On your phone, PC or MAC, go into the settings and networks and connect to your HYFIX device's Wi-Fi. It should start with "MGW200_" or "MobileCM_". For password, enter in the ...



Arlo Quick Start Guide

Connect the base station to your router using an Ethernet cable. Connect the AC adapter to your base station and plug it in. Turn the base station on by pressing the On-Of button. The Power ...



Arlo won't discover base station

Unplug the power adapter of your Arlo SmartHub or Base Station and make sure the ethernet cable is connected. Begin the installation process again, but make sure to ...

How To Sync an Arlo Base Station to Your Phone ...

1. Connect the Base Station to the Internet To connect your Arlo base station to the internet, use an Ethernet cable to connect it to a wifi modem. Then, plug it ...



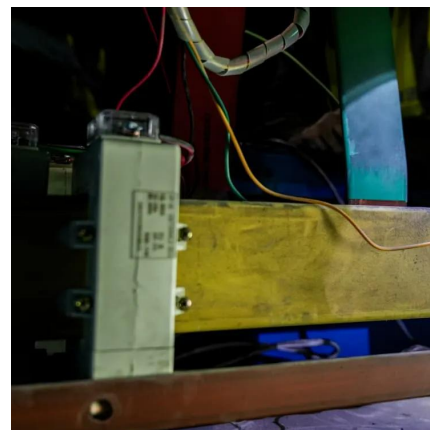
Arlo Base Station Offline

Unlike some security bases station, the Arlo base station must maintain an active router connection via an ethernet cable. You can also ...



Base Station internet LED is green, application says offline

The base station after doing a reset (and I've done several resets) does not connect to the Internet. The Internet light appears green, however, the ARLO application gives the ...



Dream Sock: Connecting to WiFi Using a Mobile Browser

Use this article to connect the Dream Sock base station to your Wi-Fi through a mobile internet browser to help you track little one's sleep trends. ...

Cellular Tower Maps

You can only measure stations in the network you are actively connected to, so for instance you can't locate a 4G base station if you are in a 3G network. Usually 2G/3G/4G/4G+ cells can all ...



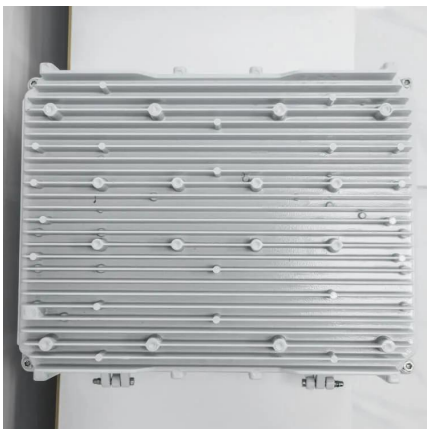


[Arlo Base Station Problems: 7 Common Issues \(Solved\)](#)

Simply connect your base station to your router via ethernet, log into your existing Arlo account (or create one), and view/connect your ...

Troubleshooting Netgear VMB3000 Base Station Connection ...

Unplug and re-insert both ends of the Ethernet cable connecting your base station to your router. Make sure that your router is powered on. If the Internet LED lights solid amber, your base ...



Advantage Voice Rove B1 + 20

If the topology does not have Power over Ethernet (PoE), plug the Ethernet Cable (A) into the port at the back of the base station and connect the other end to the Internet Access device. ...

[Solved: Arlo Pro base offline & lights are green](#)

Check if it is powered up and connected to the internet". I have already disconnected the power and ethernet cable a few times, rebooted the ...



Arlo can't discover my Base Station during installation; what do I do?

If the Internet LED is solid or blinking Green - the Base Station is connected to the Internet. If the Base Station is still undiscoverable, make sure that the mobile device is on the ...



[Arlo Base Station Quick Start Guide](#)

Get the Arlo app Download the free Arlo app to install your base station and camera. This app provides step-by-step instructions.



Troubleshooting Guide: How to Fix Arlo Base Station Offline Issues

When an Arlo base station is offline, it means that it is not connected to the internet or is experiencing a connectivity issue. This can happen due to various reasons such as a ...





Arlo Pro Base Internet Light Blinking Green

My understanding is that the internet light on solid means that the base is receiving an internet connection from the router to which it is attached. This does not mean that the ...



Arlo Base Station Offline

Unlike some security bases station, the Arlo base station must maintain an active router connection via an ethernet cable. You can also connect it to Wi-Fi extenders with ...

Arlo Base Station connected to Internet, but showing offline

We had some internet issues a few days ago, and since rebooting our router etc our base station is showing as Offline in the app. The cameras are synched, have been re ...



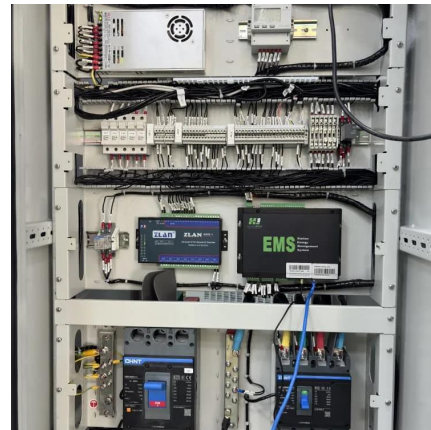
Solved: Arlo Pro base offline & lights are green

Check if it is powered up and connected to the internet". I have already disconnected the power and ethernet cable a few times, rebooted the router, and the issue ...



How to troubleshoot Arlo SmartHub or Base Station is offline

This guide will help you on how to troubleshoot Arlo SmartHub or Base Station is offline 2. SmartHub or Base Station is offline 1. Check the light indicator in the middle of your SmartHub ...



Base Station Definition

A base station also provides a bridged connection to another network, like an Ethernet -wired LAN or the Internet. Some base stations ...

Contact Us

For catalog requests, pricing, or partnerships, please visit:
<https://www.talbert.co.za>