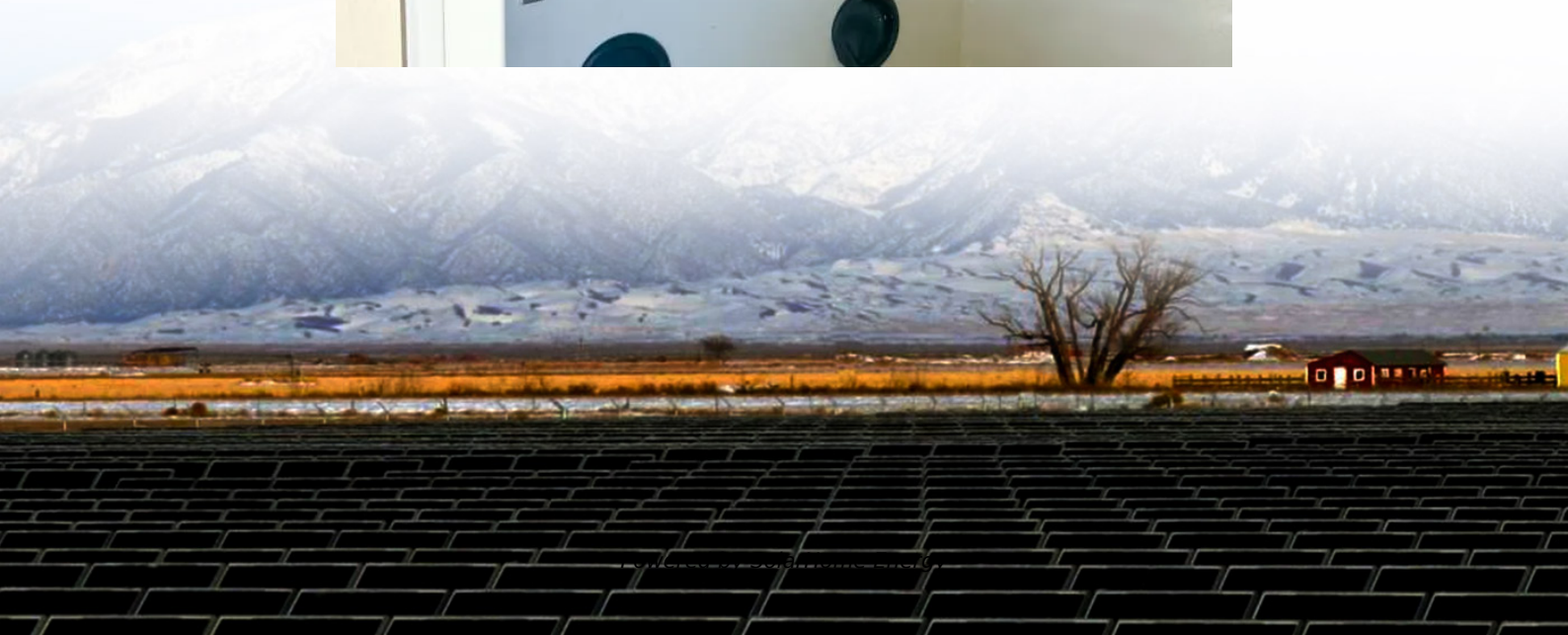


How high is the double-glass photovoltaic module





Overview

What is a double glass (Dual Glass) solar panel?

A double glass (Dual Glass) solar panel is a glass-glass module structure where a glass layer is used on the back of the modules instead of the traditional polymer backsheet. Double glass solar panels were originally heavy and expensive, but the lighter polymer backing panels gained most of the market share.

What is the difference between Raytech double glass solar modules?

Whereas for Raytech double-glass solar modules, with the increased strength brought by two layers of glass, a lot less deformation will happen in the solar cells, the possibility of microcracks formed on the solar cells will decrease significantly.

Are double-glass solar modules reactive or non-reactive?

Furthermore, comparing to plastic backsheets (the back material of single-glass solar module) which are reactive, glass is non-reactive. This means that the whole structure of Raytech double-glass solar modules (two layers of glass and one layer of solar cells in the middle) are highly resistant to chemical reactions such as corrosion as a whole.

What is the thickness of a glass module?

The thickness of the front glass generally used for this type of structure is 3.2 mm. Dual-glass type modules (also called double glass or glass-glass) are made up of two glass surfaces, on the front and on the rear with a thickness of 2.0 mm each.

What is the difference between double-glass solar panels and single-sided solar panels?

The main difference between double-glass photovoltaic modules and single-sided glass solar panels lies in their construction and design, which can impact



their durability, performance, and applications. Construction: Double-glass modules consist of two layers of glass sandwiching the solar cells and other components.

What are the benefits of double glazed solar panels?

Double-glazed solar panels, also known as dual glass solar panels, offer increased reliability, especially for large-scale photovoltaic projects. They provide better resistance to higher temperatures, humidity, and UV conditions and have better mechanical stability, which reduces the risk of microcracks during installation and operation.



How high is the double-glass photovoltaic module



What are Double Glass Solar Panels?

Double-glass solar modules are made up of two layers of tempered glass that cover both sides of the solar panel. As snow accumulates on a typical solar panel or people ...

HJT Bifacial Double Glass 620W 625Wp 630W ...

Mogen Solar 120 Half Cells HJT 620W 630W 635W 640W Bifacial Dual Glass Solar Module
Mogen Solar launched a new generation of ultra-high efficiency ...



Double the strengths, double the benefits

In contrast, double glass modules replace the polymer layer with another glass sheet, creating a robust sandwich structure. At IBC SOLAR, we ...

Experimental investigation on the combustion performance of ...

Under similar glass material conditions, double-glazed modules exhibited superior combustion



performance compared to their single-glass counterparts. Therefore, locations ...



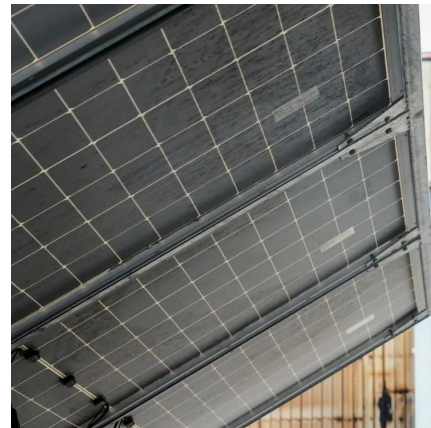
2025 Complete Guide to Glass-Glass Solar Panels: ...

Compared to traditional glass-backsheet modules, they offer greater durability and environmental resistance. The dual-glass structure provides enhanced ...



What are the differences between single-glass and ...

As a high-quality manufacturer and supplier of Double Glass Solar Panels, solar modules, and Solar Panels, we provide you with high-quality ...



[Double the strengths, double the benefits](#)

In contrast, double glass modules replace the polymer layer with another glass sheet, creating a robust sandwich structure. At IBC SOLAR, we use 2,0 mm x 2,0 mm glass ...





What is the Double Glass (Dual Glass) Photovoltaic ...

Glass-glass module structures (Dual Glass or Double Glass) is a technology that uses a glass layer on the back of the modules instead of the ...



INSTRUCTIONS FOR PREPARATION OF PAPERS

ABSTRACT: Double-glass modules provide a heavy-duty solution for harsh environments with high temperature, high humidity or high UV conditions that usually impact the reliability of ...

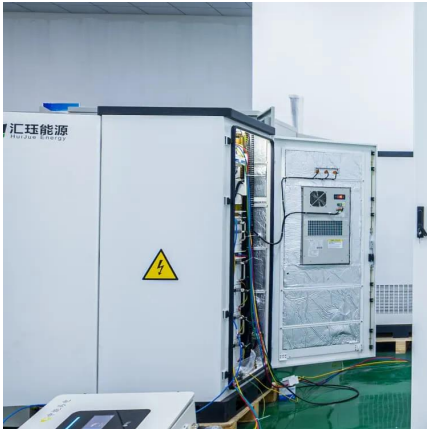
What is the Double Glass (Dual Glass) Photovoltaic Solar Panel?

Due to the technical production and properties of N-type silicon cells, the bifaciality of HJT Solar Panels is the highest on market at 80-95%. PERC bifacial factor is on average ...



Single-glass versus double-glass: a deep dive into module ...

Double-glass modules, with their performance in the face of salt mist, high temperatures and high humidity, have won the market's favour. However, this trend is not ...



The Difference Between Double-glass and Single-sided Glass ...

The main difference between double-glass photovoltaic modules and single-sided glass solar panels lies in their construction and design, which can impact their durability, ...



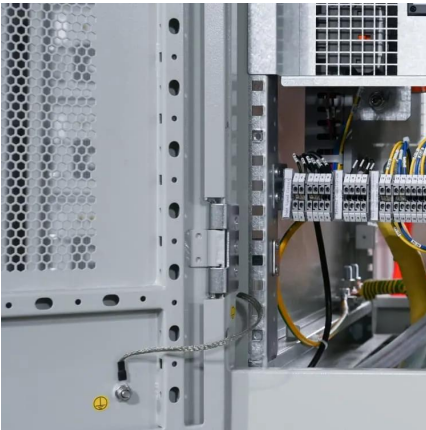
Double Glass Solar Panel Thickness Guide: Find Your ...

At around 14.25kg per square meter, it's about 3.75kg lighter than the heaviest option. That might not sound like much, but when you're installing ...

Degradation and Failure Modes in New Photovoltaic ...

"The new report, Degradation and Failure Modes in New Photovoltaic Cell and Module Technologies, highlights key factors that impact the reliability of ...





Double Glass PV Module Recycling Line

Bifacial solar panels, also called double-glass PV modules, are different from standard photovoltaic panels because both the front and back sides are equipped with solar cells.

Segment Analysis of Photovoltaic Grade EVA Resins Market: ...

2 days ago· The photovoltaic grade EVA resins market is witnessing significant growth driven by expanding solar energy installations worldwide, technological advancements in module ...



Difference Between Single Glass and Double Glass Solar Panels

In dual-glass solar panels, an additional layer of tempered glass is attached to the back of the module, therefore replacing the backsheet. Using two layers of glass makes the solar panel ...

Mono PERC Bifacial Double Glass Photovoltaic Solar Panel ...

EVO 6 Series Mono PERC 132 Half Cells 650W 655W 660W 665W 670W Bifacial Dual Glass Solar Module Based on 210mm silicon wafer and 132 half-cut mono-crystalline PERC cell, the ...



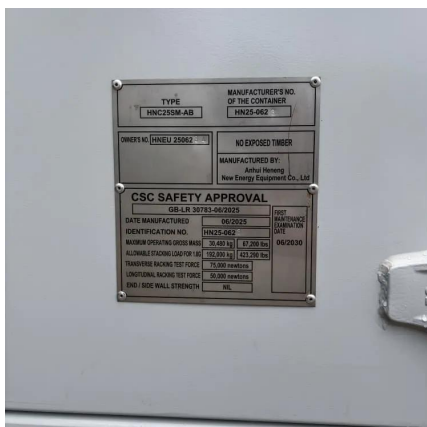
2025 Complete Guide to Glass-Glass Solar Panels: The Top ...

Compared to traditional glass-backsheet modules, they offer greater durability and environmental resistance. The dual-glass structure provides enhanced protection for solar cells against ...



What is the Double Glass Photovoltaic Solar Panel?

Due to the technical production and properties of N-type silicon cells, the bifaciality of HJT Solar Panels is the highest on market at 80-95%. PERC bifacial factor is on average level 70%. HJT ...



[Double glass solar module , Maysun Solar](#)

Why Choose Double Glass Solar Modules? Glass-glass solar modules (bifacial modules) increase energy production by approximately 2% to 5% compared to traditional glass-backsheet ...



PV module laminators

BÜRKLE's SL and VFF processes stand for the high-quality lamination of glass backsheet and glass-glass modules for the production of solar modules.



What is the Double Glass Photovoltaic Solar Panel?

Due to the technical production and properties of N-type silicon cells, the bifaciality of HJT Solar Panels is the highest on market at 80-95%. PERC ...

Double Glass Solar Panel Thickness Guide: Find Your Perfect ...

At around 14.25kg per square meter, it's about 3.75kg lighter than the heaviest option. That might not sound like much, but when you're installing dozens of panels on a roof, ...



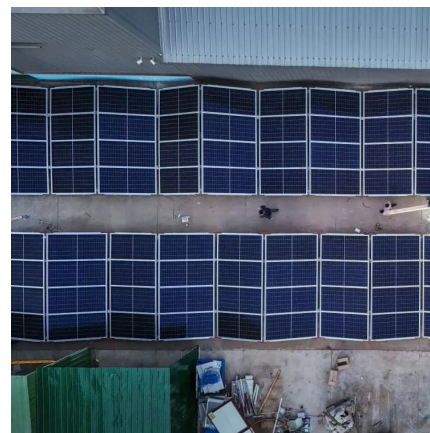
The Difference Between Double-glass and Single ...

The main difference between double-glass photovoltaic modules and single-sided glass solar panels lies in their construction and design, which ...



Photovoltaic Glass

Features Photovoltaic modules in safety and security glass - BIPV (Building Integrated Photovoltaic) are similar to laminated glass typically used in ...

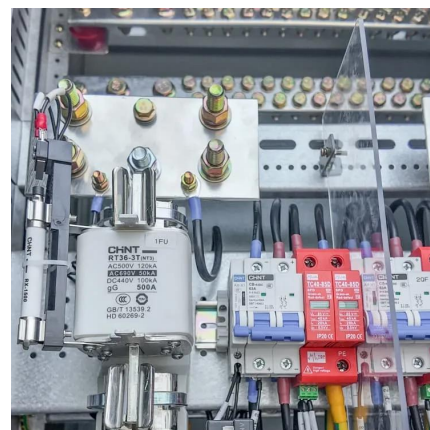


What are the advantages of dual-glass Dualsun modules?

The thickness of the front glass generally used for this type of structure is 3.2 mm. Dual-glass type modules (also called double glass or glass-glass) are made up of two glass surfaces, on the ...

Growth Strategies in Double Glass Module Photovoltaic Glass ...

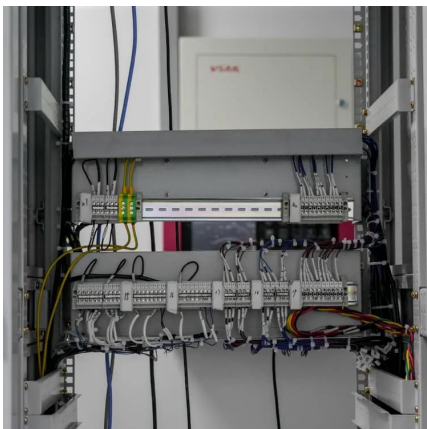
The global double glass module photovoltaic glass market is projected to reach a value of USD 29.5 billion by 2033, exhibiting a CAGR of 11.5% during the forecast period from ...





High Efficiency Anti-Reflective Coating for PV Module Glass

Without antireflective coating, more than 4% of incident light is reflected from the standard front cover glass of photovoltaic (PV) modules. Module efficiency is one of the largest levers to ...



What are Double Glass Solar Panels?

Due to the technical production and properties of N-type silicon cells, the bifaciality of HJT Solar Panels is the highest on market at 80-95%. ...



What are the differences between single-glass and double-glass ...

As a high-quality manufacturer and supplier of Double Glass Solar Panels, solar modules, and Solar Panels, we provide you with high-quality products and PV module ...

Contact Us

For catalog requests, pricing, or partnerships, please visit:
<https://www.talbert.co.za>