

How far away is the inverter from the communication base station in the Marshall Islands





Overview

NASA's Space Communications and Navigation (SCaN) program enables this data exchange, whether it's with astronauts aboard the International Space Station, rovers on Mars, or the Artemis mission.

How does a Mars rover communicate back to Earth?

For communications back to Earth, the rover makes use of intermediate spacecraft, Odyssey and the Mars Reconnaissance Orbiter, and a network of ground stations in the US, Spain and Australia. I will describe the overall system, and then the important components for communications: Curiosity, Odyssey, MRO, and the ground stations.

How do Mars rovers send data back home?

Orbiters circling the planet, including NASA's Mars Odyssey and Mars Reconnaissance Orbiter, or MRO, and ESA's Trace Gas Orbiter, or TGO, similarly send science data back home. Perseverance and other Mars rovers get most commands directly from Earth via X band radio waves.

How long does a Mars rover signal take to reach Earth?

Depending on the positions of Mars and Earth, a signal can take anywhere from 5 to 24 minutes to travel one way. Q2. Why does the Mars Rover use satellites to communicate instead of sending signals directly to Earth?

Direct communication from the Rover to Earth requires significant energy and offers lower data transmission speeds.

How important is a good communications infrastructure for Mars missions?

Establishing a good communications infrastructure is essential for human missions to Mars, says Claire Parfitt, a systems engineer with the European Space Agency, or ESA, who is based in Noordwijk, Netherlands. "At the moment, we're in the early stages of working out what that means."

How does the Mars 2020 persistence Rover work?



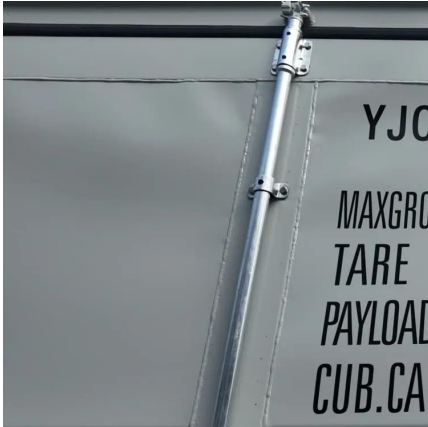
The recently launched Mars 2020 Perseverance rover will send data through orbiters around Mars, which forward the data to Earth. Relays offer unique advantages in terms of communications availability.

How long does a Mars rover take to send data?

The Mars Rover can only send a few megabits per second, meaning high-quality images and data sets take a significant amount of time to transfer. A high-resolution image, for instance, might take several hours or even days to send fully back to Earth. Mars' thin atmosphere and frequent dust storms can cause signal disruption.



How far away is the inverter from the communication base station i

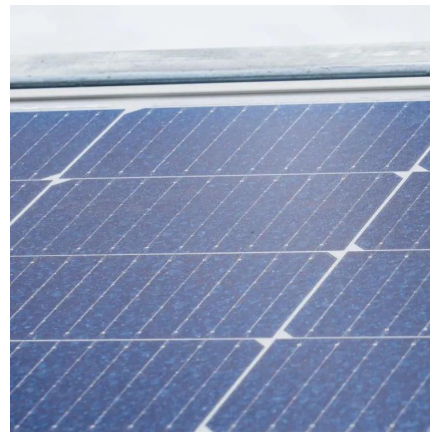


FAR , Acquisition.GOV

Federal Acquisition Regulation Full FAR Download
in Various Formats Browse FAR Part/Subpart and
Download in Various Formats

The Federal Acquisition Regulation (FAR): Answers to ...

The FAR, which is codified in Title 48 of the Code
of Federal Regulations(C.F.R.), generally governs
acquisitions of goods and services by executive
branch agencies.



Recommended 5 GMRS Base Stations

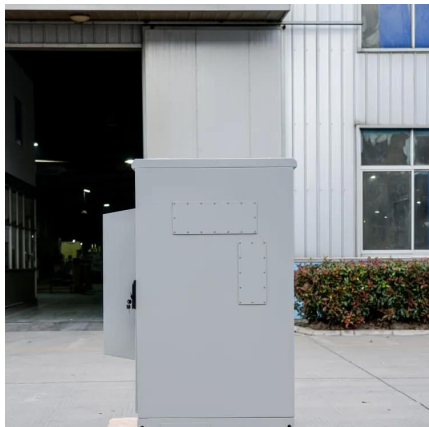
Choose the best GMRS base station for your
communication needs using my comprehensive
guide with top recommendations and ...

Talking to Martians: Communications with Mars Curiosity Rover

If we know the relationship between the amount



of power lost versus the distance a signal propagates, then we can predict how far away MRO can be from Earth such that the received ...



Major Overhaul of Federal Acquisition Regulation (FAR) - What ...

4 days ago · Overview The federal government has launched a sweeping effort to re-write and streamline the Federal Acquisition Regulation (“FAR”), paired with a package of ...

DPC , Defense Acquisition Regulations System , FAR

Federal Acquisition Regulation (FAR) The FAR provides uniform acquisition policies and procedures for use by all Executive agencies. An electronic version of the official ...



[Federal Acquisition Regulation , GSA](#)

The Federal Acquisition Regulation (FAR) is the primary regulation for use by all executive agencies in their acquisition of supplies and services with appropriated funds. The ...



Inverter communication mode and application scenario

The data signal is connected to the low-voltage busbar through the power line on the AC side of the inverter, the signal is analyzed by the inverter supporting the data collector, and the ...



[How Does NASA Communicate With Spacecraft?](#)

The farther away a spacecraft is, the larger the antenna you need to detect its signal. The largest antenna at each DSN site is 70 meters (230 feet) in diameter.

Federal Acquisition Regulation

The Federal Acquisition Regulation (FAR) is the principal set of rules regarding Government procurement in the United States. The document describes the procedures executive branch ...



48 CFR Part 1 -

The Federal Acquisition Regulations System is established for the codification and publication of uniform policies and procedures for acquisition by all executive agencies.



The Federal Acquisition Regulation (FAR): Answers to Frequently ...

The FAR, which is codified in Title 48 of the Code of Federal Regulations (C.F.R.), generally governs acquisitions of goods and services by executive branch agencies.



Acquisition regulations

GSA is responsible for two acquisition regulations. The Federal Acquisition Regulation (FAR) was established to codify uniform policies for acquisition of supplies and ...

Communications with Earth , Mission - NASA Mars Exploration

This distance is accurate to about five to ten meters (16-33 feet), even though the spacecraft may be 200 billion meters away!



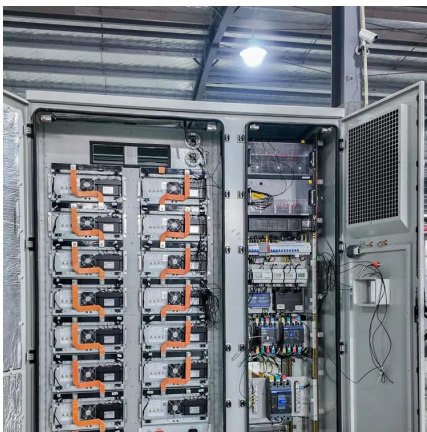


[SMDC History: Kwajalein joins GPS system , Article](#)

The Ronald Reagan Ballistic Missile Defense Test Site and its Kwajalein Missile Range predecessor at Kwajalein Atoll in the Republic of the ...

Base stations and mobile networks

Base station Mobile network A mobile network is made up of many base stations that each provide coverage in its surrounding area.



Part 1

The Federal Acquisition Regulations System consists of the Federal Acquisition Regulation (FAR), which is the primary document, and agency acquisition regulations that implement or ...

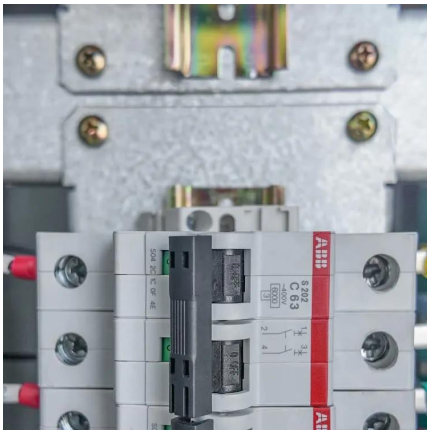
FAR Overhaul

4 days ago· Each album includes a summary of key changes made by the deviation, a line-out document highlighting what was removed from the FAR, and any additional resources, such ...



FAR , Acquisition.GOV

CAAC Consultation to Issue a Class Deviation From the Federal Acquisition Regulation (FAR) Regarding Legal Challenges to Executive Order 14026, Increasing the Minimum Wage for ...



Hollow Knight: Silksong Far Fields Map Guide , GamesHedge

4 days ago· This Hollow Knight: Silksong Far Fields Map Guide will help you find Shakra easily and obtain the Far Fields map from her in the game.



Update on the FAR Overhaul , Government Contracts Insights

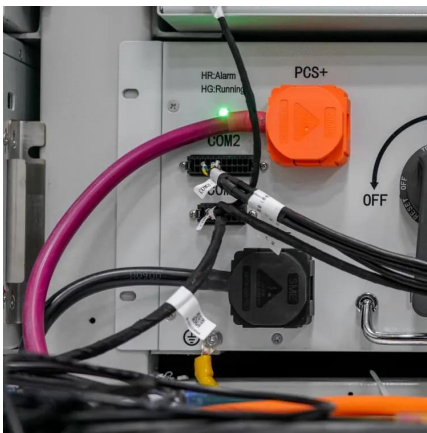
As of August 28, 2025, the project to overhaul the Federal Acquisition Regulation (FAR) has finished FAR Parts 1, 4-6, 8-12, 18, 26, 28-31, 33-36, 38-40, 43, 46, 48-51, and various ...





FAR Council releases changes to 6 sections of acquisition ...

The FAR Council released new text for six parts of the FAR on Thursday -- parts 4, 8, 12, 38, 40 and 51 -- including the section dealing with commercial acquisition.

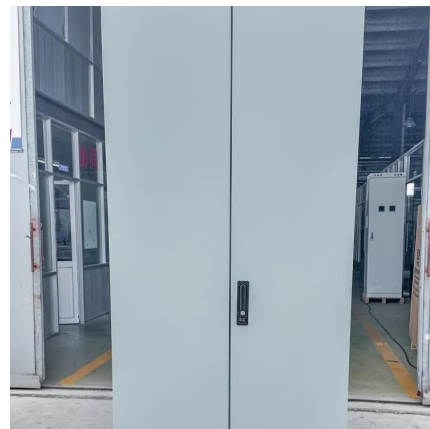


[How Macron Failed to Curb the Far Right](#)

2 days ago · How Macron Failed to Curb the Far Right As France drifted to the right, the president has tried to make the country more business-friendly and win back voters. His strategy hasn't ...

United States Army

This Garrison could not exist without the superb teamwork between our diverse community and the government of the Republic of the Marshall Islands. I ask you to join us in fostering these ...



Site Energy Revolution: How Solar Energy Systems Reshape Communication

The benefits far outweigh the limitations, making solar-powered communication base stations a viable, eco-friendly solution. In short, integrating solar energy systems into ...



How to get communication with a far away rover. : r

An RA-100 with a L3 comms station (or any relay antenna around Laythe, with the probe in sight, connected to a craft with a Kerbal in it) in orbit would be enough to control even a probe with ...



ESA Science & Technology

For up to six hours during the spacecraft's 7.5 hour Martian orbit, the high gain antenna will point towards Earth for communications between the spacecraft and three ground ...

Communication and Control For Inverters

Working Group Title: "Communications Systems for Distributed Energy Resources (DER)" Provide one international standard that would define the communication and control interfaces for all ...





Communication Base Station Inverter Application

Base station type: Power requirements for small base stations typically range from a few hundred watts to several kilowatts. Larger base stations or those that support more ...

What is the FAR? A Beginner's Guide to Government Contracting

The FAR is a comprehensive set of rules and guidelines established by the federal government to standardize and regulate the procurement process for government contracts. It is a critical ...

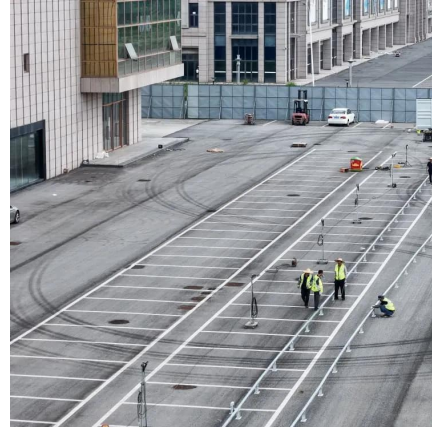


A Guide to Understanding the Federal Acquisition Regulation (FAR...

The FAR is a complex document that outlines a set of rules and regulations for the federal government's purchasing process. In other words, the FAR is essentially the primary ...

Inverter/Batteries in compartment

How far away would the inverter be from the batteries? It's certainly possible with a partitioned, well ventilated battery bank. Even then, just to be ...



Plan Distance Between Components

Plan Distance Between Components Follow the table below for maximum distances for wired communication between system components. Wire gauge must meet local codes.



Marshfield Base Station

The Marshfield Base Station of the Mount Washington Cog Railway was reached from Fabyan's junction, at the terminus of two major railroad lines, the BC& M ...



Applied Physics Capstone Report: Implementation of a ...

The rover is expected to travel close to the base station inside a natural bowl. Distance and LOS are not a concern. We now have to account for interference in the bowl, because last year it ...





Contact Us

For catalog requests, pricing, or partnerships, please visit:
<https://www.talbert.co.za>