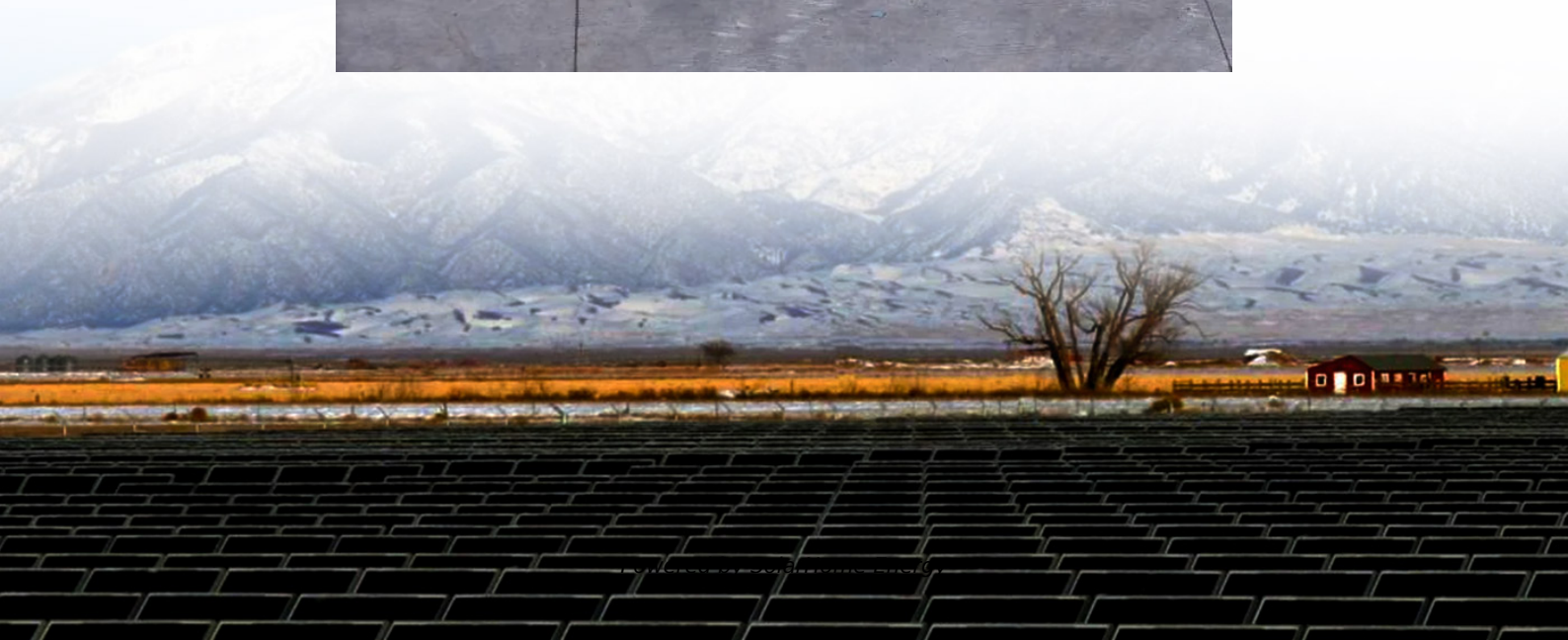


How big of an inverter do 12v household appliances need





Overview

Before we go any further, we highly recommend that you choose a pure sine wave inverter. This type of inverter delivers high-quality electricity, similar to your utility company. This way, none of your appliances run the risk of being damaged. Now, when it comes to sizing your inverter, you always need to check.

We have summarized the appliances that inverters from 300W to 3000W can run depending on their rated maximum power. Note to our readers: Use the above formula to determine.

What size inverter do I Need?

The right size inverter for your specific application depends on how much wattage your devices require. This information is usually printed somewhere on electronic devices, although it may show voltage and amperage ratings instead.

What are the different solar inverter sizes?

Solar generators range in size from small generators for short camping trips to large off-grid power systems for a boat or house. Consequently, inverter sizes vary greatly. During our research, we discovered that most inverters range in size from 300 watts up to over 3000 watts. In this article, we guide you through the different inverter sizes.

How to calculate inverter size?

Using the Inverter Size Calculator is quick and easy. You'll need three inputs: Total Wattage (W): This is the total power consumption of all the appliances or devices you plan to run through the inverter. Safety Factor: A multiplier to ensure some buffer above your actual power requirement. Typically ranges from 1.1 to 1.5.

Why does inverter size matter?

1. Introduction: Why Inverter Size Matters An inverter converts DC power (from batteries or solar panels) into AC power (for household appliances).



Picking the wrong size can lead to:

How much power does an inverter need?

The continuous power requirement is actually 2250 but when sizing an inverter, you have to plan for the start up so the inverter can handle it. Third, you need to decide how long you want to run 2250 watts. Let's say you would like to power these items for an eight-hour period.

What is a 12 volt inverter?

An inverter is a device that turns the power from a 12 volt DC battery, like the one in your car or truck, into the 120 volt AC power that runs all of the electronics in your house. You can use one of these devices to power all sorts of devices in your car, but it's important to figure out how big of an inverter you need first.



How big of an inverter do 12v household appliances need

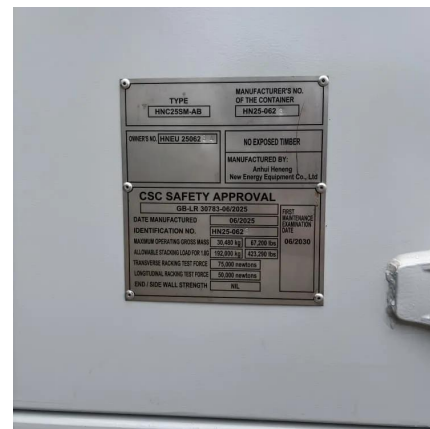


What Size Inverter Do I Need for My RV?

RV inverters allow conversion from 12V battery power to 120V AC power. For your power needs, you need the right size inverter for your RV.

What Size Inverter Do I Need

In this guide, we'll walk you through everything you need to know to calculate the right inverter size for your specific needs, from basic considerations to advanced power ...



Inverter Size Calculator

When building a solar system, designing an off-grid power setup, or running appliances on backup power, one of the most essential steps is determining the correct inverter size. Choosing the ...

What Appliances Can A Home Battery System Run?

How Many Batteries Does It Take To Run A Refrigerator? You'll need anything from 50Ah to



300Ah (Amp-hours) of battery capacity to power a refrigerator for 24 hours. Small ...

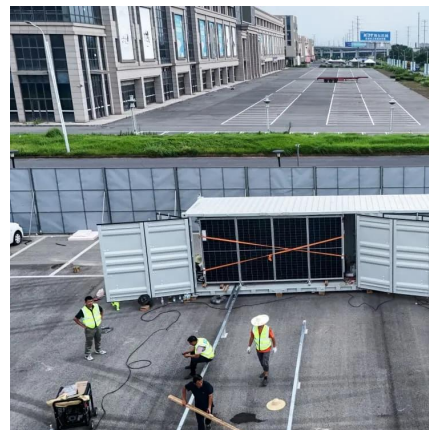


Which Inverter Size Do I Need?

What Is An Inverter? An inverter is a device that converts direct current (DC) electricity into alternating current (AC) electricity. This is crucial because most household ...

What Size Power Inverter Is Needed for a House [Full ...

In general, a 3000W to 5000W inverter works well for most homes, but the exact size depends on factors like household appliances, total power ...



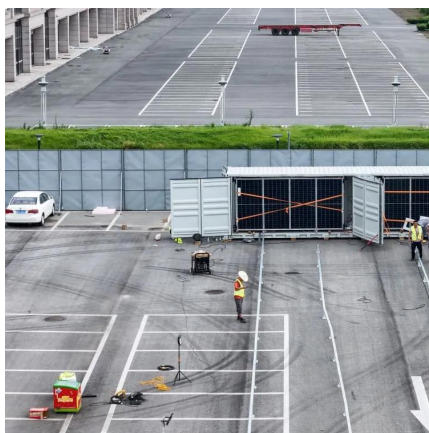
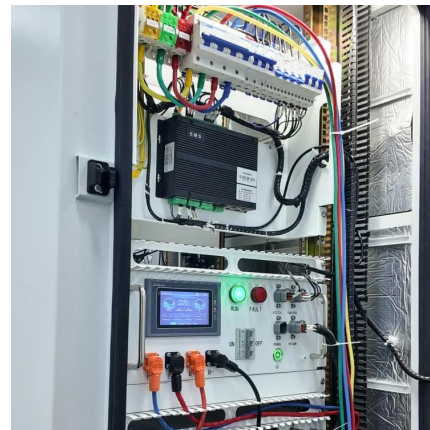
What Size Inverter Will Run a Home? , Fenice Energy

Inverter Battery Capacity = (Total Power Requirement) X (Backup Hours - Duration of power cut/ duration you need the inverter battery to supply power) / (Battery ...



What Size Inverter Do I Need For My Camper

Once you know how much power your appliances use (by checking out how much power they use at home), decide what size inverter you need in order to meet that demand in your camper or ...



The Only Inverter Size Chart You'll Ever Need

We have created a comprehensive inverter size chart to help you select the correct inverter to power your appliances.

What Size Inverter Do I Need?

How Big of an Inverter Do I Need? Finding the proper inverter size for your needs is as simple as adding together the necessary wattages of the items that you're looking to power.



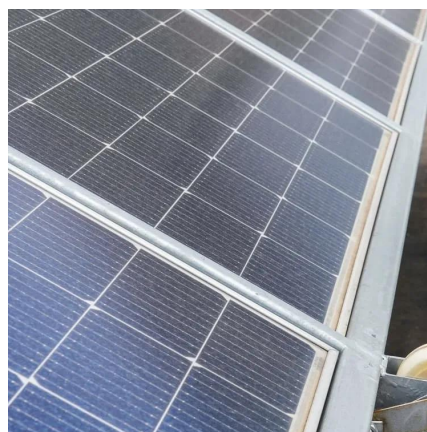
Find the Right Inverter Size: How Big An Inverter Do ...

How Much Power Is Enough for an Inverter? The right size inverter for your specific application depends on how much wattage your devices ...



How Big of an Inverter Do You Need to Run a Camper?

An inverter converts the DC electricity stored in your camper's batteries into the AC power that most of your household appliances need to ...



What Size Inverter Do You Need? A Complete Guide ...

Choosing the right inverter size is crucial--too small, and your appliances won't work; too large, and you'll waste money. This guide will help ...

What Size Power Inverter Is Needed for a House [Full ...

You know you need a power inverter, but the big question is: How big of a power inverter do I need? In general, a 3000W to 5000W inverter ...



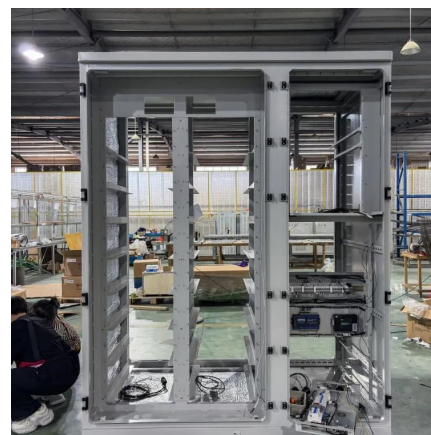


How to select an inverter

What size of inverter do I need? As a very rough rule of thumb - same as your solar panel system; for a 6 kilo Watt peak (kWp) solar panel system, you would need a 6 kW ...

What Size Inverter Do I Need to Run a Fridge, Kettle, or Microwave?

Choosing the right inverter size is essential to safely and efficiently power your appliances while camping, touring, or living off-grid. In this guide, we'll break down the inverter ...



What Size Inverter Do I Need

In this guide, we'll walk you through everything you need to know to calculate the right inverter size for your specific needs, from basic ...

What Size Inverter Do You Need for Your Home? - PowerGen USA

Choosing the correct inverter size is essential for powering your home's electrical loads safely, efficiently, and without interruption. Inverter size is measured in watts (W) and ...



Finding the Perfect Inverter Size for Your Refrigerator: A

Understanding Inverters: The Basics Before diving into specifics, it's essential to understand what an inverter does and how it functions. An inverter is an electrical device that ...



What Size Inverter Do You Need for Your Home? - ...

Choosing the correct inverter size is essential for powering your home's electrical loads safely, efficiently, and without interruption. Inverter size ...



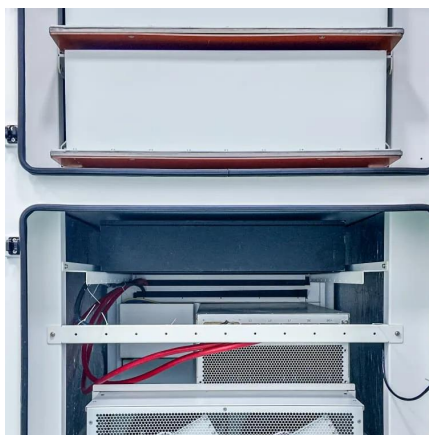
What Size Power Inverter Is Needed for a House [Full Guide]

In general, a 3000W to 5000W inverter works well for most homes, but the exact size depends on factors like household appliances, total power consumption, and battery ...



What Size Inverter Do You Need for Your Home? , Renogy US

Though it largely depends on your house's size and the number of appliances you want to run with the inverter, a 3000W to 5000W inverter is enough to power most appliances of an ...



Find the Right Inverter Size: How Big An Inverter Do You need?

How Much Power Is Enough for an Inverter? The right size inverter for your specific application depends on how much wattage your devices require. This information is ...

A Guide to Inverters

Researching how electricity can power household kit while you're not connected to the mains grid? We look at the pros and cons of inverters in this guide.



What Size Inverter Do I Need?

How Big of an Inverter Do I Need? Finding the proper inverter size for your needs is as simple as adding together the necessary wattages of the items that ...



HOW DO I KNOW WHAT SIZE INVERTER I NEED?

HOW DO I KNOW WHAT SIZE INVERTER I NEED? , YOUR GUIDE TO POWERING APPLIANCES OFF-GRID From brewing your morning coffee to running a microwave at camp, the right inverter makes powering your favorite appliances off-grid simple.

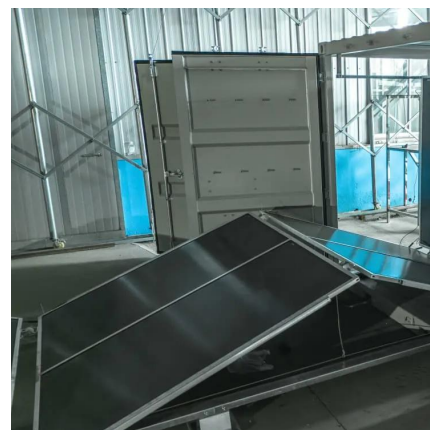


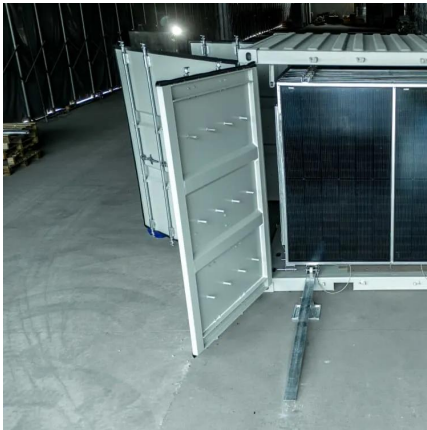
Go Power! Inverter Calculator

What size inverter do I need ? This easy-to-use inverter sizing calculator helps you find your perfect AC power solution in a few simple steps.

What Size Inverter Do You Need To Run Your Fridge?

~ Links ~(When available, we use affiliate links and may earn a commission)500W Cont. 1000W Peak Inverter (BESTEK) - <https://amzn.to/3Sr5IfM>700W Cont. 1400W





What Size Inverter Do You Need? A Complete Guide for Home, ...

Choosing the right inverter size is crucial--too small, and your appliances won't work; too large, and you'll waste money. This guide will help you determine the ideal inverter ...

What Size Inverter Do I Need for Camping? (Including Examples)

Discover the perfect inverter size for your next camping adventure. Learn how to calculate your power needs, choose between pure and modified sine wave inverters, and explore practical ...



Contact Us

For catalog requests, pricing, or partnerships, please visit:
<https://www.talbert.co.za>