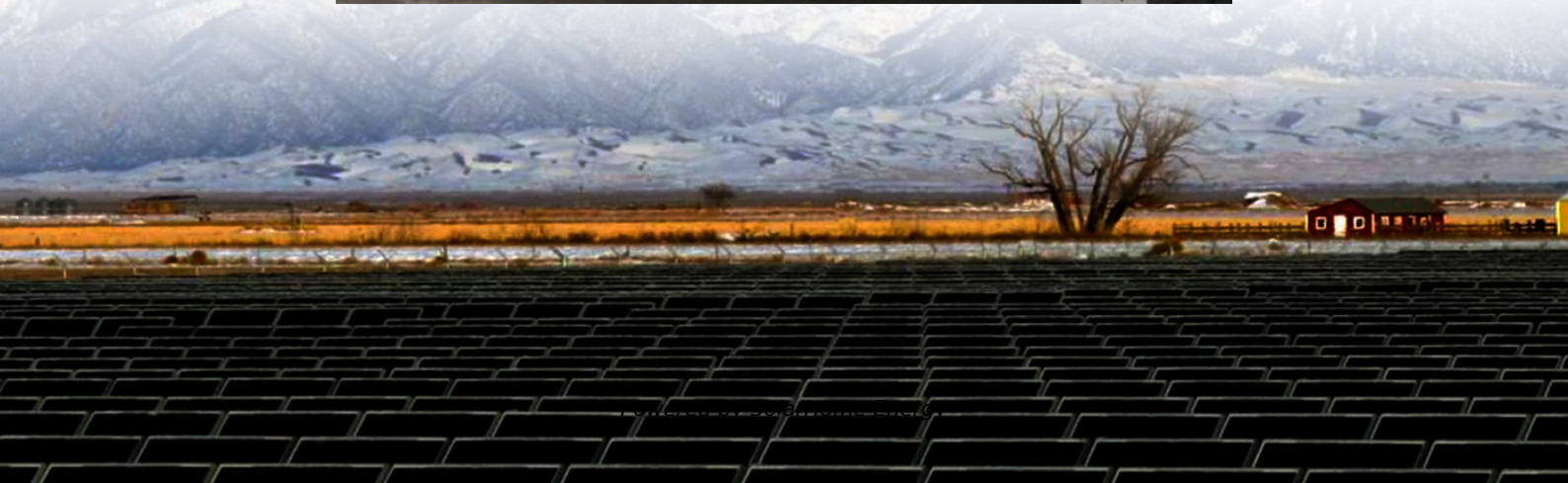


How big an inverter should I use for a 7kw photovoltaic power generation





Overview

This guide breaks down what size solar inverter you actually need—so your setup runs smooth, efficient, and stress-free from day one. What Size Solar Inverter Do I Need?

A solar inverter should closely match your solar system's output in kW—typically within 80% to 120% of your total panel capacity. How do I choose a solar inverter size?

To calculate the ideal inverter size for your solar PV system, you should consider the total wattage of your solar panels and the specific conditions of your installation site. The general rule is to ensure the inverter's maximum capacity closely matches or slightly exceeds the solar panel array's peak power output.

How much solar power can a 5kw inverter produce?

Under the Clean Energy Council rules for accredited installers, the solar panel capacity can only exceed the inverter capacity by 33%. That means for a typical 5kW inverter you can go up to a maximum of 6.6kW of solar panel output within the rules.

What is a solar inverter sizing calculator?

A solar inverter sizing calculator is a tool used to determine the appropriate size of a solar inverter for your solar power system based on the total power consumption of connected appliances and the size of your solar panel array. It ensures the inverter can handle the peak loads efficiently.

What wattage should a solar inverter be?

Solar inverter sizing is rated in watts (W). As a general rule of thumb, your solar inverter wattage should be about the same as your solar array's total capacity, within the optimal ratio. For example, a 6.6kW array typically uses a 5kW inverter.



Are solar inverters the same size?

No, solar inverters are not the same size, as the size you need will depend on the generation capacity of your solar array. There is no one-size-fits-all inverter, as the size affects the unit's efficiency and larger inverters are more expensive. The easiest way to calculate the solar inverter size you need is to check the DC rating.

Can a solar inverter be bigger than the DC rating?

The size of your solar inverter can be larger or smaller than the DC rating of your solar array, to a certain extent. The array-to-inverter ratio of a solar panel system is the DC rating of your solar array divided by the maximum AC output of your inverter. For example, if your array is 6 kW with a 6000 W inverter, the array-to-inverter ratio is 1.



How big an inverter should I use for a 7kw photovoltaic power gene



[What Can a Solar System Run: 3KW, 8kW, 20kW](#)

What can a 3kW or 8kW solar system run in an average household? Discover the differences and make an informed decision for your ...

What Size Inverter Do I Need for a Solar Panel System?

To help you choose the right size solar inverter and matching battery, a solar inverter size selection comparison table is provided below. This table will help you quickly ...



[How To Size A Solar Inverter in 3 Easy Steps](#)

Choose an inverter that has a surge watt rating equal to or greater than this value. As for voltage drop, check the wire length between your solar panels and the batteries. If the wire length is ...

[7kW Solar Panel System: Cost Breakdown and Savings](#)

Inverters: Since solar panels generate DC electricity, inverters are crucial for converting



this into alternating current (AC) that household appliances and the electrical grid ...



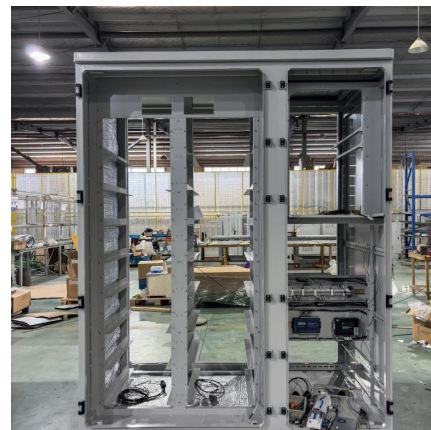
How to select an inverter

There are plenty of options available when it comes to selecting an inverter. Inverters vary in size, efficiency, performance, and capabilities. So ...



How To Size an Inverter: Solar Inverter Sizing Explained

When sizing an inverter, calculate the total wattage needed and understand surge vs. continuous power. Choose the right size with a 20% safety margin. Factor in simultaneous ...



What Size Inverter Do I Need for a Solar Panel System?

To help you choose the right size solar inverter and matching battery, a solar inverter size selection comparison table is provided below. ...





[Inverter Size Calculator - self2solar](#)

Choosing the right inverter size is essential for a reliable and efficient solar power system. Our Inverter Size Calculator simplifies this task by accurately estimating the ...



What Size Inverter Do I Need ?A Complete Guide to Choosing ...

Discover how to select the perfect inverter size for your solar or backup power system. Learn to calculate power requirements, account for surge loads, match battery ...

[Solar Inverter Sizing Calculator: Important Guide](#)

This comprehensive guide will walk you through solar inverter sizing, explain its importance, and help you understand how to use a solar inverter sizing calculator effectively.



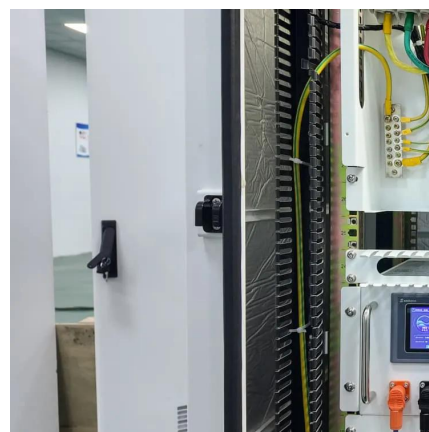
What Size Inverter Do I Need for My Solar Panel ...

Inverters work most efficiently at their maximum power and as a general rule should roughly match the solar panel output. For instance, a 3kW ...



What Size Solar Inverter Do I Need? Experts Break It Down

What Size Solar Inverter Do I Need? A solar inverter should closely match your solar system's output in kW--typically within 80% to 120% of your total panel capacity.

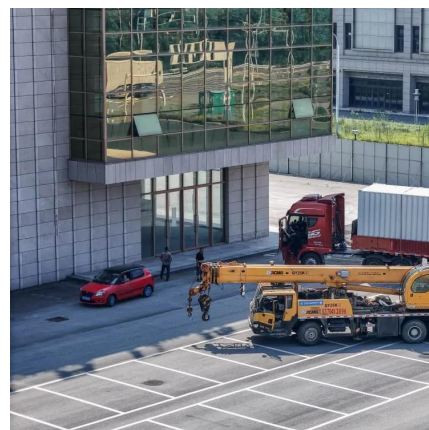


How does sizing a solar inverter work?

As a general rule of thumb, the size of your inverter should be similar to the DC rating of your solar panel system; if you are installing a 6 kilowatt (kW) system, you can expect ...

How To Size an Inverter: Solar Inverter Sizing Explained

To calculate the required capacity for your solar inverter, sum up the total wattage of your solar panels and adjust based on expected system efficiency, shading, and the specific ...



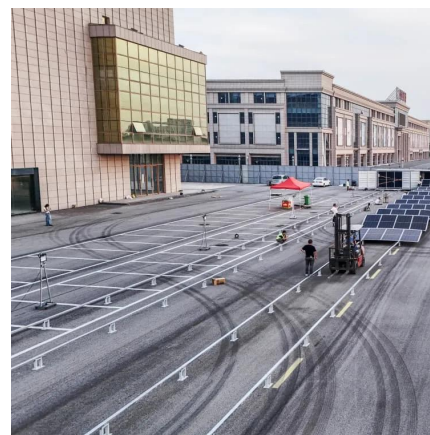


Solar Inverter Sizing to Improve Solar Panel Efficiency

To calculate the required capacity for your solar inverter, sum up the total wattage of your solar panels and adjust based on expected system efficiency, shading, and the specific ...

[Solar Panel Output Calculator - Dot Watts®](#)

Use this solar panel output calculator to find out the total output, production, or power generation from your solar panels per day, month, or in ...



How do you properly size an inverter for a house? : r/solar

The AC output will always be at most the size of the inverter, not the DC input to the inverter. But that's just power -- power over time is energy which is what you use. I very very strongly ...

[Solar Panel Inverter Size Calculator](#)

Getting the 12v inverter size calculator, solar inverter calculation formula, and inverter sizing for pv system right is key. It makes sure the inverter can handle the power ...



Understanding Solar Inverter Sizes: What Size Do You Need?

Did you know solar inverters come in different sizes? Learn why size is important and which size inverter you need for your solar PV system here.



How to pick the right Inverter: Guide from Naked Solar

Inverter sizes are expressed in kW which is normally sized lower than the kWp of an array. This is because inverters are more efficient when working at their ...



What Size Inverter Do I Need?

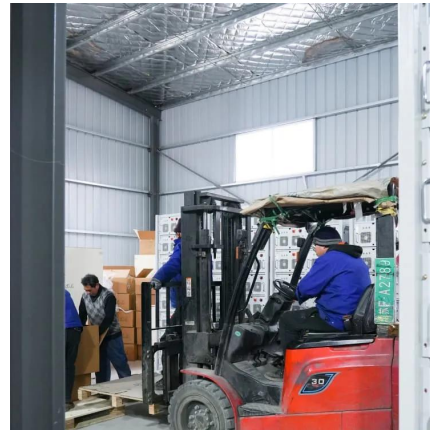
Inverter Size Calculator Learning how to calculate inverter size for your needs can be a tricky task, especially if you're unfamiliar with how an inverter works or ...





[Inverter Size Calculator - self2solar](#)

Choosing the right inverter size is essential for a reliable and efficient solar power system. Our Inverter Size Calculator simplifies this task ...

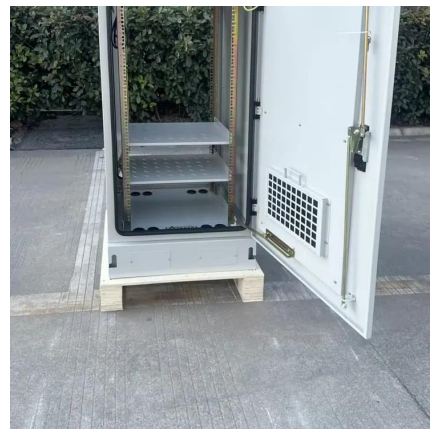


[Solar Inverter Sizing Calculator: Important Guide](#)

This comprehensive guide will walk you through solar inverter sizing, explain its importance, and help you understand how to use a solar ...

Understanding Solar Inverter Sizes: What Size Do ...

Did you know solar inverters come in different sizes? Learn why size is important and which size inverter you need for your solar PV system here.



Exact size of the Transformer for a Commercial solar project.

For instance, SMA's 62.5kW Core-1 inverter, has a power rating of 62.5 kW, and an apparent power rating of 66 kW. This gives you flexibility to support up to 21.2 kVAR of ...



[Solar Inverter Sizing Calculator: Important Guide](#)

When designing a solar power system, selecting the right inverter is crucial. An incorrectly sized solar inverter can lead to inefficiency, wasted ...

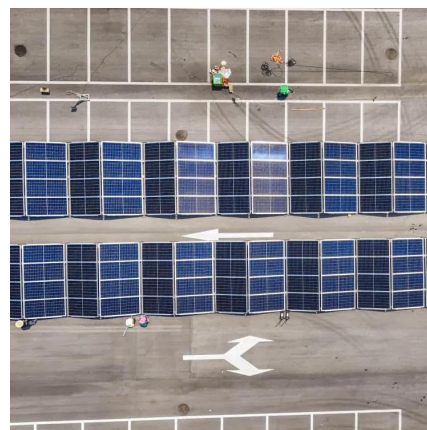


How to Determine the Right Inverter Sizes for Your ...

Choosing the right inverter size ensures your electrical needs are met efficiently and safely. An inverter converts direct current (DC) electricity ...

[How To Size A Solar Inverter in 3 Easy Steps](#)

As a general rule of thumb, the size of your inverter should be similar to the DC rating of your solar panel system; if you are installing a 6 ...



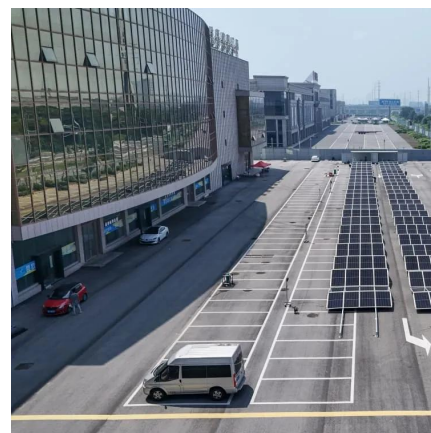


Find the Right Inverter Size: How Big An Inverter Do You need?

When it comes to powering your devices through an inverter, one of the most critical aspects to consider is size--how big an inverter do you need? Whether you're on an ...

Inverter Size Calculator [Power Inverter, AC, DC, ...]

The Inverter Size Calculator helps determine the appropriate inverter size for your power needs, whether for home appliances, solar ...



Contact Us

For catalog requests, pricing, or partnerships, please visit:
<https://www.talbert.co.za>