

How big an inverter should I use for a 250w solar panel





Overview

Your solar inverter should have a similar or slightly higher wattage rating than the DC output of your solar panels (which in this case is 4.5 kW). You can size it between 1.15 and 1.5 times larger. The rule of thumb is to size your inverter 1.25 bigger than your solar array. How do I choose a solar inverter size?

To calculate the ideal inverter size for your solar PV system, you should consider the total wattage of your solar panels and the specific conditions of your installation site. The general rule is to ensure the inverter's maximum capacity closely matches or slightly exceeds the solar panel array's peak power output.

What size inverter do I Need?

Inverters come in different sizes starting from as little as 125 watts. The typical inverter sizes used for residential and commercial applications are between 1 and 10kW with 3 and 5kW sizes being the most common. With such an array of options, how do you find the right size for you?

An inverter works best when close to its capacity.

How much wattage does a solar inverter need?

A good rule of thumb is to multiply the total wattage of your solar panels by 1.25 to account for inefficiencies and potential load spikes. For example, if you have a 5 kW solar system, you would need an inverter rated for at least 6.25 kW. Q: What happens if my inverter is too small for my solar panel system?

.

Why should you choose a solar inverter size?

Inverters play a vital role in converting the direct current (DC) generated by your solar panels into usable alternating current (AC) for your home. Selecting the proper inverter size ensures that your solar system operates at its full potential, ultimately impacting energy savings and system longevity.



How efficient is a solar inverter?

As long as the input from the panels falls within the range of the window, the inverter can be considered to be operating optimally. In the graph below, the red line represents an average inverter efficiency and the green arrow represents the power output from your solar panels.

How much solar power can a 5kw inverter produce?

Under the Clean Energy Council rules for accredited installers, the solar panel capacity can only exceed the inverter capacity by 33%. That means for a typical 5kW inverter you can go up to a maximum of 6.6kW of solar panel output within the rules.



How big an inverter should I use for a 250w solar panel



What Size Solar Inverter Do I Need? Experts Break It ...

What Size Solar Inverter Do I Need? A solar inverter should closely match your solar system's output in kW--typically within 80% to 120% of your ...

What size inverter is best for solar panels?

Choosing the right inverter is essential to ensure the efficient operation of your solar power system. Different power solar panels need to ...



How Many Solar Panels Do You Need for a 3.5 KVA ...

As solar energy becomes more accessible and affordable, more people are opting to install solar power systems at home and in businesses. If ...

Ultimate Solar Panel Wiring Guide: Selection, ...

Delve into the intricacies of selecting, installing, and optimizing solar panel performance. Learn



about wiring installations, series, parallel series-parallel, ...



[250 Watt Solar Panel - 10 Best Reviewed & Rated](#)

Are you looking for the best 250 watt solar panel with the best features? Check out our list of the 10 best 250 watt solar panels.

What Size Inverter Do I Need To Run A TV And Lights?

An inverter is a crucial component of any solar power system. But before you jump into purchasing one, you need to ensure you size it correctly. ...



[How To Size A Solar Inverter in 3 Easy Steps](#)

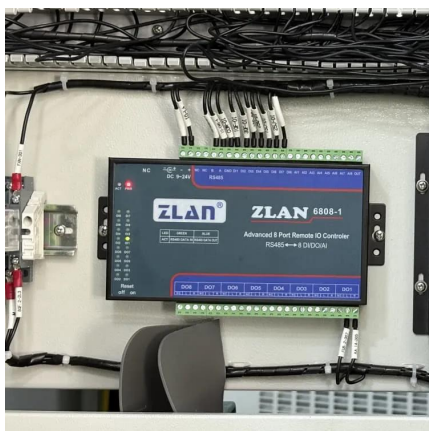
In this guide, we share 3 easy steps on how to size a solar inverter correctly. We explain the key concepts that determine solar inverter sizing including your power needs, the type and number ...





[How To Size A Solar Inverter in 3 Easy Steps](#)

In this guide, we share 3 easy steps on how to size a solar inverter correctly. We explain the key concepts that determine solar inverter sizing including your ...



How to Size MPPT Solar Charge Controller for Your ...

Table of Contents How to size mppt solar charge controller is one of the most important steps when building a solar power system. The solar charge ...

Solar Panel Size Calculator

Use our solar panel size calculator to find out the ideal solar panel size to charge your lead acid or lithium battery of any capacity and voltage. ...



What Size Solar Inverter Do I Need? Experts Break It Down

What Size Solar Inverter Do I Need? A solar inverter should closely match your solar system's output in kW--typically within 80% to 120% of your total panel capacity.



[Inverter Size Calculator - self2solar](#)

Choosing the right inverter size is essential for a reliable and efficient solar power system. Our Inverter Size Calculator simplifies this task by accurately estimating the ...



How Many Batteries Do I Need For a 250W Solar Panel?

250W Solar Panel Battery Requirement Calculation The formula is: total solar panel watts per day / battery volts = battery size in amp hours. Most 250W solar panels are designed to work with ...

How Many Solar Panels Do I Need To Power a House ...

One of the first questions homeowners ask when going solar is "How many solar panels do I need to power my home?" The goal for any solar project should be ...





What Size Inverter Do I Need for a Solar Panel System?

To help you choose the right size solar inverter and matching battery, a solar inverter size selection comparison table is provided below. This table will help you quickly ...

Solar Inverter Sizing to Improve Solar Panel Efficiency

To calculate the required capacity for your solar inverter, sum up the total wattage of your solar panels and adjust based on expected system efficiency, shading, and the specific ...



How to Choose the Right Size Solar Inverter: Step-by-Step with ...

This guide walks you through calculating inverter size based on panel capacity, power usage, and safety margins. We use real examples from installations in Texas and ...

What Size Inverter Do I Need for a Solar Panel System?

To help you choose the right size solar inverter and matching battery, a solar inverter size selection comparison table is provided below. ...



Solar Inverter Sizing to Improve Solar Panel Efficiency

To calculate the required capacity for your solar inverter, sum up the total wattage of your solar panels and adjust based on expected system ...



What size charge controller for 200w, 250w, 300w, 400w, 500w, ...

The rule of thumb is that different solar panels use different charge controllers due to the difference in size. For instance, a solar charge controller for a 200w is smaller than a ...



What size inverter is best for solar panels?

Choosing the right inverter is essential to ensure the efficient operation of your solar power system. Different power solar panels need to choose the right inverter based on ...





250 Watt Solar Panel: Is It Still One Of the Right ...

Have you ever considered using solar power for your home? If so, you may have come across 250-watt solar panels in your research. 250W ...



Solar Panel Inverter Size Calculator: Know What You ...

Planning to install solar panels? You'll need a solar inverter. ...

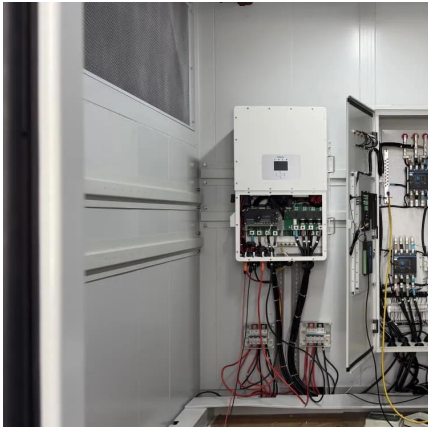
[What Size Inverter Do I Need for Solar Panels?](#)

Not sure what size inverter you need for your solar panels? Read this guide to learn how to determine the right inverter size based on your system size, energy consumption, and ...



[250-watt Solar Panels: What to Know \(2025\)](#)

250-watt solar panels are great for DIY solar installations, but they may be a little small if you want to run your entire home off solar energy.



Size Fuses or Circuit Breakers for a Solar Power System

When selecting fuses or circuit breakers, you need to check the rated short circuit current (Isc) value for the panel you are using. The Isc is the maximum current ...



What Size Solar Panel To Charge 100Ah Battery? (Calculator

Here is how this solar panel size calculator for 100Ah batteries works: Let's say that you have a 100Ah 24V deep cycle battery. You want the solar panel to charge it in 5 peak sun hours ...

[Inverter Size Calculator - self2solar](#)

Choosing the right inverter size is essential for a reliable and efficient solar power system. Our Inverter Size Calculator simplifies this task ...



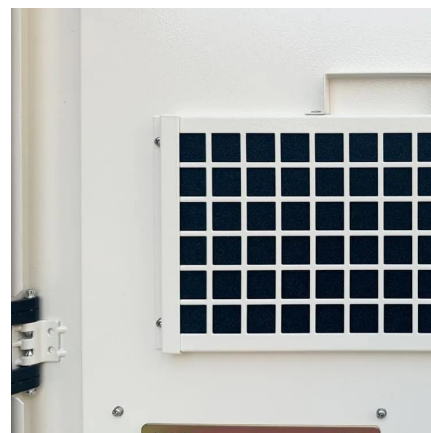


Solar Panel Inverter Size Calculator: Know What You Need , Angi

Planning to install solar panels? You'll need a solar inverter. Follow this guide to calculate the best solar panel inverter size for your system.

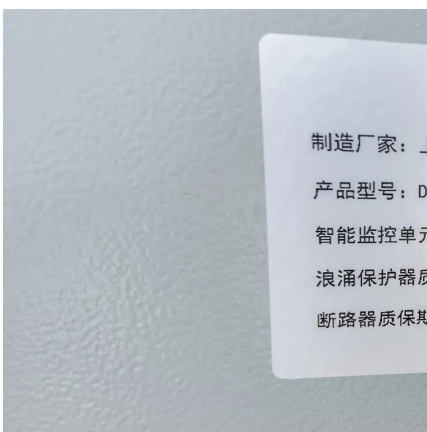
[What size inverter do I need for solar panels](#)

In this post, you will learn how to determine the right inverter size tailored for your specific solar setup. Power Requirements: Assess the total wattage of all appliances you ...



Guide to Solar Panel Sizes & Dimensions (August 2025)

Solar panel size refers to the total amount of power a solar panel can generate over a period of time Solar panel dimensions refers to the ...



[What size inverter do I need for solar panels](#)

In this post, you will learn how to determine the right inverter size tailored for your specific solar setup. Power Requirements: Assess the total ...



Contact Us

For catalog requests, pricing, or partnerships, please visit:
<https://www.talbert.co.za>