

How big an inverter should I use for a 200ah lithium battery





Overview

You can run an inverter rated between 1500W and 2400W off a 200Ah lithium battery depending on voltage and usage. Typically, a 12V 200Ah battery supports up to about 2400W, while higher voltage configurations like 24V or 48V allow larger inverter sizes. How do I choose the right inverter size for my 200Ah lithium battery?

When it comes to choosing the right inverter size for your 200Ah lithium battery, there are a few factors you'll need to consider. The first is the power needs of the devices you plan on running off the inverter. Take into account their wattage requirements and how many devices will be connected at once.

How much battery does a 2000W inverter need?

A 2000W inverter requires a 200ah battery to run at full load for 20-25 minutes and 600ah to run for an hour. If you want to recharge the battery at 50%, the battery sizes have to be doubled to 400ah and 1200ah respectively. The formula is $\text{hours needed to run} \times \text{watts} / \text{battery voltage} = \text{battery inverter size}$.

How to choose a lithium battery for a 2000 watt inverter?

When choosing a lithium battery for a 2000 watt inverter, consider the battery's amp hour (Ah) rating and voltage. A battery with a higher Ah rating will store more energy and last longer. A battery with a higher voltage will provide more power to the inverter.

How many watts can a 200Ah lithium battery run?

On the other hand, the Enerdrive B-TEC 200Ah & 300Ah battery has the ability to deliver a maximum discharge of 200A (up to a 2000W inverter). So, with this information at hand, a common 100Ah-150Ah lithium battery of this type can deliver enough energy to operate a maximum of a 1000w inverter.

How much battery do I need to run a 3000-watt inverter?



You would need around 24v 150Ah Lithium or 24v 300Ah Lead-acid Battery to run a 3000-watt inverter for 1 hour at its full capacity Here's a battery size chart for any size inverter with 1 hour of load runtime Note! The input voltage of the inverter should match the battery voltage.

What voltage should a 12V inverter run on?

The input voltage of the inverter should match the battery voltage. (For example 12v battery for 12v inverter, 24v battery for 24v inverter and 48v battery for 48v inverter Summary What Will An Inverter Run & For How Long?



How big an inverter should I use for a 200ah lithium battery



What Size Inverter Do I Need for a 200Ah Lithium Battery

For a 12V 200Ah lithium battery, a 1500W to 2000W inverter is recommended to ensure efficient performance with headroom for surge loads. ...

[What Size Inverter Is Best for a 200Ah Battery?](#)

A 200Ah battery typically pairs with a 1,500W-3,000W inverter, depending on power needs. For continuous loads, select an inverter with 1.5x your calculated wattage to avoid overloads. Pure ...



What Size Charger do I Need for a 200Ah Lithium ...

The appropriate charger size for a 200Ah lithium battery To determine the appropriate charger size for a 200Ah lithium battery, it is ...

Calculate Battery Size For Any Size Inverter (Using Our Calculator)

Inverter capacity (W)*Runtime (hrs)/solar system voltage = Battery Size*1.15. Multiply the result



by 2 for lead-acid type battery, for lithium battery type it would stay the ...



What Size Inverter Do I Need for a 200Ah Lithium ...

Given this energy capacity, a 200Ah lithium battery can effectively support an inverter rated for approximately 1920 watts under optimal ...

Choosing the Best Inverter Size for a 200Ah Lithium Battery

When setting up an off-grid, solar, RV, or backup power system, one of the most critical decisions you'll make is choosing the best inverter size for your 200Ah lithium battery.



What Size Inverter Can I Run Off a 200Ah Lithium Battery?

You can run an inverter rated between 1500W and 2400W off a 200Ah lithium battery depending on voltage and usage. Typically, a 12V 200Ah battery supports up to about ...



How to Calculate Battery Size for Inverters of Any Size

Learn how to calculate how much battery power you need to get your inverter up and running with The Inverter Store's handy how-to guide. It works for any size.



[What Size Inverter Do I Need for a 200AH Battery?](#)

Choosing the right inverter size for a 200AH battery is crucial for ensuring optimal performance and efficiency. This section provides detailed insights into how to calculate the ...

Choosing the Right Inverter Size for a 200Ah Lithium Battery

The ideal inverter size for a 200Ah lithium battery system depends on the voltage of the battery. For a typical 12V system, an inverter size between 1000W and 2000W is generally ...



What size inverter do you need for a 100ah battery?

What size inverter for a 100Ah battery? For appliances that use a relatively low amount of power, such as laptops, lights, TVs, and small fridges, ...



What Size Solar Panel To Charge 200Ah Battery?

Use our solar panel size calculator to find out what size solar panel you need to charge 200ah lead acid or lithium battery.



What Size Inverter Do I Need for a 200Ah Lithium Battery?

Given this energy capacity, a 200Ah lithium battery can effectively support an inverter rated for approximately 1920 watts under optimal conditions. However, practical ...

Which Inverter is Suitable for a 200Ah Battery?

Choosing the right inverter for a 200Ah battery depends on several factors, including the load size, runtime, and efficiency. The 200Ah battery is large enough to handle ...





How to Calculate the Right Inverter Battery Capacity ...

Learn how to calculate the right inverter battery capacity for your needs with a simple formula. Understand power requirements, efficiency ...

Calculate Battery Size For Any Size Inverter (Using Our Calculator)

Using an inverter that is too large or too small for your 200Ah lithium battery can lead to inefficiency, overheating, system shutdowns, or battery ...



Choosing the Best Inverter Size for a 200Ah Lithium Battery

Using an inverter that is too large or too small for your 200Ah lithium battery can lead to inefficiency, overheating, system shutdowns, or battery damage. Ensuring that your ...

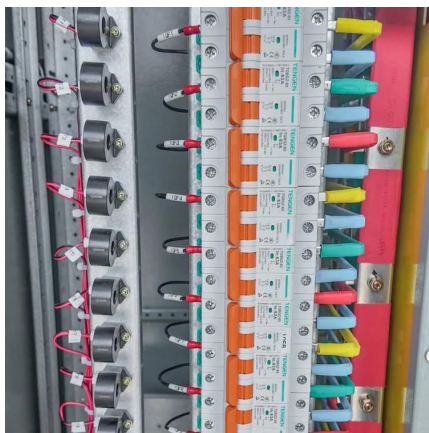
Best Inverter for 200Ah Battery: A Complete Guide 2025

Find the best inverter for your 200Ah battery setup. Compare top models, get expert tips, and shop reliable inverters for RVs, homes, and off-grid use.



What size of 1000W inverter is good for a 12 volt 200Ah battery?

The matching of inverter and battery is particularly important in many scenarios, especially when you plan to use a 12 volt 200Ah battery to power the inverter. How to choose ...



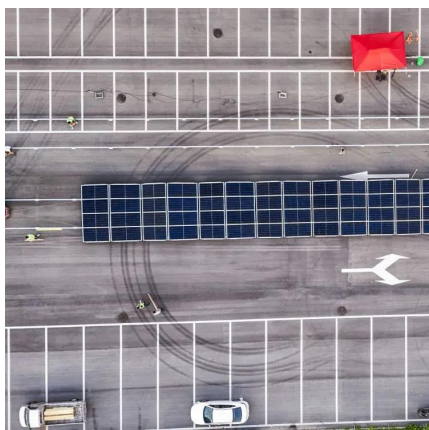
[The Only Battery Size Chart You'll Ever Need](#)

This article will help you understand the different battery sizes and provide you with a complete battery size chart.



Fuse size from battery to inverter

I have 2 200ah batteries wired in parallel for 400ah total. Each have a 200a bms. I want to install a 2200 psw inverter. My trailer is 30a service which I have a fuse from battery to ...





Which inverter is best for 200ah battery?

Which inverter is best for 200ah battery?
Selecting the right inverter for a 200Ah battery is critical for optimizing power backup systems, ensuring seamless performance, and enhancing energy ...



How Do I Match My Battery Size to My Inverter?

A general rule is that for every 1000 watts of inverter capacity, you should have at least 100Ah of battery capacity. For instance, if you have a 2000W inverter, you should ideally have at least ...

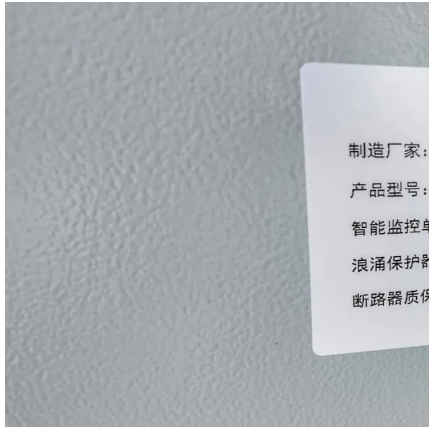
What Size Lithium Battery Is Needed for a 2000W Inverter

What Size Lithium Battery Is Needed for a 2000W Inverter
Short A 2000W inverter typically requires a 200Ah lithium battery (24V) or 100Ah (48V) for 1 hour of runtime. For longer use, ...



What Size Inverter Do I Need for a 200Ah Lithium Battery

For a 12V 200Ah lithium battery, a 1500W to 2000W inverter is recommended to ensure efficient performance with headroom for surge loads. Proper sizing enhances system ...



Can an Inverter Be Too Big for Your Battery System?

Match the inverter's continuous wattage rating to the battery's discharge capacity. For a 12V 200Ah battery (2.4kWh), a 2000W inverter is ideal. Formula: Inverter Wattage \leq (Battery ...



What Size of Inverter Is Good for a 200Ah Battery?

Choosing the right size inverter for a 200Ah battery is crucial for ensuring efficient power delivery and preventing system overloads. Typically, an inverter rated between 1000W ...

Contact Us

For catalog requests, pricing, or partnerships, please visit:
<https://www.talbert.co.za>