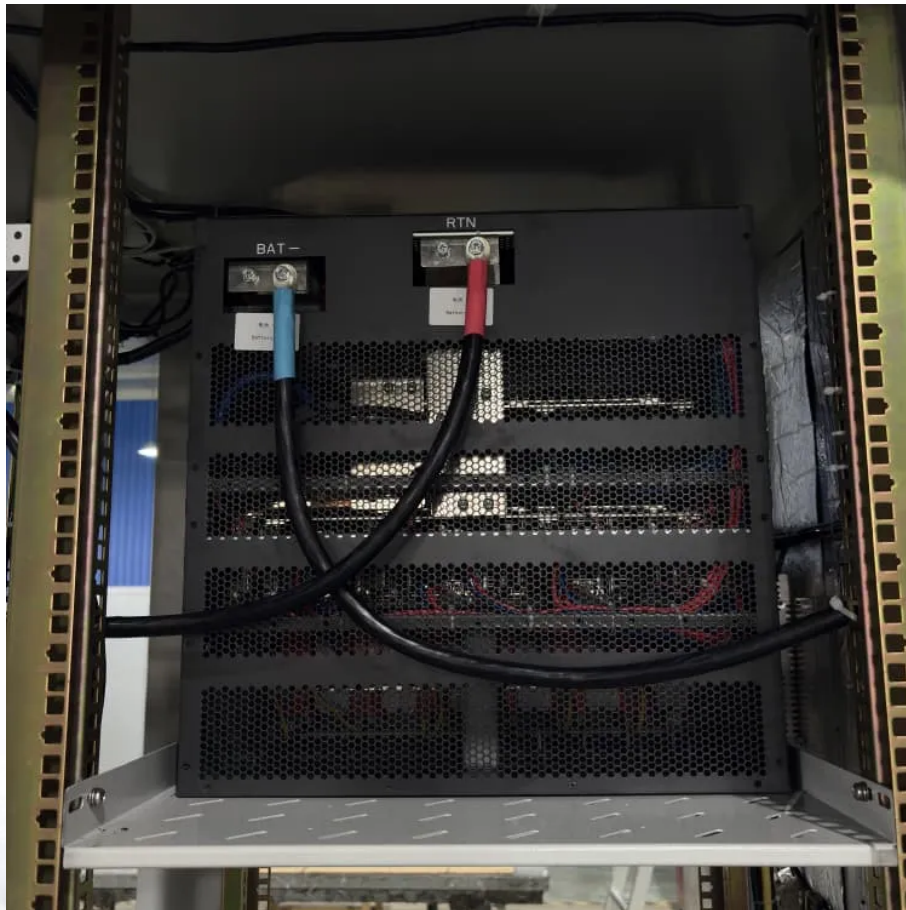


How big an inverter should I use for a 120kw photovoltaic system





Overview

Generally, it's recommended to size the inverter to 80-100% of the DC system's rated capacity. Before determine the inverter size, the most important thing is to calculate your average daily power consumption (kWh) and calculate your solar panel array size to match your power consumption. What size solar inverter do I Need?

A 4.5 kW array (or ten 450-watt solar panels) would just about cover your consumption. The type of solar panels you choose can also impact the size of the inverter you need. Different types of solar panels have different wattage ratings and efficiency levels. The three main types of solar panels are monocrystalline, polycrystalline, and thin film.

How do I choose a solar inverter?

When designing a solar installation, and selecting the inverter, we must consider how much DC power will be produced by the solar array and how much AC power the inverter is able to output (its power rating).

Why should you choose a solar inverter size?

Inverters play a vital role in converting the direct current (DC) generated by your solar panels into usable alternating current (AC) for your home. Selecting the proper inverter size ensures that your solar system operates at its full potential, ultimately impacting energy savings and system longevity.

Should your inverter size match your solar panel size?

Match your inverter to your lifestyle, not just your roof. If you're running a fridge, home office, and PS5 all day, size accordingly. If you're barely home, go leaner. Here's the cheat code: your inverter size should usually match your solar panel system's size in kilowatts.

How many solar panels can a 5kw inverter handle?

The inverter's size must match the total wattage of your solar panels.



Choosing the right inverter size is crucial for your system's best performance. When asking how many panels a 5kW inverter can handle, the answer is about 16-20 standard 300-watt panels. This is because a 5kW inverter can manage a total capacity of 6-7.5 kW.

How many kW can a solar inverter generate?

Total capacity = $20 \times 500 = 10,000$ watts or 10 kW The industry standard suggests that the inverter's capacity should be between 80% to 125% of the solar panels' capacity. For example, if your panels generate 10 kW: Minimum inverter size = $10,000 \times 0.8 = 8$ kW Maximum inverter size = $10,000 \times 1.25 = 12.5$ kW



How big an inverter should I use for a 120kw photovoltaic system



[Inverter Size Calculator - self2solar](#)

Choosing the right inverter size is essential for a reliable and efficient solar power system. Our Inverter Size Calculator simplifies this task by accurately estimating the ...

Grid Tied Solar System Sizing Calculator , AltE Store

The altE Grid Tied Solar System Sizing Calculator is designed to help you size a solar panel system for on-grid use. Simply go through the steps listed below, and you will get an idea of ...



Solar Inverter Sizing Guide for Maximum Efficiency , Mingch

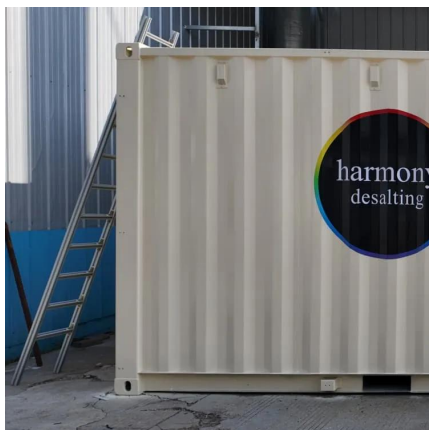
This article explains how to calculate your inverter size, what affects it, and how to avoid costly mistakes, especially when using high-efficiency solutions like MINGCH Electrical's ...

[What size inverter do I need for solar panels](#)

Selecting the proper inverter size ensures that your solar system operates at its full potential,



ultimately impacting energy savings and system ...

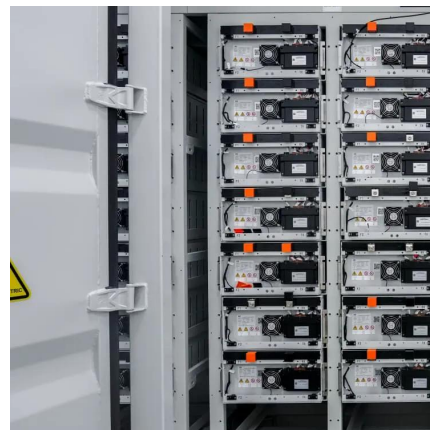


[How To Size A Solar Inverter in 3 Easy Steps](#)

In this guide, we share 3 easy steps on how to size a solar inverter correctly. We explain the key concepts that determine solar inverter sizing including your power needs, the type and number ...

Solar Inverter Sizing Guide for Maximum Efficiency

This article explains how to calculate your inverter size, what affects it, and how to avoid costly mistakes, especially when using high ...



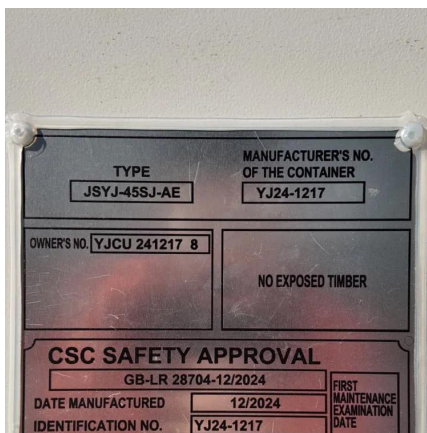
Inverter String Sizing Guide: What You Need to Know

Learn everything you need to know about solar inverters with our ultimate string sizing guide - optimize and maximize your solar energy system today!



[how big an inverter do i need for 10kw solar](#)

How Big of an Inverter Do I Need for a 10 kW Solar System? Introduction When installing a 10 kW solar system, it is essential to choose the right size inverter ...



Choosing and Sizing Batteries, Charge Controllers ...

In general the system should be big enough to supply all your energy needs for a few cloudy days but still small enough to be charged by your solar panels. ...

[How to size and select a solar inverter](#)

Learn how to size and select an appropriate inverter for your solar electric system. Timestamps: 0:06 Intro 0:38 What is an inverter? 1:01 --- Electrical cur



How Big Of an Inverter Can My Car Handle , Expert Guide

The inverter is the device that converts power from battery-powered electronics to the voltage used by your car (120 volts). The greater wattage an inverter can handle, the more devices ...



Solar inverter sizing: Choose the right size inverter

Inverters work most efficiently when operating near their maximum capacity and are typically sized to be roughly the same size as your solar panels. Inverters ...



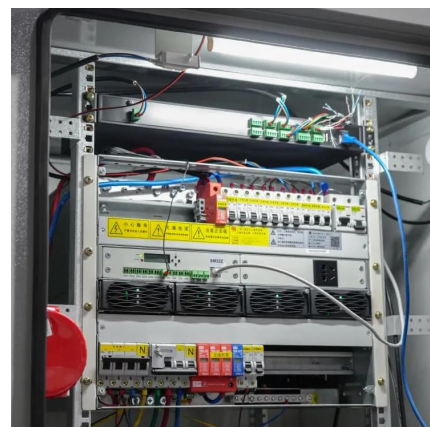
[Frequently Asked Questions about Inverters](#)

Frequently Asked Questions about Inverters How much battery capacity do I need with an inverter? As a rule of thumb, the minimum required battery capacity for a 12-volt system is ...



What Size Inverter Do I Need for a 100 Watt Solar Panel

Wondering what size inverter you need for a 100 watt solar panel? Here's how to find the right inverter and calculate its size.





To calculate the ideal inverter size for your solar PV system, you should consider the total wattage of your solar panels and the specific conditions of your installation site. The general rule is to ...

[calculate inverter size for solar + Sizing Formula](#)

Common sizes range between 1kW and upwards over 10kW. In order to accurately size your inverter, here is a very simple formula: ...



A Guide to Solar Inverters: How They Work & How to ...

Learn what a solar inverter is, how it works, how different types stack up, and how to choose which kind of inverter for your solar project.

[Inverter Size Calculator - self2solar](#)

Choosing the right inverter size is essential for a reliable and efficient solar power system. Our Inverter Size Calculator simplifies this task ...



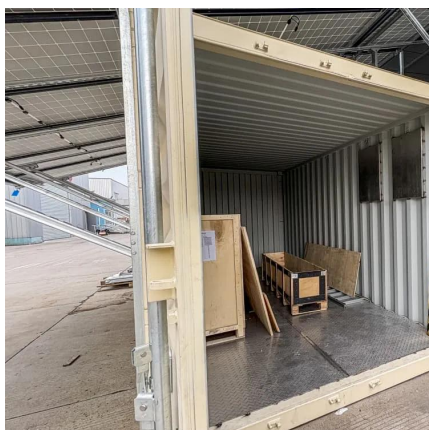
[Solar Panel Inverter Size Calculator](#)

For a 7kW solar system, you'll need an inverter of at least 7.5-8 kW. This size ensures it can handle your solar array's full output. It prevents power clipping and keeps ...



Solar inverter size: Calculate the right size for your ...

Discover why solar inverter sizing is important for efficiency and performance. Learn how to calculate the ideal inverter size for your solar panels, battery, ...



What Size Solar Inverter Do I Need? Experts Break It ...

But before you start soaking up the sun, you'll need the right inverter to match your system. This guide breaks down what size solar ...



[Solar Inverter Sizing Calculator: Important Guide](#)

This comprehensive guide will walk you through solar inverter sizing, explain its importance, and help you understand how to use a solar inverter sizing calculator effectively.



[calculate inverter size for solar + Sizing Formula](#)

Common sizes range between 1kW and upwards over 10kW. In order to accurately size your inverter, here is a very simple formula:
projectiles. Inverter Size = Total Solar Panel ...

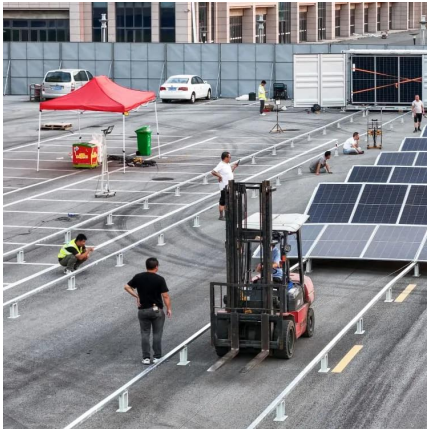
Solar inverter size: Calculate the right size for your inverter

Inverters work most efficiently when operating near their maximum capacity and are typically sized to be roughly the same size as your solar panels. Inverters are usually sized lower than ...



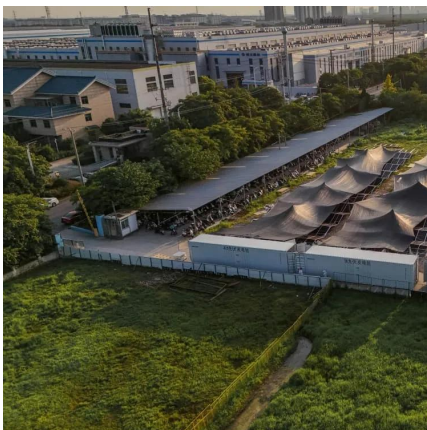
[What size inverter do I need for solar panels](#)

Selecting the proper inverter size ensures that your solar system operates at its full potential, ultimately impacting energy savings and system longevity. In this post, you will learn ...



120kW Solar System Information - Facts & Figures

120kW Solar System Information - Facts & Figures. Everything you ever wanted to know about this solar system size including production estimates.

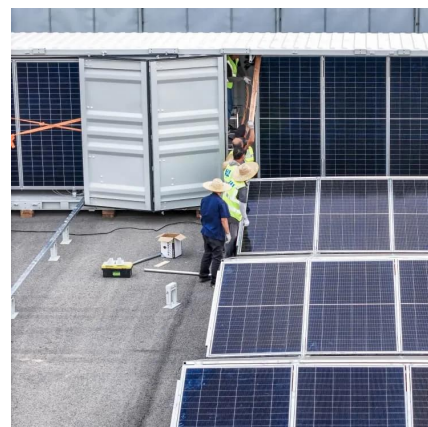


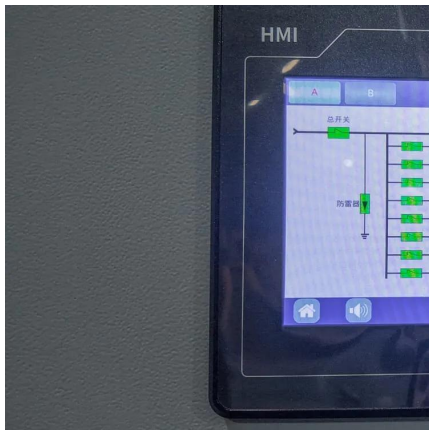
How to pick the right Inverter: Guide from Naked Solar

Both of which may affect your choice of inverter. A good quality solar energy inverter is an essential part of your panel set up. it's an intelligent piece of kit ...

Choosing the Right Size Inverter for Your Solar ...

What size solar inverters do I need for my system? Solar inverters come in a range of different sizes. Like solar panels, inverters are rated in watts. ...





Solar inverter sizing: Choose the right size inverter

When designing a solar installation, and selecting the inverter, we must consider how much DC power will be produced by the solar array and how much AC power the inverter is able to ...

[Solar Inverter Sizing Calculator: Important Guide](#)

This comprehensive guide will walk you through solar inverter sizing, explain its importance, and help you understand how to use a solar ...



What Size Solar Inverter Do I Need? Experts Break It Down

But before you start soaking up the sun, you'll need the right inverter to match your system. This guide breaks down what size solar inverter you actually need--so your setup ...

Contact Us

For catalog requests, pricing, or partnerships, please visit:
<https://www.talbert.co.za>