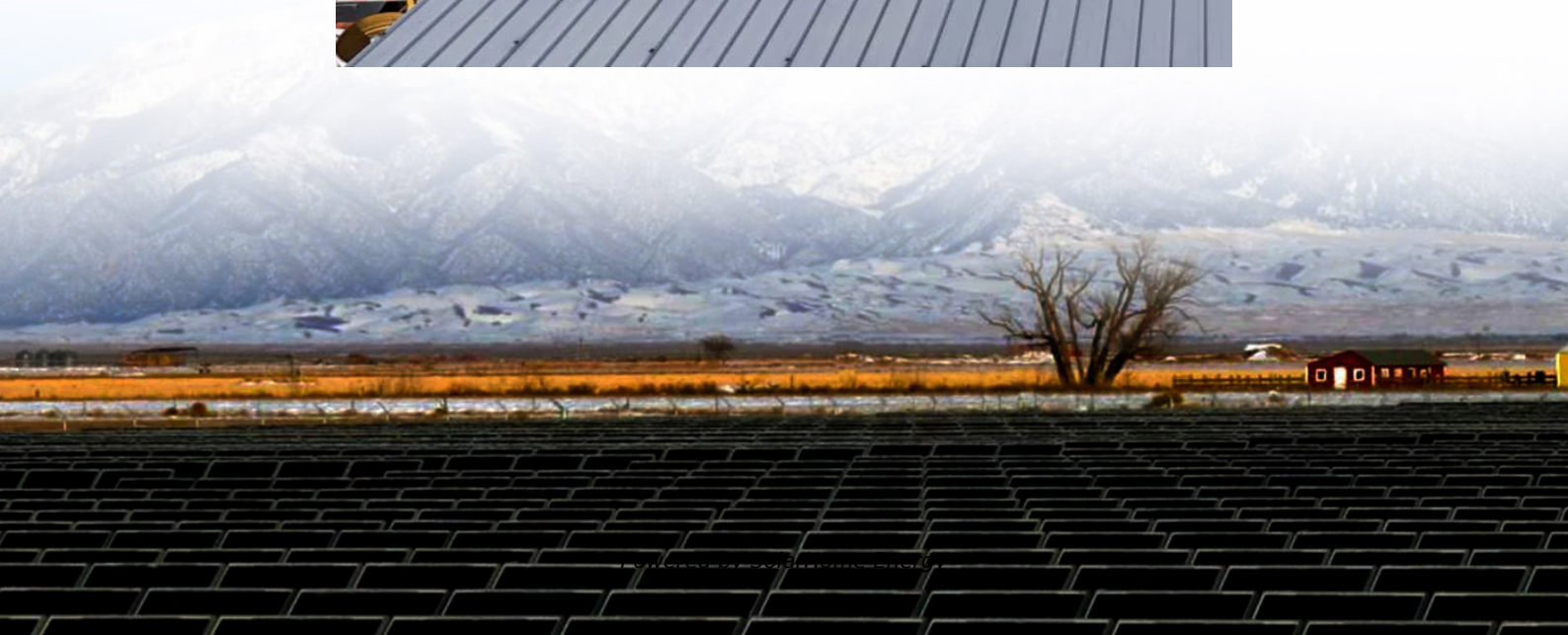


How big an inverter can 24v drive





Overview

Before we go any further, we highly recommend that you choose a pure sine wave inverter. This type of inverter delivers high-quality electricity, similar to your utility company. This way, none of your appliance.

How to size an inverter?

If you want to know how to size an inverter, the answer is simple. All you have to do is find out how much power your devices need. Then, do some simple math to determine how much more power you need to compensate for inverter losses and headroom.

What are the different solar inverter sizes?

Solar generators range in size from small generators for short camping trips to large off-grid power systems for a boat or house. Consequently, inverter sizes vary greatly. During our research, we discovered that most inverters range in size from 300 watts up to over 3000 watts. In this article, we guide you through the different inverter sizes.

How much power does an inverter need?

The continuous power requirement is actually 2250 but when sizing an inverter, you have to plan for the start up so the inverter can handle it. Third, you need to decide how long you want to run 2250 watts. Let's say you would like to power these items for an eight-hour period.

What is the power output of an inverter?

Power output is the maximum continuous power the inverter can supply to all the loads on the system. Exceeding the power rating by having a larger load (too many appliances) than the inverter can handle will cause it to shut down. The power output of a 3 kW inverter for example is 3000 watts (3 kW).

How to choose a power inverter?

Second, select an inverter. For this example, you will need a power inverter capable of handling 4500 watts. The continuous power requirement is actually



2250 but when sizing an inverter, you have to plan for the start up so the inverter can handle it. Third, you need to decide how long you want to run 2250 watts.

How much power does a 400 watt inverter have?

When you connect your 400-watt inverter into the car's lighter port, you will be able to enjoy about 140-170 watts of power (12 volts x 15 amps). "Magic" happens when you connect your inverter directly! This way inverter will give you its full power!



How big an inverter can 24v drive



What Inverter Size Do I Need to Run a Laptop?

A laptop can run off an inverter with enough power. Use this simple guide to find the right inverter for your computer.

What Size Inverter Do You Need for Your Home? , Renogy US

To calculate or determine what size inverter can meet your energy requirements, you need to calculate the total power of all the appliances you want to run with the inverter. Here is how ...



A Guide to Solar Inverters: How They Work & How to ...

Learn what a solar inverter is, how it works, how different types stack up, and how to choose which kind of inverter for your solar project.

Find the Right Inverter Size: How Big An Inverter Do ...

An inverter is a device that turns the power from a 12 volt DC battery, like the one in your car or



truck, into the 120 volt AC power that runs ...

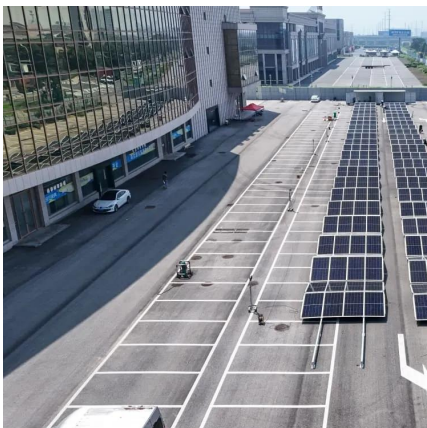


[Inverter Size Chat: What Size Inverter Do I Need?](#)

Trying to work out what size inverter you need? If you purchase an inverter without enough power, you won't be able to run all your appliances, tools, and ...

[What size inverter do I need for a refrigerator?](#)

You could run most refrigerators using a 1500-watt pure sine wave inverter. Inverters of this size and type can consistently supply 1500 Watts of ...



[How To Size An Inverter for Solar and Off Grid](#)

If you want to know how to size an inverter, the answer is simple. All you have to do is find out how much power your devices need. Then, do ...



[How To Size An Inverter for Solar and Off Grid](#)

If you want to know how to size an inverter, the answer is simple. All you have to do is find out how much power your devices need. Then, do some simple math to determine how ...

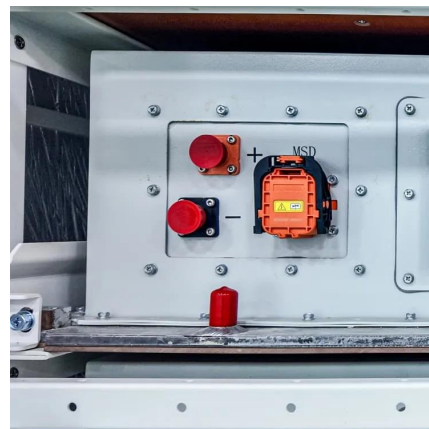


Can an Inverter Be Too Big for Your Battery System?

How to Calculate the Right Inverter Size for Your Battery Match the inverter's continuous wattage rating to the battery's discharge capacity. For a 12V 200Ah battery (2.4kWh), a 2000W inverter ...

Find the Right Inverter Size: How Big An Inverter Do ...

Before you buy a power inverter for your car, you need to know what size to purchase. Here's how to estimate your power needs.



[What Size Inverter do I Need? \[with Examples\]](#)

Sizing an inverter is very simple, as long as you know how much power do you exactly need. If you think that at some point you will be plugging in more ...



[What Size Inverter do I Need? \[with Examples\]](#)

Sizing an inverter is very simple, as long as you know how much power do you exactly need. If you think that at some point you will be plugging in more devices, consider that as well and ...



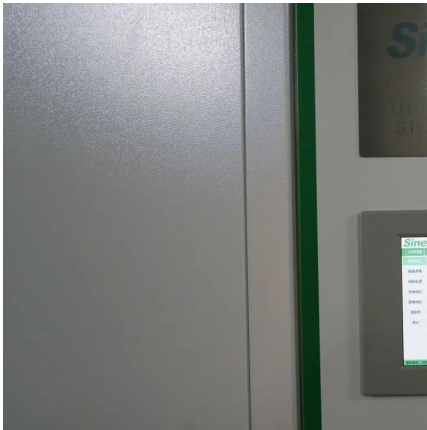
[The Only Inverter Size Chart You'll Ever Need](#)

We have created a comprehensive inverter size chart to help you select the correct inverter to power your appliances.

What Size Power Inverter Do I Need To Run A Mini ...

Appliances with a motor can easily use three to seven times their running wattage when they cycle on. What happens when you connect a 3000W mini-fridge to ...





Find the Right Inverter Size: How Big An Inverter Do You need?

Before you buy a power inverter for your car, you need to know what size to purchase. Here's how to estimate your power needs.

[How To Size A Solar Inverter in 3 Easy Steps](#)

Choose an inverter that has a surge watt rating equal to or greater than this value. As for voltage drop, check the wire length between your solar panels and the ...



How Many Batteries Do You Need for a 2000W Inverter?

In contrast, with a 24V battery, the inverter would draw about 90.5 amps ($2174W \div 24V = 90.5$ amps). Step3 - Determine How Big of a Battery ...

How Long Does A 24 volt Battery Last? (incl. Calculator)

To calculate how long your 24v battery will last on an inverter, use our previously mentioned calculator. Select "YES" for "Load Connected through an Inverter," and enter your ...



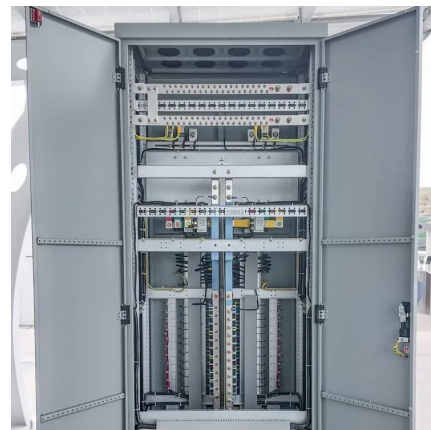
What is the max size inverter (wattage) I could get for my 12v

You can get any size you want. 3000w is the largest most people would run on a 12v system. If you are asking "how big a load can I run off an inverter on my 230Ah battery" that depends on ...



Find the Ideal Inverter Size Using our Inverter Run-time Calculator

To figure out how long your 12 Volt lead-acid battery can supply power to run a space heater when grid power is not available you can use our easy-to-use inverter run-time ...



Go Power! Inverter Sizing Guide Power Solution , Go ...

When deciding on pure, modified, true or quasi sine wave inverters, it is important to select a dependable system that is appropriate for any power needs you ...



Inverter Size Calculator

Learn how to calculate the required size of an inverter with our in-depth guide. We provide a handy formula, examples, and answers to common questions to help you make the right ...



Can Air Conditioner Run On Inverter? , Smart AC ...

How Big of an Inverter Do I Need to Run an Air Conditioner? Assuming you would like to know how to size an inverter to run an air ...

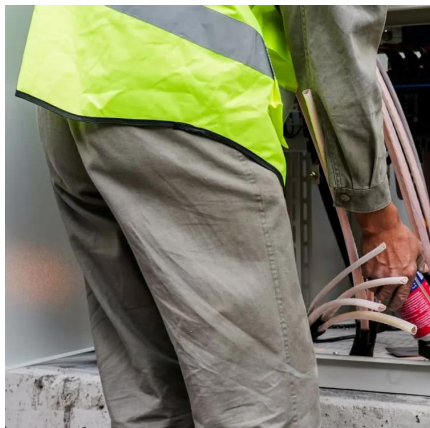
[How To Size A Solar Inverter in 3 Easy Steps](#)

Choose an inverter that has a surge watt rating equal to or greater than this value. As for voltage drop, check the wire length between your solar panels and the batteries. If the wire length is ...



[Inverter Specifications and Data Sheet](#)

The article provides an overview of inverter functions, key specifications, and common features found in inverter systems, along with an example of power ...



Find the Ideal Inverter Size Using our Inverter Run ...

To figure out how long your 12 Volt lead-acid battery can supply power to run a space heater when grid power is not available you can use our ...



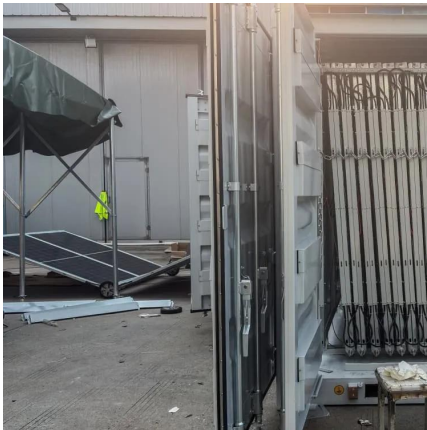
How Many Batteries Do You Need For a 2000W Inverter?

2000W inverters depend on batteries for power, so using the right size is essential. Get insights on how many batteries you will need.

What Size Inverter Do I Need?

Finding the proper inverter size for your needs is as simple as adding together the necessary wattages of the items that you're looking to power.





Inverter Size Calculator , Find Your Perfect Power Match

Standard 12v models top out around 3000w (24v/48v ~ 4000w). To proceed: Upgrade to a higher-voltage system (24 V/48 V) for a larger inverter. Consider a higher ...

Contact Us

For catalog requests, pricing, or partnerships, please visit:
<https://www.talbert.co.za>