

# How big a solar panel should I use for a 1kW inverter





## Overview

---

The size of the inverter will be determined by the watts of your solar panels. A general rule of thumb is that you will need a 1,000 watt (1kW) inverter for every 1 kilowatt (kW) worth of solar panels. So, if you have 4 kW of solar panels, you would need at least a 4kW inverter. What size solar inverter do I Need?

A 4.5 kW array (or ten 450-watt solar panels) would just about cover your consumption. The type of solar panels you choose can also impact the size of the inverter you need. Different types of solar panels have different wattage ratings and efficiency levels. The three main types of solar panels are monocrystalline, polycrystalline, and thin film.

Should your inverter size match your solar panel size?

Match your inverter to your lifestyle, not just your roof. If you're running a fridge, home office, and PS5 all day, size accordingly. If you're barely home, go leaner. Here's the cheat code: your inverter size should usually match your solar panel system's size in kilowatts.

What is a solar inverter sizing calculator?

A solar inverter sizing calculator is a tool used to determine the appropriate size of a solar inverter for your solar power system based on the total power consumption of connected appliances and the size of your solar panel array. It ensures the inverter can handle the peak loads efficiently.

How many kW can a solar inverter generate?

Total capacity =  $20 \times 500 = 10,000$  watts or 10 kW The industry standard suggests that the inverter's capacity should be between 80% to 125% of the solar panels' capacity. For example, if your panels generate 10 kW: Minimum inverter size =  $10,000 \times 0.8 = 8$  kW Maximum inverter size =  $10,000 \times 1.25 = 12.5$  kW.

How efficient is a solar inverter?



As long as the input from the panels falls within the range of the window, the inverter can be considered to be operating optimally. In the graph below, the red line represents an average inverter efficiency and the green arrow represents the power output from your solar panels.

How do you calculate wattage for a solar inverter?

**Calculate Solar Panel Output** Determine how many watts and the number of solar panels you will be installing. For example, assume you have eight 350W panels, then your total wattage would be ( $8 \times 350W = 2800W$ ) or 2.8kW. This number will become important in the inverter sizing equation.



## How big a solar panel should I use for a 1kW inverter

---



### [calculate inverter size for solar + Sizing Formula](#)

Common sizes range between 1kW and upwards over 10kW. In order to accurately size your inverter, here is a very simple formula: ...

### Size your solar system

On this page System size refers to the total capacity of the panels Inverter sizing The available sunny roof area Your electricity usage Electricity pricing The regional climate and annual ...



### Solar Panel Inverter Size Calculator: Know What You ...

Solar inverters come in different sizes, and you'll need to check the output of your solar energy system to find the perfect match. This guide can ...

### Understanding Solar Inverter Sizes: What Size Do ...

Did you know solar inverters come in different sizes? Learn why size is important and which size





inverter you need for your solar PV system here.



## Solar Inverter Sizing to Improve Solar Panel Efficiency

To calculate the required capacity for your solar inverter, sum up the total wattage of your solar panels and adjust based on expected system ...



## What Size Inverter Needed for Solar Panels?

There are a few things to consider when selecting an inverter for your solar panel system. The size of the inverter will be determined by the watts of your solar panels. A general ...



## Career Compass

Generated by Firebase StudioAnswer a few questions to find career paths that match your interests, skills, and values.



## 1kW Solar Panel Size

Find out 1kW solar panel size. Learn about its dimensions, space requirements, and suitability for residential or commercial installations.



## What Size Solar Inverter Do I Need? Experts Break It ...

What Size Solar Inverter Do I Need? A solar inverter should closely match your solar system's output in kW--typically within 80% to 120% of your ...

## What Size Inverter You Need (Calculations + Battery)

The size of the inverter required will be determined by the total wattage of the appliances you need to operate and the time they need to run. ...



## Choosing and Sizing Batteries, Charge Controllers ...

In general the system should be big enough to supply all your energy needs for a few cloudy days but still small enough to be charged by your solar panels. ...



## How Many Solar Panels Required For 1Kw?

The Role of Inverter Efficiency in System Output  
The inverter converts the DC electricity produced by the solar panels into AC electricity ...



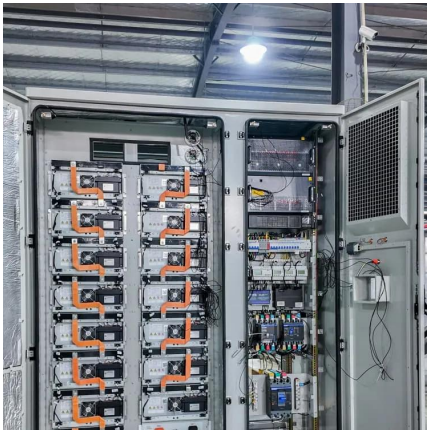
## **Solar Panel Inverter Size Calculator: Know What You Need , Angi**

Solar inverters come in different sizes, and you'll need to check the output of your solar energy system to find the perfect match. This guide can serve as a solar panel inverter ...

## **How to Correctly Calculate Solar Panel, Inverter, ...**

To figure out exactly what size solar panel batteries charge controller and inverter you will need we have to carefully calculate and set up ...





### [Solar Inverter Sizing Calculator: Important Guide](#)

A solar inverter sizing calculator is a tool used to determine the appropriate size of a solar inverter for your solar power system based on the ...

### **Solar Inverter Sizing to Improve Solar Panel Efficiency**

To calculate the required capacity for your solar inverter, sum up the total wattage of your solar panels and adjust based on expected system efficiency, shading, and the specific ...



### **How Many Solar Panels For 1Kw?**

The Role of Inverter Efficiency in System Output  
The inverter converts the DC electricity produced by the solar panels into AC electricity used by your home. Inverter ...

### **What Size Solar Inverter Do I Need? Experts Break It Down**

What Size Solar Inverter Do I Need? A solar inverter should closely match your solar system's output in kW--typically within 80% to 120% of your total panel capacity.





### [How does sizing a solar inverter work?](#)

When it comes to solar inverter sizing, installers will consider three primary factors: the size of your solar array, geography, and site-specific ...



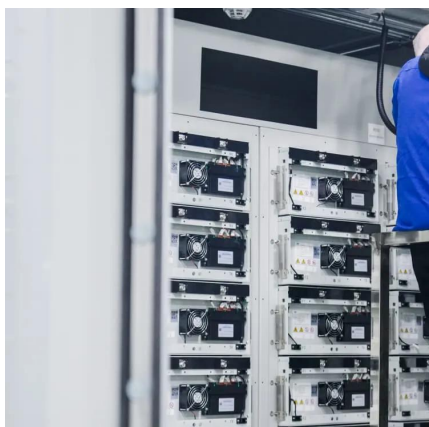
### [What Size Inverter Needed for Solar Panels?](#)

Find out 1kW solar panel size. Learn about its dimensions, space requirements, and suitability for residential or commercial installations.



### **Solar Inverter Sizing to Improve Solar Panel Efficiency**

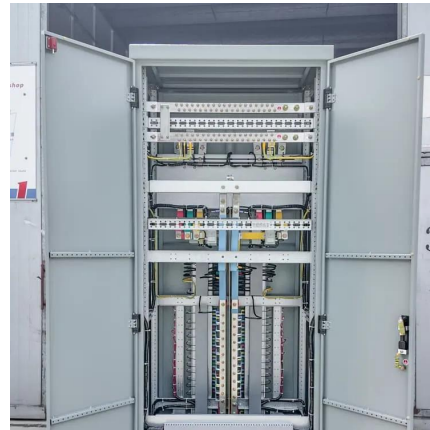
The efficiency of the inverter drives the efficiency of a solar panel system. Inverters change the Direct Current (DC) from solar panels into ...





## [How does sizing a solar inverter work?](#)

When it comes to solar inverter sizing, installers will consider three primary factors: the size of your solar array, geography, and site-specific conditions. The size of your solar ...



## [Solar Inverter Sizing Calculator: Important Guide](#)

This comprehensive guide will walk you through solar inverter sizing, explain its importance, and help you understand how to use a solar ...

## **Solar Inverter Size Chart**

The inverter is one of the most important components of a home or portable solar power system. Solar panels produce DC electricity, but you need an inverter to convert DC power into ...



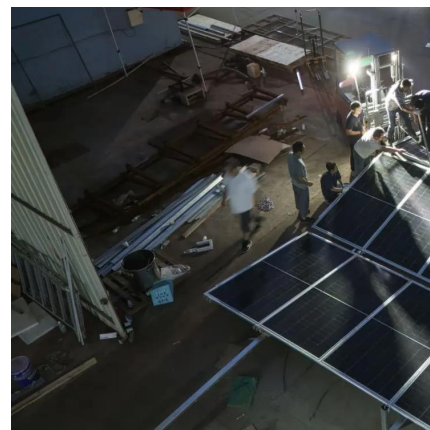
## **Inverter String Sizing Guide: What You Need to Know**

Learn everything you need to know about solar inverters with our ultimate string sizing guide - optimize and maximize your solar energy system today!



## Solar panel inverters & costs: the expert guide [UK, ...

Solar panel inverters play a crucial role in any solar panel system, ensuring that the energy harvested from the sun is usable within your home. ...

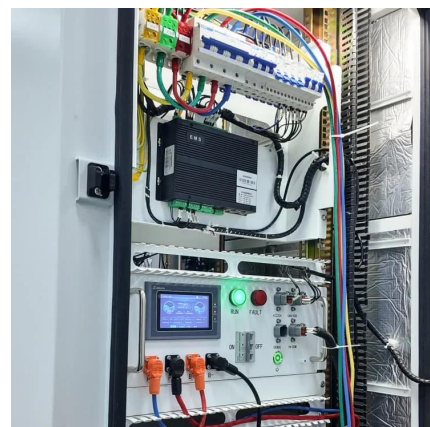


## How do you determine what size of inverter you will need to

You use gallons of gas per miles driven You use an amount of electricity (kw) per hour. So, with that analogy, kwh is your gas tank size (how big your battery is) and your inverter is the size of ...

## [Solar Inverter Sizing Calculator: Important Guide](#)

This comprehensive guide will walk you through solar inverter sizing, explain its importance, and help you understand how to use a solar inverter sizing calculator effectively.



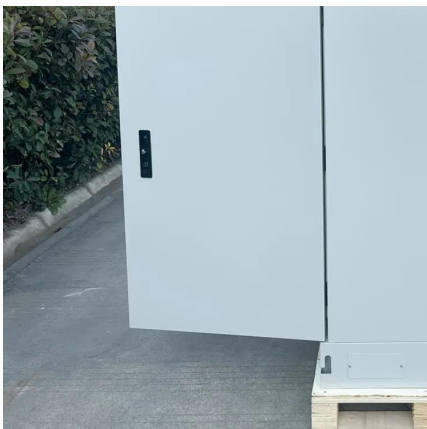


## How to Choose the Right Size Solar Inverter: Step-by-Step with ...

This guide walks you through calculating inverter size based on panel capacity, power usage, and safety margins. We use real examples from installations in Texas and ...

### [calculate inverter size for solar + Sizing Formula](#)

Common sizes range between 1kW and upwards over 10kW. In order to accurately size your inverter, here is a very simple formula:  
projectiles. Inverter Size = Total Solar Panel ...



### [How To Size A Solar Inverter in 3 Easy Steps](#)

We explain the key concepts that determine solar inverter sizing including your power needs, the type and number of solar panels you need, and the length of your wires.

## Contact Us

---

For catalog requests, pricing, or partnerships, please visit:  
<https://www.talbert.co.za>