

# **How big a lithium battery should I use with a 1200w inverter**





## Overview

---

To recharge your battery from time to time you would need the right size solar panel to do the job! Read the below article to find out the suitable solar panel size for your battery bank .

Note!The battery size will be based on running your inverter at its full capacity  
Assumptions 1. Modified sine wave inverter efficiency: 85% 2. Pure sine wave inverter efficiency:90% 3. Lithium Battery:100% Depth of discharge limit 4. lead-acid.

To calculate the battery capacity for your inverter use this formula Inverter capacity (W)\*Runtime (hrs)/solar system voltage = Battery Size\*1.15 Multiply the result by 2 for lead-acid type.

You would need around 24v150Ah Lithium or 24v 300Ah Lead-acid Batteryto run a 3000-watt inverter for 1 hour at its full capacity .

Here's a battery size chart for any size inverter with 1 hour of load runtime  
Note! The input voltage of the inverter should match the battery voltage. (For example 12v battery for 12v.

A 100Ah LiFePO4 battery can safely power a 1200W inverter, while lead-acid should cap at 600W. Gel and AGM batteries have intermediate tolerances. Mismatching chemistry and inverter size accelerates degradation and voids warranties.What is the recommended battery size for an inverter?

Interpreting Results: Once you input the required data, the calculator will generate the recommended battery size in ampere-hours (Ah). For instance, if your power consumption is 500 watts, the usage time is 4 hours, and the inverter efficiency is 90%, the calculator might suggest a battery size of approximately 222 Ah.

What is the calculate battery size for inverter calculator?

The Calculate Battery Size for Inverter Calculator helps you determine the optimal battery capacity needed to support your inverter system. By inputting critical parameters such as power consumption, inverter efficiency, and desired usage time, this calculator provides a precise battery size



recommendation tailored to your specific needs.

What voltage should a 12V inverter run on?

The input voltage of the inverter should match the battery voltage. (For example 12v battery for 12v inverter, 24v battery for 24v inverter and 48v battery for 48v inverter Summary What Will An Inverter Run & For How Long?

.

Why do lithium batteries need inverters?

With today's lithium batteries, inverters play a big part due to the energy that a lithium battery can deliver. For lithium batteries that run external BMS systems, the output current restrictions are much less compared to a lithium battery with an internal BMS system.

How much current does a 1200W Inverter Supply?

1200W inverter. However, if you are sure your load will never be over 1000W, then we can use that for calculating current. Smaller inverters tend to have low efficiency, so let's assume 85%. That means the battery will have to supply  $1000/.85=1177W$ .

How much battery do I need to run a 3000-watt inverter?

You would need around 24v 150Ah Lithium or 24v 300Ah Lead-acid Battery to run a 3000-watt inverter for 1 hour at its full capacity Here's a battery size chart for any size inverter with 1 hour of load runtime Note! The input voltage of the inverter should match the battery voltage.



## How big a lithium battery should I use with a 1200w inverter

---



### Do I Need A Fuse Between Battery And Inverter? Key Guidelines ...

For large lithium battery banks, the ANL fuse is ideal due to its excellent breaking capabilities and low voltage drop, which helps ensure electrical safety. When selecting a fuse, ...

### Calculate the Ideal Battery Size for Your Inverter with our Battery ...

Choosing the right size of battery and inverter is crucial when it comes to powering your devices efficiently. Whether you are planning an off-grid system or looking for a backup ...



### 12v LiFePo4 batteries compatible with GoPower 1500w inverter

Who's using this inverter on 12v lithium batteries (or battery) and having good success with the system? I have the inverter, currently connected to a 12v deep cycle rv ...

### How to Calculate Battery Size for Inverters of Any Size

Picking the right inverter for your needs can already be a challenge, so sizing an inverter to a





battery bank can seem like daunting additional information to know. We're here to let you ...



### Lithium Batteries: What Size Inverter Can I Use?

Bottom line, if you want to run large inverter loads above 1000w on a lithium battery, make sure you choose an lithium battery that is designed for larger inverters or a system that can be ...

### Lithium Batteries: What Size Inverter Can I Use?

Bottom line, if you want to run large inverter loads above 1000w on a lithium battery, make sure you choose an lithium battery that is designed for larger ...



### **Can an Inverter Be Too Big for Your Battery System?**

Lithium-ion batteries tolerate higher discharge rates (up to 1C) compared to lead-acid (0.5C). A 100Ah LiFePO4 battery can safely power a 1200W inverter, while lead-acid should cap at 600W.



## [Lithium \(LiFePO4\) Battery Runtime Calculator](#)

Note: Use our solar panel size calculator to find out what size solar panel you need to recharge your battery. Calculator assumption Lithium ...



## **What size inverter can I use with my lithium battery?**

We recommend the following inverter sizes:  
100Ah battery: Up to 1200W inverter  
200Ah battery: Up to 2000W inverter  
300Ah battery: Up to 3000W inverter

## **What size inverter should I buy for my camper? : r/SolarDIY**

Be aware of the size wires, fuses and delivery capacity your battery needs to run bigger inverters. Personally I have 350watt in Ute, and inherited a 2000w mod sine wave in trailer and rarely ...



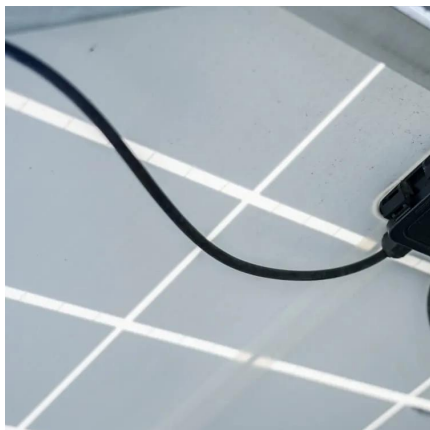
## [Inverter Battery Size Calculator , Enviraj](#)

Calculate the ideal battery size for your inverter system. Input load, backup time, voltage, and battery type to find the required capacity.



## What size circuit breaker to use?

Hi guys, I want to put a circuit breaker between my 3000 watt inverter and 2x24V200AH lithium batteries (wired in parallel). What size circuit breaker do I need? Is it ...

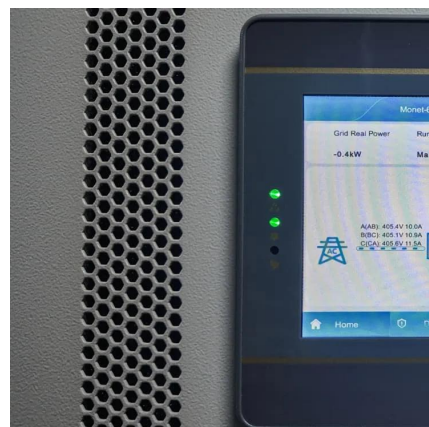


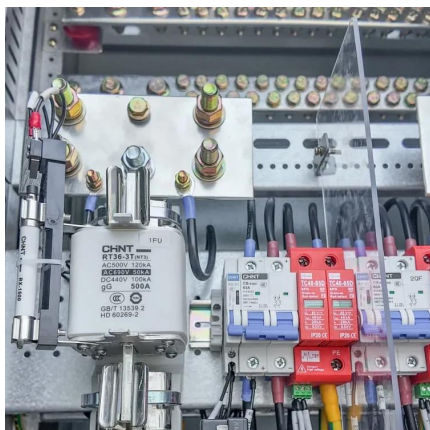
## How To Size an Inverter: Solar Inverter Sizing Explained

Optimize your inverter size for maximum efficiency and safety - find out how to size it correctly to avoid potential issues.

## [12 Volt Battery Run Time Calculator](#)

Do you have a 12v device you need to power but don't know what 12-volt battery you need? For those running a continuous 12-volt load, an adequately sized deep-cycle ...



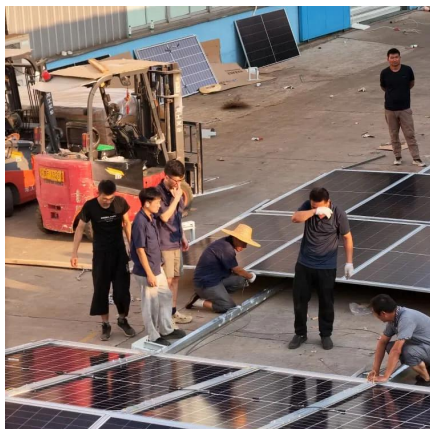


## Calculate Battery Size For Any Size Inverter (Using Our Calculator)

To recharge your battery from time to time you would need the right size solar panel to do the job! Read the below article to find out the suitable solar panel size for your battery bank

### [Calculate Battery Size for Inverter Calculator](#)

Estimate the battery capacity required for your inverter based on power load, runtime, and efficiency. Using the Calculate Battery Size for Inverter Calculator can ...



### [What Inverter Size Do I Need to Run a Kettle?](#)

Lead Acid vs. Lithium Batteries To run a 1200 watt kettle on your inverter, the battery has to be at least 12V 200ah like the Renogy Deep Cycle AGM. This battery can hold 2400 watts, so even ...

### [What Size Cable for Lithium Battery?](#)

The correct cable size for a lithium battery depends on the battery's current load, voltage, and cable run length--but most 12V lithium setups typically require 4 AWG to 2/0 ...





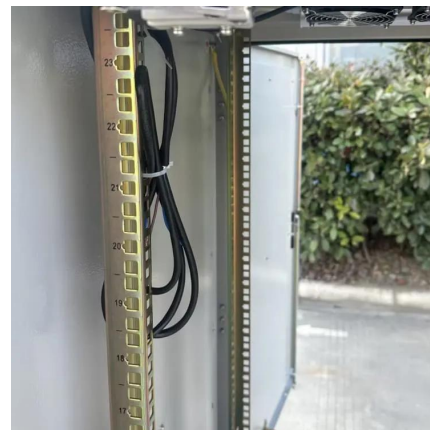
### Adequate fuse size for my battery system?

Hey guys, planning on using a 200ah 12v Ampere time lithium battery for my van and using 2/0 wire to connect to my lynx distributor, then ...



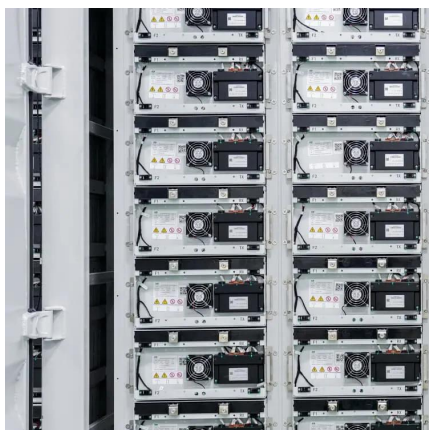
### **Battery Runtime Calculator , How Long Can A Battery ...**

Use Battery Runtime Calculator to Calculate runtime of your battery. Learn how long can a battery last. Good for solar and car battery ...



### **Calculator**

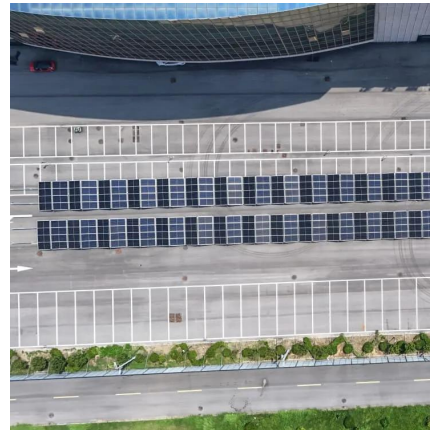
To determine the right capacity of battery that fulfils your desired backup requirement at the time of power outages lets do calculations. Here is the formula: Battery Capacity (Ah Ratings) = ...





### Battery needed for 1200 watt inverter

This means the battery voltage will be higher and the current will probably be closer to 92A. That is still pushing it, but not quite as bad. If you choose an inverter with higher ...

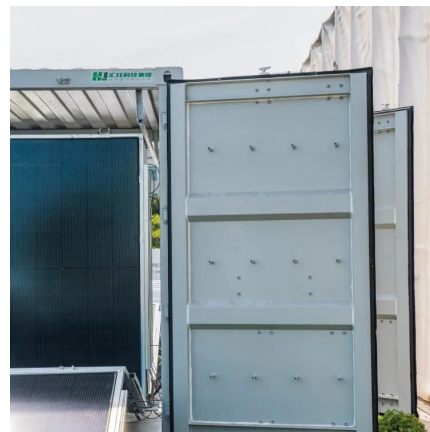


### What size circuit breakers for this setup?

The specs of the components in his example don't match mine (he's using 400w solar here and 1100-1200w inverter I think), so I would like to ...

### **What size inverter can I use with my lithium battery?**

What size inverter can I use with my lithium battery? Setec Customer Support 2 years ago Updated We recommend the following inverter sizes: 100Ah battery: Up to 1200W inverter ...



### **Inverter Cable Size Calculator & Formula Online Calculator Ultra**

For an inverter with 1200W power, a system voltage of 12V, a cable length of 20 feet, and a maximum voltage drop of 3%, the required cable size would be approximately AWG 4.



## Contact Us

---

For catalog requests, pricing, or partnerships, please visit:  
<https://www.talbert.co.za>