

How big a battery does a 2000 inverter need





Overview

So I have made it easy for you, use the calculator below to calculate the battery size for 200 watt, 300 watt, 500 watt, 1000 watt, 2000 watt, 3000 watt, 5000-watt inverter .

Note!The battery size will be based on running your inverter at its full capacity
Assumptions 1. Modified sine wave inverter efficiency: 85% 2. Pure sine wave inverter efficiency:90% 3. Lithium Battery:100% Depth of discharge limit 4. lead-acid.

To calculate the battery capacity for your inverter use this formula Inverter capacity (W)*Runtime (hrs)/solar system voltage = Battery Size*1.15 Multiply the result by 2 for lead-acid type.

You would need around 24v150Ah Lithium or 24v 300Ah Lead-acid Batteryto run a 3000-watt inverter for 1 hour at its full capacity .

Here's a battery size chart for any size inverter with 1 hour of load runtime
Note! The input voltage of the inverter should match the battery voltage. (For example 12v battery for 12v.

A 2000W inverter requires a 200ah battery to run at full load for 20-25 minutes and 600ah to run for an hour. If you want to recharge the battery at 50%, the battery sizes have to be doubled to 400ah and 1200ah respectively.How much battery does a 2000W inverter need?

A 2000W inverter requires a 200ah battery to run at full load for 20-25 minutes and 600ah to run for an hour. If you want to recharge the battery at 50%, the battery sizes have to be doubled to 400ah and 1200ah respectively. The formula is hours needed to run x watts / battery voltage = battery inverter size.

How many Watts should a 2000 watt inverter run?

A safe number is to add 25%-50% to the total number of watts needed by the inverter load. If you are installing a 2000W load, the inverter should ideally be 2500 or 3000W. In other words, a 2000W inverter should be running 1500W-1000W only. This does not mean you cannot use an inverter to the



limit.

What size battery do you need for an inverter?

The size of the battery you need depends on the intended running time and your inverter's efficiency. As a rule of thumb: For short-term use (e.g., under an hour), a single high-capacity battery with 100Ah could provide enough power. For extended use, you'll need multiple batteries or a larger battery bank to handle the continuous draw.

Can a 24v battery run a 2,000w inverter?

Now that you know you should use a 24V battery to run a 2,000W inverter, we can look at the capacity and the C-rate. The capacity of the battery is indicated in amp hours or simply Ah. The most common battery will be 12V and 100Ah. The battery capacity ties in directly with the C-rate of the battery.

How much battery do I need to run a 3000-watt inverter?

You would need around 24v 150Ah Lithium or 24v 300Ah Lead-acid Battery to run a 3000-watt inverter for 1 hour at its full capacity Here's a battery size chart for any size inverter with 1 hour of load runtime Note! The input voltage of the inverter should match the battery voltage.

How many amps does a 12V 2000W inverter use?

Using the current requirements calculated above: For a 12V 2000W power inverter: Battery system size = $181 \text{ amps} \times 2 \text{ hours} = 362\text{Ah}$ For a 24V 2000w power inverter: Battery system size = $90.5 \text{ amps} \times 2 \text{ hours} \approx 181\text{Ah}$



How big a battery does a 2000 inverter need



[How Many Batteries Do I Need for My Inverter?](#)

Before calculating how long a 12v battery will last with an inverter, you will need to know your battery's capacity and its type. You would then need to find out how ...

How big of a solar charge controller do I need with 2000 watt inverter?

When using a larger power inverter (such as 2000 watt), how to choose a suitable solar charge controller becomes a key issue. This article will explore in depth through multiple ...



How many batteries do I need to run a 2000 watt inverter

Most people underestimate the number of batteries required to efficiently power a 2000-watt inverter. Understanding the relationship between ...

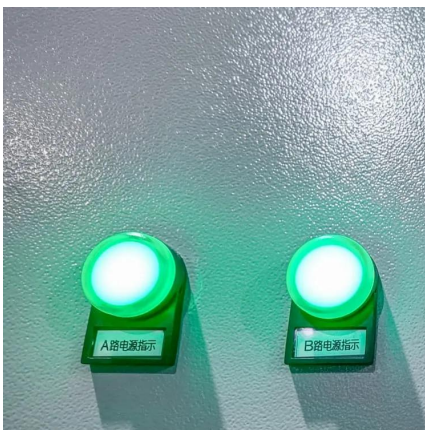
What Size Inverter Do I Need?

To figure out how long a 100Ah battery will run a 1000W inverter, you need to consider the battery's voltage and the inverter's efficiency. ...



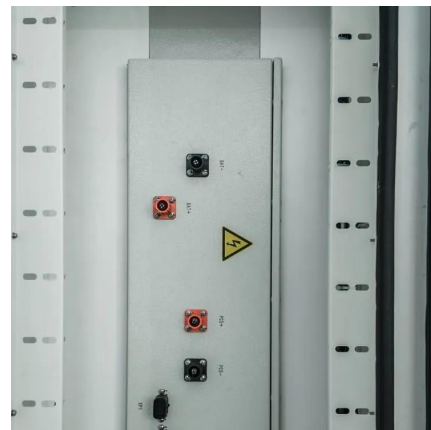
[How Many Batteries for a 2000 watt Inverter?](#)

Do you need to know how many batteries you need for a 2,000W inverter? Read this article for calculations and diagrams of different battery ...



Calculate Battery Size For Any Size Inverter (Using Our Calculator)

So I have made it easy for you, use the calculator below to calculate the battery size for 200 watt, 300 watt, 500 watt, 1000 watt, 2000 watt, 3000 watt, 5000-watt inverter



How Big of a Battery Do I Need to Run a 2000W Inverter?

To run a 2000W inverter, you typically need a battery with at least 200Ah capacity if you plan to run it for one hour. This calculation assumes a 100% efficiency rate, but in ...





What Size Fuse for 400, 750, 1000, 1500, 2000, 3000-watt Inverter

What size wire do I need for a 400-watt inverter? Depending on the inverter size, you can choose the wire for the connection. The 400 watts inverter with the 3 feet below size ...



How Many Batteries Do You Need to Run a 2000-Watt Inverter?

To run a 2000-watt inverter, you typically need 2-4 deep-cycle batteries (12V, 200Ah each) depending on runtime requirements and efficiency losses. Calculate total watt-hours needed ...

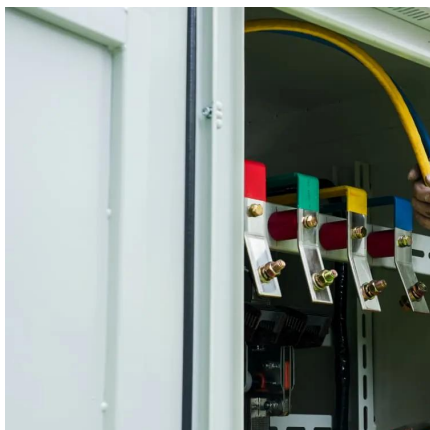
[Battery Bank Sizing for Your Inverter](#)

How to choose the ideal battery bank size for your inverter. We analyze Flooded, Gel, and AGM batteries for pairing with inverters.



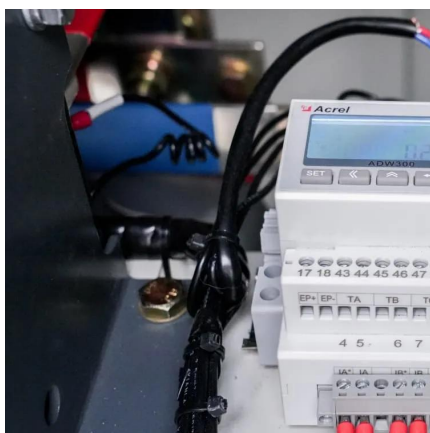
Do I Need A Fuse Between Battery And Inverter? Key Guidelines ...

It is crucial to install a fuse between the battery and inverter. A Mega fuse or ANL fuse is recommended because they manage high short-circuit currents well. For large lithium ...



How Many Batteries Do You Need for a 2000W Inverter?

When using a 12V battery, the current required to support a 2000W inverter, accounting for efficiency, is approximately 181 amps ($2174W \div 12V = 181$ amps). In contrast, ...



How Big of a Battery Do I Need for a 2000 Watt Inverter?

When selecting the appropriate battery for a 2000 watt inverter, understanding your power requirements is crucial. This detailed guide will help you determine the optimal ...

Inverter Wire Size Calculator

Unsure how to connect your inverter and battery? Check The Inverter Store's handy calculator and guide that breaks down the complex process for you easily.





How many batteries do I need to run a 2000 watt inverter

For instance, if you need to run a 2000-watt inverter for 5 hours a day on a 12-volt battery system, you would input the values into the formula ...

How many batteries are needed for a 2000-watt inverter?

There is no fixed answer to how many batteries a 2000W inverter should have. It depends on your specific needs and the type of battery you ...



What Size Battery Do I Need to Run a 2000W Inverter?

Generally, for a 2000W inverter, a battery capacity of at least 100Ah is recommended, but actual requirements may vary based on usage and efficiency factors. This article provides detailed ...

[What Size Inverter Do I Need for My RV?](#)

RV inverters allows conversion from 12V battery power to 120V AC power. For your power needs, you need the right size inverter for your RV.



How many batteries are needed for a 2000-watt inverter?

There is no fixed answer to how many batteries a 2000W inverter should have. It depends on your specific needs and the type of battery you choose. When choosing a battery, ...



How Many Batteries Do You Need for a 2000W Inverter?

When using a 12V battery, the current required to support a 2000W inverter, accounting for efficiency, is approximately 181 amps (2174W ...



What Size Battery Bank Do I Need for a 2000w Inverter?

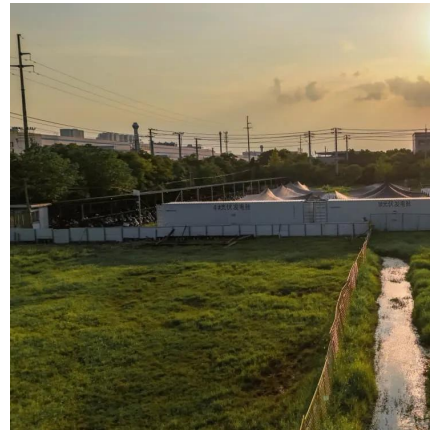
The formula is hours needed to run x watts / battery voltage = battery inverter size. The Go Power Industrial Pure Sine Wave Inverter item # 34278156 will require a 200ah ...





[What Size Inverter Do I Need to Run an Air Fryer?](#)

These things have a reputation for consuming a lot of power, so what inverter size will you need? A 2000 watt inverter is going to be enough to run an air fryer. A 350ah battery can power the ...



How Many Batteries Do You Need For a 2000W Inverter?

In the case of a 2000W inverter, how much do you need? A 2000W inverter requires a 200ah battery to run at full load for 20-25 minutes and 600ah to run for an hour. If you want to ...

Understanding Battery Capacity and Inverter Compatibility

To estimate how long a battery can run an inverter, we need to consider the power draw and the battery's capacity. Using a 100 Ah battery with a 1000W inverter, we perform the ...



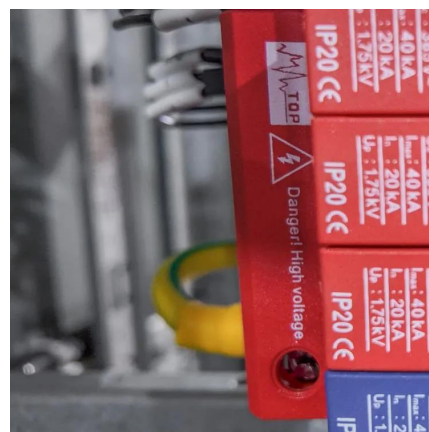
How Many Batteries for a 2000 watt Inverter? + Diagrams

Do you need to know how many batteries you need for a 2,000W inverter? Read this article for calculations and diagrams of different battery configurations.



[Solar Battery Size Guide: kWh, Inverter & Runtime](#)

2 days ago · Size your solar battery using load profile, critical loads, efficiency and DoD. Calculator matches kWh, inverter and runtime for code-compliant installs.



How many batteries do I need to run a 2000 watt inverter

Most people underestimate the number of batteries required to efficiently power a 2000-watt inverter. Understanding the relationship between inverter watts, battery capacity, ...

[How Big of an Inverter Can My Car Battery Handle?](#)

When considering connecting an inverter to your car battery, the first question we need to clarify is: how much power can your car battery ...





Contact Us

For catalog requests, pricing, or partnerships, please visit:
<https://www.talbert.co.za>