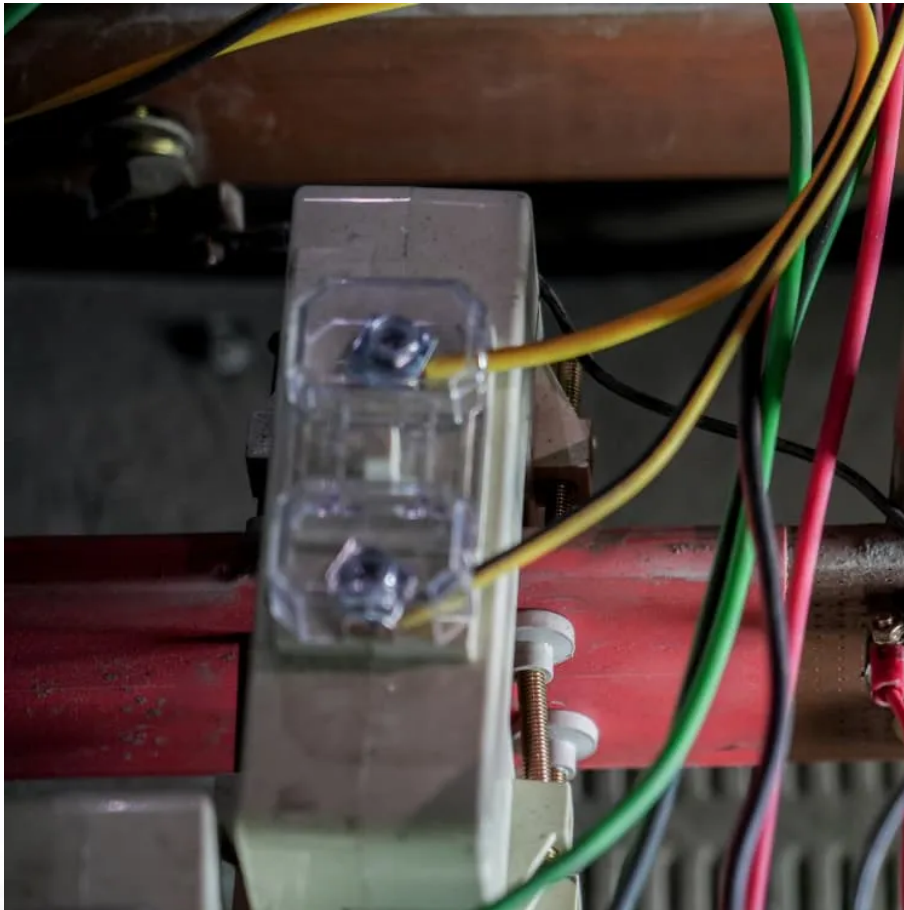


How big a battery can a 12 volt 200w photovoltaic panel charge





Overview

A 200-watt solar panel will take anywhere between 5-15 peak sun hours to charge fully charge a 12v battery. The difference will depend on the size and type of battery.

What size battery you need, will depend on the total power production of your solar panels. And the power output of the solar panels will depend on how many.

You might be wondering, which type of battery you should go for. Here are some key points that will help to make the decision easy for you.

You need batteries to store the DC power output from solar panels or later use or in case of an emergency. But, for a 200w solar panel system, I would recommend.

Can a 200 watt solar panel charge a 12 volt battery?

A 200W solar panel will fully charge a 12v 100Ah battery from 100% depth of discharge in about 7.5 peak sun hours. How fast will a 200-watt solar panel charge a 12-volt battery?

A 200-watt solar panel will take anywhere between 5-15 peak sun hours to charge fully charge a 12v battery. The difference will depend on the size and type of battery.

How long can a 200W solar panel charge a battery?

However you can use the formulas here for other battery and solar panel sizes as well. A 200W solar panel can charge a battery in 5 hours. This assumes the battery has a capacity of 75ah and is rated at 12 volts. Because solar panel output is in watts and battery capacity is in amps, we need to do some conversions.

What battery do I need for a 200 watt solar panel?

And the power output of the solar panels will depend on how many peak sun hours your location receives. Which I'll explain in a moment. Generally, for a



200 watt solar panel, you need 12v 100Ah lithium or 12v 200Ah lead-acid battery. For your convenience, here's a chart with recommended battery sizes for a 200-watt solar panel in different states.

Can a solar panel charge a 12V battery?

It's generally unsafe, as solar panels can output higher voltages (up to 20V), risking overcharging. Using a charge controller mitigates this risk and maintains battery health. How long does it take to charge a 12V battery with a 100W panel?

.

What size battery do I need for a solar panel?

What size battery you need, will depend on the total power production of your solar panels. And the power output of the solar panels will depend on how many peak sun hours your location receives. Which I'll explain in a moment. Generally, for a 200 watt solar panel, you need 12v 100Ah lithium or 12v 200Ah lead-acid battery.

How many watts do you need to charge a 12 volt battery?

For a 100Ah, 12-volt battery, you'll need 1,200 watt-hours to fully charge it. Divide this number by the average sunlight hours per day in your area to determine the required solar panel wattage. If you get 5 hours of sunlight, you'll need at least a 240-watt solar panel to recharge this battery adequately after daily use.



How big a battery can a 12 volt 200w photovoltaic panel charge



Solar Panel Size To Charge A 12V Battery (50Ah, 80, 100, 120, ...)

For most setups, solar panels with wattage between 100 and 120 provide enough wattage to charge a 12V battery. Technically, you can use any size solar panel to charge your ...

How Long Will a 200W Solar Panel Take to Charge a Battery?

In ideal situations, a 200W solar panel generates 200 watts an hour. 12V 100ah is 1200 watts, so it would take 6 hours for the panel to charge 1200 watts into the battery ($200 \times 6 = 1200$). An ...



12v Battery for Solar Panel (Best Charge for Each Amp)

12-volt batteries and solar panels are both common items in any arsenal. While some users may use 6v, 24v, or even 48v battery setups, 12v batteries are the most common ...

How Many Batteries Do I Need for a 200 Watt Solar ...

When using a solar panel 200 watt 12 volt, the perfect match of battery you can use is a 12-volt



40Ah 500-watt-hours battery. That said, when ...



How Long to Charge a 12V Battery with 200W Solar Panel

Learn how fast a 200W solar panel charges a 12V battery. Explore sizing tips, battery matching, and solar integration for off-grid and commercial systems.

[What can a 200-Watt solar panel charge?](#)

One 200-watt solar panel will take 15 hours of peak sun hours to charge a 12V, 200 Ah battery. Furthermore, to charge a 200Ah, 12V battery in one single ...



Solar Panel Fuse Calculator: How to Determine the ...

Also Read: What Size Solar Panel to Charge a 50Ah Battery? What Size Fuse for 150W Solar Panel? Let's assume a scenario where you ...



Solar Panel Size Calculator for 12V Battery Charging

Use our Solar Panel Size Calculator to determine the perfect panel for charging your 12V battery. Input capacity, voltage, and sun hours for results.

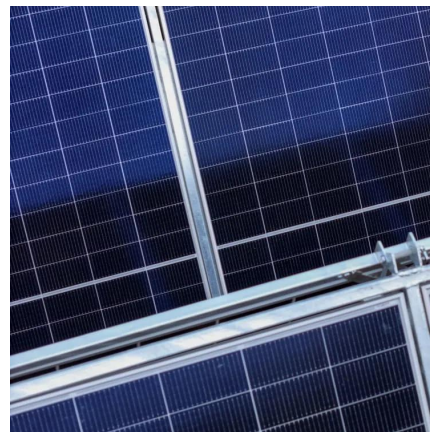


The Complete Off Grid Solar System Sizing Calculator

Below is a combination of multiple calculators that consider these variables and allow you to size the essential components for your off-grid solar ...

[What Size Charge Controller for 200W Panel?](#)

What size charge controller for 200w solar panel
A 200W solar panel will produce around 8-12 amps of current, so you'll want to get a charge ...



What Size Solar Panel Do You Need To Charge A 12V Battery? , Battery ...

How Fast Will a 200 Watt Solar Panel Charge a 12 Volt Battery? A 200W solar panel can charge a 12V battery very quickly. A 200W solar panel can produce around 10-12 amps of current per ...



How Many Watts of Solar Panel Do You Need to Charge a

To charge a deep cycle battery efficiently, you need a solar panel with sufficient wattage based on the battery's capacity and energy consumption. A typical 12V 100Ah deep ...

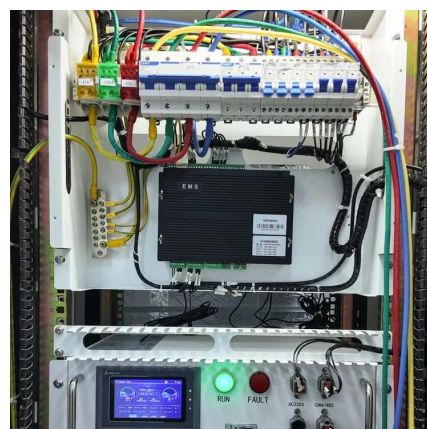


How Many Batteries Do I Need for a 200 Watt Solar Panel?

When using a solar panel 200 watt 12 volt, the perfect match of battery you can use is a 12-volt 40Ah 500-watt-hours battery. That said, when it comes to the number of battery ...

[How to Charge a Battery from Solar Panels](#)

The Solar Panel Wiring Diagram Solar panels can be used in two ways to charge batteries: directly or indirectly. An indirect connection occurs when the solar panel is ...



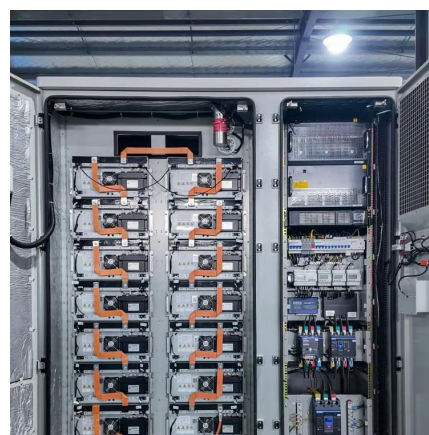


ECO-WORTHY 200 Watts 12 Volt/24 Volt Solar Panel ...

ECO-WORTHY 200 Watts 12 Volt/24 Volt Solar Panel Kit with High Efficiency Monocrystalline Solar Panel and 30A PWM Charge Controller for RV, ...

How Long Does It Take A 200W Solar Panel to Charge A 12V ...

This article gives you more insight into charging a 12-volt battery with a 200-watt solar panel, as well as how long it takes to do so.

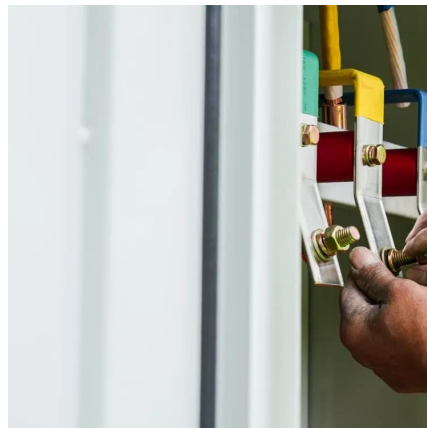


What Size Solar Panel Do I Need to Run a 12V Fridge?(with ...

You can run a 12V compressor fridge with a 100-watt solar panel, but it is essential to hook it up to a battery or portable power station. Usually, a 100Ah battery will do the job.

Solar Panel Charge Time Calculator For 12V Batteries ...

How long will a 100W, 200W, 300W, 400W, or 500W take to charge? Most of the resources on solar panel charge time you find are quite complex. We're going ...



Best 200-Watt Solar Panels: Expert Guide - SolarReviews

Our expert guide to the best 200-watt solar panels for generating power for small appliances or portable batteries.



What Size of Solar Panel to Charge a 12V or 200Ah Deep Cycle ...

In conclusion, a solar panel between 300 to 400 watts is recommended to effectively charge a 12V or 200Ah deep cycle battery. Understanding these calculations is vital ...



What Size Solar Panel Do I Need to Charge a 12V Battery

For a 12V battery, the panel's voltage usually ranges between 16V to 18V. This ensures the battery receives enough power to charge properly, especially in less-than-optimal conditions, ...





How Many Watt Solar Panel to Charge 12 Volt Battery: Calculate ...

Thus, a 300-watt solar panel setup can effectively charge your battery under ideal conditions. Using a solar charge controller is crucial. This device regulates voltage and current ...



What Size Solar Panel Do I Need to Charge a 12V ...

For a 12V battery, the panel's voltage usually ranges between 16V to 18V. This ensures the battery receives enough power to charge properly, especially in ...

[What Size Solar Panel Do You Need To Charge A ...](#)

How Fast Will a 200 Watt Solar Panel Charge a 12 Volt Battery? A 200W solar panel can charge a 12V battery very quickly. A 200W solar panel can produce ...



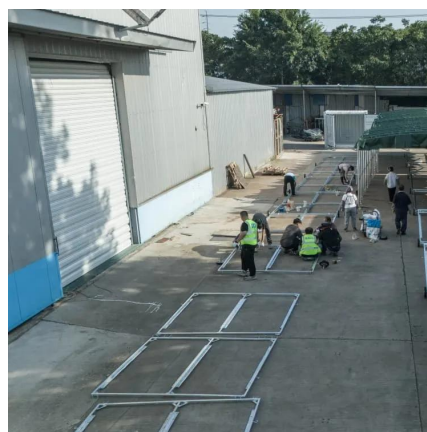
[400W Solar Panel Kit \(DIY\): What Size Battery, ...](#)

In this guide, you'll learn, how many batteries, What size charge controller, what size inverter & what size cable you'll need for a 400-watt solar ...



What Size Battery for 200W Solar Panel? (Explained!)

A 200-watt solar panel will take anywhere between 5-15 peak sun hours to charge fully charge a 12v battery. The difference will depend on the size and type of battery.



The Truth About Running Your RV Refrigerator on Solar Power

Solar panels convert sunlight into electrical energy. You charge the batteries using this electricity, which can then run the refrigerator and other 12-volt power appliances. For this system to work ...

What Size of Solar Panel to Charge a 12V or 200Ah Deep Cycle Battery?

In conclusion, a solar panel between 300 to 400 watts is recommended to effectively charge a 12V or 200Ah deep cycle battery. Understanding these calculations is vital ...



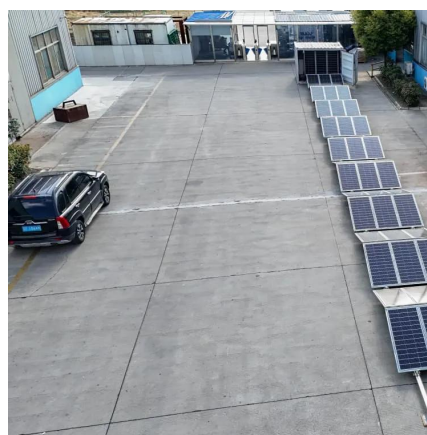


Solar Panel Size Calculator for 12V Battery Charging

Use our Solar Panel Size Calculator to determine the perfect panel for charging your 12V battery. Input capacity, voltage, and sun hours for results.

What can a 200-Watt solar panel charge?

One 200-watt solar panel will take 15 hours of peak sun hours to charge a 12V, 200 Ah battery. Furthermore, to charge a 200Ah, 12V battery in one single day, you will require 3 numbers of ...



Contact Us

For catalog requests, pricing, or partnerships, please visit:
<https://www.talbert.co.za>