

Home with separate outdoor power supply





Overview

Do I need to run power from a house to an outbuilding?

Most individuals require power in all buildings on their property, and if that building is not physically connected to the house, you will need to run the power from the home to the outbuilding. Figure 1a shows a detached garage with an underground electrical service, at minimum, supplying outdoor lighting.

How much power do you need for an outbuilding?

If the outbuilding isn't more than 50 ft. from the house and has a few lights and outlets, it usually can be supplied by a 120v, 20-amp circuit and 12/2 w/grd UF cable. But check with local building authorities before you start. Get the necessary permit, code requirements, and inspection schedules.

How do I provide power to a building that is detached?

You have 2 methods available to you to provide power to a building that is detached from your home electrical service. If you will require more than one circuit, using either method, I recommend the addition of a sub-panel in the outbuilding in order to distribute the power.

Is a permanent power outlet necessary?

For lighting, lawn tools used on a regular basis, or power needs for outbuildings, you need a permanent power solution for safety. This can involve an outdoor outlet addition to your home's main structure, or wiring run remotely to an outbuilding.

Can you run a new circuit from a panel to an outbuilding?

Otherwise, run a new circuit from the panel to the outbuilding. If the outbuilding isn't more than 50 ft. from the house and has a few lights and outlets, it usually can be supplied by a 120v, 20-amp circuit and 12/2 w/grd UF cable. But check with local building authorities before you start.



How do I choose an outdoor outlet?

When choosing an outdoor outlet, be sure to select an outdoor-rated and weatherproof model with built-in, high-sensitivity GFCI\.

All exterior outlets should have spring-loaded covers to protect them from weather, pests, and most importantly, moisture.



Home with separate outdoor power supply



Providing Electrical Service To A Detached Building

Figure 1a shows a detached garage with an underground electrical service, at minimum, supplying outdoor lighting. You have 2 methods available to you to provide power to a building ...

How to Add Multiple Outdoor Outlets Without Overloading Circuits

Adding multiple outdoor outlets can transform your yard, patio, or garden into a versatile and functional space. Whether you want to power holiday lights, set up an outdoor ...



Power to a Separate building

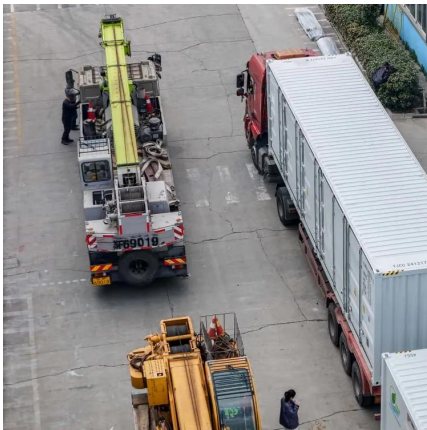
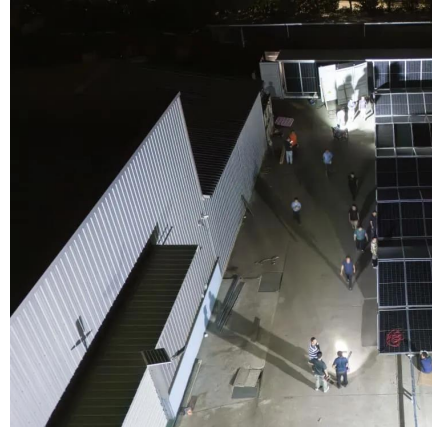
Where feeder conductors originate in the same panelboard, switchboard, or other distribution equipment, and each feeder terminates in a single disconnecting means, not more ...

How to Choose the Correct Power Supply for Your ...

Discover the best power supply for your CCTV camera. Compare AC, DC, PoE, and centralized



power options to ensure reliability and efficiency.



Adding Electricity to Your Shed, Barn, or Freestanding Addition: A

Choosing the right power source is essential for ensuring the reliability and safety of your electrical system. Each option has its benefits and limitations, and the best choice will depend on your ...

Outdoor Subpanel: Essential Guide for Efficient Power ...

Subpanels are particularly useful for supplying power to specific areas of your home or building, such as garages, workshops, or outdoor spaces. They can handle both ...



[Power supply from house to detached garage. I ...](#)

Incorporate a line trench in your patio build. Much easier to do it now instead of ...



Providing Electrical Service To A Detached Building

Figure 1a shows a detached garage with an underground electrical service, at minimum, supplying outdoor lighting. You have 2 methods available to you to ...



Power supply from house to detached garage. I honestly know

Incorporate a line trench in your patio build. Much easier to do it now instead of cutting concrete later. In addition to the other comments, it is not an "in-use" outdoor cover and ...

Mini Split Power Requirements (With Wire Size and Breaker Size)

Whichever one is used, the connecting cable extends power from the disconnect box to the condenser unit of the mini split. Mini Split Power and Wire Requirements All ...



Comprehensive guide to security camera power supplies

Separate power supplies for long and short distances: avoid using the same power supply for both long- and short-distance cameras when ...



What's the Best Way to Run Power Outside? , Mr. Electric

Need to run power outside? The experts at Mr. Electric can help. Learn more about how to safely run power outside so you're powered up when you need it.



Split system outdoor unit power supply

Hi all, I've been searching the internet to try and get an answer on the power supply standards for outdoor units in Aus. Looking to get a small unit installed for my master ...

Low Voltage Solar Landscape Lighting and Power Unit Kits

Sun-In-One(TM) Solar Landscape Lighting & Power Units provide low-voltage AC or DC power. Our plug-& -play kits are reliable, economic, & green.



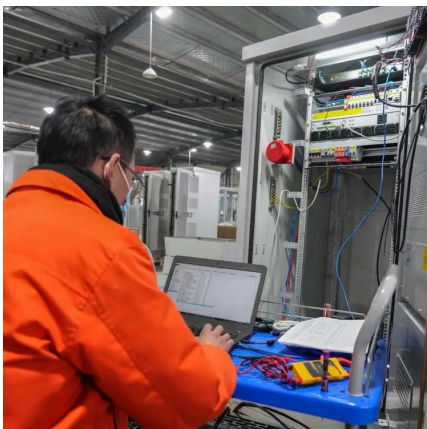


How do I connect outdoor security camera to a power ...

IP Camera has an ethernet cable and a dc12 cable that came with power adapter that plugs into outlet. Where the camera is going to be placed, ...

Philips Hue in the garden: The most important ...

Although an individual lamp costs a little more, a separate ZigBee controller is built in everywhere. In practice, this means that all lamps, even if ...



The 7 Best Portable Power Stations of 2025

Bring big backup power with you with these expert-recommended portable power stations, which can store enough power to charge electronics, appliances, and more.

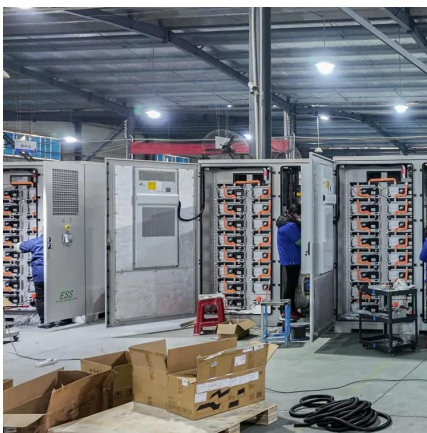
Is it possible to fit an EV charger in my garage if it's ...

However the garage has a 40 amp supply (according to my Domestic Electrical Installation Certificate), and its own consumer unit. It powers a number of ...



Power supply from house to detached garage. I ...

Power supply from house to detached garage. I honestly know next to nothing about electrical, but this doesn't seem right to me..? As you can see here, this ...



11 DIY Off Grid Electrical Systems That Power True ...

Whether you're powering a tiny home, remote cabin, or preparing for emergencies, an off-grid system can provide the energy security you need ...



Electrical Wiring and Power Supply for AC Installation

Also, the power supply for an AC unit must comply with local codes and regulations. Power circuits should be dedicated to the air conditioning system, ...





[Ways To Run Power To Your Outdoor String Lights](#)

One of the main challenges of powering outdoor string lights is the lack of available outlets. Read on to learn how to use your lights outdoors.



Outdoor Subpanel: Essential Guide for Efficient Power ...

Subpanels are particularly useful for supplying power to specific areas of your home or building, such as garages, workshops, or outdoor ...

What's the Best Way to Run Power Outside? , Mr. Electric

Adding multiple outdoor outlets can transform your yard, patio, or garden into a versatile and functional space. Whether you want to power holiday lights, set up an outdoor ...



[95-Watt Outdoor Low Voltage Power Supply \(1-Pack\)](#)

Product Details About This Product Increased capacity power supply cable for Philips Hue Outdoor Low Voltage fixtures, such as Calla, Lily, ...



Running Power to an Outbuilding

If the outbuilding isn't more than 50 ft. from the house and has a few lights and outlets, it usually can be supplied by a 120v, 20-amp circuit and 12/2 w/grd UF cable. But check with local ...



The Best Ways To Run Power Outside

Looking to run power outside of your home? Find out what the best temporary and permanent solutions are with the electrical experts at A-Abel.

11 DIY Off Grid Electrical Systems That Power True Independence

Whether you're powering a tiny home, remote cabin, or preparing for emergencies, an off-grid system can provide the energy security you need while reducing your ...





Adding Electricity to Your Shed, Barn, or Freestanding ...

Choosing the right power source is essential for ensuring the reliability and safety of your electrical system. Each option has its benefits and limitations, and the ...

FARM FOR SALE ORANJEVILLE R8 860 000 Welcome to your dream home!

?FARM FOR SALE? ORANJEVILLE R8 860 000
Welcome to your dream home! This immaculate maintained 7.4-hectare farm offers a perfect blend of tranquility and modern living, with breathtaking views ...



Contact Us

For catalog requests, pricing, or partnerships, please visit:
<https://www.talbert.co.za>