

# High electricity charges for 5G base stations





## Overview

---

How much power does a 5G station use?

The power consumption of a single 5G station is 2.5 to 3.5 times higher than that of a single 4G station. The main factor behind this increase in 5G power consumption is the high power usage of the active antenna unit (AAU). Under a full workload, a single station uses nearly 3700W.

Are 5G base stations causing more energy consumption?

However, Li says 5G base stations are carrying five times the traffic as when equipped with only 4G, pushing up power consumption. The carrier is seeking subsidies from the Chinese government to help with the increased energy usage.

Why does 5G use more power than 4G?

The data here all comes from operators on the front lines, and we can draw the following valuable conclusions: The power consumption of a single 5G station is 2.5 to 3.5 times higher than that of a single 4G station. The main factor behind this increase in 5G power consumption is the high power usage of the active antenna unit (AAU).

Does China Mobile have a 5G base station?

China Mobile has tried using lower cost deployments of MIMO antennas, specifically 32T32R and sometimes 8T8R rather than 64T64R, according to MTN. However, Li says 5G base stations are carrying five times the traffic as when equipped with only 4G, pushing up power consumption.

What is a 5G base station?

A 5G base station is mainly composed of the baseband unit (BBU) and the AAU — in 4G terms, the AAU is the remote radio unit (RRU) plus antenna. The role of the BBU is to handle baseband digital signal processing, while the AAU converts the baseband digital signal into an analog signal, and then



modulates it into a high-frequency radio signal.

How will 5G affect the energy consumption of mobile operators?

Edge compute facilities needed to support local processing and new internet of things (IoT) services will also add to overall network power usage. Exact estimates differ by source, but MTN says the industry consensus is that 5G will double to triple energy consumption for mobile operators, once networks scale.



## High electricity charges for 5G base stations

---



### Optimal capacity planning and operation of shared energy ...

A bi-level optimization problem is formulated to minimize the capacity planning and operation cost of shared energy storage system and the operation cost of large-scale 5G base ...

### What is a 5G Base Station?

These base stations are pivotal in delivering the high-speed, low-latency connectivity that 5G promises. A 5G base station is a critical ...



### 5G Base Station Chips: Driving Future Connectivity by 2025

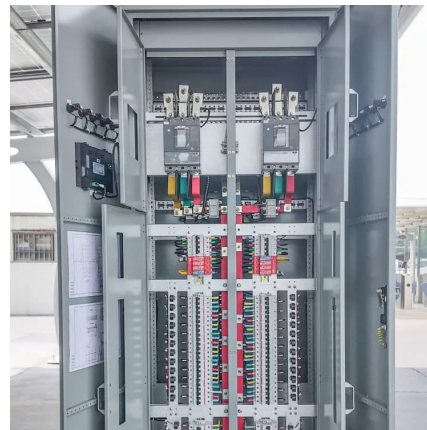
The evolution of wireless technology has brought the world to the brink of a connectivity revolution. As 5G networks become the backbone of modern communication, 5G ...

### 5G base stations use a lot more energy than 4G base stations: MTN

A typical 5G base station consumes up to twice or more the power of a 4G base station, writes



MTN Consulting Chief Analyst Matt Walker in a new report entitled " Operators ...

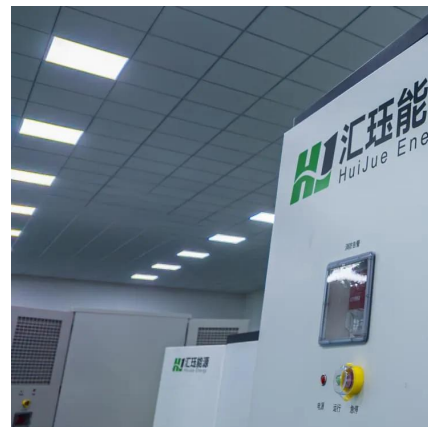


### 5G Base Stations: The Energy Consumption Challenge

Amongst these challenges, the most notable one is the energy consumption of a 5G base station due to the implementation of the massive MIMO technology and the level of network ...

### **5G Power: Creating a green grid that slashes costs, emissions**

Amongst these challenges, the most notable one is the energy consumption of a 5G base station due to the implementation of the massive MIMO technology and the level of network ...



### **What is the Power Consumption of a 5G Base Station?**

These 5G base stations consume about three times the power of the 4G stations. The main reason for this spike in power consumption is the addition of massive MIMO and ...





## 5G base stations use a lot more energy than 4G base ...

A typical 5G base station consumes up to twice or more the power of a 4G base station, writes MTN Consulting Chief Analyst Matt Walker in a ...



## [Front Line Data Study about 5G Power Consumption](#)

The power consumption of a single 5G station is 2.5 to 3.5 times higher than that of a single 4G station. The main factor behind this increase in 5G power consumption is the high power ...

## Coordinated scheduling of 5G base station energy ...

College of Electrical and Information Engineering, Hunan University, Changsha, China With the rapid development of 5G base station ...



## What is the reason for the high energy consumption of 5G base ...

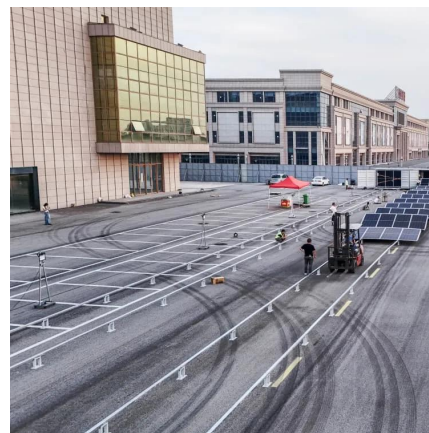
Let me explain it to you. The energy consumption of 5G base stations is mainly concentrated in four parts: base stations, transmission, power supply and air conditioning in ...



## 5G Power: Creating a green grid that slashes costs, emissions & energy

The 5G Power solution has a fully modular design and leverages advanced high-density technology, delivering a fourfold increase in power density compared with traditional power

...



## The 5G Revolution: How Base Stations Are Powering the Future ...

The 5G base station market is poised for explosive growth, 5G Revolution fueled by surging demand for high-speed data IoT integration.

## Coordination of Macro Base Stations for 5G Network with User ...

Abstract With the increasing amounts of terminal equipment with higher requirements of communication quality in the emerging fifth generation mobile communication network (5G),

...



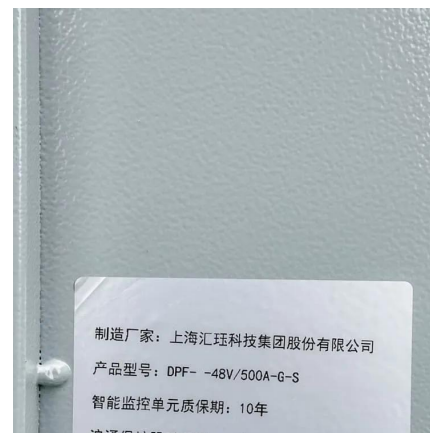


## Dynamic Hierarchical Reinforcement Learning Framework for Energy

The energy consumption of 5G base stations (BSs) is significantly higher than that of 4G BSs, creating challenges for operators due to increased costs and carbon emissions. ...

## What is the reason for the high energy consumption of 5G base station

Let me explain it to you. The energy consumption of 5G base stations is mainly concentrated in four parts: base stations, transmission, power supply and air conditioning in ...



## Towards Integrated Energy-Communication-Transportation ...

Abstract--The rise of 5G communication has transformed the telecom industry for critical applications. With the widespread deployment of 5G base stations comes a significant concern ...

## Is 5G a waste of electricity? Experts say it's complicated

As 5G developers look desperately for a "killer app" to prove the usefulness of the superfast wireless technology, mobile carriers in China are complaining about the high energy cost of ...





## Modeling and aggregated control of large-scale 5G base stations ...

The limited penetration capability of millimeter waves necessitates the deployment of significantly more 5G base stations (the next generation Node B, gNB) than their 4G ...



## Multi-objective cooperative optimization of communication base station

In the above model, by encouraging 5G communication base stations to engage in Demand Response (DR), the Renewable Energy Sources (RES), and 5G communication base ...



## Why does 5g base station consume so much power ...

There are numerous 5G base station constructions, but it is difficult to promote nationwide 5G due to high power consumption resulting in high ...



## Modelling the 5G Energy Consumption using Real-world ...

This paper proposes a novel 5G base stations energy consumption modelling method by learning from a real-world dataset used in the ITU 5G Base Station Energy Consumption Modelling ...



## Base stations are expensive and consume a lot of power. How ...

With the construction of 5G networks, the high cost of 5G base stations, especially the high energy consumption, has become widely known. Take China Mobile as an example. In order ...

## Recent Developments in 5G Base Station Engineering - ...

KPN and VodafoneZiggo are leading the charge with base stations that emphasize energy efficiency and lower carbon emissions. Solar-powered base stations and the use of ...



## Is 5G a waste of electricity? Experts say it's complicated

A 5G base station consumes "four times more electricity" than its 4G counterpart, said Ding Haiyu, head of wireless and terminals at the China Mobile Research Institute, during a ...



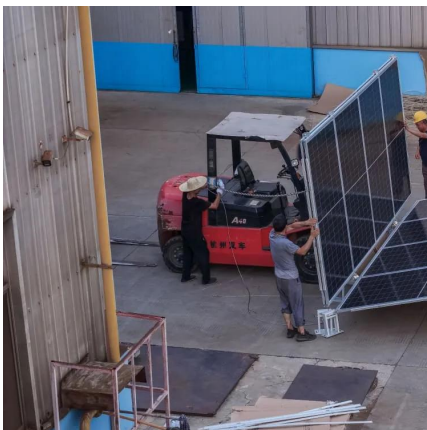
### Power consumption based on 5G communication

This paper proposes a power control algorithm based on energy efficiency, which combines cell breathing technology and base station sleep technology to reduce base station energy ...



### **Base stations are expensive and consume a lot of power. How high ...**

With the construction of 5G networks, the high cost of 5G base stations, especially the high energy consumption, has become widely known. Take China Mobile as an example. In order ...



### **Why does 5g base station consume so much power and how to ...**

There are numerous 5G base station constructions, but it is difficult to promote nationwide 5G due to high power consumption resulting in high costs and consumer ...





## Contact Us

---

For catalog requests, pricing, or partnerships, please visit:  
<https://www.talbert.co.za>