

Height of photovoltaic panels from roof





Overview

Solar panels should be mounted at a height of 3.75" to 5.25" from the roof's surface to ensure optimal performance. This measurement takes into account the seam of the SSMR, typically 1.5" to 3" in height, the mounting hardware, adding approximately $\frac{3}{4}$ " and the module frame, contributing another 1.5".



Height of photovoltaic panels from roof



Solar panel mounting height , Solamp IO Help Center

Solar panel mounting height refers to the vertical distance between the ground (or the mounting surface) and the lowest edge of the solar panels in a ground-mounted or elevated solar array.

How high should the rooftop solar panel be installed?

Rooftop solar panels typically should be installed at a height of 3 to 4 feet from the roof surface, providing adequate clearance above the roof for maintenance and avoiding ...



Solar panel inclination angle, location and orientation

Optimization of the inclination, orientation and location of photovoltaic solar panels and solar collectors in a solar installation to ...

Roofing Requirements for Solar Panel Installation: ...

Solar panels work best when they are installed on roofs with a pitch between 15 and 40



degrees. If your roof is too flat or too steep, it may not be suitable for ...



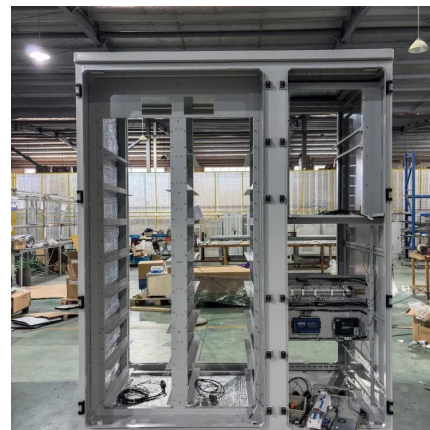
How High Off The Roof Should Solar Panels Be Mounted?

Solar panels should be mounted at a height of 3.75' to 5.25' from the roof's surface to ensure optimal performance. This measurement takes into account the seam of the SSMR, typically ...



Measuring factors influencing performance of rooftop PV panels ...

The integration of PV panels and green roof is known as green roof integrated photovoltaics (GRIPV) (Scherba et al., 2011, Witmer and Brownson, 2010) or a green roof ...



[Solar Panel Planning Permissions \[UK 2025\]](#)

Do you need planning permission for solar panels in the UK? Learn about flat roof installations, conservation area rules, and listed building restrictions.





Solar Panel Roof Requirements: What You Need to ...

Discover essential roof requirements for solar panels. Learn about pitch, load capacity, and materials to ensure your home is ready for a solar ...



Solar Panel Structure's Leg Height estimation - Manual way and ...

Learn how to estimate solar panel leg height manually and with ease using TSL Design Studio!



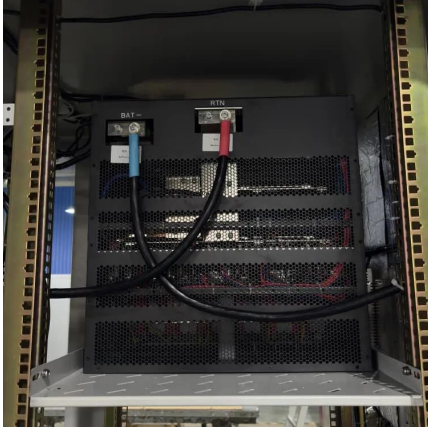
INSTALLATION MANUAL V2 22.05.2019.cdr

PREPARATION OF THE ROOF Solar Stack pedestals can be installed on different types of roofs: Tile, Modified Bitumen, TPO, Concrete etc. Roof must be cleaned with brush. ...



Clause 10.2

(i) PV installation on roof of PG VI except high hazard occupancy stated in Cl.1.4.68, with a minimum height of 4m measured between the vehicle access ...



How high should the rooftop solar panel be installed?

Rooftop solar panels typically should be installed at a height of 3 to 4 feet from the roof surface, providing adequate clearance above the roof for ...



ULTIMATE GUIDE TO SOLAR PANEL ROOF REQUIREMENTS

FAQS about Photovoltaic panel installation roof height requirements What conditions should a roof support a photovoltaic panel system? Roof structures that support photovoltaic panel ...

Solar Panel Structure's Leg Height estimation - ...

Learn how to estimate solar panel leg height manually and with ease using TSL Design Studio!





Solar mounting structure to create air gap required ...

If you have read the solar PV module datasheet carefully. There is ambient temperature, also air gap requirement 100mm under the module. When ...

Standards and Requirements for Solar Equipment, ...

y lines or that rooftop equipment (such as PV panels) be set back from the edge of the roof. Similarly, building height r gulations restrict the height of development for specific types of ...

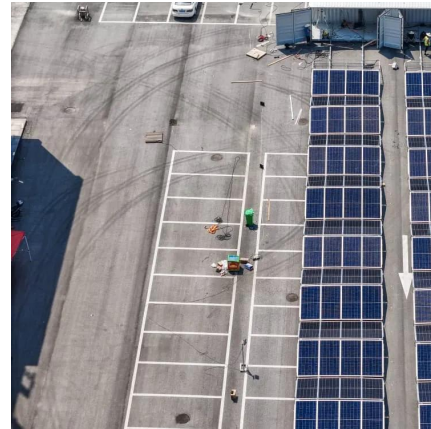


Design Guide for Rooftop Solar

Building owners and industry professionals are increasingly considering and using solar panels as a preferred method of energy production in their buildings as efficiencies increase. Designers ...

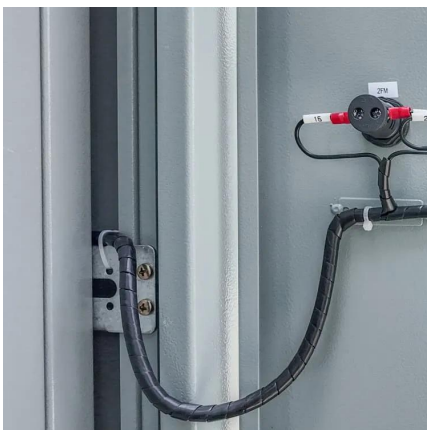
How To Mount Solar Panels To The Roof: Complete 2025 Guide

Learn how to safely mount solar panels to your roof with our step-by-step guide. Covers all roof types, tools needed, safety tips, and when to hire professionals.



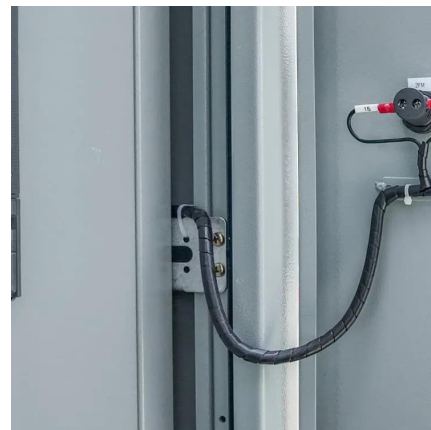
New research suggests optimal tilt angle, overhead ...

Researchers in China have investigated the effect of the overhead height and tilt angle on thermal and energy-saving performance of ...



Solar Panel Roof Requirements: What You Need to Know

Discover essential roof requirements for solar panels. Learn about pitch, load capacity, and materials to ensure your home is ready for a solar energy system.



Roofing Requirements for Solar Panel Installation: Everything ...

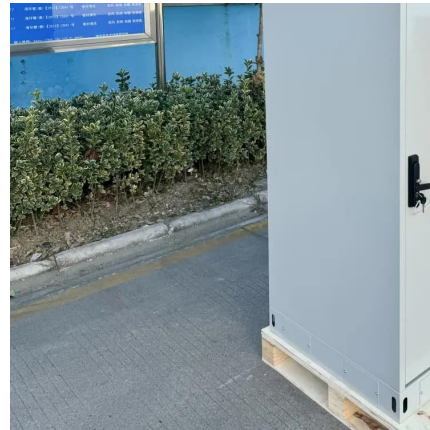
Solar panels work best when they are installed on roofs with a pitch between 15 and 40 degrees. If your roof is too flat or too steep, it may not be suitable for solar panel installation. Shading: ...





Ideal height above roof to install, and angeling.

Bottom line: In a local environment that has a moderate wind regime - maybe a 1-3 m/sec. common wind vector magnitude - once the top of roof deck to bottom of panel ...



ULTIMATE GUIDE TO SOLAR PANEL ROOF REQUIREMENTS

Solar panels should be mounted at a height of 3.75' to 5.25' from the roof's surface to ensure optimal performance.. In most cases, the ideal roof incline for solar installation is 30 degrees. ...

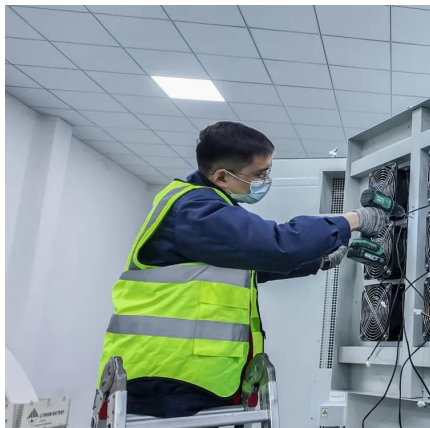
Structural and Building Plans Requirements for Rooftop Solar PV

any plinth, platform or other base erected for the purpose of supporting the solar panels that exceed a height of 2.5m; the solar panels also function as a roof shelter, covering an area that ...



Optimal Solar Panel Height Above Roof for Efficiency and Safety

The height of solar panels above the roof affects airflow, shading, and ease of maintenance. This article explores the factors affecting solar panel mounting height, optimal ...



Shade Calculator

Use our calculator to find out suggested minimum distance between photovoltaic panels
Easy Solar - Software for PV design & selling ?



How High Should Photovoltaic Panels Be Installed on Your Roof?

A 2023 NREL study showed panels mounted 6-8 inches above rooftops produced 15% more energy in summer months through natural cooling. But here's the kicker: too much elevation ...

Roof Pitch for Solar Panels: Best Angles for Maximum ...

The example demonstrates why proper roof tilt selection matters for solar panels alongside potential modification requirements. Tips for ...





Contact Us

For catalog requests, pricing, or partnerships, please visit:
<https://www.talbert.co.za>