

# **Ground-to-air communication base station power supply design standard requirements**





## Overview

---

Are ground rods required for Ericsson private radio systems communications facilities?

There should be no separately maintained ground rods or ground systems that are associated with the communications shelter, site, building, or equipment room. Adherence to these requirements becomes the performance standard with respect to Ericsson Private Radio Systems communications facilities.

### 1.4.1. Minimum Requirements.

What is direct air to ground communication?

Direct Air to Ground Communication envisages a set of Base Stations suitably placed at the ground and directly communicating with airborne object, which may be an aircraft or any other aerial vehicle. These base stations transmit the radio waves to the airborne object that crosses the range of the base stations.

What are air-to-ground (a/G) communications requirements?

This order establishes Air-To-Ground (A/G) communications requirements. It provides guidance for policy implementers to use for future changes or new installations. These policy updates will help ensure service as new systems and other changes take place. Chapter 1. General Information Chapter 2. A/G Communications Facilities Requirements.

Can a 500W switch power supply be used for communication base stations?

Conferences > 2023 4th International Confer. In order to meet the high power and high stability requirements of communication base stations for power supply, this paper designs a dedicated 500W switch power supply for communication base stations.

What are optical ground stations and future infrastructure requirements?

### 11.10.2 Optical Ground Stations and Future Infrastructure Requirements. The



ground segment is a critical part of the end-to-end science data return, and it includes all the ground-based elements that are used to collect and disseminate information from the satellite to the user (Figure 11.1).

What are the components of a ground station?

The ground station consists of an antenna and a 19" rack which houses the transceiver, rotor control and computer which make the system very compact. Examples of these components are shown in Figure 11.22. The transceiver makes use of a SDR that provides flexibility to swiftly reconfigure modulation/coding/data-rate on the run.



## Ground-to-air communication base station power supply design stan

---



### ATC , VHF / UHF radios and Ricochet recorder , Jotron

High-performance VHF and UHF radios and Ricochet recorder system for civil and defense air traffic control (ATC), and coastal and offshore communications.

### Ground-to-Air Radio Systems

Our Air Traffic Control (ATC) radios provide clear and reliable ground-to-air communications to meet the dynamic communication requirements of air traffic control centers, commercial ...



### [Design and implementation of a satellite](#)

...

For this kind of communication between payloads, container and ground control system we are using Xbee radios with 5dBi Antennas for ...

### Ground-Air Communications

With years of experience Caliber Sales Engineering provides customized communications systems to meet your needs



utilizing a variety of technologies such as HF/VHF/UHF, and ...



## Two Way Radios for Airport Operations , Quality Two ...

Icom A120B Mobile Airband Base Station Radio  
ICOM IC-A120B with Power Supply & Cabinet Air  
Band Radio - Perfect For Ground Crews Icom IC-  
A120B ...



## Communications System Power Supply Designs

Voice-over-Internet-Protocol (VoIP), Digital Subscriber Line (DSL), and Third-generation (3G) base stations all necessitate varying degrees of complexity in power supply design. We ...



## Assured Communications Between the Ground and Sky

Acting as a communications relay, it supports expanded communications coverage for geographically isolated units lacking traditional Line-Of-Sight connectivity.







## LBI-39067A

There should be no separately maintained ground rods or ground systems that are associated with the communications shelter, site, building, or equipment room. Adherence to these ...



## SC-RPAS-102-01\_Groung control station electrical systems

The GCS power supply must be designed such that the operations in normal and failure conditions shall not lead to an unsafe condition; the corresponding minimum GCS power ...

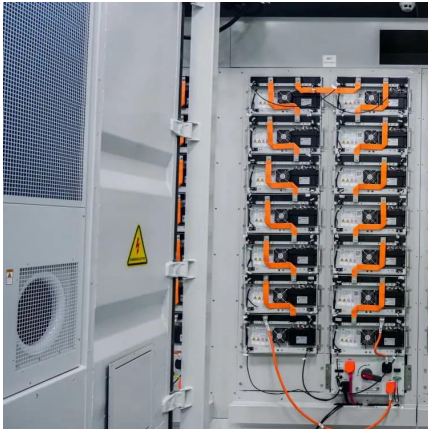
## Ground-to-Air Radio Systems

Our Air Traffic Control (ATC) radios provide clear and reliable ground-to-air communications to meet the dynamic communication requirements of air ...



## CAPR 100-1 Radio Communications Managment

Standard functions are basic installation, including connection of standard power, ground and antenna connections; fabrication of RF and grounding cables; measurement of modulation, ...



### Ground to Air Radios , Carroll International

The base station, mobile, or emergency comms-  
The URC-300 fits your application/CONOPS.  
Maximized RF performance for close proximity ...



### **5G Base Station**

The main energy consumption of 5G base stations is concentrated in the four parts of base station, transmission, power supply and computer ...

### **JO 6500.28, Radio Communications Requirements for ATC ...**

This order establishes Air-To-Ground (A/G) communications requirements. It provides guidance for policy implementers to use for future changes or new installations.



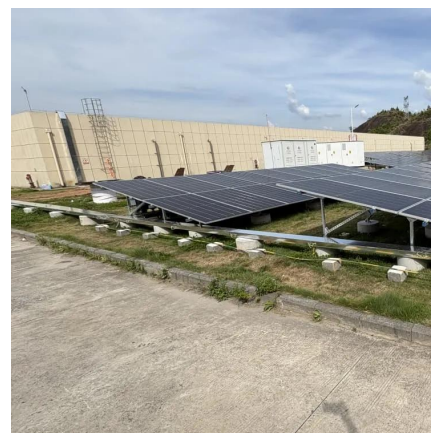


## Power Base Station

The transmitter characteristics define RF requirements for the wanted signal transmitted from the UE and base station, but also for the unavoidable unwanted emissions outside the transmitted ...

## Optimizing the power supply design for ...

Comprehensively evaluate various factors and select the most suitable power system design scheme to ensure the stable and reliable ...



## Communication power supply design based on PFC and LLC

In order to meet the high power and high stability requirements of communication base stations for power supply, this paper designs a dedicated 500W switch power supply for ...

## 11.0 Ground Data Systems and Mission Operations

Acting as a communications relay, it supports expanded communications coverage for geographically isolated units lacking traditional Line-Of-Sight connectivity.





### Communications System Power Supply Designs

The power factor corrected (PFC) AC/DC produces the supply voltage for the 3G Base station's RF Power amplifier (typ. +27V) and the bus voltage for point-of-load converters.



### **Air Traffic Management**

The TG660 VHF Ground Station is a versatile, maintenance-free base station designed for air traffic control and mission-critical applications. With RF power variants from 6 to 50W, Radio ...



### **Communications, Information, and Network Programs (CINP)**

Air/Ground Voice Communications: Due to the criticality of direct voice communication between controller and pilot, CINP is replacing and modernizing the aging ...





## **Aeronautical radio stations , UK Civil Aviation Authority**

The UK Civil Aviation Authority (CAA) outlines the responsibilities, operational requirements, and regulatory framework for Aeronautical Radio Stations and Radio Communication Services. ...



## **The power supply design considerations for 5G base ...**

An integrated architecture reduces power consumption, which MTN Consulting estimates currently is about 5% to 6 % of opex. This percentage ...

## **Optimizing the power supply design for communication base stations**

Comprehensively evaluate various factors and select the most suitable power system design scheme to ensure the stable and reliable operation of the base station.



## **On performance of RIS-aided ground-to-air and air-to-ground**

Specifically, the UAV acts as an aerial relay station, the first and the second RISs are respectively used to aid ground-to-air (G2A) and air-to-ground (A2G) communications.



## 11.0 Ground Data Systems and Mission Operations

Ground station antenna dish diameters, LNAs, frequency feeds, station gain over temperature (G/T) requirements are carefully selected for each network and are optimized for ...



## **Direct AIR TO GROUND Communication**

Direct Air to Ground Communication envisages a set of Base Stations suitably placed at the ground and directly communicating with airborne object, which may be an aircraft or any other ...

## **Contact Us**

---

For catalog requests, pricing, or partnerships, please visit:  
<https://www.talbert.co.za>