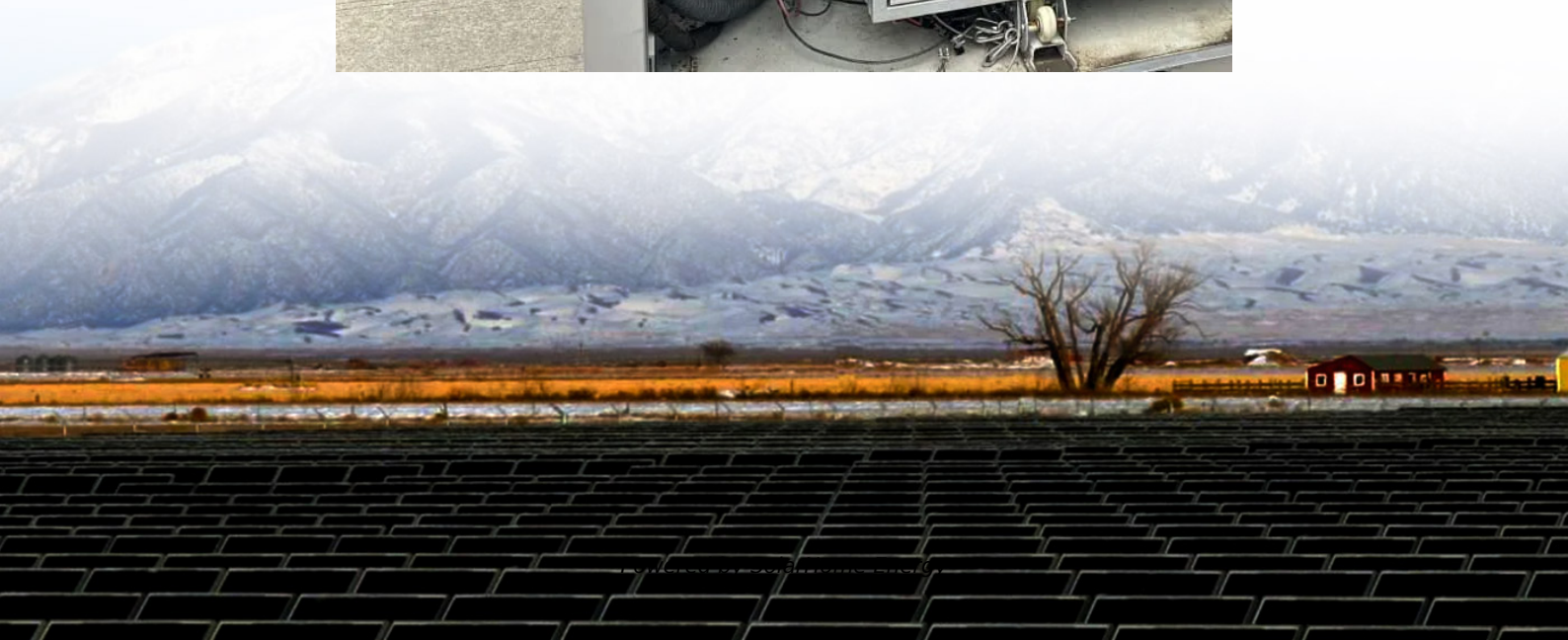


# **Functions of the base station communication module**





## Overview

---

The , or BTS, contains the equipment for transmitting and receiving radio signals ( ), , and equipment for and decrypting communications with the base station controller (BSC). Typically a BTS for anything other than a will have several transceivers (TRXs) which allow it to serve several different and dif.



## Functions of the base station communication module

---

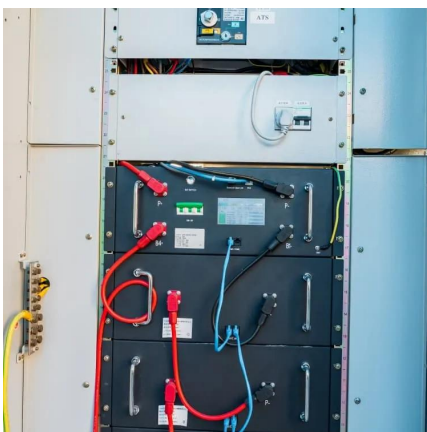


### Base Stations

Base stations form a key part of modern wireless communication networks because they offer some crucial advantages, such as wide coverage, continuous communications and ...

### Earth Station Technology

Earth station is a vital element in any satellite communication network. The function of an earth station is to receive information from or transmit ...



### Introduction to RTK

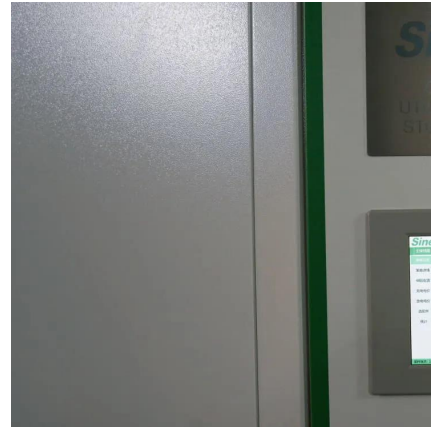
RTK solves this issue by using real-time corrections from a base station. The base station knows its fixed position and therefore is able to estimate the errors of the received ...

### [Explain 4G-LTE architecture with a neat block ...](#)

The E-UTRAN handles the radio communications between the mobile and the evolved packet core



and just has one component, the evolved base stations, ...



## Chapter 11 Flashcards , Quizlet

Study with Quizlet and memorize flashcards containing terms like What is the switching system for the cellular network?, The \_\_\_\_\_ is a set of radio transceiver equipment that enables ...

## Introduction of base station and Remote Radio Unit

Base Station, generally refers to the public mobile communication base station, the base station is used to provide signals to mobile phones. It ...



## Base transceiver station

A base transceiver station (BTS) or a baseband unit[1] (BBU) is a piece of equipment that facilitates wireless communication between user equipment (UE) and a network.



## BSS (Base Station Subsystem)

Base Station Subsystem (BSS) is an essential component of the GSM (Global System for Mobile Communications) network architecture. It is responsible for managing the ...



## What Is the Role of a Base Station in Wireless Communication?

Base stations are critical components in wireless communication networks, serving as the intermediary between mobile devices and the core network. They play a vital role in ...

### base transceiver station components

Interface Units: Convert and adapt signals between the BTS and other network elements, ensuring compatibility and proper communication. A ...



## Base station subsystem

There are vendors in which the BTS is a plain transceiver which receives information from the MS (mobile station) through the Um air interface and then converts it to a TDM (PCM) based ...



## Types and Applications of Mobile Communication ...

Distributed base stations divide traditional macro base station equipment into two functional modules according to their functions. The ...



## Base Station Controller: 5 Key Insights You Need to Know

It manages the radio resources for one or more base transceiver stations (BTS), enabling efficient communication in wireless networks. Understanding the functions and ...

## Types and Applications of Mobile Communication Base Stations

Distributed base stations divide traditional macro base station equipment into two functional modules according to their functions. The baseband, main control, transmission, ...





## Base Station System Structure

2 Base Station Background The intent of this section is to explore the role of base stations in communications systems, and to develop a reference model that can be used to describe and ...

## GSM in Wireless Communication

MSC is associated with communication switching functions such as call setup, call release and routing. Call tracing, call forwarding all functions ...



## [Digital forensics final exam Flashcards , Quizlet](#)

True/false A base transceiver station (BTS) is the equipment found at a cell site that facilitates the communication of cell phone users across a cellular network.

## Base station subsystem

The base transceiver station, or BTS, contains the equipment for transmitting and receiving radio signals (transceivers), antennas, and equipment for encrypting and decrypting ...



## The Parts of an Intercom System

The parent can hear the baby, but the baby cannot hear the parent. Intercom Stations  
Intercom stations are the parts of an intercom that ...



## Base Station Controller: Key Role in Mobile Networks

As an intermediary, the BSC is crucial in managing BTSs. It controls radio frequencies and assigns radio channels. Plus, it tweaks power levels to improve signal quality ...



## Base Station Controller

It manages the radio resources, ensuring seamless handovers, and controls multiple base transceiver stations (BTS). Base stations are the fundamental units of wireless ...





## Base Station Controller: Key Role in Mobile Networks

Discover the role of a Base Station Controller in mobile communications and how it ensures your calls and data stay connected on the go.



## GSM in Wireless Communication

MSC is associated with communication switching functions such as call setup, call release and routing. Call tracing, call forwarding all functions are performed at the MSC level. ...

## Air Force Tactical Communication Flashcards , Quizlet

Study with Quizlet and memorize flashcards containing terms like What position does the function Knob needs to be placed in, before connecting the battery?, ...



## What is the function of the Base Station Subsystem (BSS) in GSM?

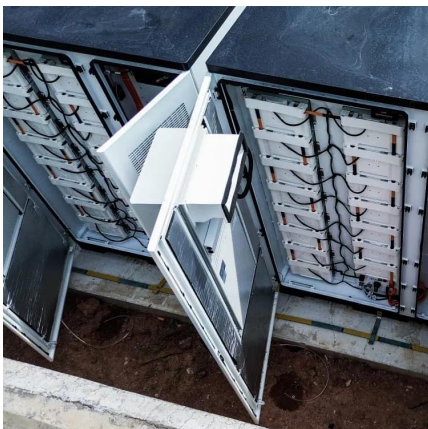
It consists of the Base Transceiver Station (BTS) and the Base Station Controller (BSC), working together to facilitate wireless communication between mobile devices and the ...



## Base station subsystem

Overview  
Base transceiver station  
Base station controller  
Packet control unit  
BSS interfaces  
See also

The base transceiver station, or BTS, contains the equipment for transmitting and receiving radio signals (transceivers), antennas, and equipment for encrypting and decrypting communications with the base station controller (BSC). Typically a BTS for anything other than a picocell will have several transceivers (TRXs) which allow it to serve several different frequencies and dif...



## Understanding Base Station Controller Architecture: A ...

In this guide, we will delve into the components and functions of base station controller architecture, providing clear insights into how it underpins the mobile ...

## Contact Us

---

For catalog requests, pricing, or partnerships, please visit:



<https://www.talbert.co.za>