

Five 400W solar panels connected in series





Five 400W solar panels connected in series



Series, Parallel & Series-Parallel Connection of Solar Panels

To calculate the number of PV modules to be connected in series, the required voltage of the PV array should be given. We will also see the total power generated by the PV array. Note that ...

[Solar Panel Series & Parallel Calculator](#)

Wondering how to connect solar panels together or even how to connect multiple solar panels together? In this guide, we'll explore three common wiring methods--series, ...



[Guide to Connect Solar Panels in Series - PowMr](#)

Connecting solar panels in series is a common approach. At this stage, it's crucial to align the series configuration with the specifications of your solar charge controller or hybrid ...

[Mixing solar panels - Dos and Don'ts](#)

There are two main types of connecting solar panels - in series or in parallel. You connect solar panels in series when you want to get a higher



voltage. If you, however, need to get higher ...



Connecting Solar Panels in Series or in Parallel? , EcoFlow US

Solar lets you power your life. But first, you need to wire your solar panels in series or parallel. Which is better? Here's your guide to connecting PV panels.

How to install five solar panels in series , NenPower

To summarize, installing five solar panels in series requires careful planning and consideration of various factors. The sequential methodology involves selecting the correct ...



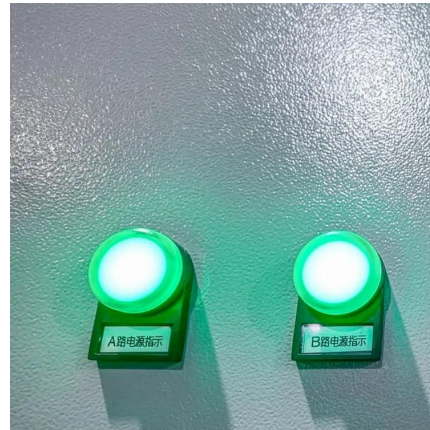
[EcoFlow DELTA Pro FAQ: Everything You Need to Know](#)

EcoFlow DELTA Pro is compatible with solar panels from various manufacturers, however, it's essential to ensure that the maximum output of the array doesn't exceed the input capacity in ...



[Solar Panel Series & Parallel Calculator](#)

If you want to connect more in series, just connect the positive cable of each additional solar panel to the negative cable of your series string. You can string together as ...



[How to Wire Solar Panels in Series \[Expert Guide\]](#)

Connecting solar panels in series means wiring a group of panels in line by connecting from positive to negative poles. This setup boosts the array's voltage while maintaining the same ...

[How to Wire Solar Panels in Series \[Expert Guide\]](#)

Connecting solar panels in series means wiring a group of panels in line by connecting from positive to negative poles. This setup boosts the array's ...



Can I add 400W panel in series with existing 2P 100W's?

A problem with two in parallel, then one in series, is if one of the parallel panels gets disconnected and other one gets shaded, the higher amperage panel will push 2x the ...



Mixing Different Wattage Solar Panels

If you connect solar panels without matching either the amps or voltages, efficiency will be drastically reduced. If your solar panels are not matched in size, the system will always choose ...



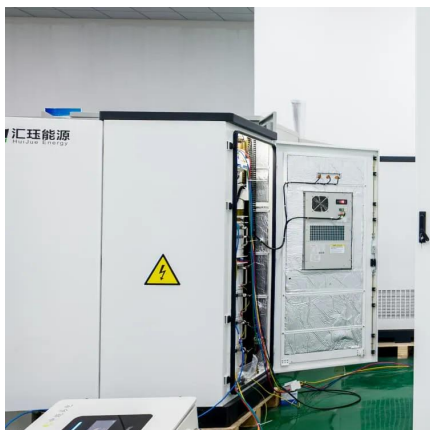
How to connect solar panels in series 24v , NenPower

To connect solar panels in series for a 24V system, follow these steps and guidelines for successful installation and functionality. 1. Understand the basics of...

How Series Vs Parallel Wired Solar Panels Affects ...

The amps and volts of a solar panel array can be affected by how the individual solar panels are wired together. This blog post is going to teach you how the ...





Solar Panel Wiring Basics: Complete Guide & Tips to ...

A series-parallel connection combines the benefits of wiring solar panels in series vs parallel. To wire solar panels under this configuration, ...

How to install five solar panels in series , NenPower

To summarize, installing five solar panels in series requires careful planning and consideration of various factors. The sequential ...



Series or parallel 400W panels connection?

So I have 16 x 400W (V_{pm}41v and I_{mp}10a) I've got as well 6x 200ah 12 v batteries (gel deep cycle-due to lack of funds) and 5.5Kw hybrid inverter (max input 600V) ...question ...

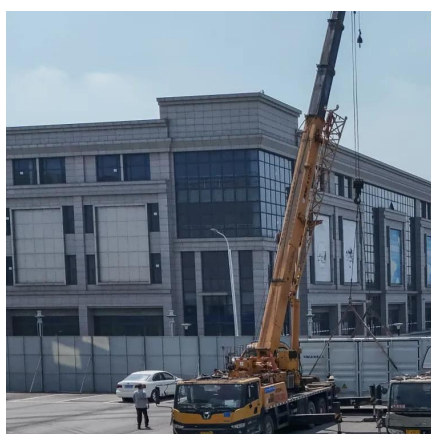
How to wire four panels for 24 volt battery?

Also if constrained by a SCC's max voltage an array made up of parallel and series connected panels allows operation that an entirely series setup will not. For instance 4 same ...



Understanding Different Solar Panel Wattages & Their ...

Why Do Solar Panels Have Different Wattages? Different solar panel wattages are designed to meet diverse energy needs. For instance, a ...



How best to wire solar input for Powerhouse 767? 200 watt Renogy panels

I purchased 2, 200 watt Renogy solar panels thinking I would get 400 watts dc input for the 767 Powerhouse. However, currently I'm only getting about 181 watts max from having connected ...



[Series or parallel 400W panels connection?](#)

Most efficient option, is to connect as many in series as possible. Without going over the input voltage limit. (VOC) then add more strings of the ...



Series or parallel 400W panels connection?

Most efficient option, is to connect as many in series as possible. Without going over the input voltage limit. (VOC) then add more strings of the same quantity, until you reach ...



Using Mismatched Solar Panel Sizes

We installed 400 watts of solar panels and by using watts law of $V \times A = \text{Watts}$ we can see that $80\text{ V} \times 5\text{A}$ equals 400W for 100% array efficiency. This means, of ...

Mixing Different Wattage Solar Panels: Good Practice ...

A Combination of the Two A combination of series and parallel circuits can also be used to avail the maximum benefits from the combination. ...



200W & 400W solar panels in series and parallel, will this work?

The thing is, the entire array has to boil down to one pair of MC4s for the power station input. So is it possible (and is it a good idea) to add four 200W panels to the 2800W ...



How to connect solar panels together: Series, parallel, combo

Wondering how to connect solar panels together or even how to connect multiple solar panels together? In this guide, we'll explore three common wiring methods--series, ...



[FAQ about solar panels : r/Ecoflow_community](#)

4. Should I connect them in series or in parallel? Solar panels that are wired in series have their output voltages added together, while their output current ...



Using Mismatched Solar Panel Sizes

We installed 400 watts of solar panels and by using watts law of $V \times A = \text{Watts}$ we can see that $80\text{ V} \times 5\text{ A}$ equals 400W for 100% array efficiency. This means, of the 400 watts of panels ...





Series, Parallel & Series-Parallel Connection of Solar ...

To calculate the number of PV modules to be connected in series, the required voltage of the PV array should be given. We will also see the total power ...

Solar Panel Amps Calculator

The multimeter is connected in series with the solar panel while it is exposed to sunlight, and the current is adjusted to the point where the ...



Contact Us

For catalog requests, pricing, or partnerships, please visit:
<https://www.talbert.co.za>