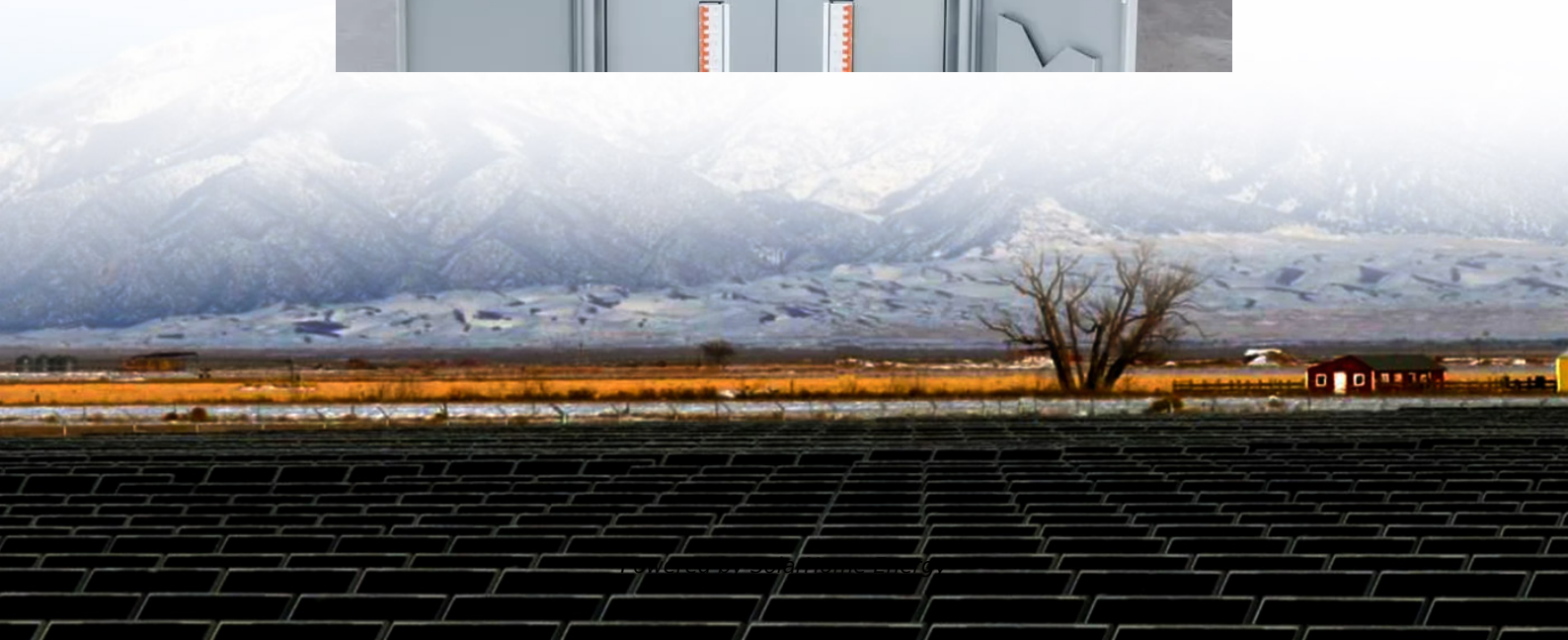


Electricity regulations for communication base stations





Overview

Do generating stations comply with the Central Electricity Authority regulations?

The generating stations commissioned before the commencement of the Central Electricity Authority (Technical Standards for Connectivity to the Grid) (Amendment) Regulations, 2018 or commissioned within six months of such commencement shall comply with the provisions of these regulations as if they were not amended. 21.

Are omnidirectional CB base station antennas safe?

Omni Directional CB base station antennas must comply with the specified requirements for field joints, feed cables, electrical protection, manufacturer's instructions and warnings, and certificates of compliance as per 16 CFR 1204 Safety Standard for Omnidirectional Base Station Antennas.

Why are base stations important in cellular communication?

Base stations are important in the cellular communication as it facilitate seamless communication between mobile devices and the network communication. The demand for efficient data transmission are increased as we are advancing towards new technologies such as 5G and other data intensive applications.

What are the components of a base station?

Power Supply: The power source provides the electrical energy to base station elements. It often features auxiliary power supply mechanisms that guarantee operation in case of lost or interrupted electricity, during blackouts. **Baseband Processor:** The baseband processor is responsible for the processing of the digital signals.

Why do we need a base station?

Technological advancements: The New technologies result in evolved base



stations that support upgrades and enhancements such as 4G, 5G and beyond, its providing faster speeds with better bandwidth. Emergency services: They provide access to emergency services, so that in case of emergency, people can call through their mobile phones.

What are the requirements for generating station & sub-station?

Every generating station and sub-station connected to the grid at 220 kV or above shall be provided with disturbance recording and event logging facilities. All such equipment shall be provided with time synchronization facility for global common time reference. 18. Shall; have Automatic Voltage Regulator (AVR).



Electricity regulations for communication base stations



[NIGERIAN ELECTRICITY REGULATORY COMMISSION](#)

The Commission makes Regulations prescribing all matters which are required or necessary to be prescribed for carrying out or giving effect to the Electric Power Sector Reform Act 2005. The ...

National Electric Vehicle Infrastructure Standards and Requirements

SUMMARY: This final rule establishes regulations setting minimum standards and requirements for projects funded under the National Electric Vehicle Infrastructure (NEVI) ...



[THE NATIONAL ELECTRICAL SAFETY CODE \(NESC\)](#)

The generation, transmission, and distribution of electricity, lumens, communication signals, and communication data through public and private utility systems that are installed and ...

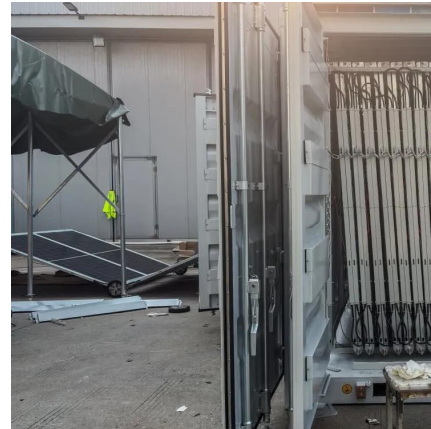


Base Stations

The present-day tele-space is incomplete without the base stations as these constitute an important part of the modern-day scheme of



wireless communications. They are ...



EV Charging

EV Charging Guidelines EV Charging Stations
Location Central Electricity Authority (Measures
relating to Safety and Electric Supply)
(Amendment) Regulations, 2019 -reg."
Furnishing of ...



Compendium of Regulations by Central Electricity Authority

No. 502/70/CEA/DP& D In exercise of the powers
conferred by sub-section (1) of section 55 and
clause (e) of section 73 read with sub-section (2)
of section 177 of Electricity Act, 2003, the ...



Improved Model of Base Station Power System for the ...

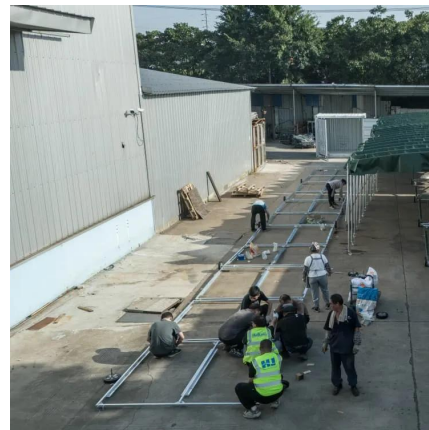
The advantages of "high bandwidth, high
capacity, high reliability, and low latency" of the
fifth-generation mobile communication
technology (5G) ...





Arai Standard

The requirements for digital communication between DC electric vehicle charging station and electric vehicle for control of DC charging are defined in this standard.



CENTRAL ELECTRICITY REGULATORY COMMISSION ...

These regulations may be called the Central Electricity Regulatory Commission (Communication System for inter-State transmission of electricity) Regulations, 2017.

A Guide to United States Electrical and Electronic Equipment ...

Omni Directional CB base station antennas must comply with the specified requirements for field joints, feed cables, electrical protection, manufacturer's instructions and warnings, and ...



Optimised configuration of multi-energy systems considering the

Thus, this study constructs a flexibility quota mechanism and a two-stage model for the optimal configuration of multi-energy system coupling equipment to satisfy the growing ...



Experimental study on the cooling and electricity-saving effects of

The cooling requirements of communication base stations (CBSs) align with the effects of radiative cooling coatings. However, these effects have not b...



Central Electricity Regulatory Commission New Delhi

Statement of Reasons Subject: Central Electricity Regulatory Commission (Communication system for inter-State transmission of Electricity) Regulations, 2017.

[Engineering Recommendation G78 Issue 4 2018](#)

3.7 Mobile Phone Base Station (MPBS) installation owned or operated by a mobile phone operating company for the purpose of transmitting and/or receiving mobile phone ...





THE NATIONAL ELECTRICAL SAFETY CODE (NESC)

3.7 Mobile Phone Base Station (MPBS) installation owned or operated by a mobile phone operating company for the purpose of transmitting and/or receiving mobile phone ...

ITP :: Regulatory-Construction%20Regulations

CERC has issued a Communication System for inter-State transmission of electricity Regulations, 2017. These regulations provide for planning, implementation, operation and maintenance and ...



CENTRAL ELECTRICITY AUHORITY

Bus Bar Protection and Breaker Fail Protection or Local Breaker Back Up Protection shall be provided wherever stipulated in the regulations.

Optimised configuration of multi-energy systems considering the

By transforming the energy supply of existing communication base stations and alleviating the pressure on the electric load, while including communication operators in the ...



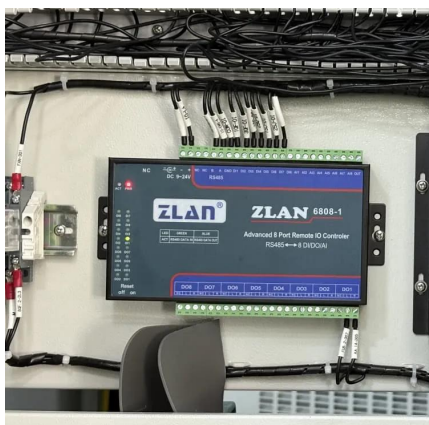
Communication Base Station Fusing Requirements , Huijue ...

As 5G deployments accelerate globally, have you considered how communication base station fusing requirements impact network reliability? Over 68% of tower downtime ...



Base Stations

The present-day tele-space is incomplete without the base stations as these constitute an important part of the modern-day scheme of wireless ...



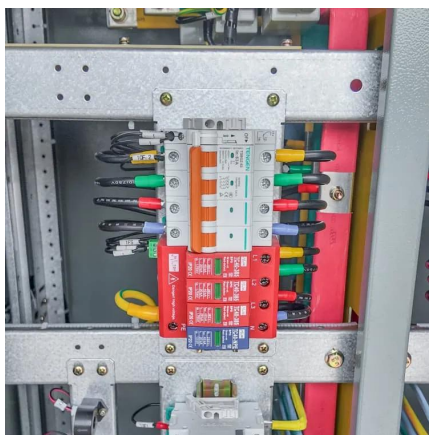
CENTRAL ELECTRICITY REGULATORY COMMISSION ...

1.2 The relevant provisions in the Central Electricity Authority (Technical Standards for Connectivity to the Grid), Regulations, 2007, CEA (Technical Standards for Communication ...



IEEE 525-2007_accepted

This revision of the guide incorporates various changes in cable installation philosophies that have occurred since the 1992 version of the guide.



New South Wales Standard Electricity Service & Installation ...

Foreword The Service and Installation Rules of New South Wales (the Rules) is the recognised industry code outlining the requirements of electrical distributors when connecting a customer ...

GUIDANCE ON THE ELECTRICITY SAFETY, QUALITY ...

The new Regulations specify safety standards which are aimed at protecting the general public and consumers from danger. In addition, the Regulations specify power quality and supply ...



Contact Us

For catalog requests, pricing, or partnerships, please visit:
<https://www.talbert.co.za>