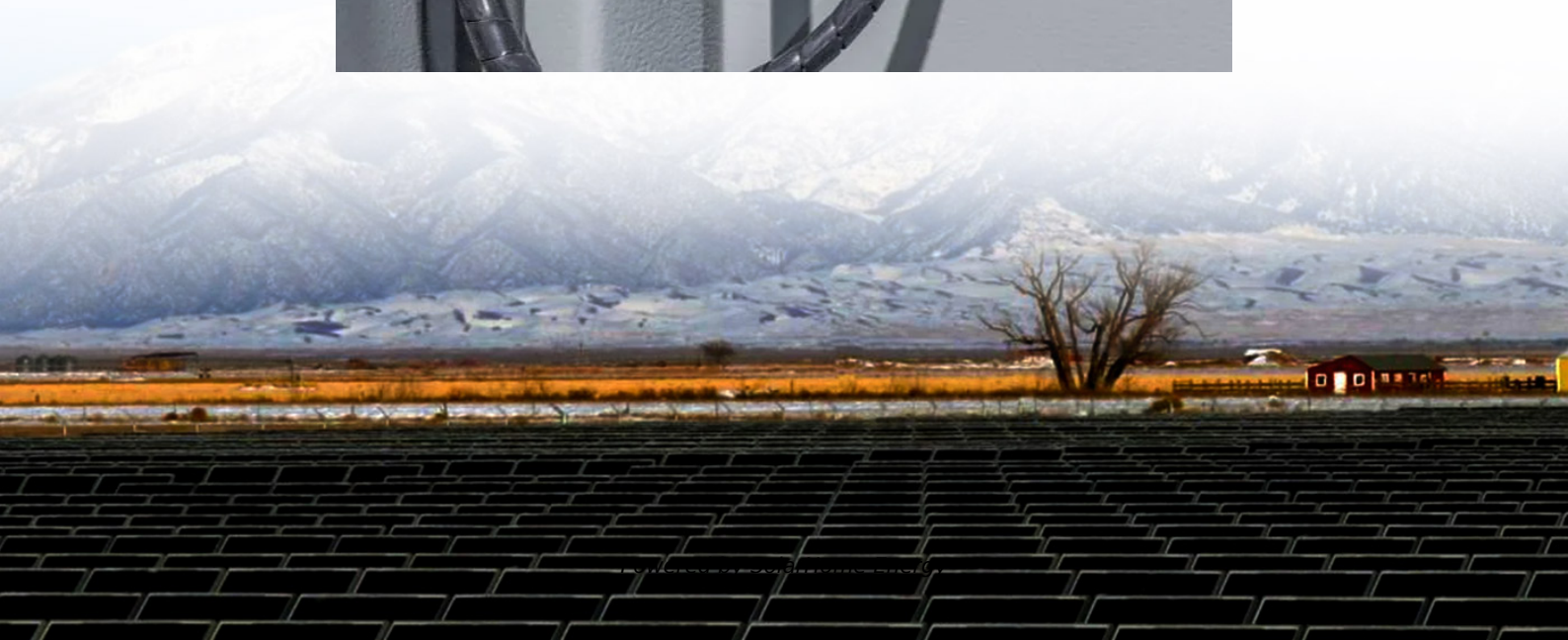


EMS charges for small rooftop communication base stations





Overview

What is an in-building emergency responder Communications Enhancement System (Erces)?

An In-Building Emergency Responder Communications Enhancement System (ERCES) is a wireless communications system used by first responder and emergency services personnel, such as police, fire, emergency medical, homeland security, and disaster response agencies.

What are the technical requirements for in-building emergency radio communication enhancement systems?

The technical requirements for design, installation, commissioning, inspection, testing, and maintenance of in-building emergency radio communication enhancement systems included in the IFC, NFPA 1, and NFPA 1221 are summarized as follows: Typical system operation is continuous or automatic.

Does NFPA 1 cover emergency radio communication enhancement systems?

The NFPA 1 model Fire Code also added very similar requirements covering in-building emergency radio communication enhancement systems in the 2012 edition, Section 11.10 (Two-Way Radio Communication Enhancement Systems).

What is an emergency responder Communications Enhancement System?

When the signal can't get to the portable radio due to interference, an emergency responder communications enhancement system needs to be installed to amplify and repeat the signal in the building to be able to make sure the signal reaches the intended recipient. The components of an emergency responder communications enhancement system include:

What is an emergency radio communication enhancement system?

Properly designed, installed, and maintained in-building emergency radio communication enhancement systems provide a cost-effective and reliable



tool for firefighter communications during fire or other emergencies within our built environment.

What are the NFPA requirements for emergency responder Communications Enhancement Systems?

In the 2024 edition of NFPA 101 ®, Life Safety Code®, requirements for emergency responder communications enhancement systems are found in Section 9.15. New buildings are required to comply with NFPA 1225, while for existing buildings the minimum required signal strength is determined by the authority having jurisdiction (AHJ).



EMS charges for small rooftop communication base stations

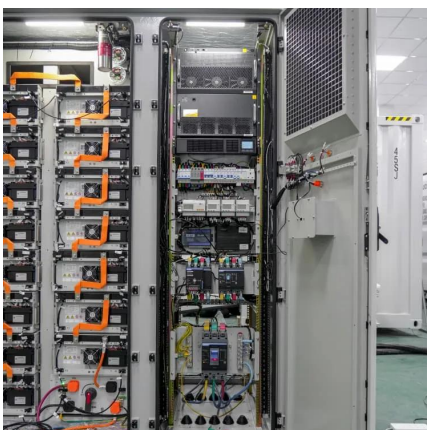


[What Is an Emergency Responder Communications ...](#)

What Is an Emergency Responder Communications Enhancement System? When building construction interferes with responder communications systems, an ERCES is often ...

Emergency Responder Radio Coverage for New and Existing ...

In-building emergency radio communication enhancement systems for two-way portable LMRs have been commercially available for many years. There are several different ...



[The New Station Model With a Message](#)

According to Tim Earle, executive vice president of investment for Pennsylvania-based design firm Catalyst Experiential, a typical EMS facility is 5,000-8,000 ...

[Alaska's News Source , KTUU/KYES , Anchorage, AK](#)

5 days ago· Alaska's News Source , Homepage , Anchorage, AKAn Anchorage judge has



resentenced the youngest Alaska woman to be convicted of murder ...



Rooftop Base Station , Huijue Group E-Site

Have you ever wondered why your video call drops mid-sentence in crowded cities? Rooftop base stations are rewriting the rules of urban connectivity, yet 78% of telecom operators still ...



The New Station Model With a Message

The price of building an EMS station can vary greatly based upon location and size, but it's a costly undertaking for any community. According to Tim Earle, ...



The cost of installing and maintaining and ERRCS

Because an ERRCS system renders the communication between emergency responders reliable and secure, the NFPA and AHJ mandate every property to have one. This ...





ERRCS Installation

RFE Communications provides ERRCS installation, ensuring compliant and effective communication systems for emergency responders. ...



[Ambulance Radios: Types And Uses . ShunAuto](#)

It is worth noting that base stations are typically operated by dispatchers who undergo extensive training and adhere to established ...

Designing Fire And EMS Stations: A Comprehensive Guide

Firefighter and Emergency Medical Services (EMS) personnel injuries at the station are much more common than recognized by the industry. Unfortunately, firefighter injury statistics, ...



Human Exposure to Radio Frequency Fields: Guidelines for ...

Primary antennas for transmitting wireless telephone service, including cellular and personal communications service (PCS), are usually located outdoors on towers and other ...



The New Station Model With a Message

According to Tim Earle, executive vice president of investment for Pennsylvania-based design firm Catalyst Experiential, a typical EMS facility is 5,000-8,000 square feet, and the cost of building ...



Rooftop Base Stations & Structure . Murphy Tower

Murphy Tower Service specializes in challenging rooftop installations of wireless communications infrastructure including base station shelters and custom support structures.

The cost of installing and maintaining and ERRCS

Because an ERRCS system renders the communication between emergency responders reliable and secure, the NFPA and AHJ mandate ...





Effective Communication in EMS Systems: A Comprehensive Guide

Understanding and utilizing advanced communication systems, adhering to regulations, and practicing effective communication techniques ensure the delivery of high-quality EMS services.

Motorola MOCOM Base Station

The Motorola MOCOM 10 Low-Band Base Station was one of Motorola's first transistorized base stations, and a popular unit for smaller services on a ...



Public Safety Primer

These frequencies are allocated by the Federal Communications Commission (FCC) for communication between fixed base stations and land mobile vehicle-mounted and portable ...

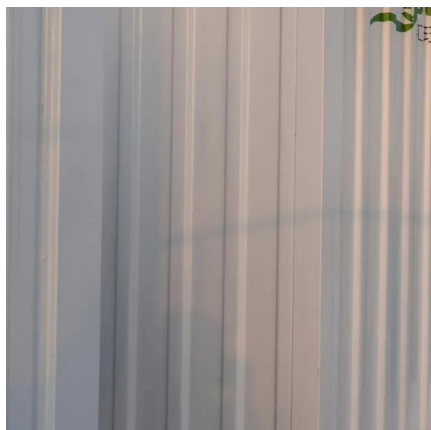
Public Safety Primer

These frequencies are allocated by the Federal Communications Commission (FCC) for communication between fixed base stations and land mobile vehicle ...



[EMS System Communications - georgiaemsacademy](#)

The Powerful Base Station Radio The base station radio generally sites on a desk and is programmed to transmit with increased power to overcome any obstacles or distance ...



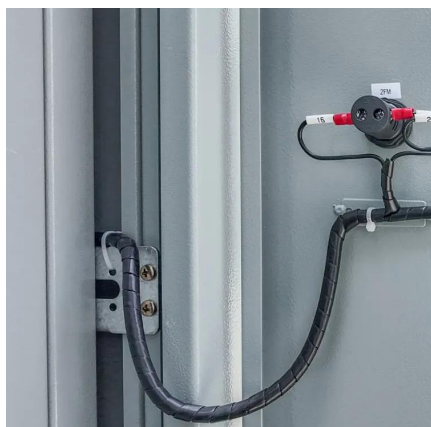
What is the cost of building and maintaining a communication ...

In conclusion, building and maintaining a communication base station involves significant initial setup costs and ongoing maintenance expenses. These costs can vary widely depending on ...



Base Stations and Energy Levels

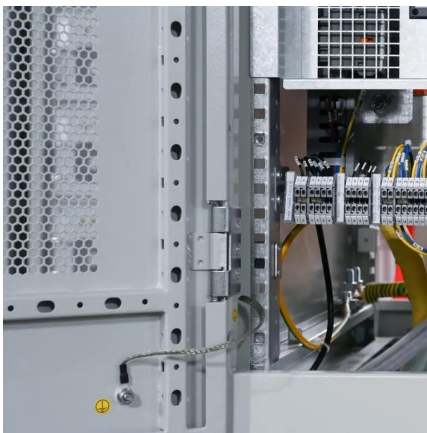
[breadcrumb] Cellular Base Stations and Energy Levels Mobile communications work by using low power radio waves to carry speech and ...





small cell base station

A small cell base station is a type of wireless communication infrastructure that is designed to enhance network capacity and coverage, particularly in areas with high user ...



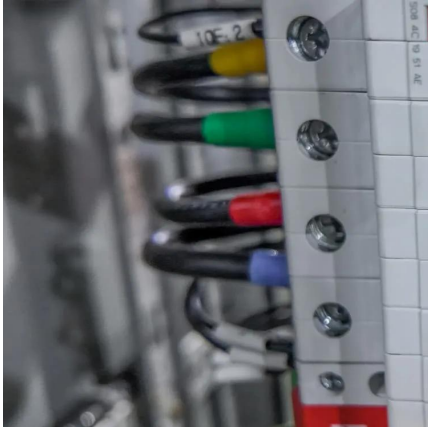
Base Station Equipment

Base stations are a great way to stay connected, especially during an emergency. We have base station radios, antennas, and microphones! Same with a vehicle antenna, the longer and ...



EMS-Only Stations Have Specific Needs Not Found in ...

Dedicated emergency medical services (EMS) stations share many similarities with fire-only stations that don't handle EMS calls but also have a ...



Process and Technical Requirements for ERCES

Complete the following steps in the sequence outlined to ensure all Federal Communications Commission (FCC) and Fairfax County (FFXC) regulations and requirements are met.



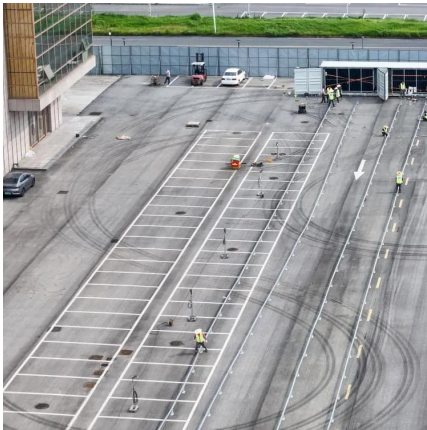
EMT Ch 13 Communications Flashcards, Quizlet

Study with Quizlet and memorize flashcards containing terms like Communications Systems, Base stations, Mobile radios and more.

What is the cost of building and maintaining a communication base station

In conclusion, building and maintaining a communication base station involves significant initial setup costs and ongoing maintenance expenses. These costs can vary widely depending on ...





[Rooftop Base Stations & Structure , Murphy Tower](#)

Murphy Tower Service specializes in challenging rooftop installations of wireless communications infrastructure including base station shelters and custom ...

Contact Us

For catalog requests, pricing, or partnerships, please visit:
<https://www.talbert.co.za>