

Double glass module size





Double glass module size



Products Modules

Des: Dual-glass module is based on 182mm large-size silicon wafers, high power, high efficiency, high compatibility, high quality and low BOS. It can reduce the ...

D-Matrix Bifacial Double Glass Module

Double glass solar panels have longer average lives and are essentially PID-immune. D-Matrix Bifacial module is one of the examples from Das Solar.



VEGA SERIES

UTILITY SCALE SOLAR MONO | BIFACIAL | PERC | PV MODULE DESIGNED TO PERFORM AND BUILT TO LAST Our PV modules are designed with better technology in ...

Wholesale HJT 182mm 490W 500W 505W Bifacial Double Glass Solar Module

The symmetrical double-glass structure offers



90% bifaciality, capturing reflected light to increase rear-side energy generation. Coupled with PIB-based edge sealing, the module achieves ...



FrameLess - jin-solar

Transparent PV 160-340W Jinri T Series are customized bifacial double glass transparent solar PV modules with 5%-70% transmittance, which is specially desinged photovoltaic panels for ...



What are the advantages of dual-glass Dualsun modules?

Dual-glass type modules (also called double glass or glass-glass) are made up of two glass surfaces, on the front and on the rear with a thickness of 2.0 mm each.



Modelling of a double-glass photovoltaic module using finite

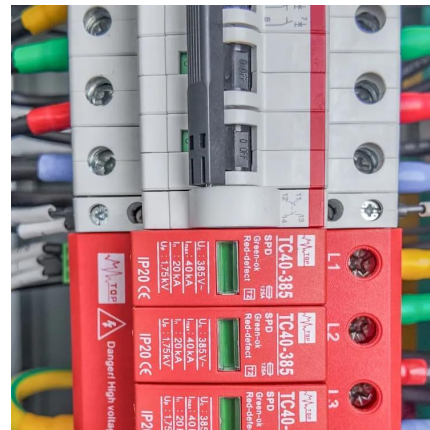
A simulation model of finite differences describing a double-glass multi-crystalline photovoltaic module has been developed and validated using experimental data from such a ...





ZNSHINE SOLAR 705W TOPCon Bifacial Double Glass Solar ...

The ZNSHINE SOLAR ZXM8-GPLDD132 705W is a TOPCON Bifacial Dual Glass high-performance photovoltaic module designed for utility-scale and large commercial solar ...



What are Double Glass Solar Panels?

The symmetrical double-glass structure offers 90% bifaciality, capturing reflected light to increase rear-side energy generation. Coupled with PIB-based edge sealing, the module achieves ...

DAS-DH108ND-EN-440-460(Black Frame)

Version number:2024.01.09 The datasheet is only applicable to Australia and Europe All data contained in this datasheet is subject to change without notice. The right of final interpretation ...



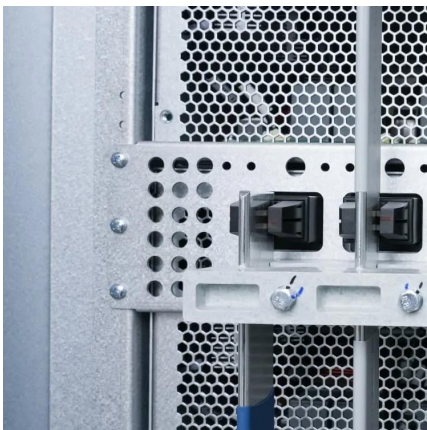
What are Double Glass Solar Panels?

With double-glass modules, the glass sheets at the front and back have the same thickness, and the neutral layer, which is in the middle, is not under any compressive or tensile ...



Presentation

Deformation of frameless glass-glass module is more uniform than framed glass-backsheet module. Mounting clips for glass-glass are typically more complicated and expensive. Packing ...



What is the Double Glass Photovoltaic Solar Panel?

Glass-glass module structures (Dual Glass or Double Glass) is a technology that uses a glass layer on the back of the modules instead of the traditional ...

390W Bifacial Mono PERC Mono Double Glass Module

Introduction JA bifacial modules are assembled by high-performance PERCIUM encapsulated by glass-glass panels, are capable of converting energy from lights on front and diffuse light, as ...



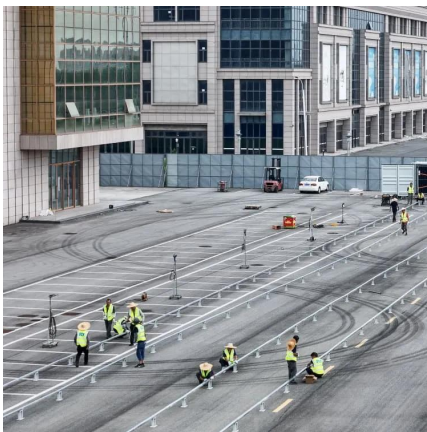


54 Pcs Bifacial Double Glass Module

The P-type Series 54 Pcs Bifacial Double Glass Module DAS-DH108PA With a lot of power in their compact design, the double-glass design offers more efficiency gains and suits a variety ...

Single-glass versus double-glass: a deep dive into ...

For instance, the transition from 3.2mm to 2.8mm for single-glass modules and 2mm for double-glass modules, and even to 1.6mm, ...



Glass-Glass PV Modules

The weight of glass-glass modules are still an issue, with current designs using 2 mm thick glass on each side for framed modules, the weight is about 22 kg, while 2.5 mm on each side will ...

ECO LINE HJT GLASS-GLASS BIFACIAL

Bifacial 108-cell N-TYPE HJT solar module in glass-glass construction, black frame. The monocrystalline solar module, with glass-glass construction and white mesh back-sheet, ...



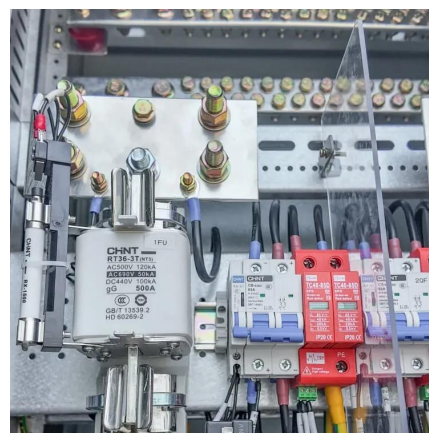
Module 210 Series

210 Bifacial Double Glass Module Series Des: The product combines 210mm large-size silicon wafers with PERC, multi-busbar, half-cut, and improve the energy density of the module with ...



P-Type Series

The 182 modules are characterized by high-efficiency, high-bifaciality ratio, low operation temperature, excellent performance in low irradiation, weather ...



[JinkoSolar: Transparent backsheet vs dual glass](#)

Transparent backsheet can successfully decrease module weight and the difference between the glass-transparent backsheet module and the ...





Single-glass versus double-glass: a deep dive into module reliability

For instance, the transition from 3.2mm to 2.8mm for single-glass modules and 2mm for double-glass modules, and even to 1.6mm, necessitates a careful consideration of the ...



Double the strengths, double the benefits

In contrast, double glass modules replace the polymer layer with another glass sheet, creating a robust sandwich structure. At IBC SOLAR, we ...

Glass-Glass PV Modules

The weight of glass-glass modules are still an issue, with current designs using 2 mm thick glass on each side for framed modules, the weight is about 22 kg, ...



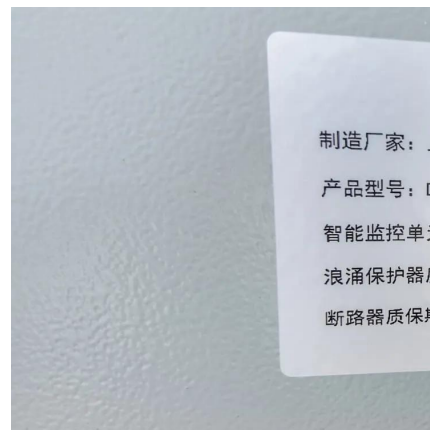
Double glass solar module , Maysun Solar

Double glass modules use an innovative design with glass on both sides, offering higher photovoltaic conversion efficiency and better environmental ...



Double glass solar module , Maysun Solar

Double glass modules use an innovative design with glass on both sides, offering higher photovoltaic conversion efficiency and better environmental characteristics.



Double the strengths, double the benefits

In contrast, double glass modules replace the polymer layer with another glass sheet, creating a robust sandwich structure. At IBC SOLAR, we use 2,0 mm x 2,0 mm glass ...

Contact Us

For catalog requests, pricing, or partnerships, please visit:
<https://www.talbert.co.za>