

Double-glass module installation angle





Overview

In most cases, PV modules optimum angle are equal to the location's latitude. Please check the Fig 1. Option A:Vertical installation with two purlines and four aluminium alloy clamps. Option B:Vertical installation with three purlines and six aluminium alloy clamps.



Double-glass module installation angle



Solarspace Double Glass Photovoltaic Modules Installation ...

The tilt Angle of PV Modules refers to the Angle between the Modules' surface and the ground plane. The Modules get maximum output power when facing directly into the sun.

[Installation Manual\(Double glass PV module\)](#)

For the modules whose installation angles are larger than 10 degrees, in most cases, the normal rainfall can keep the module glass surface clean. If it's too dirty or stained, arrange workers to ...



[PV Module Installation Manua-Double GlassI-EN-???](#)

PV Module Installation Manual Aiko Digital Energy Technology reserves the right to change this manual without prior notice.



INSTALLATION MANUAL

The module tilt angle is measured between the solar modules and the ground. Optimal tilting of PV module is almost the same as the latitude of



installation location.



JA Solar PV Bifacial Double-glass Modules Installation Manual

For high wind load and snow load areas, if the tracking bracket installation method is used, it is recommended to use 2.5mm thickness and above 60mm height purlin installation with 790mm, ...

INSTALLATION GUIDE Photovoltaic Module(Double-glass)

3.2 LOCATION AND ANGLE SELECTION It is recommended to install PV modules where has excellent sunlight resources. In the Northern Hemisphere, the module ...



INSTALLATION MANUAL OF PHOTOVOLTAIC MODULE ...

The "A surface Matching Clamp" has a bent hook structure where contacts with the frame to increase the friction, it can better fix the module, so it is recommended to install modules with ...





Double Glass PV Module Installation Introduction

Front and back glass could protect solar cells. The module which the glass is broken must be replaced immediately. In ordinary outdoor environment, current and voltage generated from ...



Installation_Manual_of_Bifacial_Mod ule

This general manual provides important safety information relating to the installation, maintenance and handling of bifacial double glass solar modules (BiKu and BiHiKu series).

Installation Guide for

module and panel are installed on a roof that must have fire-resistant degree of class A. A minimum distance of 10 cm between the roof plane and the module is generally recommended.



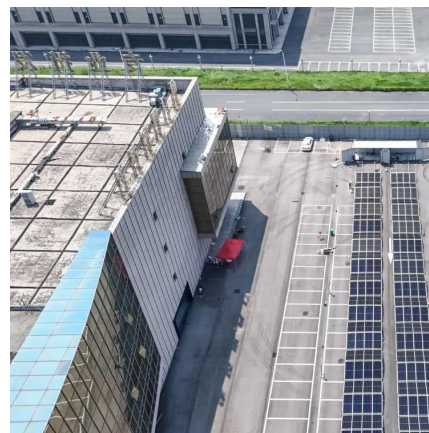
JA SOLAR PV MODULES INSTALLATION MANUAL

For detailed information on the best installation angle, please refer to standard solar photovoltaic installation guides or consult a reputable solar installer or systems integrator.



[A Comprehensive Guide to Bifacial Solar Panels](#)

Canadian Solar Canadian Solar bifacial panels combine the advanced BSC technology with double glass module manufacturing expertise. ...



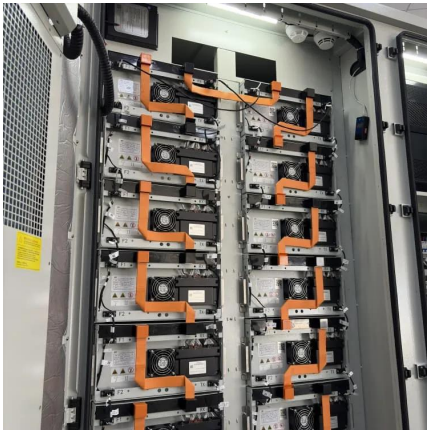
[PV Module User Manual-DAS-EN-2024.05](#)

Any Module installation operator shall notify the above requirements to the end users (or consumers). The "Module" or "PV Module" mentioned herein refers to one or more single ...

INSTALLATION GUIDE Photovoltaic Module(Double-glass)

GENERAL INFORMATION Thanks for choosing SEG Photovoltaic Modules (hereafter referred to as "PV Module"), This Guide is to give information on how to apply SEG ...



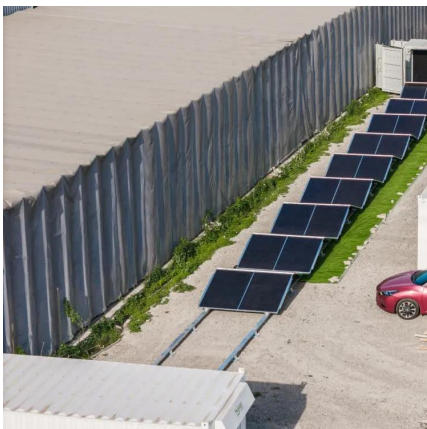


UL Dual Glass and Bifacial module

The most optimistic installation angle varies according to different latitudes and longitudes; please consult experts with appropriate knowledge background when determining ...

Global Installation Guide for Suntech Power Standard ...

This installation manual contains important electrical and mechanical installation information as well as safety information that you must be familiar with, providing important safety instructions ...



Solarspace Double Glass Photovoltaic Modules Installation ...

Thanks for choosing Solarspace Solar PV modules. This guide contains information regarding the installation and safe handling of Solar- space photovoltaic module (hereafter is referred to as ...

JA Solar PV Bifacial Double-glass Modules Installation ...

For detailed information on the best installation angle, please refer to standard solar photovoltaic installation guides or consult a reputable solar installer or systems integrator.



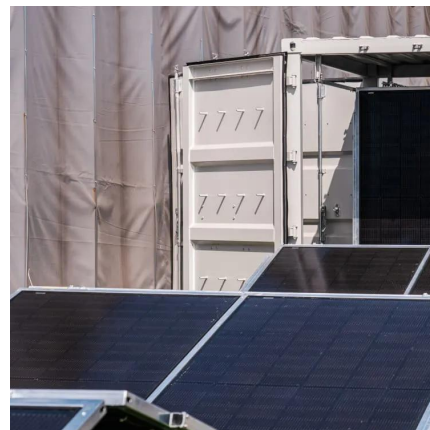
InstallationGuide for DASSOLAR ...

Purpose of this guide This is guide contains information regarding the installation and safe handling of DAS SOLAR CO.,LTD, photovoltaic module (hereafter referred to as "module"). ...



INSTALLATION GUIDE Photovoltaic Module(Double-glass)

3.2 LOCATION AND ANGLE SELECTION It is recommended to install PV modules where has excellent sunlight resources. In the Northern Hemisphere, the module should typically face ...



Contact Us

For catalog requests, pricing, or partnerships, please visit:
<https://www.talbert.co.za>