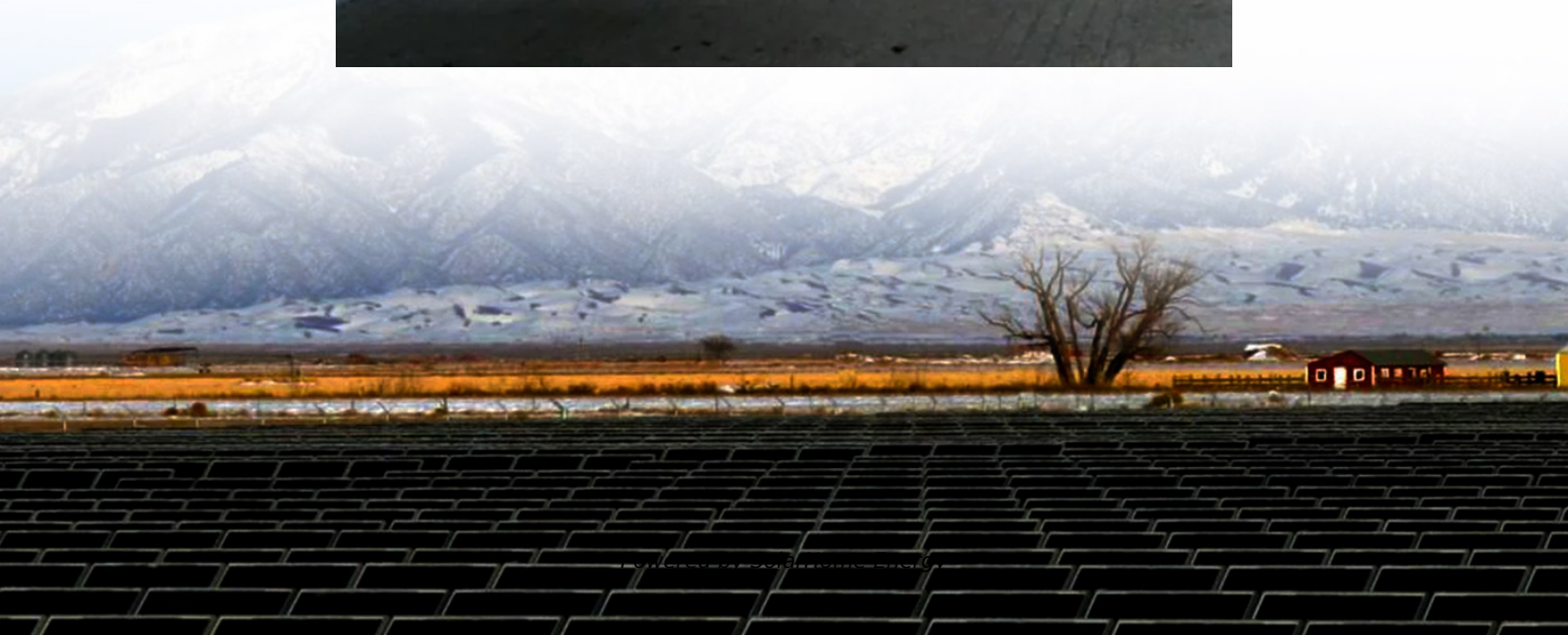


## **Double-glass bifacial modules are suitable for**





## Overview

---

Single-glass bifacial modules are lightweight and suitable for rooftop installations, while double-glass bifacial modules provide greater resistance to weather conditions, making them ideal for ground-mounted installations and complex environments. Should bifacial panels have double/dual glass?

These days, many bifacial panel designs incorporate double/dual glass at the rear of the modules. Glass-glass panels seem to better transmit light and are more resistant to unpredictable weather, moisture, corrosion, and have good mechanical load capacity.

What is a bifacial solar module?

The front of a bifacial solar module is covered with a protective glass and the rear side may be made of either glass or transparent polymer backsheet that allows sunlight to pass through. This stands in contrast to conventional solar panels which have opaque backsheets.

Why are glass-glass bifacial modules becoming more popular?

Due to their better reliability, glass-glass bifacial configurations have a larger portion of the worldwide bifacial module market share. Glass shortages, weight concerns for larger format modules, and decreasing prices for transparent backsheets have caused some manufacturers to switch to a glass-transparent backsheet structure.

What is bifacial glass technology?

Bifacial glass technology is the preferred material among manufacturers for the rear side cover of the modules. Some key advantages of the glass-glass structure are: Glass-glass modules can also be frameless, which helps eliminate the cost of an extruded aluminum frame. However, glass-glass models with frames have a lower risk of breakage.

Do bifacial modules come with frames?



As a result, most glass-glass modules come with frames in place. Compared with standard glass backsheet technology, framed modules with two layers of glass are heavier. Therefore, transparent backsheets are a solution for a lighter bifacial module. A more lightweight module means less cost on transportation, labor, and trackers whenever applicable.

Does Trina Solar have a dual glass bifacial module?

However, Trina Solar has made such a breakthrough by abandoning the backsheet and developing the brand-new dual glass module. Trina Solar Vertex TSM-DEG21C.20 (670 W) framed dual-glass bifacial module



## Double-glass bifacial modules are suitable for

---



### [Bifacial Solar Modules , Maysun Solar](#)

Single-glass bifacial modules are lightweight and suitable for rooftop installations, while double-glass bifacial modules provide greater resistance to weather ...

### **The Bifaciality of Solar Panels: A Comprehensive Guide from ...**

Bifacial double-glass solar panels are not suitable for residential rooftop photovoltaic systems and flat commercial and industrial rooftop projects, as these scenarios limit the performance and ...



### [Krannich Solar India: Bifacial Modules](#)

Bifacial modules Optimally Utilizing Double-Sided Solar Panels Bifacial solar modules generate electricity not only from direct sunlight but also ...

### [Advantages and Disadvantages of Monofacial vs.](#)

Key differences: Single-sided panels will continue to dominate traditional installations, while





bifacial panels are suitable for high-efficiency ...



## Bifacial Solar Panels: What are They and Are They Worth It?

Bifacial solar panels, as the name suggests, have cells on both the front and rear sides of the panel. This dual-sided exposure to light offers advantages in terms of total energy ...

### Bifacial Double Glass Module Market

Bifacial Double Glass Module Market Outlook The global market size for bifacial double glass modules was valued at approximately USD 3.5 billion in 2023 and is projected to reach USD ...



## N-Type HJT Bifacial OBB Half Cell Double-glass Solar Module

Combining gettering process and  $\sim$ c-Si technology to ensure higher cell efficiency and higher module power.



## Bifacial Solar Panels: What are They and Are They ...

Bifacial solar panels, as the name suggests, have cells on both ...

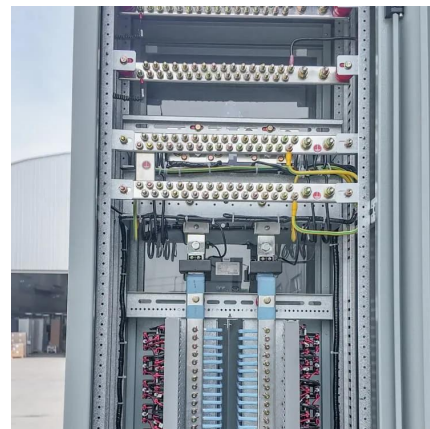


## The Difference Between Bifacial Module and Double ...

In summary, the primary difference between a bifacial module and a double glass bifacial module is the presence of glass on both sides in the ...

## Regional Trends and Opportunities for Bifacial Mono PERC Double Glass

The global market for bifacial mono PERC double-glass modules is experiencing robust growth, driven by increasing demand for higher efficiency solar power solutions and ...



## Dual-glass vs glass-backsheet: The winning formula for bifacial modules

Our dual glass modules use the same internal circuit connection as a traditional glass-backsheet module but feature heat-strengthened glass on both sides. We produce the ...



### Bifacial Solar Modules , Maysun Solar

Single-glass bifacial modules are lightweight and suitable for rooftop installations, while double-glass bifacial modules provide greater resistance to weather conditions, making them ideal for ...

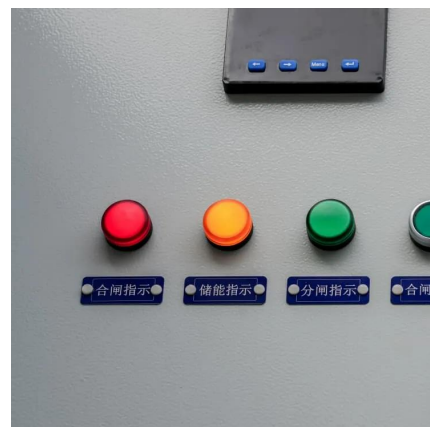


### **Advantages and Disadvantages of Monofacial vs. Bifacial Double Glass**

Key differences: Single-sided panels will continue to dominate traditional installations, while bifacial panels are suitable for high-efficiency projects that require long-term ...

### **Bifacial Double Glass Module Market Size & Future Growth 2032**

Bifacial double glass modules offer advantages such as improved light absorption, lower temperature coefficients, and better mechanical stability, making them suitable for harsh ...







## Bi-facial Double Glass

Among our product portfolio is the High-Power Density low-glare module (GMD series), 3-in-1 Building-Integrated solar roof materials (BiPV series), Bi-Facial double glass Fire Test Class A ...

## [What Are Bifacial Solar Panels - A Complete Guide](#)

Q: Are bifacial solar panels durable? A: Yes, thanks to their double-glass design, they often withstand harsh weather conditions better than ...



## Dual-glass vs glass-backsheet: The winning formula ...

Our dual glass modules use the same internal circuit connection as a traditional glass-backsheet module but feature heat-strengthened glass on ...

## What Are Bifacial Solar Panels? , UK Complete Guide

Why are bifacial solar panels gaining increasing popularity against normal ones? What is a bifacial solar panel? Discover differences and learn the pros and cons in this article.





## Bifacial double glass solar modules: The additional power of bifacial

Bifacial solar cells have a broader application perspective due to the bifacial generation capacity and higher system efficiency and are particularly suitable for snowier ...

**\*\*????**

Fire resistance of Suntech's bifacial and double glass module is Class C according to IEC61730-2, and is suitable for mounting over a class A roof. Do not install modules on a roof or building ...



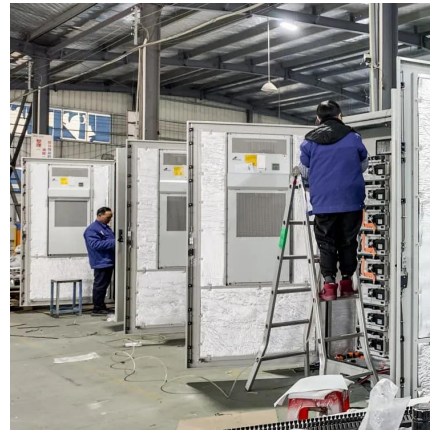
## Bifacial Vs Monofacial Solar Panels: 6 Differences

Working of Bifacial Solar Panels A photo voltaic cell is placed inside the module and has glass on both the rear side and front sides. The ...



## JA Solar PV Bifacial Double-glass Modules Installation Manual

For roof installations, modules should be mounted over a fire resistant covering suitable for this application, with adequate ventilation between the module backsheet and the mounting surface.

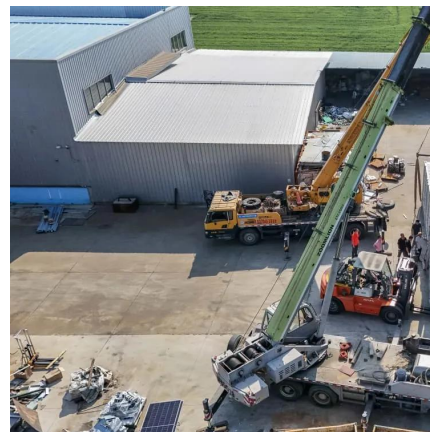


### How does the double-glass construction affect the energy ...

This makes double-glass bifacial modules particularly well-suited for high-reflectivity environments and challenging installation conditions, ensuring better returns on solar ...

### The Bifaciality of Solar Panels: A Comprehensive ...

Bifacial double-glass solar panels are not suitable for residential rooftop photovoltaic systems and flat commercial and industrial rooftop projects, as ...



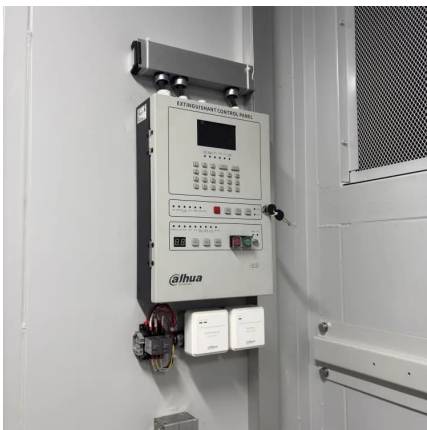
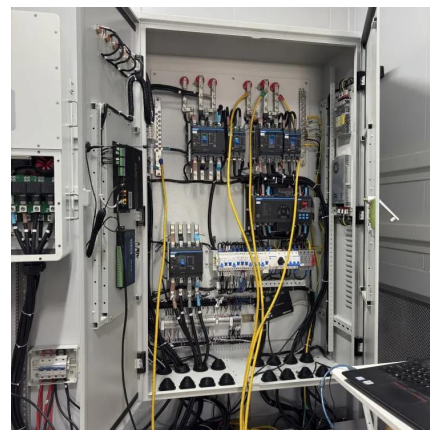
### [JA SOLAR PV BIFACIAL DOUBLE-GLASS MODULES ...](#)

For the bifacial modules, in order to maintain the energy yield of module rear side, the distance between the bottom of modules and the roof or ground surface is recommended be at least 1m.



## Bifacial double glass solar modules: The additional power of ...

Bifacial solar cells have a broader application perspective due to the bifacial generation capacity and higher system efficiency and are particularly suitable for snowier ...



## Bifacial Solar Panels

Learn about bifacial solar panels and how they generate energy from both sides. Discover if they are the right choice for your solar project.

## Bifacial PV modules & systems

However, most bifacial cells end up in bifacial double-glass modules (or bifacial modules with a transparent polymer backsheet). Rating and safety standards are actively being updated to ...





## **Bifacial Solar Panels: What are They and Are They ...**

This stands in contrast to conventional solar panels which have opaque backsheets. These days, many bifacial panel designs incorporate ...

### **The Difference Between Bifacial Module and Double Glass Bifacial Module**

In summary, the primary difference between a bifacial module and a double glass bifacial module is the presence of glass on both sides in the latter, which provides improved ...



## **Contact Us**

---

For catalog requests, pricing, or partnerships, please visit:  
<https://www.talbert.co.za>