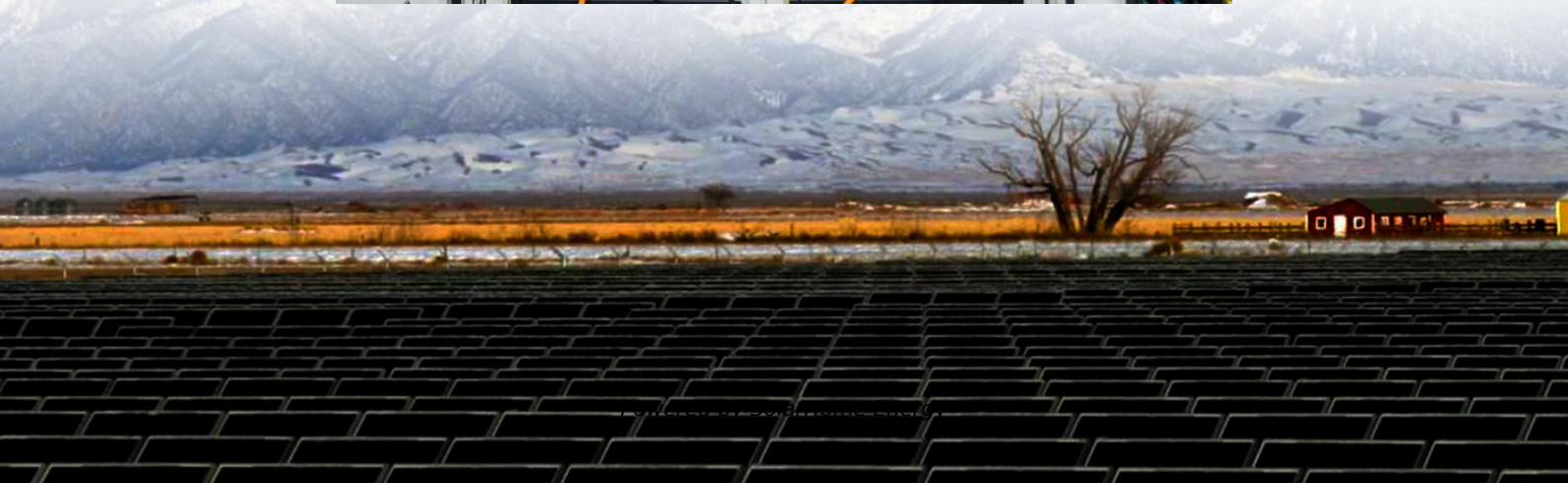
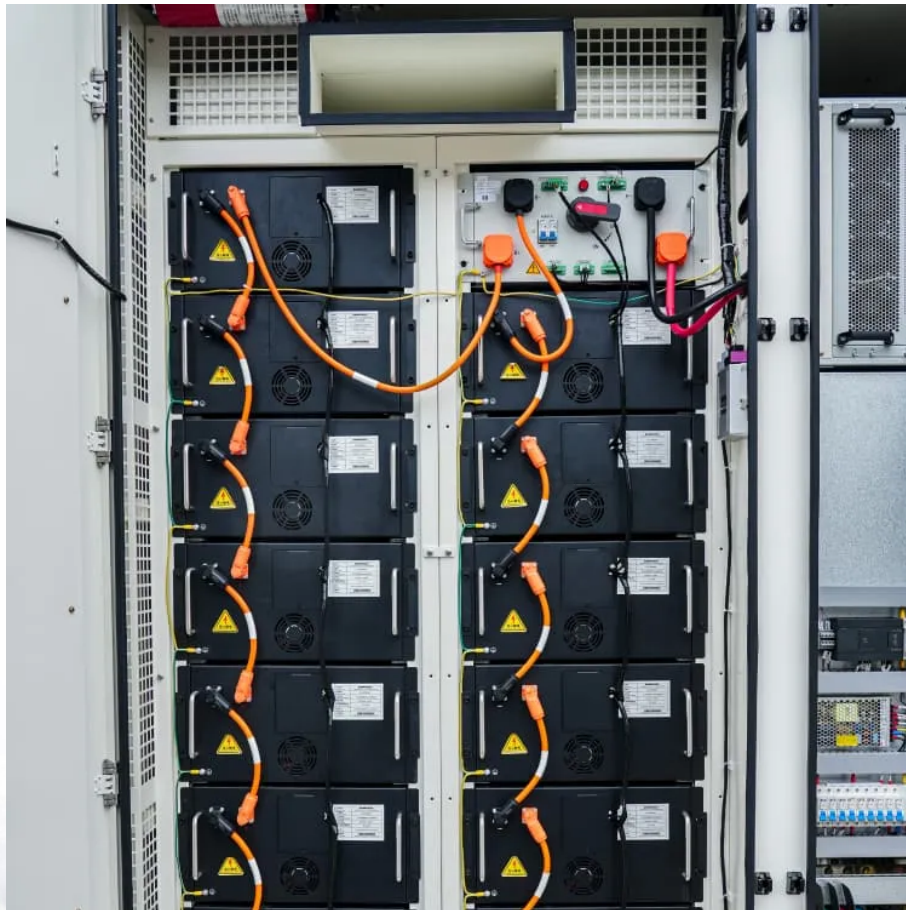


Does the outdoor power supply need to be fully discharged before charging





Overview

No, you should not fully drain a battery before recharging it. Modern rechargeable batteries, including lithium-ion and lithium-polymer types, do not require complete discharge cycles. In fact, regularly allowing your battery to fully drain can shorten its lifespan and degrade its overall performance. Should a lithium-ion battery be fully discharged before charging?

No, it is not necessary to fully discharge a lithium-ion battery before charging. In fact, modern lithium-ion batteries benefit from partial discharges and frequent recharges. Regularly discharging these batteries helps extend their life and maintain optimal performance.

Should a battery be fully discharged before recharging?

A battery has limited cycles 2000 as a guide before it starts losing capacity so yes fully use battery before recharge if you like if you have standby battery ready to go/ But fully discharging your battery also is a slight bummer to the battery too depending if has a built in battery management system so To discharge fully or not is the question.

When should a battery be charged?

For instance, instead of fully discharging a battery to 0% and then charging it to 100%, it's better to charge it when it reaches around 20-30%. This helps prevent deep discharges that can shorten battery life and reduces wear on the battery's components. A charging cycle refers to one full discharge and recharge.

Do I need to charge a lithium battery before charging?

It's fabulous to have you join us, and many thanks for your question about about lithium batteries. There is no need to fully discharge and run flat your batteries before charging. Recharge them when you need to. Typically, after a decent use of them, pop them back on charge, and they'll be ready for the next time you need them.



What happens if a battery is not fully discharged?

Complete discharges can be detrimental to lithium-ion batteries. The Battery Management System (BMS) in devices prevents batteries from being discharged below a certain threshold to avoid damage. For example, when your phone shuts off at 0%, the battery is not fully discharged.

Does a cordless drill need to be fully discharged?

But fully discharging your battery also is a slight bummer to the battery too depending if has a built in battery management system so To discharge fully or not is the question. Ultimately there is no real difference. How do i use my cordless drill I use it over and over until it is dead flat then use my back up battery and go again.



Does the outdoor power supply need to be fully discharged before c

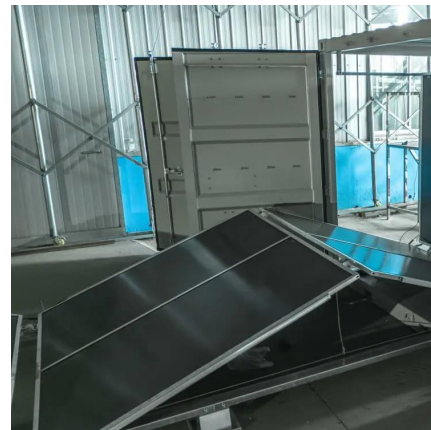


When to recharge batteries for Ryobi tools?

There is no need to fully discharge and run flat your batteries before charging. Recharge them when you need to. Typically, after a decent use of them, pop them back on charge, and they'll ...

Charging new device before first use

Calibrating the internal device battery indicator display. A full charge, and a full discharge, once-in-awhile is necessary for accuracy. Making sure it's safe. The first charge is probably the ...



batteries

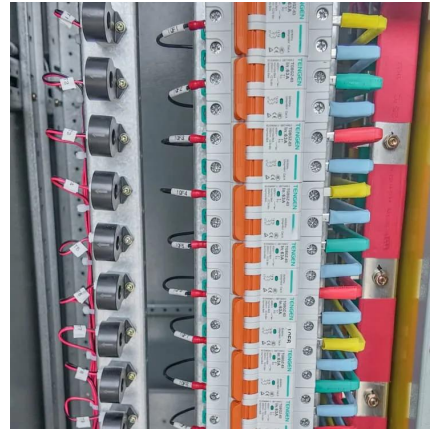
AFAIK the reason for the "wait before charging" advice is to let the cells cool back down to room temperature prior to charging (batteries heat up under significant load, or just due to the waste ...

Battery Care and Maintenance for Outdoor Equipment

3 days ago · Li-ion batteries don't have a memory effect, so they don't need to be completely



discharged to fully charge. This article focuses on Li-ion battery maintenance, use and ...

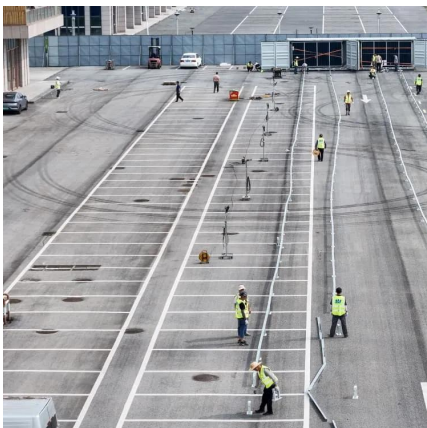


[How to Maximize the Battery Life of Your EGO ...](#)

Extend the life of your EGO Power+ batteries with expert tips on charging, storing, and usage to ensure optimal performance and longevity of ...

Debunking Lithium-Ion Battery Charging Myths: Best ...

According to Battery University, lithium-ion batteries do not require a complete charge cycle, and partial discharges with frequent recharges are preferable. ...



Charging Battery While Connected To Inverter (Explained!)

Can I charge a battery while it's connected to an inverter? in short, the answer is Yes, you can charge a battery while using an inverter. but make sure that the load should be ...



Best practices for charging / discharging batteries

Is it best to use the battery off and on until it is totally drained, before recharging fully, or just recharge to full after every use? Battery technologies have evolved a lot in the ...



Do You Need to Fully Charge a Lithium-Ion Battery? Myths and ...

The myth that you must fully discharge a lithium-ion battery before charging is not true. Lithium-ion batteries do not have a memory effect, meaning they do not require complete ...

FAQ - Amped Outdoors

A - Never store your battery fully discharged. It is best to put a 50% charge on your battery and avoid leaving for a long period of time without charging and in a cool dry place.



Lithium Ion Battery Charging: A FAQ to Answer All you need to ...

No, it isn't suggested to fully discharge the Li-ion battery before charging. If you recharge a fully discharged battery, it can lead to short circuits in the battery leading to an ...



Do I Need to Charge a Lithium-Ion Battery Before Use? Tips for ...

You do not need to charge a lithium-ion battery before first use. You can use it at any charge state. For optimal performance, keep the charge between 20-80%. A fully charged ...



Charging new device before first use

Calibrating the internal device battery indicator display. A full charge, and a full discharge, once-in-awhile is necessary for accuracy. Making sure it's safe. The first charge is ...

How long to discharge a PSU

The ZAPPED query is because of static discharge built up on you and between the component, this is not relating to the power query you first mentioned. Make sure you earth ...



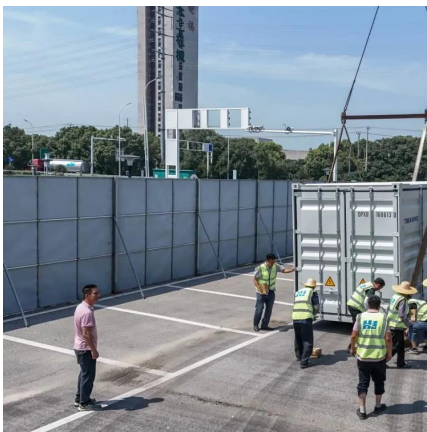


FAQ - Amped Outdoors

A - Never store your battery fully discharged. It is best to put a 50% charge on your battery and avoid leaving for a long period of time without charging and in ...

Is it Proper to Charge New Car Battery Before Use?

Even they are slightly discharged, they probably have sufficient power to start your vehicle without charging them first after the purchase. The biggest ...



[The 7 Battery Questions People Always Ask Me](#)

It seems logical to fully charge your device so it lasts longer on a single charge, but it actually does more harm than good if you make a habit out of it. Charging your device to ...

Best practices for charging / discharging batteries

Is it best to use the battery off and on until it is totally drained, before recharging fully, or just recharge to full after every use? Battery ...



Lithium Ion Battery Charging: A FAQ to Answer All ...

No, it isn't suggested to fully discharge the Li-ion battery before charging. If you recharge a fully discharged battery, it can lead to short circuits ...



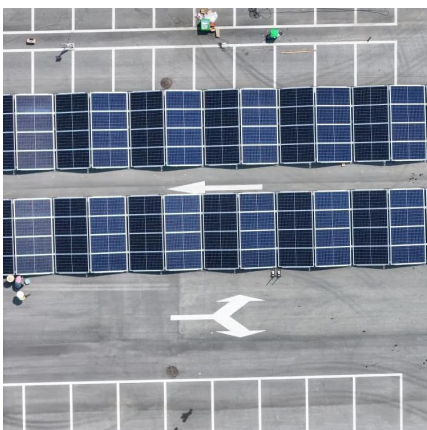
Should I Discharge NiMH Batteries Before Charging?

The question of whether to discharge NiMH batteries before charging hinges on the concept of "memory effect," a phenomenon where nickel-based batteries appear to lose capacity if they ...



[How To Properly Charge A Deep Cycle Battery](#)

"Using incorrect charger or charging method may shorten the lifespan of your batteries." Do NOT get a charger that is suitable for a car battery, you need ...





[LiFePO4 Battery Charging Guide For Beginner](#)

Carefully read the LiFePO4 battery charging guide before using or installing the battery, will help you improve the battery life and ensure safety.



Should You Fully Drain a Battery Before Recharging?

No, you should not fully drain a battery before recharging it. Modern rechargeable batteries, including lithium-ion and lithium-polymer types, do not require complete discharge ...

Is it true that you should let the battery of a device fully drain

A low voltage fuse is kind of impossible - you don't have the energy to break the connection. You could do a "circuit breaker" with a transistor, which would do what you say, but that wastes ...



Do I have to occasionally use and recharge a power station if I'm

Do I have to occasionally use and recharge a power station if I'm keeping it in storage? The manual only says to recharge it before it reaches 20% before storing. I can I keep it stored at ...



Debunking Lithium-Ion Battery Charging Myths: Best Practices for

According to Battery University, lithium-ion batteries do not require a complete charge cycle, and partial discharges with frequent recharges are preferable. Full eruptions should be avoided ...



Do I Need to Fully Charge a Lithium Ion Battery ...

However, after the initial charge, you don't need to worry about fully charging the battery each time you use it. In fact, partial charging is actually ...

Contact Us

For catalog requests, pricing, or partnerships, please visit:
<https://www.talbert.co.za>