

Does the inverter have low voltage protection





Overview

Many inverters have built-in low voltage protection that triggers shutdowns when the supply voltage drops below a preset threshold. Does a hybrid inverter/charger have low voltage protection?

Both our standard inverter and hybrid inverter/chargers have low voltage protections. In a hybrid inverter, you may get warning about "battery low voltage" or "battery over-discharge", and in a standard system your charge controller and inverter may show a fault or shut off due to low battery voltage.

Do inverters need protection?

Without proper protection, an inverter can be damaged by power surges, voltage spikes, and other electrical disturbances. There are several types of protection that can be used to protect inverters: Surge protection: This type of protection is designed to protect the inverter from power surges and voltage spikes.

What are the different types of inverter protection?

Surge protection: This type of protection is designed to protect the inverter from power surges and voltage spikes. Overload protection: This type of protection is designed to protect the inverter from being overloaded. Under-voltage protection: This type of protection is designed to protect the inverter from low voltage.

How to protect a solar inverter?

A solar inverter must include over-voltage protection, under-voltage protection, short-circuit protection, overload protection, and temperature protection to ensure safe and reliable operation. Q2: How Do I Protect My Inverter?

.



What is undervoltage protection?

Undervoltage protection ensures that the inverter operates within safe voltage limits, thereby avoiding potential issues caused by low voltage conditions. Low voltage can be as damaging as high voltage, leading to improper functioning and reduced efficiency of the inverter and connected devices.

Why do solar inverters need overvoltage protection?

By protecting the internal circuitry of the inverter from high voltage spikes, overvoltage protection ensures the longevity and reliable operation of the inverter. This not only extends the life of the inverter but also maintains the efficiency and safety of the entire solar power system.



Does the inverter have low voltage protection

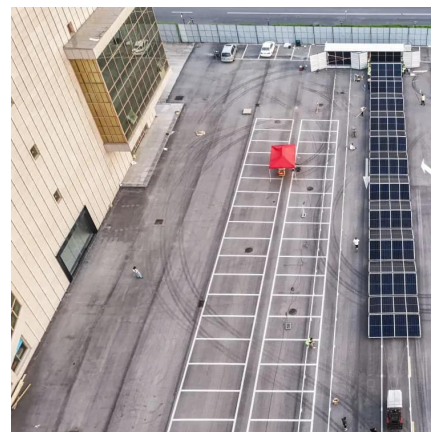


Inverter Protection: Why It's Important and How to Ensure Yours ...

Under-voltage protection: This type of protection is designed to protect the inverter from low voltage. Over-voltage protection: This type of protection is designed to protect the ...

What are the required protection for a hybrid inverter?

Undervoltage protection ensures that the inverter operates within safe voltage limits, thereby avoiding potential issues caused by low voltage conditions. Low voltage can be ...



How to Address Inverter Low Voltage Issues for ...

Adjust Low Voltage Protection Settings Many inverters have built-in low voltage protection that triggers shutdowns when the supply voltage drops ...

What Does An Inverter Do? Complete Guide To Power Conversion

Learn what inverters do, how they convert DC to



AC power, types available, and applications. Complete guide with sizing tips, safety advice, and expert insights.

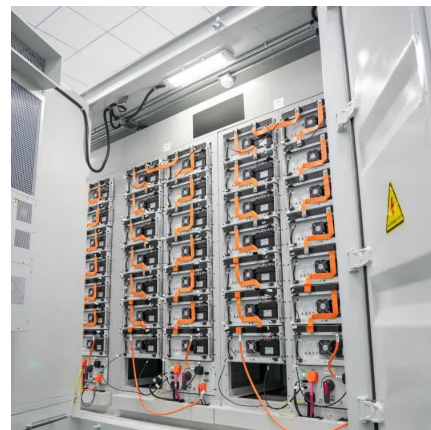


cheap inverter that has low voltage cutoff but voltage ...

The inverter I have has a low voltage cutoff of 11.5 I believe. I am saving up for a good inverter that hopefully I can set the low voltage.

WZRELB Reliable Inverters Low Voltage Cutoff Mod How To

If you have one of these off grid inverters and the low voltage cutoff activates out of spec or you just want to adjust the low voltage cutoff lower or higher you can do this mod. You ...



What are the required protection for a hybrid inverter?

Undervoltage protection ensures that the inverter operates within safe voltage limits, thereby avoiding potential issues caused by low voltage ...



Low voltage disconnect questions

The ATS has the inverter power running into it, the grid power going into it and also the battery power going into it. A low voltage disconnect can be set, so when the battery ...



Can Low Voltage Damage Air Conditioner? Power Surge Tips

Which Air Conditioner Can Withstand Low Voltage? No air conditioners can work perfectly in low-voltage situations. However, air conditioners with variable-speed compressors ...

Why is my inverter shutting off due to "battery low voltage"?

Both our standard inverter and hybrid inverter/chargers have low voltage protections. In a hybrid inverter, you may get warning about "battery low voltage" or "battery ...



15 important functions of solar inverter protection - TYCORUN

This article will introduce you to some common functions of solar inverter protection, including input overvoltage/overcurrent, input reverse polarity, output ...



How does an Inverter Off Grid 8kw protect against under

And trust me, under - voltage can cause some serious problems for your electrical equipment. It can lead to reduced efficiency, overheating, and even permanent damage. So, how does an ...

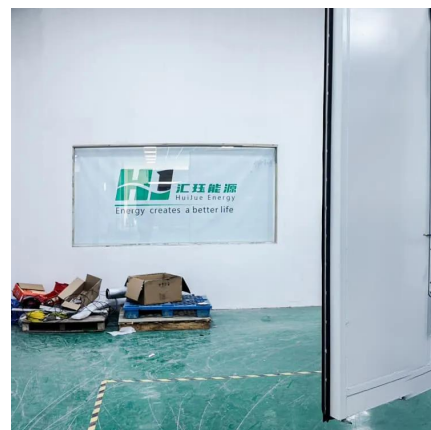


Do Inverters Turn Off When Voltage is too low?

Most inverters have a low voltage cut off, i.e., if batteries drop below X, inverter shuts down. Most inverters will not operate if they can't provide rated current, voltage and ...

How to Choose the Right Low Voltage Battery Cutoff (LVC)

How does the low-voltage battery cutoff work in the Su-vastika Inverter/UPS/Solar Inverters/PCU
The higher the settings for reserve mode, the life of the battery will increase.



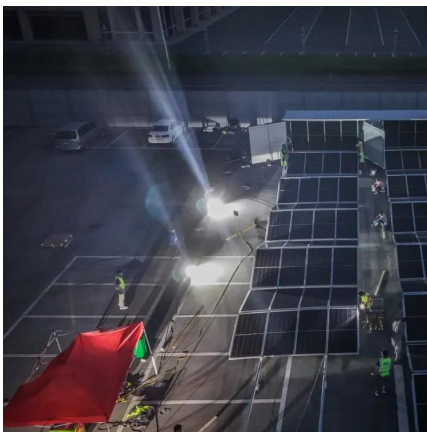


Inverter Protection: Why It's Important and How to ...

Under-voltage protection: This type of protection is designed to protect the inverter from low voltage. Over-voltage protection: This type of ...

What are the Low Voltage and High Voltage Protection of Inverters?

Therefore, the inverter sets a low voltage protection to avoid the above situation of the battery and extend the battery life as much as possible.

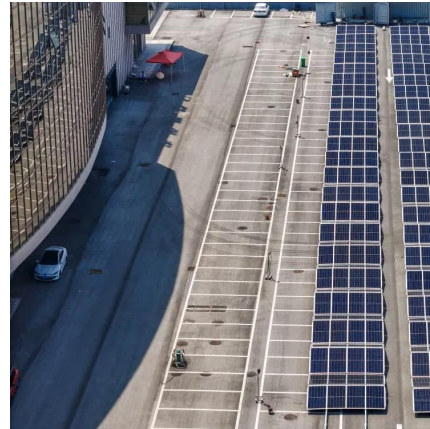


Do You Need a Voltage Stabilizer for Air Conditioner?

A voltage stabilizer is essential for AC inverters in areas with frequent voltage fluctuations, as it protects the unit from damage and ...

Prevent Inverters Malfunctions , Tips & Common Issues

What is an inverter, and what does it do? What are the different types of inverters available? What are some common signs of inverter malfunctions? How can I ...



High-voltage VS Low-voltage Inverters: What's the difference?

Low-voltage inverters work with DC voltages ranging from 12V to 48V. These are often found in small systems like RVs, boats, cabins, and backup power for small homes. They ...

15 important functions of solar inverter protection - ...

This article will introduce you to some common functions of solar inverter protection, including input overvoltage/overcurrent, input reverse ...



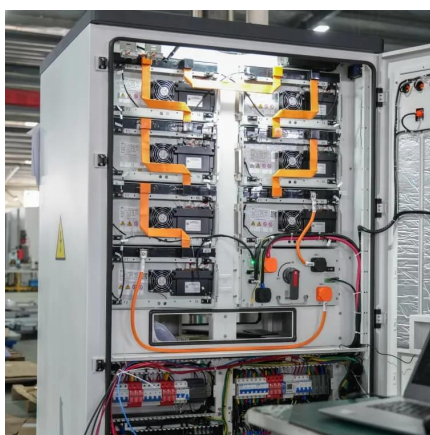
Inverter low voltage protection

I'm looking for an pure-sine-wave inverter that has a low voltage protection that matches LiFePo4 or does not have one at all or that can be disabled. I do have a a 1k ...



[12V Inverter Low Voltage Cutoff : r/diySolar](#)

That leaves the option to connect it directly to the battery, but the low voltage cutoff of the inverter is far lower than I am willing to go (somewhere around 10.5V). Is there something I could have ...



How to Address Inverter Low Voltage Issues for Reliable ...

Adjust Low Voltage Protection Settings Many inverters have built-in low voltage protection that triggers shutdowns when the supply voltage drops below a preset threshold.

Three Common Misconceptions About Grid-tied Inverters

Discover common misconceptions about grid-tied inverters in solar PV systems, including voltage output, anti-islanding protection, and DC string voltage effects.



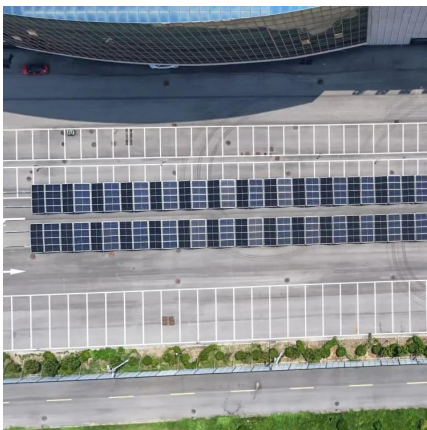
Does Inverter refrigerator need automatic voltage regulator?

I just recently bought LG inverter refrigerator. I am just wondering if I still need to purchase AVR - automatic voltage regulator during brown outs to protect my newly bought appliance? Thanks ...



Solar grid tie inverter protection function introduction

1. Input overvoltage protection: When the input voltage of the DC side is higher than the maximum allowable DC array access voltage of the grid-tied inverter, the inverter ...

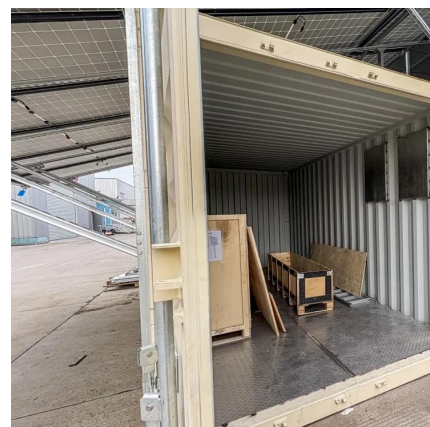


What is the low

Low - voltage protection helps to prevent these problems by shutting down the inverter when the voltage is too low. This not only protects the inverter but also reduces the ...

What are the Low Voltage and High Voltage Protection of Inverters?

Xindun puts it another way: the capacity of the battery has actually decreased, but the inverter still charges the battery according to the charging voltage of a new battery. When ...





Contact Us

For catalog requests, pricing, or partnerships, please visit:
<https://www.talbert.co.za>