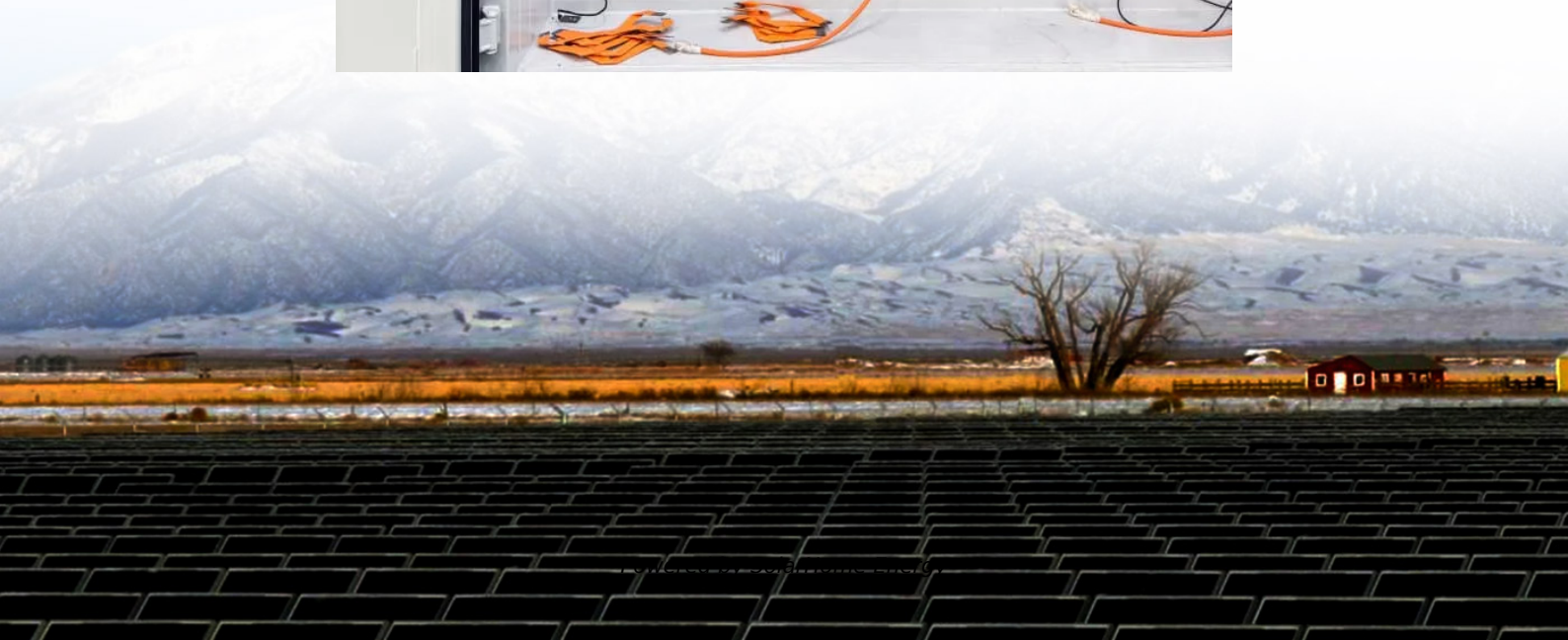


Distance between solar panels and container





Overview

How many solar panels can fit in a container?

The average panel is about 4 feet by 8 feet. So, if you use standard panels, you could fit about 25 in a 20-foot container and 50 in a 40-foot container. But there are also smaller panels available that are more efficient. These “thin film” solar panels are only about 1/8th of an inch thick and can be flexible.

How far should solar panels be from neighbors?

Neighbor Distance: National regulations do not set a uniform distance requirement for solar panels from neighboring properties; this is generally determined by local building codes. It is usually recommended to maintain at least a 3-meter distance to avoid potential shading issues and neighborhood disputes.

How far should a solar panel be from a building?

A minimum distance of 10 meters between opposing building walls and windows (according to Ministerial Decree No. 1444/1968). Any necessary pipes must be at least one meter away from the boundary. 2. France In France, the installation of solar panels is subject to national regulations and local urban planning codes (PLU – Plan Local d’Urbanisme).

Can you fit a lot of solar panels in a shipping container?

Most people don’t know that you can actually fit a lot of solar panels in a shipping container. In fact, with the right configuration, you can fit enough panels to generate up to 100 kilowatts of power. That’s a lot of energy! And it’s enough to power several homes or businesses.

How far should solar panels be from a boundary?

Distance requirements for solar panels from boundaries include: A minimum distance of 3 meters between adjacent buildings. A minimum distance of 10 meters between opposing building walls and windows (according to Ministerial



Decree No. 1444/1968). Any necessary pipes must be at least one meter away from the boundary. 2. France.

Do solar panels need to be secured to a container?

The solar panels and frame need to be safely secured to the container to withstand local environmental conditions. The weight of the panels and frame should rest on the corner castings and top side rails of the container and not on the roof panels.



Distance between solar panels and container

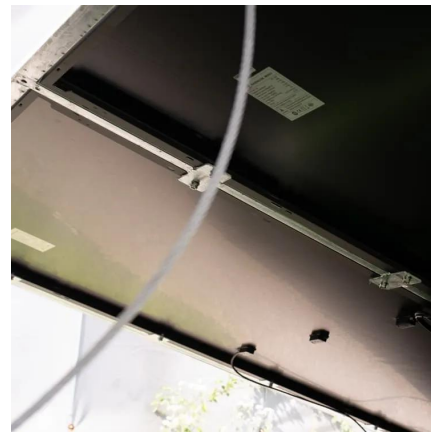


How Many Solar Panels Will Fit in a Shipping Container?

The most commonly used shipping container to ship solar panels is the 40-foot standard container. It can be loaded with about 500-600 solar panels, depending upon their ...

How Many Solar Panels Fit In a 40ft Container?

Generally, a 40ft container can hold between 500 to 600 solar panels, but this varies according to the size and weight of the panels and how they are packaged. With this ...



How to Calculate the Ideal Solar Panel Setup for a 300Ah Battery ...

Wondering how far you can put solar panels from your home? Distance matters because it affects power loss, system efficiency, and safety rules. This guide explains how to place panels ...

How many meters apart are the solar panels? , NenPower

The spacing between solar panels primarily depends on their size and design, which can



impact overall energy efficiency. 2. A general guideline serves that a gap of around ...



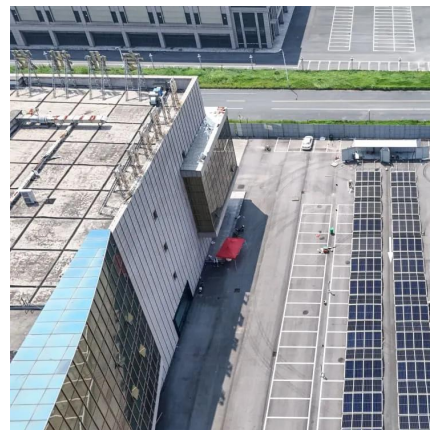
How Many Meters Should Be Between Photovoltaic Panel Rows?

While the basic formula (Row Distance = Panel Height \times Cotangent of Panel Tilt Angle) gets bandied about in engineering circles, real-world applications require 3D thinking.



How many meters apart are the solar panels?

The spacing between solar panels primarily depends on their size and design, which can impact overall energy efficiency. 2. A general guideline ...



How to Ship Solar Panels & How to Do You Transport It?

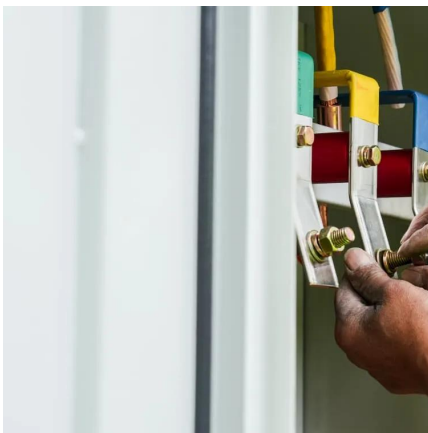
To ascertain the ideal distance for your solar panel installation, a thorough evaluation of various factors is vital. Start with a site assessment to ...





What is the appropriate distance for solar installation?

To ascertain the ideal distance for your solar panel installation, a thorough evaluation of various factors is vital. Start with a site assessment to analyze geographical ...

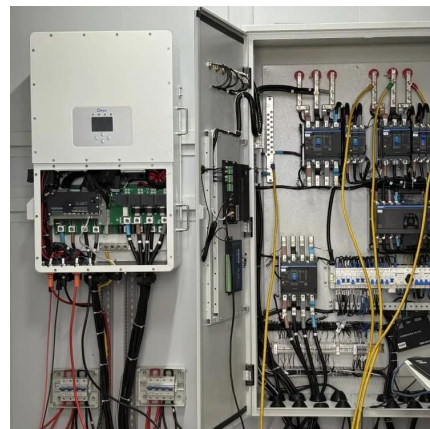


Solar Panel Distance (Battery + Charge Controller + ...)

2. How Far Can Solar Panels Be from Battery?
Generally, 20-30 feet is the ideal distance between a solar panel, such as an array, and the ...

[Panel row spacing, the space race, Greenwood](#)

As a commercial solar system is offered as a financial option to negate a certain amount of electricity drawn from the electrical grid it makes no sense to design a system that has its ...



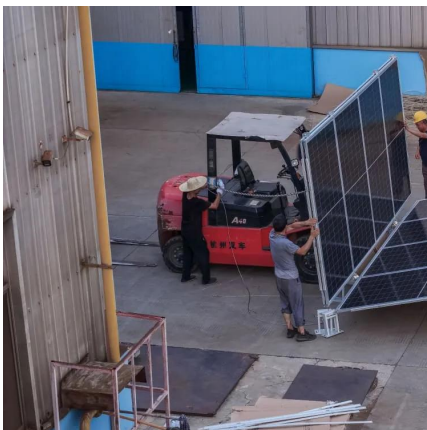
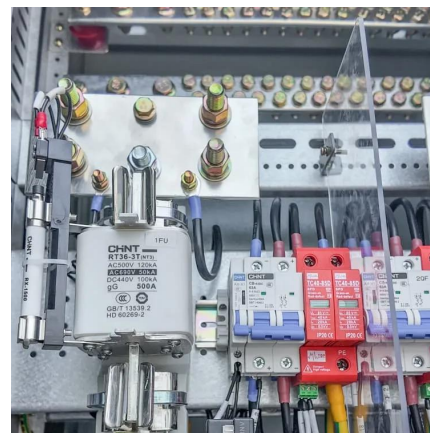
How Many Solar Panels Will Fit in a Shipping Container?

The most commonly used shipping container to ship solar panels is the 40-foot standard container. It can be loaded with about 500-600 solar ...



Solar Options

Seamless Factory Installation We partner with Stealth Power to acquire and install the solar arrays on top of the container during the build. Stealth Power's ...



How I turned a shipping container into a solar off-grid ...

To make it all work as a solar shed, I'd have to mount the various components around the container. I started with the solar panels, which would ...

[How to transport solar panels safely?](#)

Snippet paragraph: Safely transporting solar panels needs careful planning, strong packaging, and secure loading. Use foam padding, avoid ...





Spacing Between Commercial Tilt Frames -- SUNLOCK

Rows should have sufficient spacing to prevent shading and maximize solar yield. The required row spacing depends on the following (for ...

How do you space a ground-mounted array?

A standard formula is " $d = h + \tan\theta$ " where d is the minimum distance between rows, h is the height differential between the top of one row and the bottom of the row to the north, and θ is ...



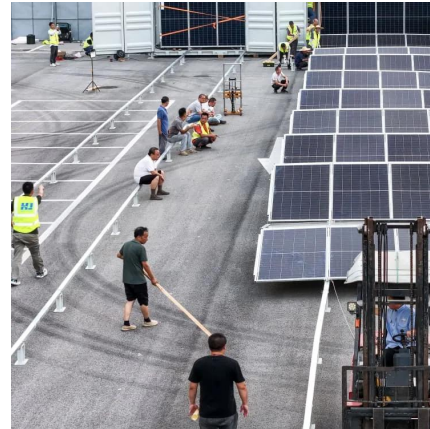
Requirements for gaps between photovoltaic panels

Talking about the gap between solar panels and the roof, the distance between the last row of solar panels and the edge of the roof should be a minimum of 12 inches. This ensures the ...



Guide to the Right Distance between Solar Panels and Battery

The distance between solar panels and battery can make or break a setup. Use these charts to properly configure your solar panel system.



Installing Solar Panels on Shipping Containers: How-To & Tips

Thinking of adding solar panels to your shipping container? Learn key considerations, how many panels fit on 20ft and 40ft containers, plus tips and real-world ...



How to Mount Solar Panels on a Shipping Container?

Mounting solar panels on a shipping container can be a practical solution for mobile or remote power needs. Below are the general steps and considerations for mounting ...



How to Ship Solar Panels & How to Do You Transport It?

Assuming you are talking about a 20-foot container, the average solar panel is around 65 inches wide. This means you would need approximately 13 solar panels to cover ...





Solar Panels And Battery Distance: Key Factors For Optimal ...

The optimal distance between solar panels and batteries refers to the ideal length of electrical wiring that connects solar energy systems to energy storage. This distance impacts ...



New Technology Container Foldable Photovoltaic Panels

The containerized mobile foldable solar panel is an innovative solar power generation device that combines the portability of containers with the renewable energy ...

[Calculate row spacing in solar panels](#)

How do we calculate the distance between solar panels ? We have to prepare for the worst case scenario, this is the day of the year when the sun rises lowest ...



Solar Support for 10ft shipping container, single direction

Description Support structure for for installation on 10 ft CONEX shipping container. All modules face same direction. This system can accept six-eight solar modules, of either 60 or 72 cell ...



How to Mount Solar Panels on a Shipping Container?

Mounting solar panels on a shipping container can be a practical solution for mobile or remote power needs. Below are the general steps and ...



How to transport solar panels safely?

Snippet paragraph: Safely transporting solar panels needs careful planning, strong packaging, and secure loading. Use foam padding, avoid heavy stacking, and tie panels with ...

How to Calculate the Minimum Distance Between PV Panels?

Understand the importance of minimum installation distance for solar panels, calculation methods, and relevant regulations to ensure efficient operation and compliance of solar energy systems.





Contact Us

For catalog requests, pricing, or partnerships, please visit:
<https://www.talbert.co.za>