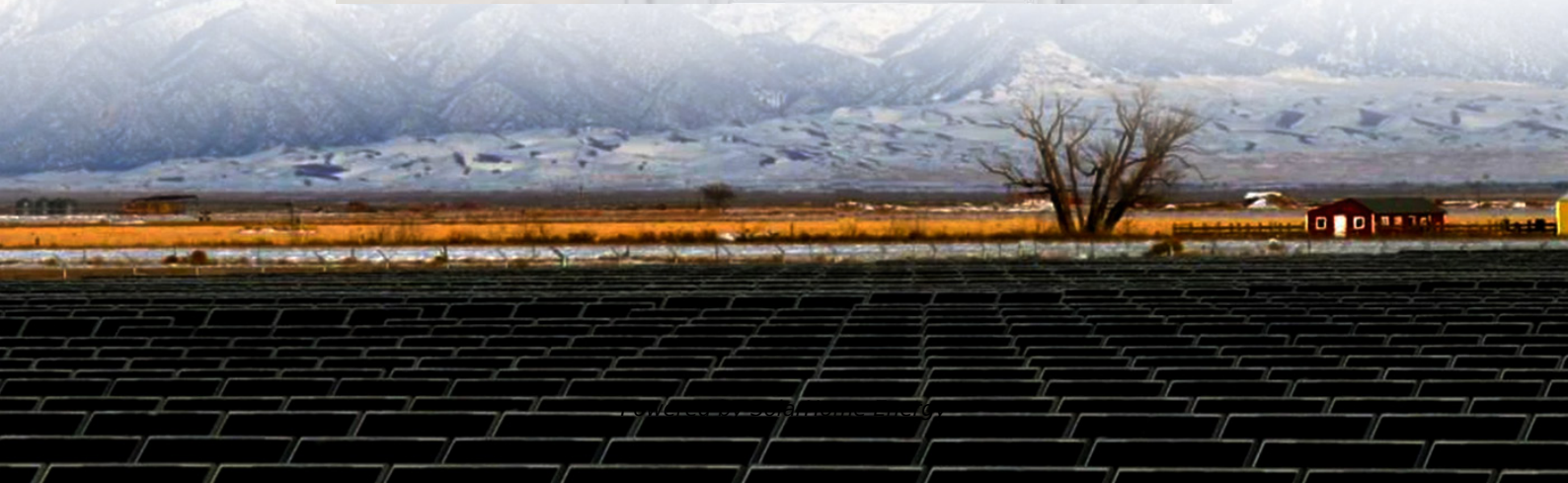


Development of EMS construction for communication base stations





Overview

What is an in-building emergency responder Communications Enhancement System (Erces)?

An In-Building Emergency Responder Communications Enhancement System (ERCES) is a wireless communications system used by first responder and emergency services personnel, such as police, fire, emergency medical, homeland security, and disaster response agencies.

Why do emergency responders need in-building wireless communications?

The need for in-building wireless communications for Emergency Responders resulted in the development of national model codes by the National Fire Protection Association (NFPA) and the International Code Council (ICC) as early as 2009.

Why do emergency responders need in-building Erces?

When emergency responders enter a building their ability to maintain interoperable and continuous communications is paramount to the protection of both public safety and the public's safety. An In-Building ERCES ensures that communication signals can penetrate into all areas of buildings in accordance with model fire codes and standards.

How many base stations are needed?

We employ a simulated annealing algorithm to determine the number of new base stations needed. After rigorous analysis, our optimal solution suggests deploying 131 micro and 19 macro base stations, with a total cost of 321. References is not available for this document.

How can emergency services be increased?

Although the capacity of emergency services can be raised by building more and expanding the current hospitals, adding prehospital emergency spots, or facilitating the nurturing of emergency medical personnel, the high costs



incurred and the long cycle cannot fulfill the growing demand for better capacity of emergency medicine in the short-term.

What is a mmWave base station?

This new form of base station architecture is engineered on the concept of Massive MIMO (multiple input, multiple output) and beamforming, which enable mmWave transmission and, as such, enable the evolution of commercial 5G and beyond.



Development of EMS construction for communication base stations

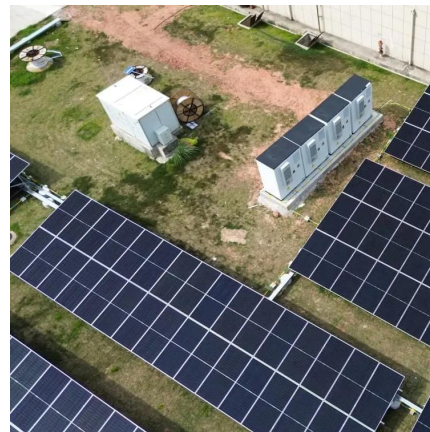


China to construct over 4.5 million 5G base stations in ...

China plans to construct over 4.5 million 5G base stations in 2025 while introducing additional policy and financial incentives to support ...

ASSESSMENT OF SPATIAL DISTRIBUTION OF ...

mounted on a substantial pole or tower, an existing building rooftop or street furniture such as street lamps, so without the base station mobile phone will not work. GSM base stations and cellular ...



The New Station Model With a Message

The township of Mount Laurel already had an urgent need for a new EMS ...

Base Stations

Construction of Base Station Why are Base Stations so Important? Base stations are important in the cellular communication as it

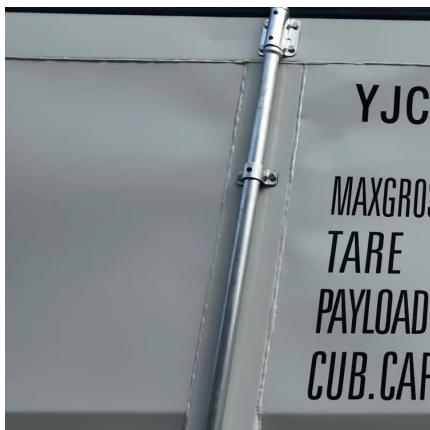


facilitate ...



The New York City Fire Department ("FDNY" Administrative ...

PROPOSED DEVELOPMENT t 12, which is immediately west of the 601 West 29th Street development that is currently under construction. The proposed EMS station will serve ...



Movable Base Stations in Mobile Networks for Emergency ...

In this work, we present a quantitative network performance comparison between a fixed base station and a movable base station, when a group of first responders is moving in a ...



Strategic Planning for Setting up Base Stations in ...

Emergency Medical Systems (EMSs) are an important component of public health-care services. Improving in-frastructure for EMS and specifically the construction of base stations at the ...





Emergency Care, Fourteenth Edition, Chapter 17, ...

In some EMS systems, simple standard communications are transmitted by pushing a button on a mobile data terminal (MDT) mounted in the ambulance. Carry portable radio whenever you ...



EMSCOM

The purpose of the EMS Bureau Communications Coordinator is to oversee the Emergency Medical Services Communications (EMSCOM) System, a subset of the overall statewide radio ...

Architecture and function analysis of integrated energy ...

Integrated energy service stations (IESSs), which comprise substations, multi-energy conversion stations, data centres, communication base stations, and other functional units, constitute the ...



Communication engineering base station construction

The construction of communication engineering base stations is an important way to ensure the development of the mobile communication industry and promote the construction of wireless ...



Designing Fire And EMS Stations: A Comprehensive Guide

This course was adapted from the U.S. Fire Administration, "Safety and Health Considerations for the Design of Fire and Emergency Medical Services Stations" which is in the public domain.



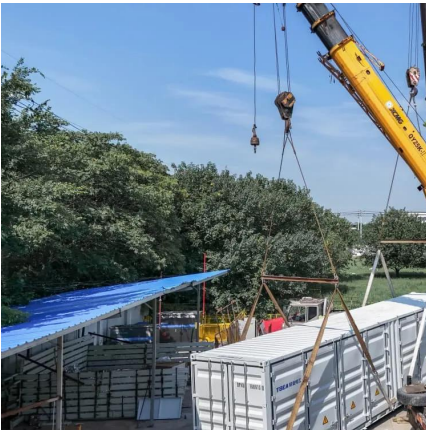
Public Safety Primer

These frequencies are allocated by the Federal Communications Commission (FCC) for communication between fixed base stations and land mobile vehicle ...

Fire Station Trends and Innovations Proposed for 2022

The 2022 conference includes updates on locating fire/EMS stations near rising sea levels or potential wildfires and how to prepare and ...





Chapter 5 EMS Communications Flashcards , Quizlet

Study with Quizlet and memorize flashcards containing terms like base station, biotelemetry, cellular telephones and more.

EMF

When base stations are located close to users, the transmitter power required by the mobile phone and the base station to communicate is relatively low. If base stations were located ...



Public Safety Primer

The need for in-building wireless communications for Emergency Responders resulted in the development of national model codes by the National Fire ...

The New Station Model With a Message

The township of Mount Laurel already had an urgent need for a new EMS station on its radar in 2018 when Catalyst Experiential approached it to discuss possible public-private development ...



5G Mobile Communication Base Station Electromagnetic ...

Abstract. The current national policies and technical requirements related to electromagnetic radiation administration of mobile communication base stations in China are ...



Strategic Planning for Setting up Base Stations in Emergency ...

Emergency Medical Systems (EMSs) are an important component of public health-care services. Improving infrastructure for EMS and specifically the construction of base ...



Research and Implementation of 5G Base Station Location ...

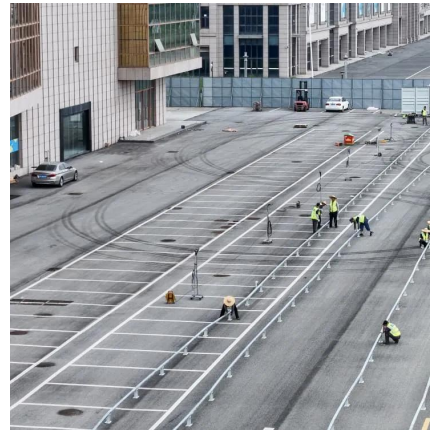
Especially with the development and promotion of national 5G technology, the construction of 5G base stations is an important part of the future communication infrastructure. Therefore, base ...





Strategic Planning for Setting up Base Stations in ...

Emergency Medical Systems (EMSs) are an important component of public health-care services. Improving infrastructure for EMS and ...

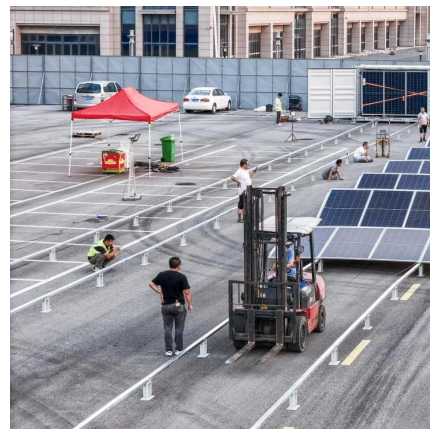


Communication Base Station Site Planning Based on Improved ...

Communication Base Station Site Planning Based on Improved Simulated Annealing Algorithm
Published in: 2023 IEEE 3rd International Conference on Electronic Technology, ...

Construction of a 5G-based, three-dimensional, and efficiently

Based on the above disaster scenarios, we used UAV to carry 5G portable base station devices and construct a temporary 5G high-altitude emergency base station. This ...



Mobile Communication Network Base Station Deployment Under ...

This paper discusses the site optimization technology of mobile communication network, especially in the aspects of enhancing coverage and optimizing base station layout. ...



Standardizing a new paradigm in base station architecture

In our latest 3GPP standardization success story, we explore how Ericsson lay the groundwork for 5G by developing a new paradigm in base station architecture.



Public Safety Primer

The need for in-building wireless communications for Emergency Responders resulted in the development of national model codes by the National Fire Protection Association (NFPA) and ...

Contact Us

For catalog requests, pricing, or partnerships, please visit:
<https://www.talbert.co.za>