

Communication base stations require power





Overview

Communication base stations are one of the core nodes of modern communication networks and require uninterrupted power supply to maintain signal coverage and data transmission. What are the components of a base station?

Power Supply: The power source provides the electrical energy to base station elements. It often features auxiliary power supply mechanisms that guarantee operation in case of lost or interrupted electricity, during blackouts. **Baseband Processor:** The baseband processor is responsible for the processing of the digital signals.

What is a communication base station?

Communication base station setups will usually include a wide array of different technologies, including power supplies, data servers, head end, radio repeaters, and communication systems that allow for high-speed continuous information flow. It can also be used as part of a leaky feeder system in the communication network.

How much power does a base station need?

There is no general maximum output power requirement for base stations. As mentioned in the discussion of base-station classes above, there is, however, a maximum power limit of 24 dBm output power for Local Area base stations and of 20 dBm for Home base stations, counting the power over all antennas.

Why are base stations important in cellular communication?

Base stations are important in the cellular communication as it facilitate seamless communication between mobile devices and the network communication. The demand for efficient data transmission are increased as we are advancing towards new technologies such as 5G and other data intensive applications.

Do I need a base station?



Yes, you do need a pair of base stations to get positional tracking of the headset, even if your just seated in front of your desk. Originally posted by SCSI-Terminator: Yes, you do need a pair of base stations to get positional tracking of the headset, even if your just seated in front of your desk.

What are the properties of a base station?

Here are some essential properties: Capacity: Capacity of a base station is its capability to handle a given number of simultaneous connections or users. Coverage Area: The coverage area is a base station is that geographical area within which mobile devices can maintain a stable connection with the base station.



Communication base stations require power



Low-Carbon Sustainable Development of 5G Base Stations in China

Goncalves et al. (2020) explored carbon neutrality evaluation of 5G base stations from the perspective of network structure and carbon sequestration. Despite the growing ...

LoRaWAN Base Station: Your Ultimate Guide to Long ...

LoRaWAN Base Stations enable long-range, low-power communication for diverse IoT applications. They offer scalability and flexibility for various ...



Communication base station

Communication base stations are one of the core nodes of modern communication networks and require uninterrupted power supply to maintain signal coverage and data transmission.

Power Supply Solutions for Wireless Base Stations Applications

Power solutions for wireless networks applications must have a wide voltage range,



high power density, compact size, excellent reliability, high efficiency, and low no-load power consumption.



[Communication base station-solar power supply ...](#)

Communication base stations located in remote areas can generally only draw electricity from rural power grids, with poor grid stability, long transmission ...

[Understanding Backup Battery Requirements for ...](#)

Telecom base stations require reliable backup power to ensure uninterrupted communication services. Selecting the right backup battery is ...



Key Factors Affecting Power Consumption in Telecom ...

Discover the key factors influencing power consumption in telecom base stations. Optimize energy efficiency and reduce operational costs with ...



Optimizing the power supply design for

...

The design of the power supply system of modern communication base stations is an important part of ensuring the normal operation of the base ...



Cooling for Mobile Base Stations and Cell Towers

Application Overview Bulky compressor-based air conditioners have traditionally been used for removing heat generated by communications equipment installed in base station and cell ...

2022 NFPA 72 Code.ai

24.10.2.2: The communications system shall be capable of monitoring additional power supplies for communications equipment vital to the transmission of off-premises signals. 24.10.3*: The ...



Do You Need A Base Station For Two-Way Radio ...

A base station, also known as a repeater, is a device used for communicating with or without hand-held radios, but most often with. A base ...



What is Telecommunication Base Station , China Hop

What is telecommunication base station, let's learn about communication base stations. China telecom equipment supplier.



Communication Base Station Emergency Power , Huijue Group ...

Cellular networks collapse precisely when survivors need them most. Communication base station emergency power systems become the last line of defense--but are they truly battle-ready? ...



The business model of 5G base station energy storage ...

1 Introduction 5G communication base stations have high requirements on the reliability of power supply of the distribution network. During planning and construction, 5G base stations are ...



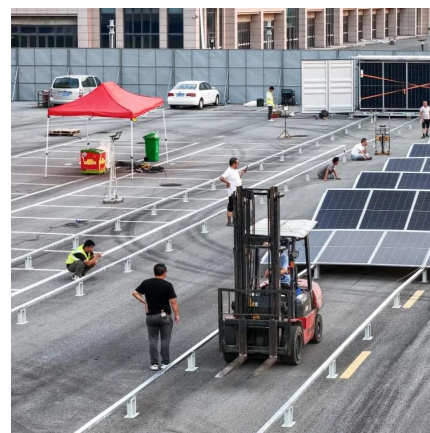


Optimizing the power supply design for communication base stations

Communication base station power system design scheme When selecting a power system design scheme, it is necessary to consider a variety of factors such as the ...

Requirements for UPS Power Supply in Communication Base ...

The UPS power supply for base stations is an essential component of the entire communication power system. It is widely used in the communication industry due to its high ...



Understanding Backup Battery Requirements for Telecom Base Stations

Telecom base stations require reliable backup power to ensure uninterrupted communication services. Selecting the right backup battery is crucial for network stability and ...

Requirements for UPS Power Supply in Communication Base Stations

The UPS power supply for base stations is an essential component of the entire communication power system. It is widely used in the communication industry due to its high ...



Base Stations

Power consumption: Thus, permanent power supply is needed for the operation of base stations; energy consumption required to operate these ...



Communication Base Station Energy Solutions

Many remote areas lack access to traditional power grids, yet base stations require 24/7 uninterrupted power supply to maintain stable communication services.



Communication Base Station Power Backup Units , Huijue ...

The Silent Guardians of Connectivity When typhoons knock out power grids or extreme temperatures strain energy systems, communication base station power backup units become ...





Base Stations

Power consumption: Thus, permanent power supply is needed for the operation of base stations; energy consumption required to operate these facilities contributes significantly

...



Communication base station

Communication base stations are one of the core nodes of modern communication networks and require uninterrupted power supply to maintain

...

Communication power supply design based on PFC and LLC

In order to meet the high power and high stability requirements of communication base stations for power supply, this paper designs a dedicated 500W switch power supply for ...



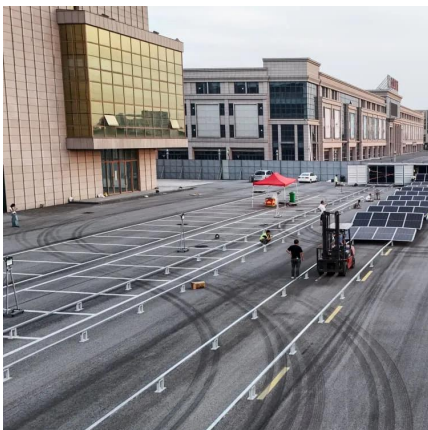
Communication base station-solar power supply solution system

Communication base stations located in remote areas can generally only draw electricity from rural power grids, with poor grid stability, long transmission lines, poor reliability of power ...



Communication Base Station Energy Solutions

Many remote areas lack access to traditional power grids, yet base stations require 24/7 uninterrupted power supply to maintain stable communication ...



Key Factors Affecting Power Consumption in Telecom Base Stations

Discover the key factors influencing power consumption in telecom base stations. Optimize energy efficiency and reduce operational costs with our expert insights.

Optimizing the power supply design for communication base stations

The design of the power supply system of modern communication base stations is an important part of ensuring the normal operation of the base station, and must be able to ...





Recommended 5 GMRS Base Stations

Choose the best GMRS base station for your communication needs using my comprehensive guide with top recommendations and ...

Communication Base Station Backup Power LiFePO4 ...

Why LiFePO4 battery as a backup power supply for the communications industry? 1.The new requirements in the field of ...



What Powers Telecom Base Stations During Outages?

Telecom batteries for base stations are backup power systems using valve-regulated lead-acid (VRLA) or lithium-ion batteries. They ensure uninterrupted connectivity ...

Contact Us

For catalog requests, pricing, or partnerships, please visit:
<https://www.talbert.co.za>